

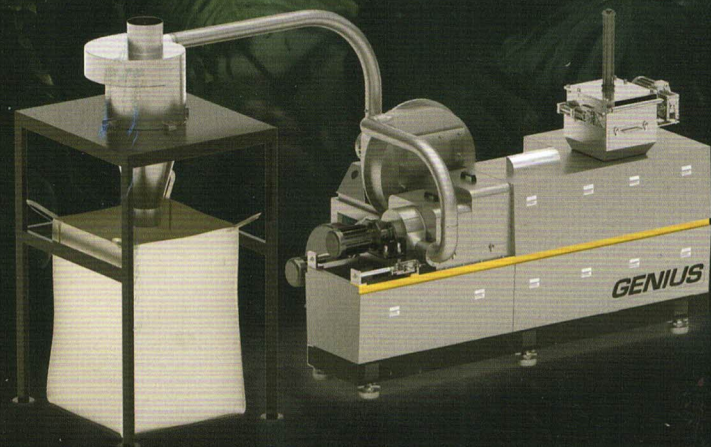
智慧回收
聰明選擇
YOUR

SMART

RECYCLING SPECIALISTS



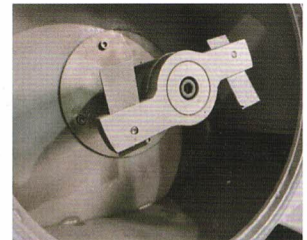
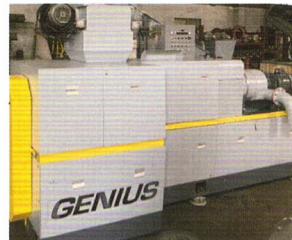
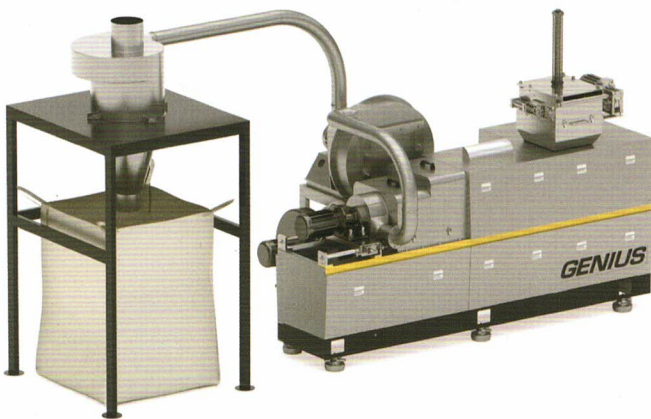
KRS Air Cooling
Recycling Machine



KRS Air Cooling Recycling Machine

In the process of manufacturing plastic film, recycling is a vital step. Those who recycle their materials in-house could save production costs. The KRS Air Cooling Recycling Machine is specifically designed to perform edge-trimmed recycling from PE bag production. It's also helpful

in recycling cutting-edge scraps & punching scraps generated during production. Furthermore, it can also recycle light printed plastic films into homogenous, high quality pellets. In most cases, 100% of the recycled pellets produced by KRS can be reused in the production process.



SUPERIOR FEATURES

Recycles Efficiently

The KRS air cooling recycling machine doesn't require pre-crushed materials to be supplied to the extruder and can handle many plastic film rollers at once. It has a recycling capacity of 40 to 50 kg per hour, resulting in a daily output range of 900 to 1100 kg.

Moisture-free

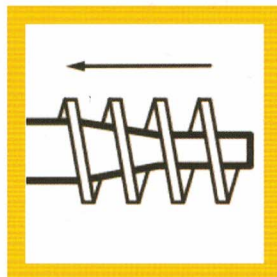
Additionally, this doesn't require water to cool the cut pellets during the recycling process anymore as it is already equipped with a compact spiral air cooling device with 6-7 meters flat tunnel for excellent cooling effect and pellet separation. Therefore, the end-pellets are moisture-free.

Complete & compact

This machine is especially beneficial to those who have limited spaces due to its compact design. The dimension (length x width x height) is 3.2 M X 1.5M X 2.0M. It is space-saving.



Nip Roller Feeding



Extrusion



Pelletizing



Blower

