



Transform and  
simplify forensic  
evidence recovery

---

with **BlindSite**

Handheld & portable forensic camera introducing

# Hyperspectral Imaging



Up to  
**650x**

more sensitive than the human eye

---

Up to  
**65x**

more sensitive than multispectral imaging

---

Capture what **no one else can.**



A single solution to  
Search.  
Find.  
Capture.  
Latent evidence



Latent Fingermarks



Body Fluids



Trace DNA



Post-Blast Fingermarks



Hidden Tattoos



Works in daylight and dark conditions



Search up to 10 m and capture from 10 cm



Non-Contact-Non-Destructive  
Safe to use, no chemicals



In-built AFIS for immediate suspect identification supplied by **ROC**



No connectivity required, secure operation



Secondary scene camera and automated scene still overlay



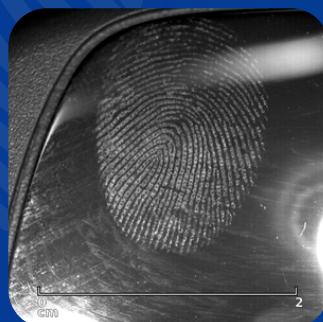
Capture at an angle or perpendicular to surface



Use on porous and non-porous surfaces  
Flat, curved, transparent and illuminated

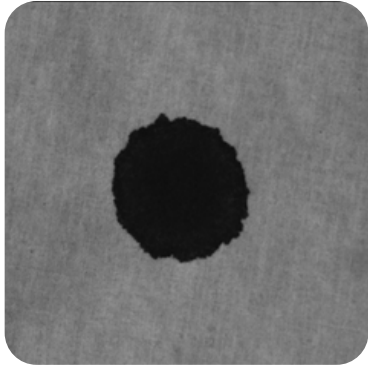


Ignores background information  
Non-contact digital scale bar

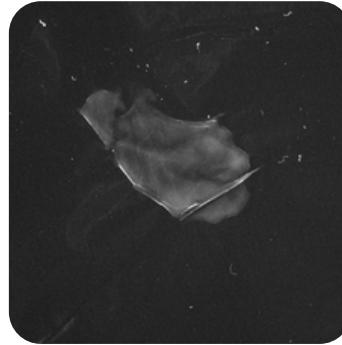


# Unique detection of absorption and fluorescence

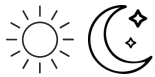
for blood and semen



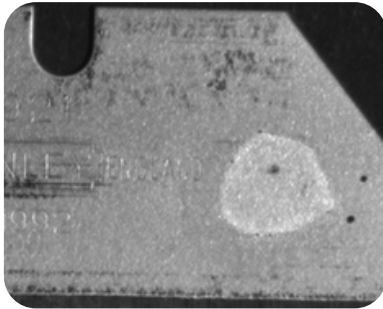
Higher probability of locating fluids at scene vs other techniques



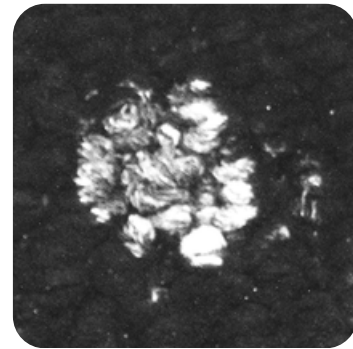
No chemicals or scene set up



Works in daylight and dark conditions



Target additional traces  
Saliva, urine, sweat, fibers, DNA, bruises, GSR, explosives, and others



## Highest success rate for fingerprint recovery from post-blast IEDs

\*65% success rate achieved from all use cases with international law enforcement and federal agencies

**Tested on various IEDs and explosives**

Pipe bombs, VB-IEDs, backpack bombs and suicide vests

Smokeless powder, C4, PETN, ammonal, dynamite



# The Tech Bits

(for the curious)



- ◆ Autofocus and Autoexposure
- ◆ 8 Aperture stops
- ◆ Compatible with Case Management System
- ◆ Image analysis tools: Histogram and gain
- ◆ Logged and recorded metadata
- ◆ Evidence saved on SD card up to 2TB
- ◆ Lightweight: Approx. 2 kg  
Dimensions: 23 x 18 x 13 cm
- ◆ Rechargeable battery: 3+ hours non-stop use

## Technology you can rely on, anytime, anywhere.

In the field or in the lab, you decide

For law enforcement, security agencies, government organizations and private investigators

From traditional crime scenes to covert ops, ISR, CT, C-IED