



**Structural Steel and  
Plate Processing Machines  
Machine Tools  
Metal Forming Machines  
Welding Automation**

## About Us

We are a machinery company that connects technology and engineering through comprehensive machinery and software solutions for metal forming and fabrication. Our innovative products and services, backed by our global dealer network, provide exceptional value that helps our customers succeed and empowers industries to contribute to a better and sustainable future.

Since 1962, the world's leading brands have trusted us for the last six decades. Today, our machines are preferred in the factories of Mitsubishi, Mercedes, Harley Davidson, Rolls Royce and NASA.

From North America to Asia, Europe to Australia, and every corner in between, our machinery solutions are powering industries in more than 120 countries worldwide. Our global reach spans every continent with an extensive product portfolio that includes metal forming, structural steel and plate processing, machine tools and welding automation solutions.

Around the world, our customers face obstacles that make their business competitive and each year we provide a wide range of solutions to meet these challenges. Doing so, some of the most challenging structures in the world have relied on AKYAPAK machines for their construction. From the Dubai Eye in Dubai to the Ataturk Airport in Istanbul, the Turkmenbashi Port Project to the Baku Olympic Stadium, our contribution to the world of engineering is a source of pride.

With four subsidiaries: Akyapak USA, Akyapak Russia, Akyapak UK and branch offices and service points in Ireland, Germany, India and Nigeria, our unparalleled proximity to you, enables us to better understand, anticipate and react with agility to support your business.

# index

- 01 **3 ADM**  
10 Axis Three Spindle Beam Drill Line
- 03 **3 ADM ECO**  
7 Axis Three Spindle Beam Drill Line
- 05 **METEOR**  
Single Spindle Beam Drill Line
- 07 **AKD**  
Angle Punching and Shearing Line
- 08 **AFD**  
Plate Drilling Machine
- 09 **AST**  
Miter Bandsaw
- 10 **APL-G**  
Gantry Drilling Oxy-Fuel / Plasma Cutting Machine
- 11 **ADOP**  
Drilling and Oxy-Fuel / Plasma Cutting Machine
- 12 **APD**  
Heavy-Duty Plate Drilling Machine
- 13 **AHS-RK**  
4-Roll Wind Tower Rolling Line
- 14 **AHS**  
4-Roll Plate Roll
- 15 **APK**  
3-Roll Angle Roll
- 17 **BMB-P**  
Dishing Press
- 18 **BMB**  
Flanging Machine
- 19 **COLUMN BOOM**  
Column-Boom Welding System
- 20 **HBW**  
H-Beam Welding Machine
- 21 **Best in Class Services**  
Service and Spare Parts

# 3 ADM

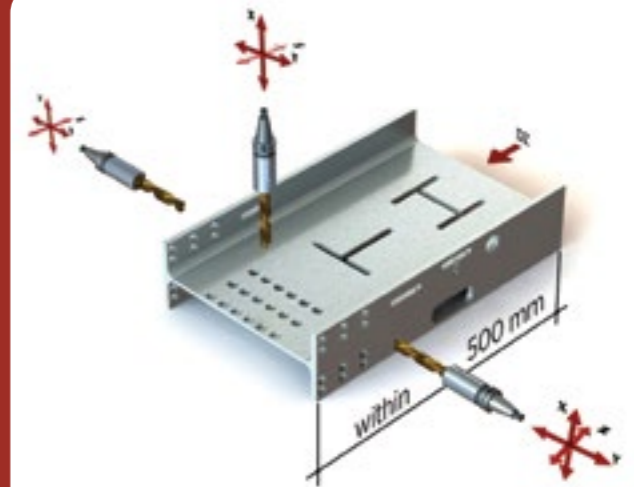
## 10 Axis Three Spindle Beam Drill Line

**The first thing that comes to mind**  
when it comes to beam drill lines

AKYPAK is a leading name in the metal forming sector because of their advanced machinery. Their reputation as a top global producer is attributed to their high-tech beam drill lines like the AKYPAK ADM series, designed for working with structural steel. The high-quality engineering solutions they provide and their priority on customer satisfaction make them the preferred choice for structural steel processing worldwide.

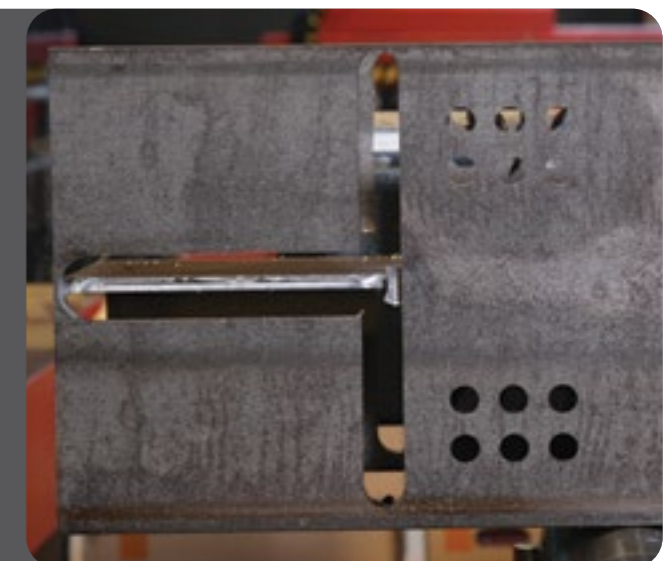


**20" (500 mm) Sub-Axis**  
for High Efficiency



**ATC - Automatic**  
Tool Changer  
**6X3**

**High Speed Carbide**  
Drilling for Beams



# 3 ADM ECO

## 7 Axis Three Spindle Beam Drill Line

### Excellent Balance of Performance

The 3 ADM ECO is an affordable drill line with 3 spindles, ideal for fabricators who are on a tight budget but still want to remain competitive. In this model, the material is moved after each horizontal drilling process (on the z-axis). The high-speed drill heads work separately on three sides of the material with great precision. This machine can multitask: While one side of the flange is being processed and the material is held steady, it can also carry out other functions like drilling, tapping and countersinking independently on the web and the opposite flange.

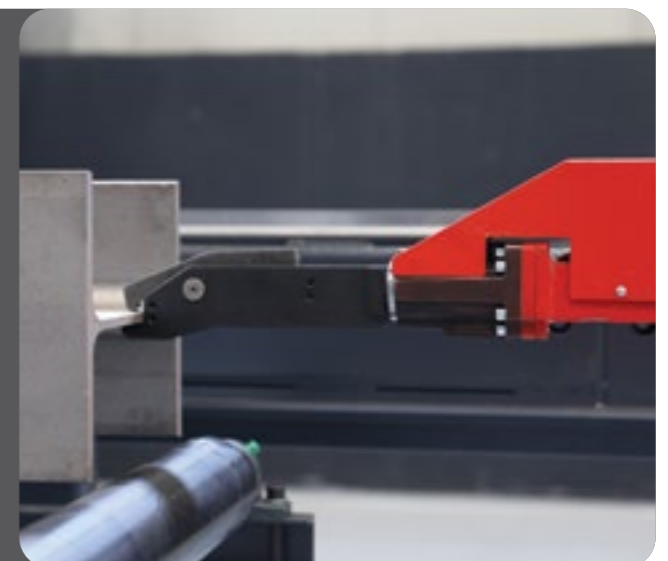


**ATC - Automatic Tool Changer**  
**4x3**



**Minimal Operator Intervention with Infeed and Out Feed Conveyors System**

**Nonstop Throughput with Feeding Arm**



# METEOR

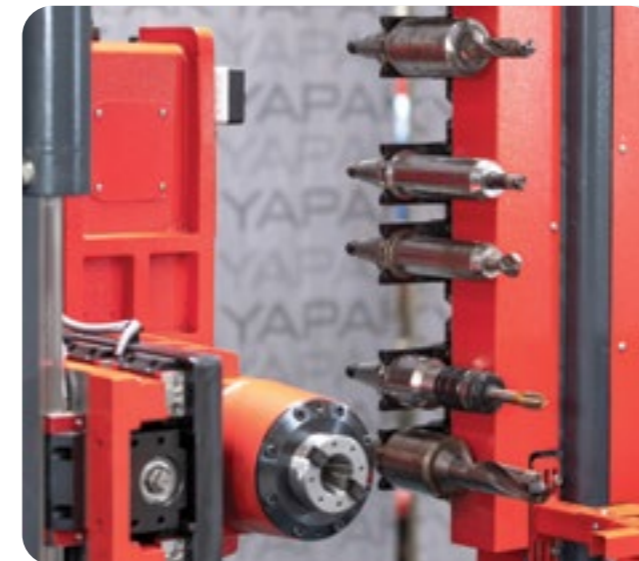
## Single Spindle Beam Drill Line

### Solutions That Make a Difference

The METEOR is designed to make drilling holes in different types of profiles quick and easy. It is an excellent choice for smaller to medium-sized fabricators due to its efficient use of space. The METEOR can process various steel profiles, such as beams, angles, flat sheets, and other compatible shapes. It also does milling work, such as making slots and pockets, with its superior control system. Moreover, the METEOR comes with a sub-axis feature that enables horizontal control of the spindle within a 10" (250 mm) range without needing to move the main body.



**10" (250 mm) Sub-Axis**  
for High Efficiency



**ATC - Automatic**  
Tool Changer  
**6X1**

**Automatic Tool and**  
Material Measurement



# AKD

## Angle Punching and Shearing Line

**Maximize Productivity with**  
Our High-Powered Angle Punching  
and Shearing Line

The AKD angle punching and shearing line is meticulously designed for accuracy and effectiveness. It can be used in the manufacturing of electric and telephone poles, towers, and even oil refineries among other steel constructions. The AKD features capabilities such as hole drilling, angle cutting, and marking. It can efficiently handle angle iron, plate, and U profiles, and delivers exceptional performance.

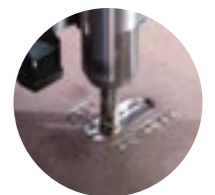


# AFD

## Plate Drilling Machine

**Maximize Output - Minimize Time Drill,**  
Mill and Mark With Precision

The AFD is a high-performance plate drilling machine designed with over 62 years of industry experience. In addition to drilling, it also performs marking, tapping, milling and deburring tasks on plates. Equipped with advanced CNC controls, the AFD is able to drill plates ranging in thickness from 6 - 80 mm. Materials are transported on unique tables equipped with balls. The sturdy hydraulic clamping jaws provide stable and precise positioning of the material using advanced CNC technology. The AFD is a top-rated product in the market that offers an excellent blend of speed, precision, and flexibility in operation. The AFD isn't just a machine; it's a comprehensive solution for reducing costs and boosting profits.



# AST

## Miter Bandsaw

### Advanced Sawing

The AKYAPAK AST Miter Bandsaws are constructed with a sturdy frame for precise automatic material cutting. With a faster cutting speed, these bandsaws can cut materials at 0° or at miters (straight or at angled miter cuts).

The AST series uses top-quality components to reduce friction and enhance performance. They can be used in conjunction with an Akyapak Beam Drilling Line or separately.



AST 1300-600

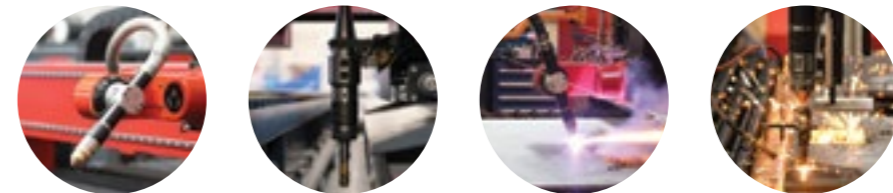


# APL-G

## Gantry Drilling Oxy-Fuel / Plasma Cutting Machine

### Transform Your Production Line with APL-G: Multi-Tasking Mastery, Minimalist Design and Maximum Efficiency

Precise, Efficient, Multifunctional / The APL-G is a gantry drilling and oxygen/plasma cutting machine transforming the heavy steel construction sector. The APL-G comes with a high-powered drilling center and a cutting unit which uses plasma and oxygen, boosting productivity and safety, and lessening the need for manual labor and waste production. This machine is not only precise, but it also minimizes waste and lessens the emission of dangerous pollutants, contributing to a healthier workspace and continuous advancement in the sector.



# ADOP

## Drilling and Oxy-Fuel / Plasma Cutting Machine

**Precise, Efficient, Revolutionary**

The ADOP Drilling and Oxy-fuel/Plasma Cutting Machine has been meticulously engineered to endure harsh shop environments and extensive work hours. This makes it reliable for metal fabricators in the industry to produce consistently accurate metal parts daily. The ADOP was also designed to be user-friendly and intuitive. The easy-to-use interface is particularly advantageous for large and small-to-medium sized manufacturers.

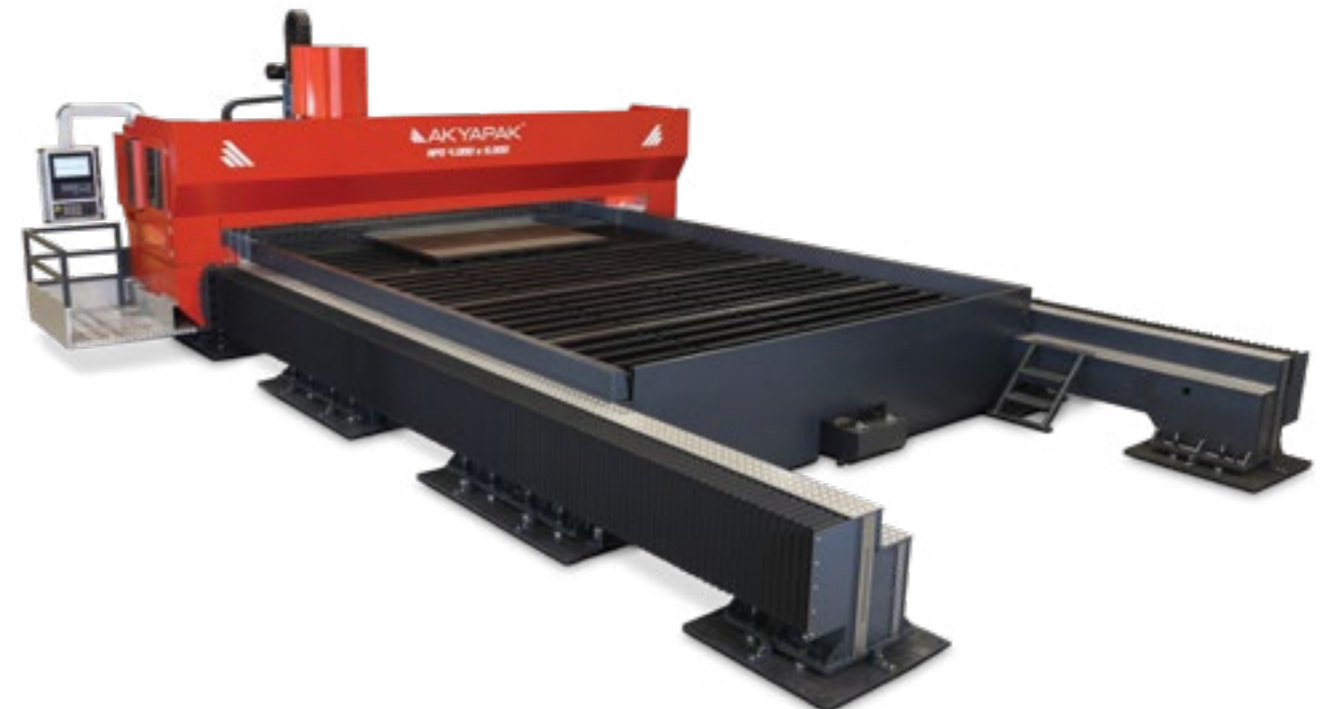


# APD

## Heavy-Duty Plate Drilling Machine

**Advanced Solution for Heavy and Difficult Parts**

APD Heavy-Duty Plate Drilling Machine is a product designed with AKYAPAK's experience of half a century. On the plates It is designed to perform Drilling, Tapping, Milling operations, using the latest technology. The main body is manufactured as welded steel construction. All parts are machined after stress relieving heat treatment.



# AHS

## Wind Tower Solutions

### We empower true sustainable manufacturing solutions

As the global capacity for harnessing electricity from wind energy continues to expand, we are poised and enthusiastic to contribute to the advancements in the wind energy sector, leveraging our extensive experience in metalworking machinery over the years.

Our state of the art machines are designed to meticulously shape wind towers, ensuring optimal aerodynamics to capture the full potential of wind energy. We stand committed to empowering the renewable energy landscape with precision and reliability, helping you harness the power of the wind seamlessly.

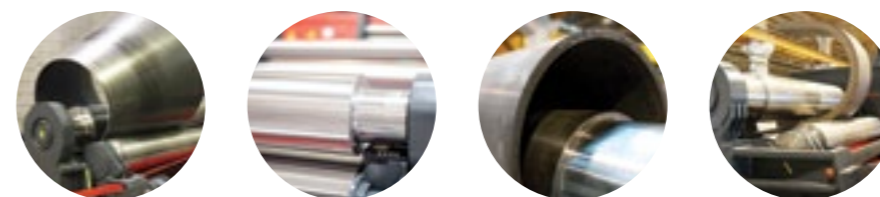


AHS 30-150

## 4-Roll Plate Roll

### Mastery In Metal, Bending as You Imagined

AHS 4-Roll Plate Roll model has a superior design with self-aligning strong shafts. Each roll of the AHS is equipped with a smart mechanism that reduces friction and serves as an excellent solution for precise and challenging rolling applications. The AHS quickly bends thick metals and is an ideal choice for metal sheet thickness of 2 mm (14ga.) to 200 mm (8") and sheet width of 500 mm (20") to 12 meters (40 ft.).



AHS 86-100

# APK

## 3-Roll Angle Roll

### A Suitable Combination of Heavy, Medium and Light Series AKYAPAK 3-Roll Angle Rolls

APK heavy-series line of profile bending machines are specifically designed to handle demanding bending applications. These machines are equipped with high quality components and a robust design that offers heavy-duty bending capacity. Innovative in design and highly reliable, these solutions meet the most complex bending needs in a reliable manner.

The APK heavy-series product line is meticulously designed to handle high capacity bending operations with unmatched proficiency. Engineered with a 3-roll drive system, these models effectively eliminate the potential for material slippage during the process, ensuring your operations run smoothly, and improving the efficiency of your project.



### A Suitable Combination of Heavy, Medium and Light Series AKYAPAK 3-Roll Angle Rolls

APK medium-series line of profile bending machines are precision engineered to tackle diverse bending applications. Tailored to handle slightly lower capacities than the larger models, these medium sized machines incorporate superior components to ensure effective operation. Crafted for medium scale operations, they boast an exceptional design that offers significant bending capacity.



APK small-series line of profile bending machines are meticulously designed to deal with light-duty bending tasks. While compact in size, these machines are embedded with quality components ensuring they operate as effectively as larger models. Designed specifically for small scale operations, these machines offer commendable bending capabilities despite their size.

# BMB-P

## Dishing Press

### Creating Precision with Every Press

The BMB-P product line is designed specifically for the purpose of dishing press. The BMB-P uses powerful hydraulic pressure technology to deliver the most effective performance. The BMB-P features a robust machine design that handles high workload capacities and delivers results for long durations.

Optimized for large mould diameters, the BMB-P product line offers robustness and flexibility required in industrial production. Designed with the most durable body structure, these presses provide long life and high performance operation with minimum flexing.

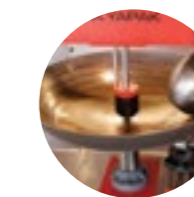
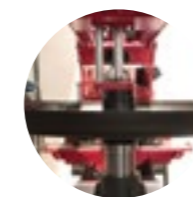


# BMB

## Flanging Machine

### Akyapak's High-Speed Flanging Machine

BMB product line is designed with high precision technology to bend or curve the edges of plates into a rim or flange. Carefully designed to provide the lowest possible vibration and exceptional speed during the plastering process, the machines ease of use makes their operation effortless even for inexperienced operators. The BMB product line is equipped with innovative features such as automated system control, adjustable working speed, and efficient hydraulic power to ensure maximum productivity and precision. The BMB product line is crafted using specialized manufacturing methods such as comprehensive body welding and stress-relieving annealing, aimed at enhancing the machines longevity and robustness.



# COLUMN-BOOM

## Advanced Welding Solutions

### Transform Challenges into Opportunities

HCB – MCB – EHCB

The AKYAPAK Column-Boom System stands at the forefront of innovative welding solutions, catering specifically to the evolving demands of large-scale and complex projects within the industry. This system offers unparalleled versatility and precision in welding, enabling circular or longitudinal welding operations, a 360-degree rotating column, mobile or stationary configurations and compatibility with other necessary positioners and rotators. Available in MCB-HCB and E-HCB models, the column-boom system facilitates intricate welding tasks, even in confined inner diameters, thus expanding the range of achievable welds. The AKYAPAK Column-Boom System represents a shift towards safer, more precise, and efficient welding practices, highlighting a commitment to innovation in the welding industry.



# HBW

## H-Beam Welding Machine

### Crafting Excellence in Every Beam

The AKYAPAK HBW H-Beam Welding Machine Where Precision Meets Durability

Akyapak H-Beam Welding Machine is designed to obtain the desired special H-Beams in high quality by welding different sized plate parts centred in the inlet conveyor groups. HBW, which includes an integrated beam straightening function, can also be equipped with double (tandem) welding torches. Capabilities The HBW has an upper pressure cylinder that applies vertical pressure directly along the web axis using an adjustable hydraulic cylinder with a maximum piston pressure of 12,908 psi (9 Tons).



## Service and Spare Parts

Akyapak offers you a modern and effective technical service operation by focusing on your needs. With our expert, experienced and dedicated team, we are always at your side with the services we offer both on-site and remotely.

### On-site Installation, Training and Consultancy

Our qualified teams of experts offer a wide range of services, from on-site installation to training and consultancy. Together with our experts, we determine the most suitable solutions for you and help you to manage your business in a seamless and trouble-free manner.

### Fast Solution and Spare Parts Stock

Thanks to our large spare parts stocks, we offer fast solutions without wasting time. We instantly supply the parts suitable for your specific needs and keep your business processes running without interruption.

### Smart Support

Thanks to our augmented reality application, we provide remote live support via smartphone, tablet or smart glasses. We instantly intervene in your problems and offer a faster support experience by visually communicating solutions.

### Contact Information

For your technical service and spare parts requests, you can contact us at [service@akyapak.com](mailto:service@akyapak.com) or **+90 0224 280 75 00**

Akyapak continues to support you to manage your business more effectively and efficiently with technological solutions and customer-oriented service approach.







[www.akyapak.com](http://www.akyapak.com)

**P.** +90 224 280 75 00

**E.** [info@akyapak.com](mailto:info@akyapak.com)