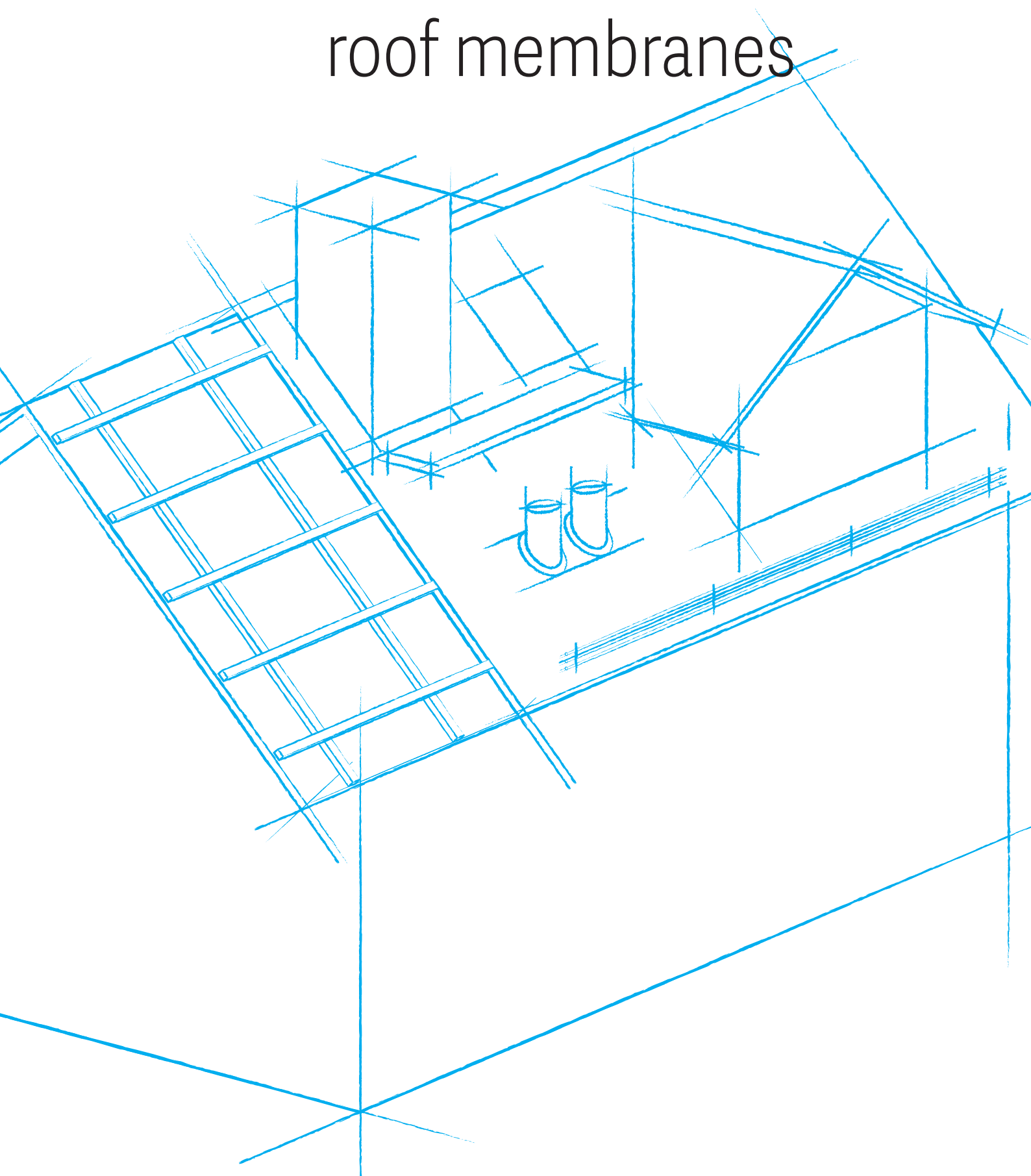




# Accessories and roof membranes



# MEMBRANES

## PAROTEC MEMBRANES

A system of highly permeable membranes for initial roofing that performs the function of effective attic hydroinsulation. The multilayer structure drains excessive water vapor from the interior of the building into the ventilation space under the roof slope, while the waterproofing prevents condensation from entering back into the building.



### alfa

density	110g/m <sup>2</sup>
dimension	1,5 × 50 = 75 m <sup>2</sup>
UV stability	90 days
WDD	3500g/m <sup>2</sup> /24h

### beta / beta++

density	130g/m <sup>2</sup>
dimension	1,5 × 50 = 75 m <sup>2</sup>
UV stability	90 days
WDD	3500g/m <sup>2</sup> /24h

### gamma / gamma++

density	160g/m <sup>2</sup>
dimension	1,5 × 50 = 75 m <sup>2</sup>
UV stability	90 days
WDD	3000g/m <sup>2</sup> /24h

### gamma strong

density	160g/m <sup>2</sup>
dimension	1,5 × 50 = 75 m <sup>2</sup>
UV stability	90 days
WDD	3000g/m <sup>2</sup> /24h

### sigma / sigma++

density	190g/m <sup>2</sup>
dimension	1,5 × 50 = 75 m <sup>2</sup>
UV stability	90 days
WDD	3000g/m <sup>2</sup> /24h

### kappa / kappa++

density	220g/m <sup>2</sup>
dimension	1,5 × 50 = 75 m <sup>2</sup>
UV stability	180 days
WDD	2800g/m <sup>2</sup> /24h

### gamma ZVDH\*

density	150g/m <sup>2</sup>
dimension	1,5 × 50 = 75 m <sup>2</sup>
UV stability	30 days
fire reaction	class E (EN ISO 11925-2)

\*ZVDH classification



## ADHESIVE SYSTEMS

Specialized tapes for bonding roofing membranes, thermal screens and films of various purposes, which seal the points of contact, but also permanently attach structural elements to the substrate.



### unoTec / unoTec fasade

material	non-woven, polypropylene
dimension	50 mm × 25 m
type of adhesive	acrylic



### duoTec

material	acrylic, polyester mesh
dimension	20 mm × 25   50 m
type of adhesive	acrylic



### izoTec

material	polyethylene, polyester mesh
dimension	50 mm × 25 m
type of adhesive	acrylic



### stelTec

material	acrylic, polyester mesh
dimension	50 mm × 50 m
type of adhesive	synthetic rubber



### puroTec

material	polyethylene foam
dimension	40   50   60 mm × 30 m
type of adhesive	acrylic



### glueTec

bonding time	1 h
capacity	500 ml
type of adhesive	pentane

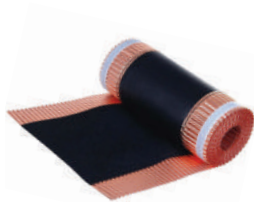


# ROOF ACCESSORIES

## ROOF RIDGE

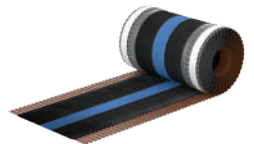
Products used for finishing the ridge, meaning the roof ridge at the highest point of the roof. The high diffusivity of the materials used in the ridge tapes ensures proper ventilation of the space between the roofing and the underside layers of the roof. On the other hand, a group of supports enables the proper installation of the ridge batten.

### Ridge Tapes



#### vRoll

material	aluminum   copper, non-woven
width	180   240   320   390 mm
length	5 m
color	7 RAL colors + copper



#### xRoll

material	aluminum, technical fabric
width	240   310 mm
length	5 m
color	7 RAL colors



#### dRoll

material	aluminum   copper
width	300 mm
length	5 m
color	7 RAL colors + copper



### Ridge batten support grips



#### type nail

material	galvanized steel
height	180   210   230   260 mm
ridge batten width	40   50 mm

#### type bracket

material	galvanized steel
height	200 mm
ridge batten width	40   50 mm



## CHIMNEY AND ROOF VALLEY

A wide range of products providing a tight and an aesthetic finish to the crucial areas of roofing within the chimney and roof valley zone. Chimney tapes are used to connect the roofing to the masonry, while roof valleys seal concave areas at the junction of the roof slopes.

### Chimney tapes



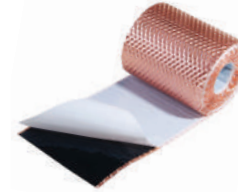
#### alu 2D | 3D

material	aluminum   copper, butyl
dimension	300 mm × 5 m
color	6 RAL colors + copper



#### EPDM

material	EPDM, aluminum mesh, butyl
dimension	300 mm × 5 m
color	4 colors

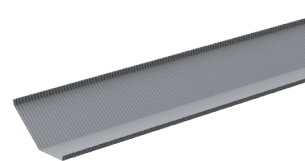


#### antimoss

material	copper, butyl
dimension	150 mm × 5 m
thickness of copper sheet	0.1 mm



### Roof valley



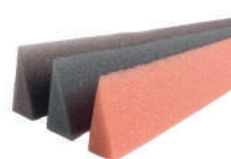
#### roof valley flashing pressed across | along

material	aluminum
dimension	1900 × 500 mm   2000 × 490 mm
color	6 colors



#### clamp for roof valley flashing pressed across | along

material	aluminum
dimension	44 mm
color	6 colors



#### roof valley sealing wedge

material	flexible polyurethane foam
dimension	27 × 60 × 1000 mm
color	brick   brown   graphite



# BUTYL PRODUCTS

## BUTYL PRODUCTS

## EAVES

A wide range of products for finishing the eaves in accordance with the roofing technique. Accessories to create and secure ventilation gaps and elements for proper drainage of water from the membrane and roof covering into the gutter.



### eaves comb

material	polypropylene
dimension	60   80   100 mm × 1000 mm
color	brick   brown   black

### eaves ventilation grid

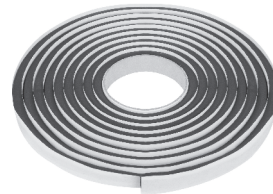
material	polypropylene
dimension	50   80   100   150 mm × 5 m
color	brick   brown   black

### eaves strip

material	aluminum
dimension	1   2 m
color	6 colors



The most popular sealing material that is characterized by high elasticity, high adhesive strength and resistance to weather conditions. It is available in several forms, including butyl tapes of varying widths applied to any carrier (aluminum, non-woven polypropylene, polyethylene film), profiled tapes or butyl cords.



### butyl cord

material	butyl
dimension	various sections and dimensions
color	black   grey



### butylTec tape

material	butyl
dimension	various types and sizes
color	black   grey



### sbButyl tape

material	butyl, non-woven
dimension	100   150 mm × 25 m
color	grey

## TILE CLIPS



### type J | PJ | R

material	galvanized steel   INOX
purpose	ceramic tile



### type U | side clip

material	galvanized steel   INOX
purpose	concrete tile



### cut tile clip

material	stainless steel
purpose	cut tile



### buTape tape

material	butyl, laminate
dimension	75   100   150   300 mm × 10 m
color	5 colors



# ROOF WALKWAYS

## TECTO LINE

TECTO roof safety walkways systems are sets of benches or steps packaged in a cardboard box. This is a particularly convenient solution, because a single kit contains all the necessary components of the set, as well as an instruction manual with detailed instructions for their installation on the roof.



### Tecto bench

material	galvanized steel
dimension	40   60   80   100 cm
color	6 colors
available coverings <sup>1</sup>	LN1; BD35020; BD35030; BD35035; RABEK



### Tecto step

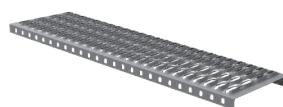
material	galvanized steel
dimension	150 × 250 mm
color	6 colors
available coverings <sup>1</sup>	LN1; BD35020; BD35035

<sup>1</sup> LN1 – hooked to the batten type;  
BD35020 – sheet metal 350/20;  
BD35030 – sheet metal 350/30;  
BD35035 – sheet metal 350/35;  
RABEK – standing seam sheet metal;



## STANDARD LINE

Single elements of roof safety walkways to be independently combined into a set, which includes: a bench that serves as a platform, a cradle used to connect the bench to the bracket, brackets in different variants and sizes adapted to selected types of roofing, and mounting screws.



### bench

material	galvanized steel
dimension	40   60   80   100   120   150   200 cm
color	10 RAL colors



### bench connector

material	galvanized steel
dimension	200 × 20 × 3 mm
color	10 RAL colors



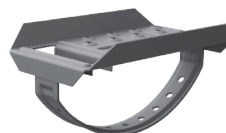
### cradle

material	galvanized steel
flat bar dimension	40 × 3 mm
color	10 RAL colors



### grip support

material	galvanized steel
color	10 RAL colors
available coverings <sup>2</sup>	DBDC; DBDC-LN1; BD33030; BD35020; BD35030; BD35035; BD40020; BD42020; BD46020; BP38035; RABEK; typ U; typ przyścienny



### step

material	galvanized steel
dimension	156 × 256 mm
color	10 RAL colors

<sup>2</sup> DBDC – tile; screw-on type;  
DBDC-LN1 – hooked to the batten type;  
BD33030 – sheet metal 330/30;  
BD35020 – sheet metal 350/20;  
BD35030 – sheet metal 350/30;  
BD35035 – sheet metal 350/35;  
BD40020 – sheet metal 400/20;  
BD42020 – sheet metal 420/20;  
BD46020 – sheet metal 460/20;  
BP38035 – panel sheet metal 380/35;  
RABEK – standing seam sheet metal;  
type U – flat sheet, trapezoidal, shingle, roofing felt;  
Wall bench support.

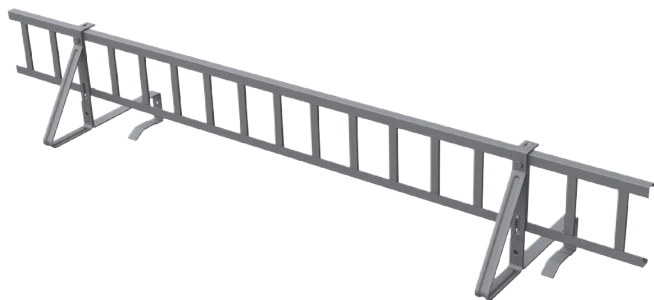




# SNOW PROTECTION

## SNOW PROTECTION FENCE SYSTEM

Horizontal roof protection consisting of a snow fence available in two heights and two or more fence grips designed for specific roofing.



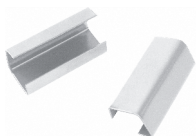
### snow fence

material	galvanized steel
length	150   200 cm
height	15   20 cm
color	10 RAL colors



### snow fence grip

material	galvanized steel
color	10 RAL colors
available coverings <sup>3</sup>	DBDC; DZLN1; KARP-U; 33030; 35020; 35030; 35035; 40020; 42020; 46020; 38035; RABEK; typ U



### snow fence connector

material	galvanized steel
color	10 RAL colors

## PIPE SYSTEM

Horizontal roof protection consisting of a snow pipe and two or more pipe holders for specific roofing. Available in three different types: single-pipe, double-pipe and triple-pipe.



### pipe

material	galvanized steel
length	150   200 cm
diameter	30 mm
color	10 RAL colors



### grip

material	galvanized steel
typ	single-pipe   double-pipe   triple-pipe
color	10 RAL colors
available coverings <sup>3</sup>	DBDC; DZLN1; KARP-U; 33030; 35020; 35030; 35035; 40020; 42020; 46020; 38035; RABEK; typ U



### connector and snow pipe cap

material	polypropylene
diameter	30 mm
color	black



### snow pipe lock

material	galvanized steel
diameter	30 mm
color	zinc

#### Color Chart — Communication and Protection

	RAL 3004 cherry
	RAL 3009 chestnut
	RAL 3011 red
	RAL 6020 green
	RAL 7016 anthracite
	RAL 7024 graphite
	RAL 8004 brick
	RAL 8017 brown
	RAL 9005 black
	RAL 9006 silver



<sup>3</sup> DBDC – tile; screw-on type;  
DZLN1 – hooked to the batten type;  
KARP-U – plain tile (karpiówka);  
33030 – sheet metal 330/30;  
35020 – sheet metal 350/20;  
35030 – sheet metal 350/30;  
35035 – sheet metal 350/35;  
40020 – sheet metal 400/20;  
42020 – sheet metal 420/20;  
46020 – sheet metal 460/20;  
38035 – panel sheet metal 380/35;  
RABEK – standing seam sheet metal;  
type U – flat sheet, trapezoidal, shingle, roofing felt;



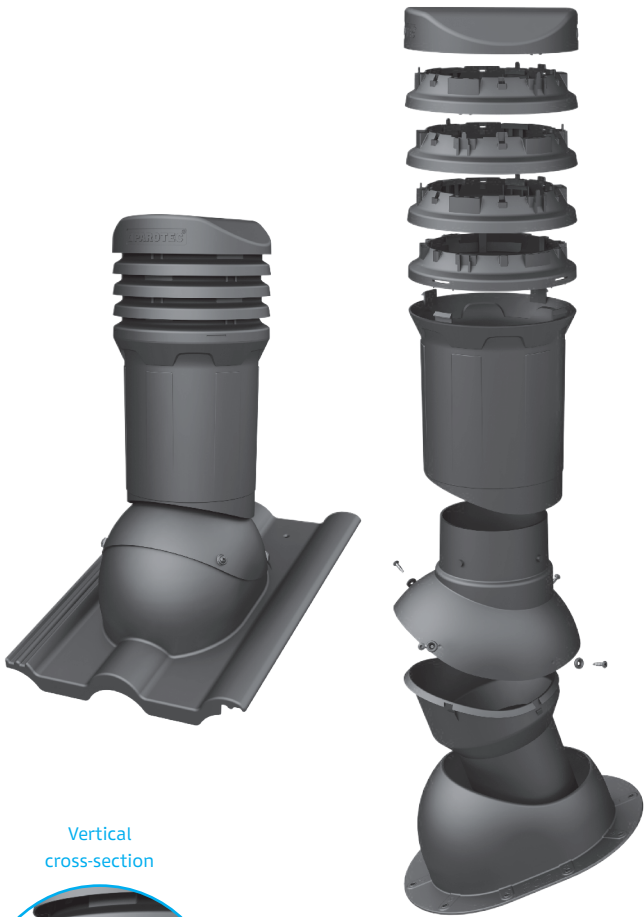
# ROOF VENT SYSTEM

## PAROTEC ROOF VENTS

A component of the roof vent system that performs the function of removing moisture from the interior and bringing fresh air into the building. Two types available – with condensate drain and insulated (prevents heat loss and condensate formation in the pipes and protects against possible damage and corrosion).

## PAROTEC ACCESSORIES FOR ROOF VENT SYSTEM

A wide range of products that provide proper ventilation of the building. The product line has been designed with an eye for consistency in terms of visuals, allowing for a unified effect on the roof and an aesthetically pleasing appearance for the entire building.



Vertical cross-section



### roof vent with condensate drain (125 mm)

material	polypropylene
cowl height	375 mm
inner diameter	125 mm
adjustment range	0–50°



### insulated roof vent (125 mm)

material	polypropylene
cowl height	375 mm
inner diameter	125 mm
adjustment range	0–50°



### sewer vent

material	polypropylene
cowl height	247 mm
inner diameter	125 mm
adjustment range	0–50°



### slope vent

material	polypropylene
cowl height	105 mm



### antenna passage

material	polypropylene, TPV
cowl height	184 mm
adjustment range	20–90 mm
adjustment range	0–50°



### solar passage

material	polypropylene, TPV
cowl height	105 mm
wire diameter	6–48 mm



### flexible connecting pipe

material	HD polyethylene
length	540 mm
diameter	125 mm
reduction	125   110   100 mm
color	black

#### Roof Passages for Concrete Roof Tiles

- D01 Euronit profile S, Creaton Gothenburg
- D02 Euronit extra, Creaton Heidelberg
- D03 Braas – Double-S, IBF – Double-S, Nelskamp-S, ProDach – Double-S
- D04 Braas Harz, Nelskamp Sigma
- D05 Braas Frankfurt, Benders Mecklenburg, Prodach Double Roman
- D06 Braas Harz, Nelskamp Sigma
- D07 Braas Tegalit Protegon
- D08 Benders Palema S
- D09 Nelskamp Finkenber, IBF Double Roman, Beaver Tail Tiles in Crown Coverage
- D11 Braas Tourmaline
- D12 Röben Monza Plus
- D21 Braas Teviva, Creaton Cape Town



#### Color Chart — Ventilation

	RAL 3009 chestnut
	RAL 7016 anthracite
	RAL 7024 graphite
	RAL 7046 gray*
	RAL 8004 brick
	RAL 8017 brown
	RAL 9005 black

\*only available for P02 type



**Parotec Sp. z o.o.**

ul. Stefana Batorego 97

62-081 Batorowo

ID NR: PL7773229955

**Contact**

E-mail: [export@parotec.pl](mailto:export@parotec.pl)

Kom: +48 570 799 030

[www.parotec.pl](http://www.parotec.pl)

