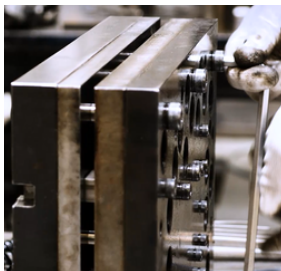


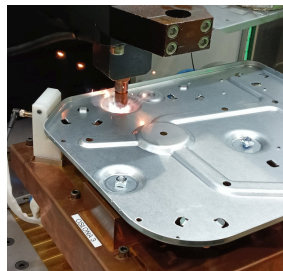
OUR SERVICES



Stamping



Die manufacturing



Spotwelding



Washing



Assembly



Laser cutting

Contact:



WEB

www.sohbi.pl



TEL

(+48) 56 649 56 00



E-mail

biuro@sohbi.pl



address

Ostaszewo 57H, 87-148 Lysomice, Poland



WE SUPPORT



WSK



System
zarządzania
IATF 16949:2016
ISO 9001:2015
ISO 14001:2015

www.tuv.com



POLSKIE CENTRUM
AKREDYTACJI

WERYFIKACJA
EMAS



POLSKIE CENTRUM
AKREDYTACJI

CERTYFIKACJA
SYSTEMÓW
ZARZĄDZANIA

ONE SOHBI! ONE TEAM!



SCPL
Sohbi Craft Poland

METAL STAMPING EXPERT

Producer of high quality
stamped metal parts and
stamping dies



sohbi.pl

OUR PRODUCTS

AIR BAG SAFETY PARTS



SEAT FRAME



COMPRESSORS DEEP DRAWING



SUSPENSION THICKNESS 8.0MM



CAR AUDIO



STEERING COLUMNS



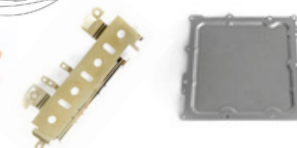
HOME APPLIANCE & HEAT PUMP



START/STOP SYSTEM FILM CAPACITOR



POWERTRAIN DC/DC CONVERTER



OUR VISION

Balance between harmonious growth of society and company's profits, leading in harmonious development.

OUR MISSION

Polish culture + Japanese Technology = Make the lives of our families and society safer.

One family a million challenges!

ABOUT US

Sohbi Craft Poland Sp. z o.o. is part of the global Sohbi group, which successfully operates on the arena of internationally, providing the highest quality products for the automotive, home appliances and consumer electronics industries. We started our operations in 2007 in Ostaszewo (Poland, EU), becoming one of the most important players in its industry, specializing in the production of stamped parts from various types of metals. Our success is due to the combination of the latest technologies, experienced staff and an uncompromising approach to quality, confirmed by certificates and customer recognition.

OUR CUSTOMERS

