



FIFISH
UNDERWATER ROBOT

UNDERWATER ROBOTS



TERRA HEXEN

DRONE DETECTION AND NEUTRALIZATION SYSTEMS

FIFISH Product Series

Compact & Powerful ROVs · Driven by AI

Sport ROV

100m Depth Rating



FIFISH V-EVO

383mm(l) x 331mm(w) x
143mm(h)
4.1kg

Underwater Film & Content Creation,
Diver Buddy, Treasure Hunting

Inspection ROV

100m-200m Depth Rating



FIFISH E-GO

430mm(l) x 345mm(w) x
170mm(h)
5.1kg

FIFISH PRO V6 PLUS

383mm(l) x 331mm(w) x
158mm(h)
5.0kg



FIFISH V6 EXPERT

383mm(l) x 331mm(w) x
143mm(h)
4.6kg



Professional Industry-grade
Inspections, Multi-tool Integrations

Maritime ROV

350m Depth Rating



FIFISH PRO W6

700mm(l) x 469mm(w) x
297mm(h)
23kg

Underwater Maintenance
Operations, Deep-sea Inspections

FIFISH V-EVO — Consumer-class Omnidirectional Underwater Drone



**Compact Size,
Rugged Power**

70N Clamping Force & Lock
70N Carry & Drag Weight

4K

4K · 60 FPS Camera



AI Vision Lock



166° FOV Wide-Angle Lens



2 Knots Flow Resistance



360° Omnidirectional Movement



-10~60°C Operating Temperature



Up to 4 Hours Dive Time
(4 hrs. hover, 1 hr. full mobility)



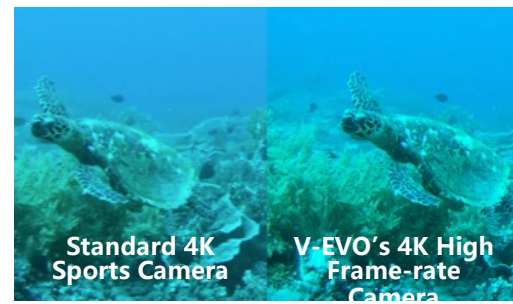
100m Dive Depth



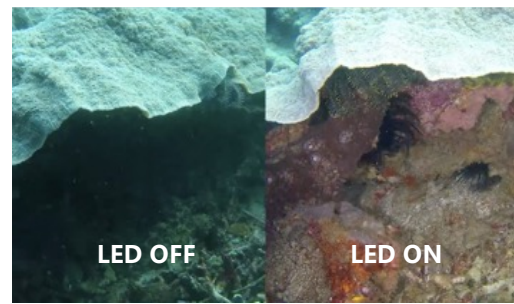
3 Knots of Speed



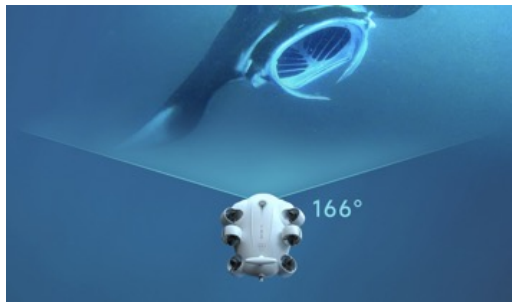
5000 Lumen LED Lights



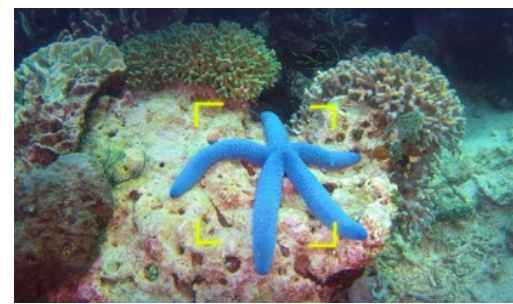
4K·60FPS High Frame-rate Camera



5000 Ultra-bright Lumen LEDs



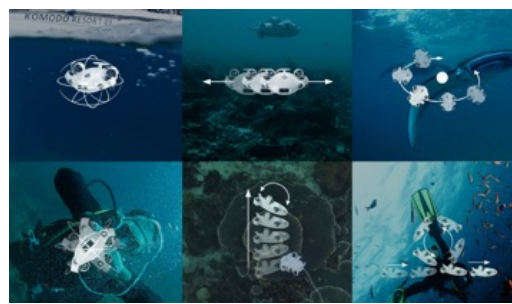
166° Ultra Wide-angle Viewing & Recording



AI Vision Lock



VR Immersive Control



360° Omnidirectional Mobility

FIFISH V6 EXPERT — Professional-grade Underwater Productivity Solution



- 12 Megapixel Resolution
- 166° FOV Wide-Angle Lens
- 4K UHD Camera
- 6000 Lumen LED Lights
- DNG (RAW) Image Format
- 240 FPS SloMo Capture
- Pluggable SD Card Slot
- 360° Omnidirectional Movement
- Posture Lock Function
- Depth Hold Function
- 3 Knots of Speed
- Q-IF Multi-Tool Extension Interface
- Safe & Fast Charging
- Onshore Power Supply System (Optional)

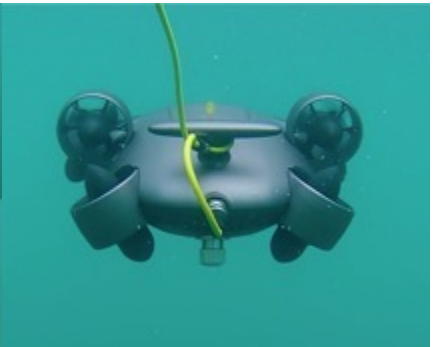
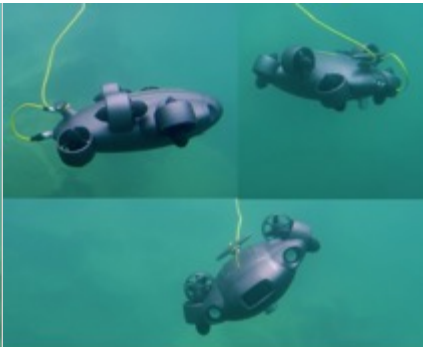
Multi-Tool Extensions, Unlimited Possibilities

Onshore Power Supply, Long-lasting Dives

Self-developed Q-Motor System, Enhanced Durability

360° Omnidirectional Underwater Movement

Streamlined, Robust & Reliable Design



FIFISH E-GO — Next-Gen Operational Underwater Robot



Efficient Movement

3+ Knots of Speed
Agile & Quick
Omnidirectional Movement

Rugged Resistance

Q-Steady 3.0 Self-Stabilization
AI Vision Station Lock

AI Powered

Image & Color Enhancements
Fish Detection & Counting

Extensive Power

2.5+ hrs. Operational Time
Seamless Battery
Replacement

Precise Control

360° Omnidirectional Movement
Customized Controls &
Movements

Fast-Charge Enabled

90% Power in 50 Minutes
Portable Power Station

Robust Add-ons

Up to 6 Attachment Ports
5kg Underwater Payload

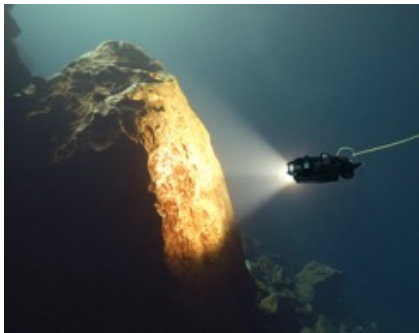
Modular Design

Instant Power Replacement
9 sec. Accessory
Installation & Disassembly

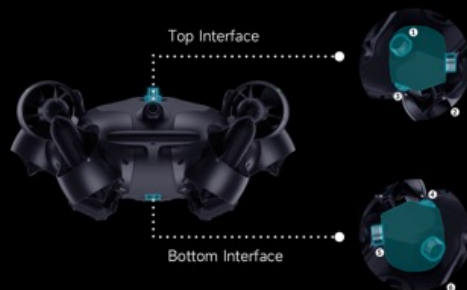
Ultra Wide Lens

146° Underwater Wide-
angle FOV
10cm Macro Focus Range

Quad-Light Illumination System



Six Ports, Maximum Efficiency



Efficient Quick-release Modules



Dual Hot-Swappable Power System



Smart & Portable Charging Station





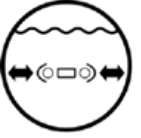



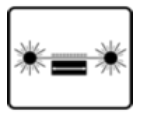





(*Product specifications, features, and package contents may change without prior notice due to ongoing improvements.)

FIFISH PRO V6 PLUS — Industrial-grade Advanced Inspection ROV

150m Diving Depth, Greater Power & Capabilities, Simple to Operate



-  360° Omnidirectional Movement
-  Posture Lock Function
-  Depth Hold Function
-  Intelligent Altitude Lock
-  Intelligent Distance Lock
-  Q-IF Multi-Tool Extension Interface
-  Smart Collision Avoidance (Optional)
-  Smart Terrain Scan
-  Laser Scaler Function
-  4K UHD Camera
-  6000 Lumen LED Lights
-  Pluggable SD Card Slot

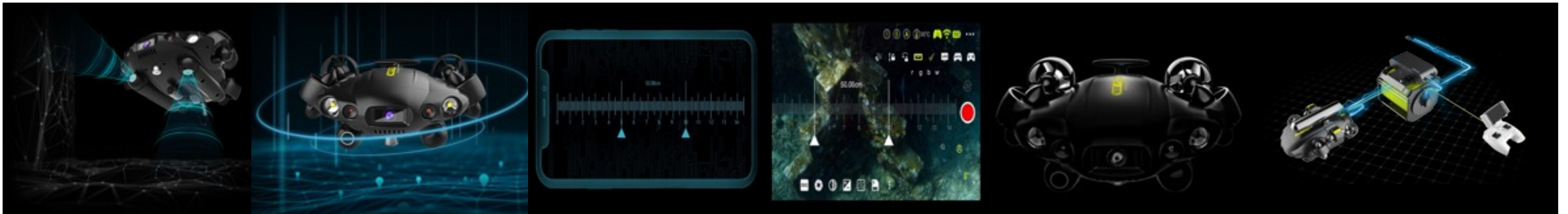
Intelligent Distance & Altitude Lock

Real-Time Location Data

AR Ruler & Laser Scaler System

Upgraded Q-Motor Power System

Onshore Power Supply, Long-lasting Operations



FIFISH PRO W6 — Enterprise-grade Industrial Underwater ROV Platform



Modular Design
Advanced Add-Ons
Powerful & Precise
Exceptional Stability
Superior Battery



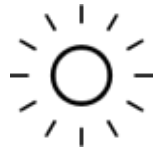
350m
Depth Rating



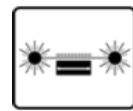
4 knots
of Speed



Dual 4K
Camera System



12000 Lumen
LED Lights



Laser Scaler
System



Robotic Arm
(Replaceable Claw)



8-Hour Operating
Time + Swappable
Battery



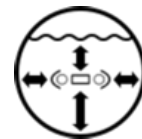
5 Q-IF Multi-Tool
Extension
Interfaces



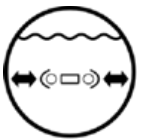
Posture Lock
Function



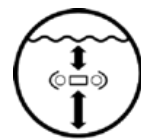
Depth Hold
Function



Smart Station
Lock (Optional)



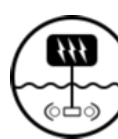
Smart Distance
Lock (Optional)



Smart Altitude
Lock (Optional)



Smart Collision
Avoidance
(Optional)



Onshore Power
Supply System
(Optional)



Underwater Quick
Positioning System
(Optional)

Professional Add-ons

Offshore Structural Inspections



Image Sonar



Distance And Altitude Lock Sonar



USBL



Underwater Quick Positioning System (U-QPS)



Double Ruler Clip



Station Lock Module

Search & Rescue



Image Sonar



Side Scan Sonar



Manipulator



HOOK



Q-Camera



Underwater Quick Positioning System (U-QPS)



LED Light Mount

Conservation & Hydropower



100ml Water Sampler



500ml Water Sampler



Manipulator



Sludge taker



WiFi Or Remote Control Kit



Onshore Power Supply System

Aquaculture



Turbidity Sensor



PH Sensor



Salt Sensor



Q-Camera



Oxygen Sensor



100ml Water Sampler



Underwater Dozer



Fishing Net



WiFi Or Remote Control Kit



Onshore Power Supply System

Applications & Scenarios

Sample Collection
Online Monitoring
Pollution Traceability



Environmental Monitoring

Underwater Engineering
Intelligent Operation & Maintenance



Offshore Wind Energy

Structural Detection
Corrosion Detection
Propeller Inspections



Ship Hull Inspection

Cage & Net Inspection
Cage Cleaning
Fish Feed Monitoring



Aquaculture

Sonar Search
Underwater Location Tracking
Salvage & Rescue



Emergency Search & Rescue

Visual Inspection
Damage Measurement



Hydropower & Dams

Internal Evaluation of Pipe Network
External Patrol Inspection of Pipeline



Municipal Public Security

Underwater Structure Detection and Evaluation
Scouring and Hollowing Detection and Evaluation



Public Infrastructure

Tracking and Shooting
Cave Exploration
Live Snorkeling



Leisure & Exploration

Ship Hull Inspections



Industry Challenges

- Manual investigation, low operating efficiency
- Frequent testing, time-consuming and costly
- The environment is complex and the operation is limited

FIFISH Solutions

- Daily maintenance, annual maintenance
- Sudden failure, timely repair
- Special hull inspection, collaborative operation

Core Values

- Improve efficiency by more than 70%
- Reduce costs and attain timely maintenance
- Expansion of capabilities to avoid risks



Sacrificial Anode Inspections



Propeller Inspections



Keel Inspections



Ballast Gauge Inspections



Ship Detector Monitoring



Propeller Shaft Checks



Stern Tube Bearing Checks



Bulbous Bow Inspections

Renewable Energy – Offshore Wind Power



Industry Challenges

- ❑ Biological attachment and metal structure corrosion of underwater part of pile foundation;
- ❑ Separation of submarine cable from burying trench (exposed and suspended);
- ❑ Submarine cable patrol inspection;
- ❑ Detection of falling off of submarine cable bending limiter.

FIFISH Solutions

- ❑ Underwater pile foundation detection;
- ❑ Submarine cable patrol inspection;
- ❑ Submarine topographic survey.

Core Values

- ❑ Evaluating the current conditions of pile foundations, and then providing pile foundation cleaning services;
- ❑ Evaluating the submarine cable condition and providing data basis for submarine cable reembedding;
- ❑ Driving big funds with low cost, realizing precise investment.



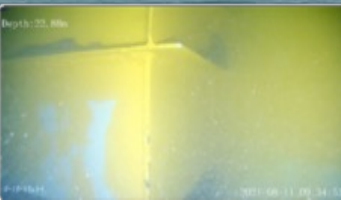
Sacrificial Anode Inspection & Cleaning



Submarine Cable Maintenance



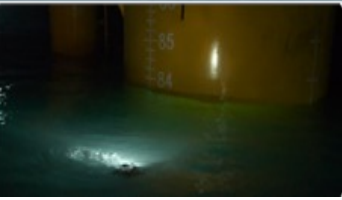
Corrosion & Welding Checkups



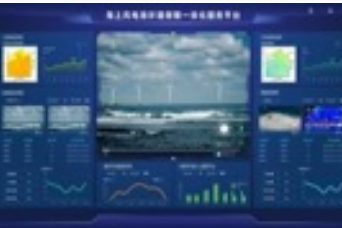
Bend Restrictor Inspections



Pile Inspections



Offshore Wind Farm Construction Operations



Internal Pile Inspections



Jacket Grout Inspections

FIFISH ROV Applications

Offshore Renewable Energy

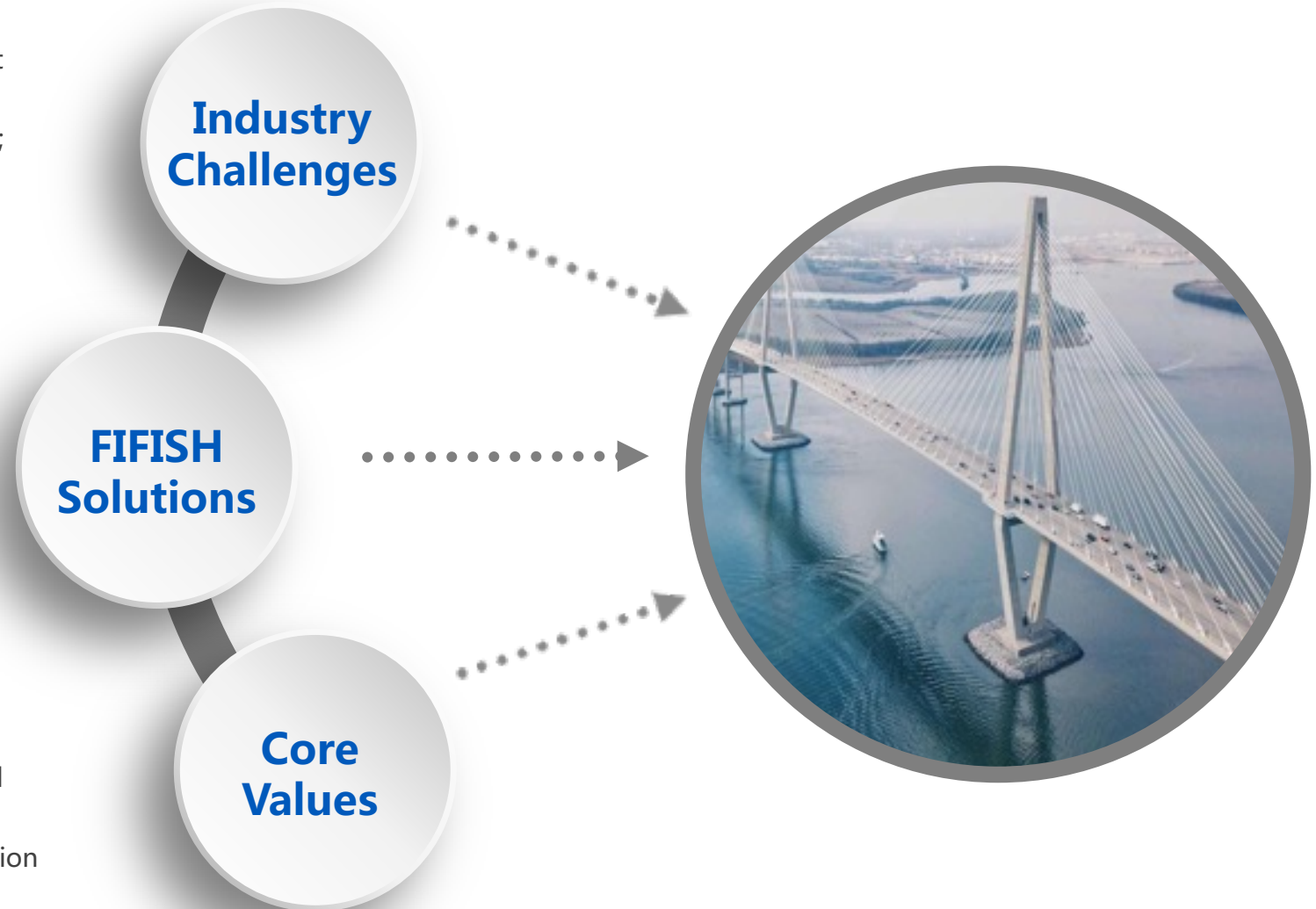


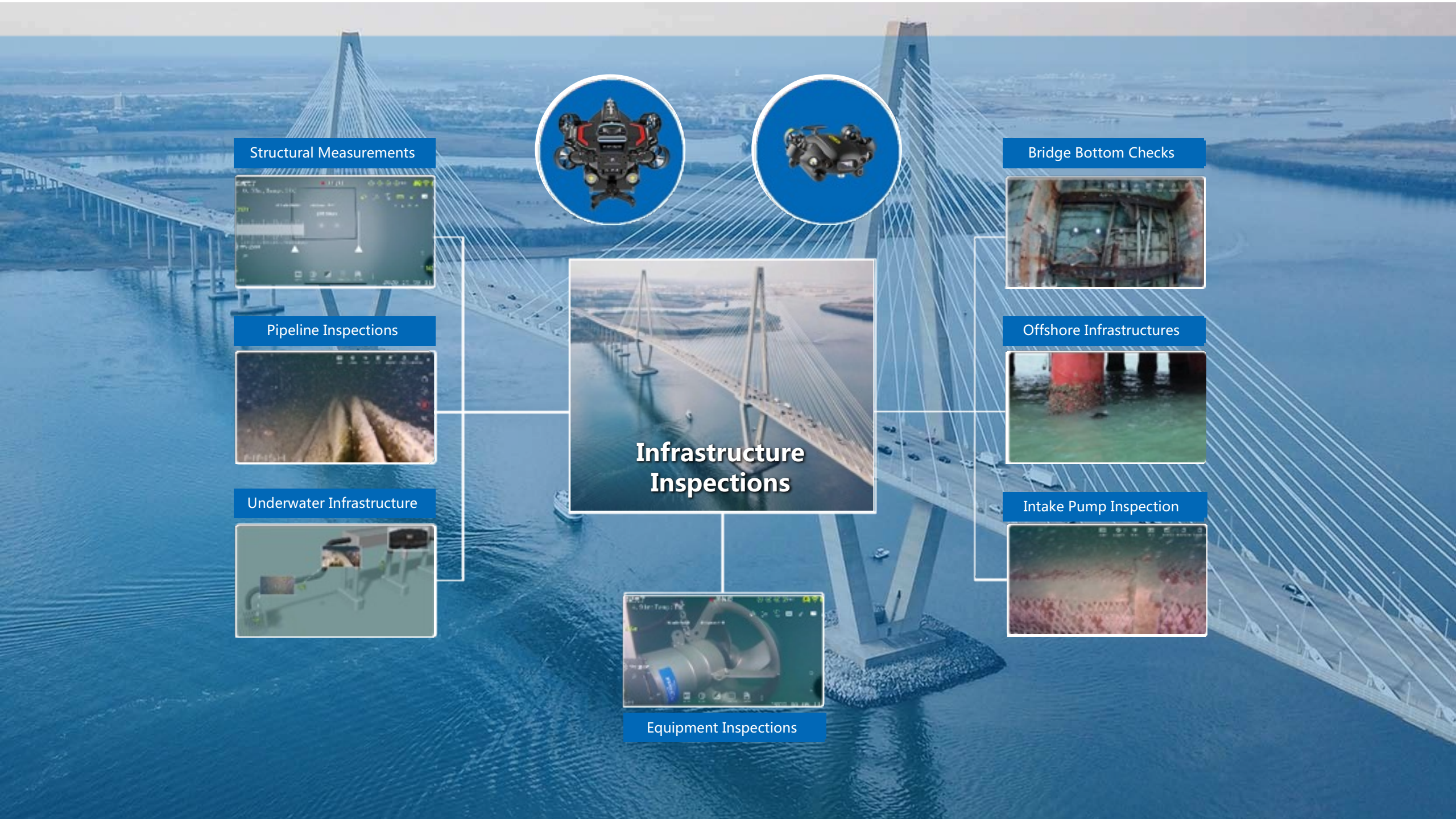
Infrastructure, Bridges, Reservoirs

- ❑ Complex hydrological environment around underwater members;
- ❑ Limited power supply at work sites;
- ❑ High operation risk.

- ❑ Non-labor operation;
- ❑ Self-provided external batter ROV power supply;
- ❑ Comprehensive application of multiple sensors to penetrate turbid water, overcoming the limitations of complex application scenarios.

- ❑ Upgrading data types
- ❑ Upgrading data coverage and data density;
- ❑ Intelligent cloud and resumption analysis.





Structural Measurements



Pipeline Inspections



Underwater Infrastructure



Bridge Bottom Checks



Offshore Infrastructures



Intake Pump Inspection



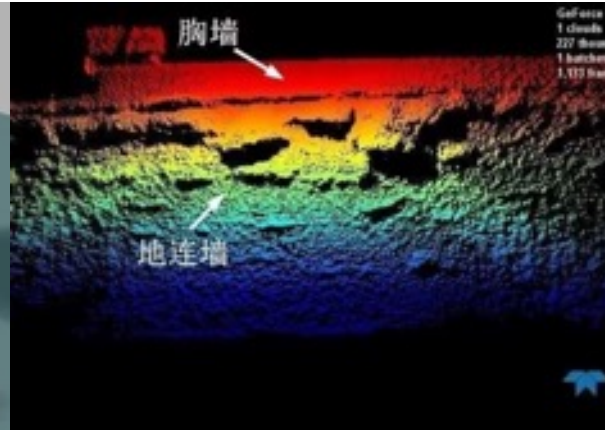
Equipment Inspections

ROV Applications

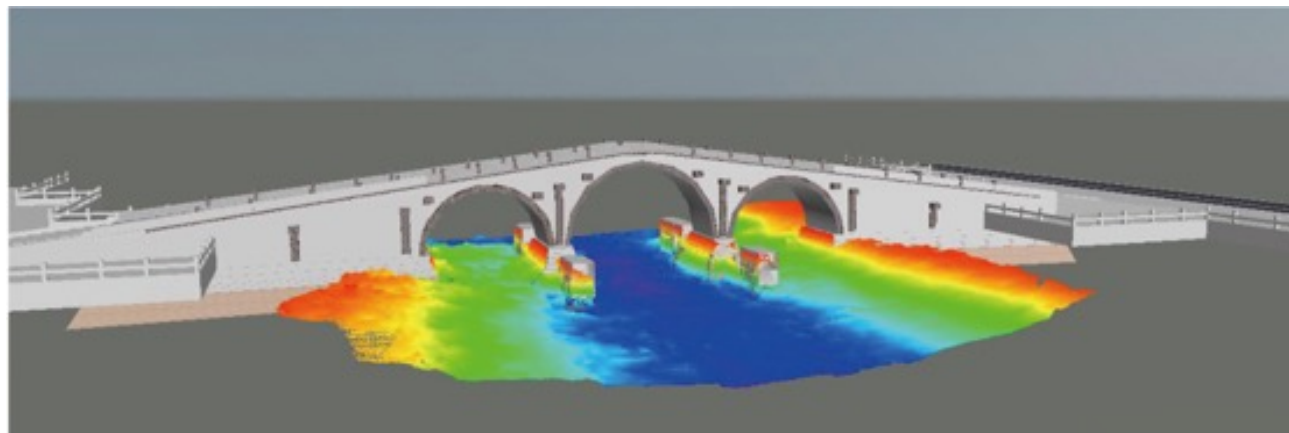
Public Infrastructure Inspections



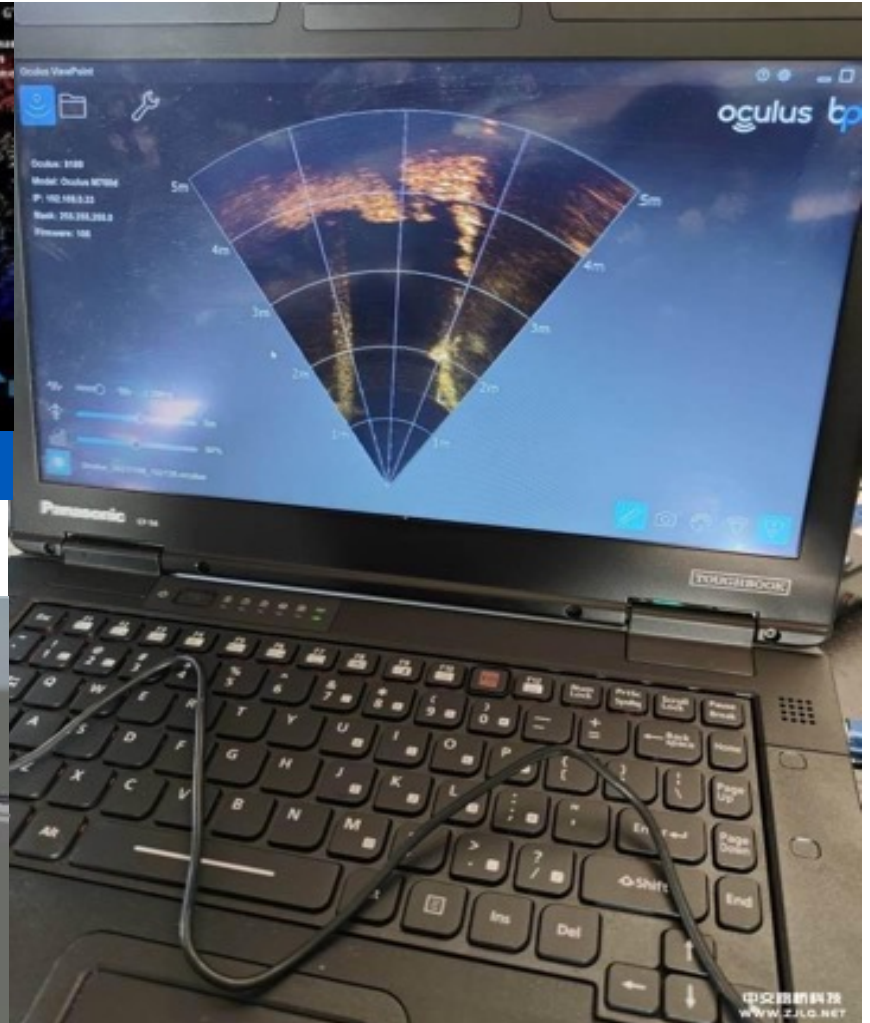
360° Omnidirectional Inspections



Multi-beam Sonar Inspection

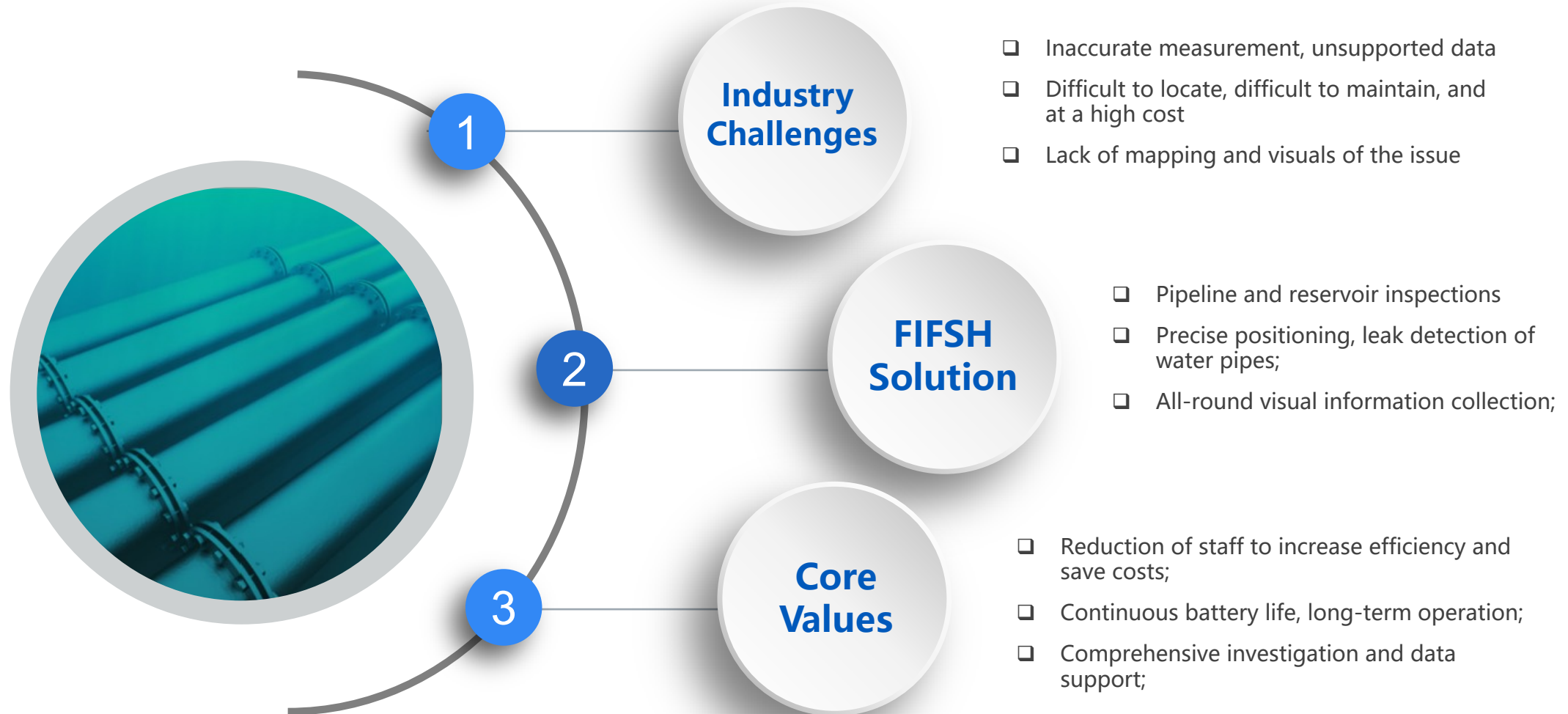


Bathymetry Mapping



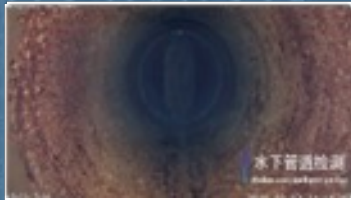
2D Image Sonar Inspections

Underwater Pipeline Inspection

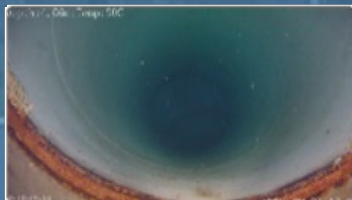




Subsea Pipeline Inspection



Supply Pipeline Inspection

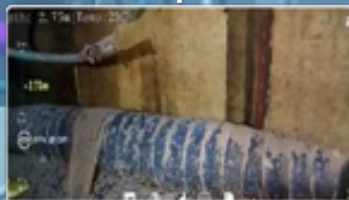


Underwater Pipeline Inspection

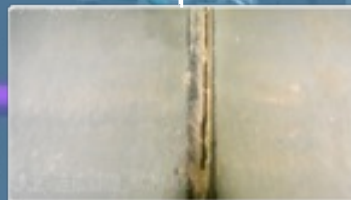
Wall Damage Evaluations



Defect & Damage Detection



Pipeline Evaluation



Water Pipe Connection Checkup

Emergency Search & Rescue

- ❑ Can't provide rescue plan quickly
- ❑ The rescue environment is complex and dangerous
- ❑ Short rescue time and low efficiency

Industry Challenges

- ❑ Replace manual search and rescue, with increased safety
- ❑ Strong and bright lighting, without needing to worry about muddy waters
- ❑ Equipped with abundant accessories to assist search and rescue operations

FIFISH Solutions

- ❑ Improve emergency rescue efficiency
- ❑ Accurate information to ensure rescue safety
- ❑ QYSEA Intelligent Cloud, to review and analyze missions

Core Values



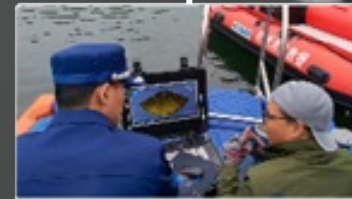
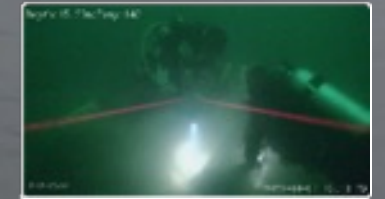
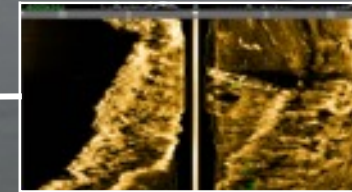
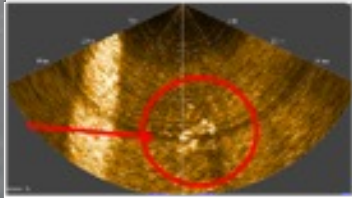
Medium-sized objects such as vehicles and equipment sunken within the waters:

The FIFISH can quickly identify and locate sunken objects at depths of up to 350m, through its underwater imaging sonars.



Large objects such as shipwrecks and sunken containers:

Quick identification capabilities with steady and reliable positioning with the side-scan sonar attachment.



Rescue and salvage individuals who fell into the water.

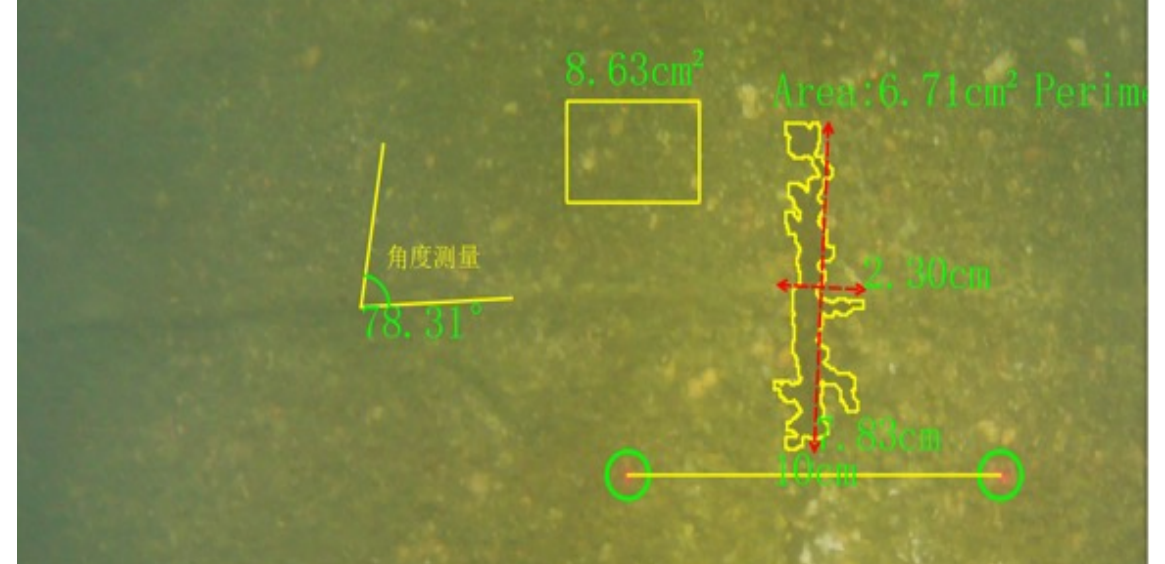
Quickly identify and locate subjects with underwater sonar systems and dual 4K camera.

QYMT – AI Measuring Solution



QYMT is a software tool solution developed for measuring underwater objects. When combined with equipment such as underwater cameras, dual-beam lasers and imaging sonars, it can accurately measure the size data of underwater objects in real-time or offline.

QYMT is designed specifically for this purpose and is compatible with the FIFISH E-GO, FIFISH PRO V6 PLUS, FIFISH PRO W6 & FIFISH V6 EXPERT



Using the FIFISH PRO V6P PLUS and QYMT, any defect location, size, and area on the turbine blades can be detected with high precision.

These inspections can be performed in real-time or offline after video recording, enabling the underwater robot capture images of defects as well as measure defect data, providing data support for professionals to evaluate risks.



Thank You!
Let's Stayin Touch.



TERRAHEXEN
DRONE DETECTION AND NEUTRALIZATION SYSTEMS