

BOSCAROL GROUP

TIMTEC 
TIMTEC DEFENSE

BUSINESS DEVELOPMENT
products, development, cooperation

+386 51 628 790
sales@timtecdefense.eu
www.timtec.eu

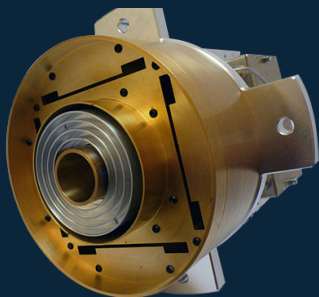


BOSCAROL GROUP
TIMTEC 
TIMTEC DEFENSE

»» SPACE DOMAIN

*On orbit, interplanetary and
earth/space/earth solutions.*

The integration of defense and space technologies is transforming security, unlocking powerful new capabilities for the future. By combining space innovation with advanced defense systems, TIMTEC offers unmatched situational awareness, real-time data insights, and the agility to tackle emerging threats. This fusion enhances operational effectiveness and ensures long-term resilience in a rapidly changing security landscape. Step into the future of defense, where space technology and advanced systems deliver smarter, more secure solutions. Shielding the future.



Dual-band dual-polarization auto-track S+X-band feed FSXD

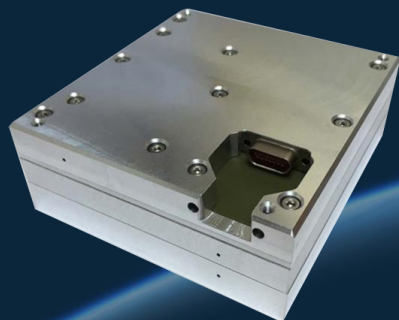
Dual-band dual-polarization (switchable RHCP/LHCP on the S-band and simultaneous RHCP/LHCP on the X-band)

Prime-focus feed with an optional auto-track feature

Pltra low-noise amplifiers for both bands are available

Feeds are optimized for the reflectors with f/d ratios between 0.35 and 0.45

ELEP/TTD joint undertaking



High-Speed X-Band Transmitter for Nano- and Micro-satellites

Up to 200 Mbit/s data transmission

RF output frequency range: 7.8 - 8.4 GHz

RF output power: 2 W, 4 W

Modulation type: O-QPSK

Small size (95x90x35 mm)

Excellent power efficiency

FEC data encoding (CCSDS)

Differential data encoding

ELEP/TTD joint undertaking



Satellite Tracking Antenna System

1.8m to 5.4m dish size

Two axis configuration: Azimut 380°, Elevation ±90°

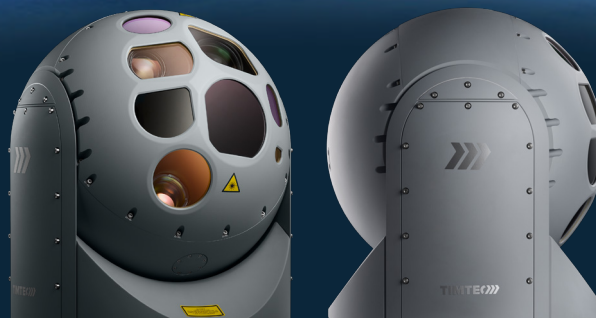
< 0.01 deg. pointing accuracy

Azimuth Max Velocity > 60°/s

Azimuth Max Acceleration > 60°/ s²

Elevation Max Velocity > 20°/s

Elevation Max Acceleration > 50°/ s²



Lucanus SP - space applications EO gimbal

Rugged design and electronics

Advanced liquid temperature control system

Suitable for intersatellite optical communication

Proximity operations enabler

On orbit visual inspection



Open Eye - video and data coms interchange

Scalable and modular hardware design

4G/LTE, 5G, Wi-Fi, LAN, SD-WAN Networking

MESH/MIMO tactical datalink agnostic (L3, TWS, SILVUS, PS, WR)

AI topology self-healing integration

AE265, SALSA20 datalink encryption

Omni antenna for mobile space applications

Compact size for mobile platforms (rover)

Mass < 200g

Broadband performance > 100Mbit/s

Circular polarization

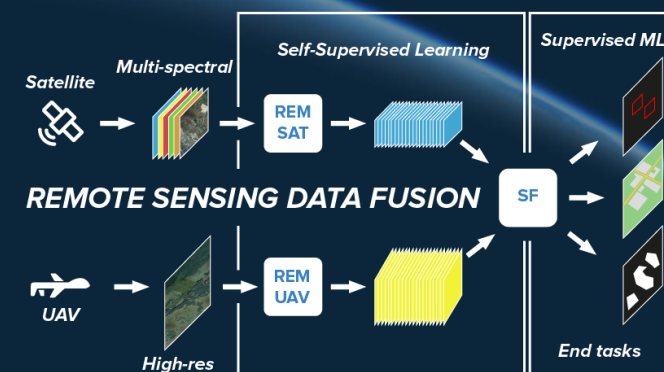
Hemispherical radiation pattern

Radiation efficiency > 80%

Temperature range for space and deep space app.



ELEP/TTD joint undertaking



SPACEA011-EN / 2025-04

FRI/TTD joint undertaking

© 2025 TIMTEC Defense, development and system production, Ltd.

www.timtec.eu | sales@timtecdefense.eu

TIMTEC Defense Ltd.

Goriška cesta 6c, SI-5271 Vipava, Slovenia, Europe

