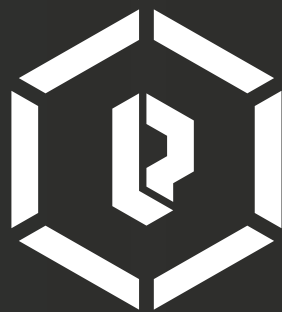




LPP HOLDING

COMPANY
PROFILE



LPP
HOLDING

EXCELLENCE THROUGH COOPERATION

LPP HOLDING

LPP Holding unites technologically focused companies with strong capabilities in development, manufacturing, and integration. We specialise in applying AI and autonomous technologies to deliver advanced, reliable solutions for complex challenges. Our work spans three core segments: Aerospace, Land Systems, and Civil Industries.

Our portfolio includes unmanned aerial and ground vehicles designed for full autonomy. These are powered by our cutting-edge navigation systems, capable of operating without any external signal in GNSS-denied and jammed areas. We also develop a wide range of avionics, including mission computers, MFDs, and backup instruments.

We also produce diagnostic units for armoured vehicles, integrated with AI-driven maintenance software. This software-first approach also drives our C4ISR platforms and intelligent video analysis applications.



HOLDING PRESENTATION CONTENT



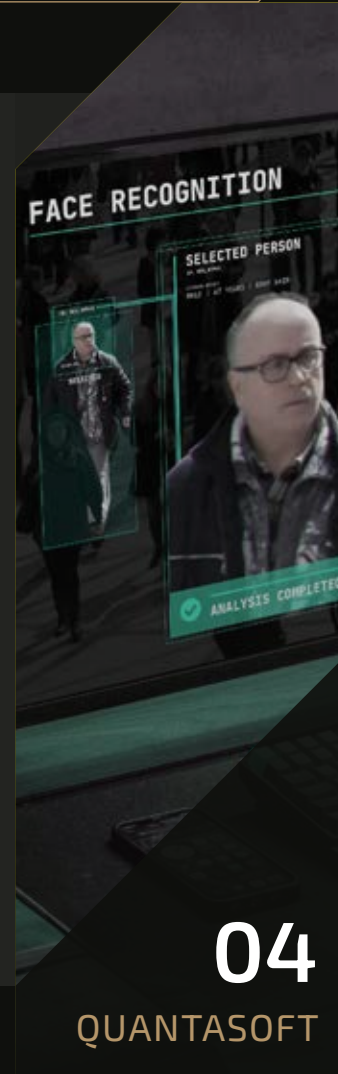
01
LPP



02
LPP UAS



03
ARCHER-LPP



04
QUANTASOFT





LPP

FUTURE IDEAS MADE NOW

LPP

LPP specialises in modular land systems. Its flagship product, the HORNET unmanned ground vehicle, features autonomous navigation that enables operation in unknown terrain without operator input. HORNET can be configured for logistics, combat, ISR, medical, or anti-drone missions. In the anti-drone configuration, it's equipped with radar, a weapon turret, and INTERCEPTOR drones, allowing it to secure contested areas while keeping personnel at a safe distance.

LPP also develops vetronics for armoured vehicles, including inertial navigation for GNSS-denied environments, Commander and Interface Data Terminals, and diagnostic units. These systems are integrated into the Czech Army's PANDUR II and T-72 platforms. Additionally, LPP provides C4ISR systems for enhanced situational awareness and predictive diagnostics software to increase operational efficiency and reduce costs.





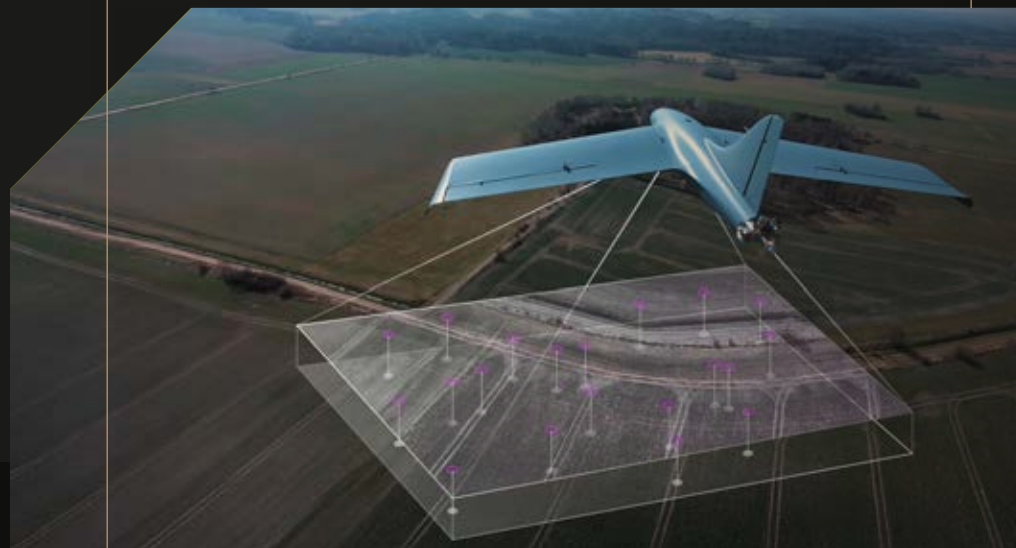
LPP
UNMANNED SYSTEMS

JAMMING-PROOF AUTONOMY

LPP UAS

LPP UAS is a dedicated branch focused on the development and production of modular unmanned aircraft systems (UAS). Its main product, the MTS, is a fully autonomous one-way attack UAS, customisable for various strike mission profiles.

The MTS is available in 3 configurations with different payload and range capabilities. Each aerial vehicle is equipped with LPP Visual Navigation, allowing it to operate without GNSS and despite electronic warfare. Designed for rapid deployment via a catapult, the system enhances operator safety and allows for quick exfiltration. LPP UAS also manufactures warheads and provides a ground control station with integrated mission planning software.





ARCHER
LPP

IN-HOUSE OPTOELECTRONICS

ARCHER LPP

ARCHER-LPP produces a wide range of optoelectronic systems under the Archer brand. Its product range includes thermal imaging sights, binoculars, monoculars, night vision devices, and other specialised surveillance devices. These systems are designed for various applications, including rifle scopes and handheld units for soldiers, optical reconnaissance systems and driving assistance for vehicles, and multispectral modular optoelectronic devices for perimeter protection.

In collaboration with other LPP Holding companies, ARCHER-LPP integrates its advanced thermal imaging technology into complex systems. This partnership led to the creation of the ARTS Target Acquisition System, used for mortar fire control, precision targeting, and target identification.





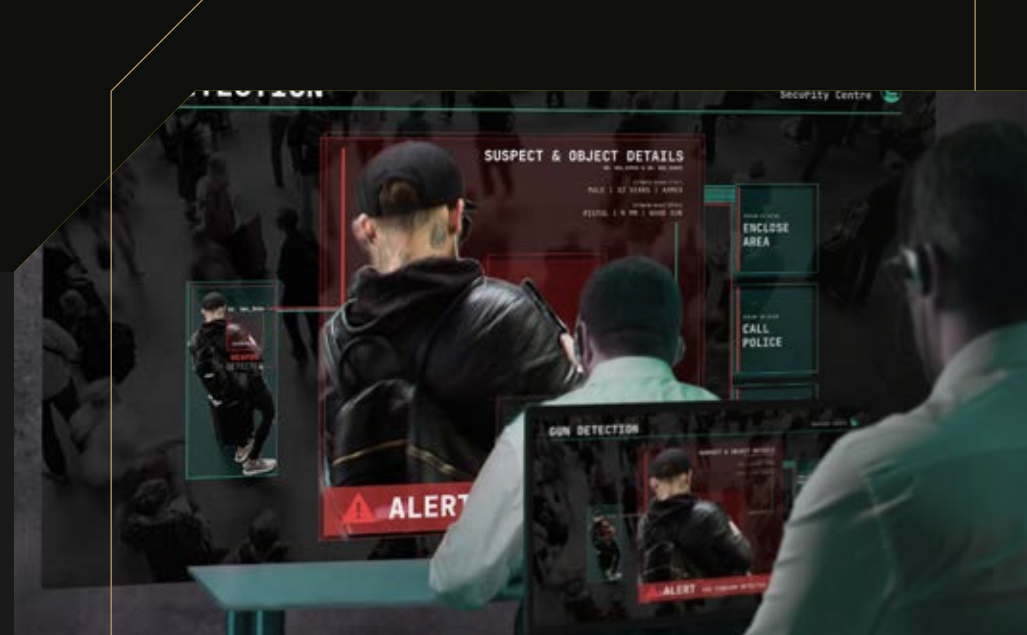
QUANTASOFT

INTELLIGENT VIDEO ANALYTICS

QUANTASOFT

Quantasoft specialises in biometrics, using AI, neural networks, and machine learning to enhance intelligent video analytics. Its systems support facial recognition, verification, and identification. They also perform object detection and classification, including firearms, vehicles, and number plates, and provide behaviour analysis for detecting suspicious activity.

Its product lineup includes three solutions tailored to different operational needs. *Inspector* is a forensic tool for offline image and video analysis with advanced data management. *Protector* is designed for real-time video monitoring and event detection, focused on perimeter protection. *Guardian* enables secure identification and access control by comparing facial data against a protected database, and runs across multiple devices, including PCs, tablets, kiosks, and smartphones.





AVIONFLY

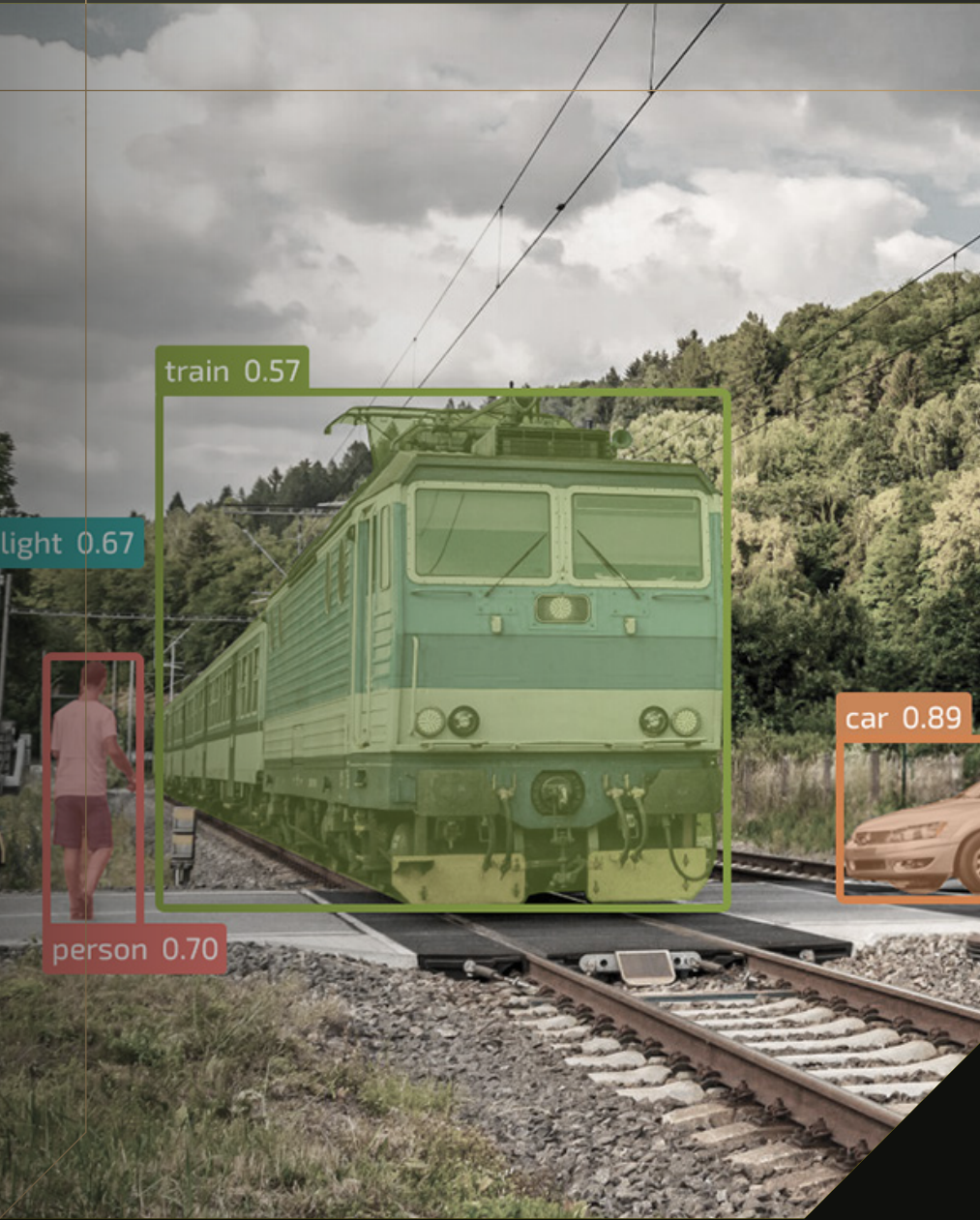
COMPLETE AVIONICS SUITE

AVIONFLY

Avionfly develops **modular integrated avionics**. The company built its expertise through years of producing classic analogue instruments for aircraft like the L-410 and L-39. This foundation now supports the development of advanced digital avionics tailored to modern aircraft requirements.

Its product lineup includes **mission computers, primary and standby multi-function displays, and attitude and heading reference systems**. The company also delivers systems for health monitoring, stores management, and specialised applications such as cloud seeding. These technologies have been integrated into aircraft, including the L-39NG and B-250.





T-CZ

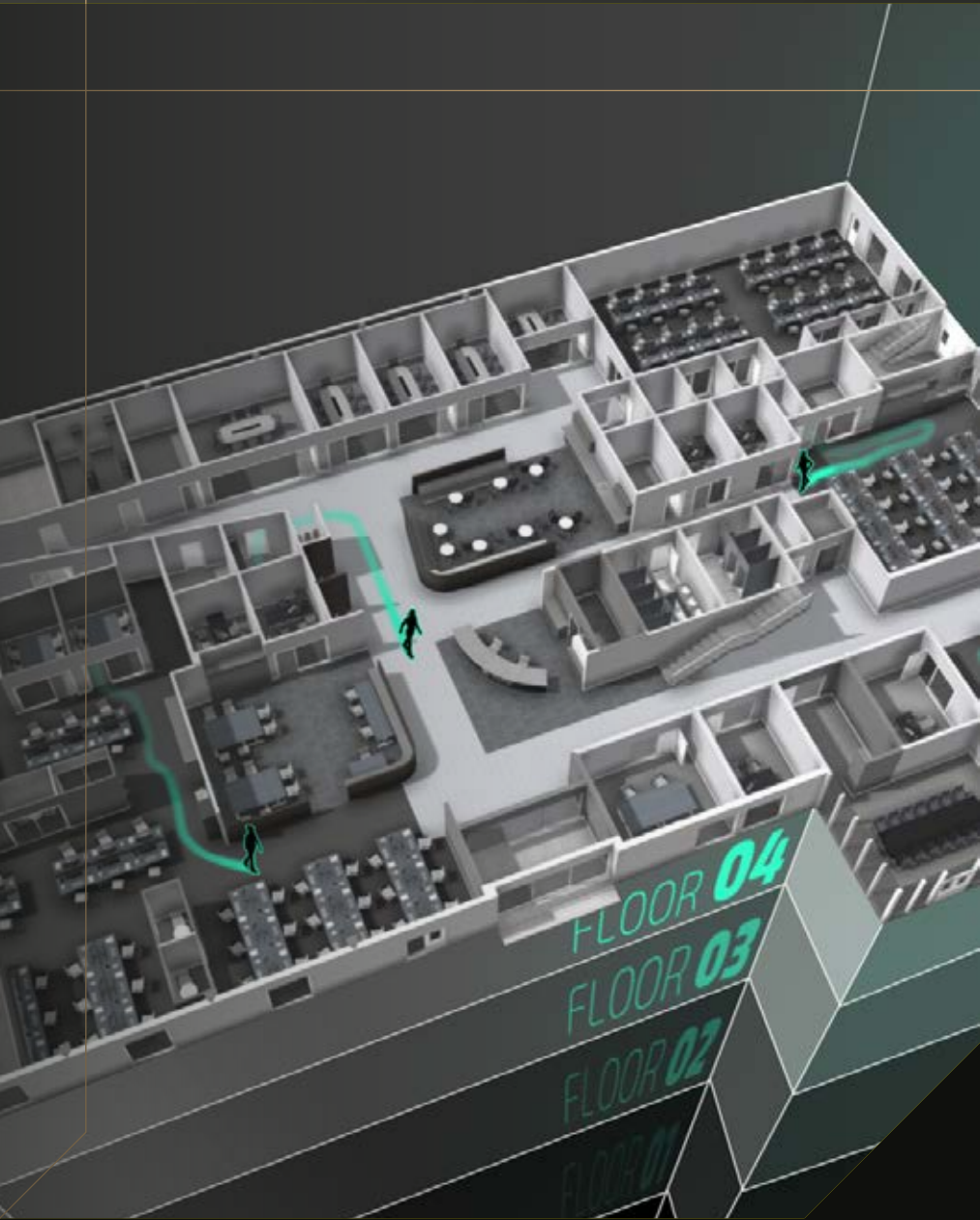
AUTONOMOUS RAILWAY MOBILITY

T-CZ

T-CZ, a successor of TESLA Pardubice, operates in the radar and radio communication industry. The company specialises in base and vehicle radios, radio network configurations, and custom antennas. It also improves railway safety with its proprietary AI-based anti-collision system, which uses neural networks and machine learning to segment tracks, detect hazards, and assess risks to help prevent accidents.

In collaboration with other LPP Holding companies, T-CZ develops AI-driven predictive diagnostics for rail vehicles. These solutions improve reliability, lower maintenance costs, and support long-term infrastructure planning.





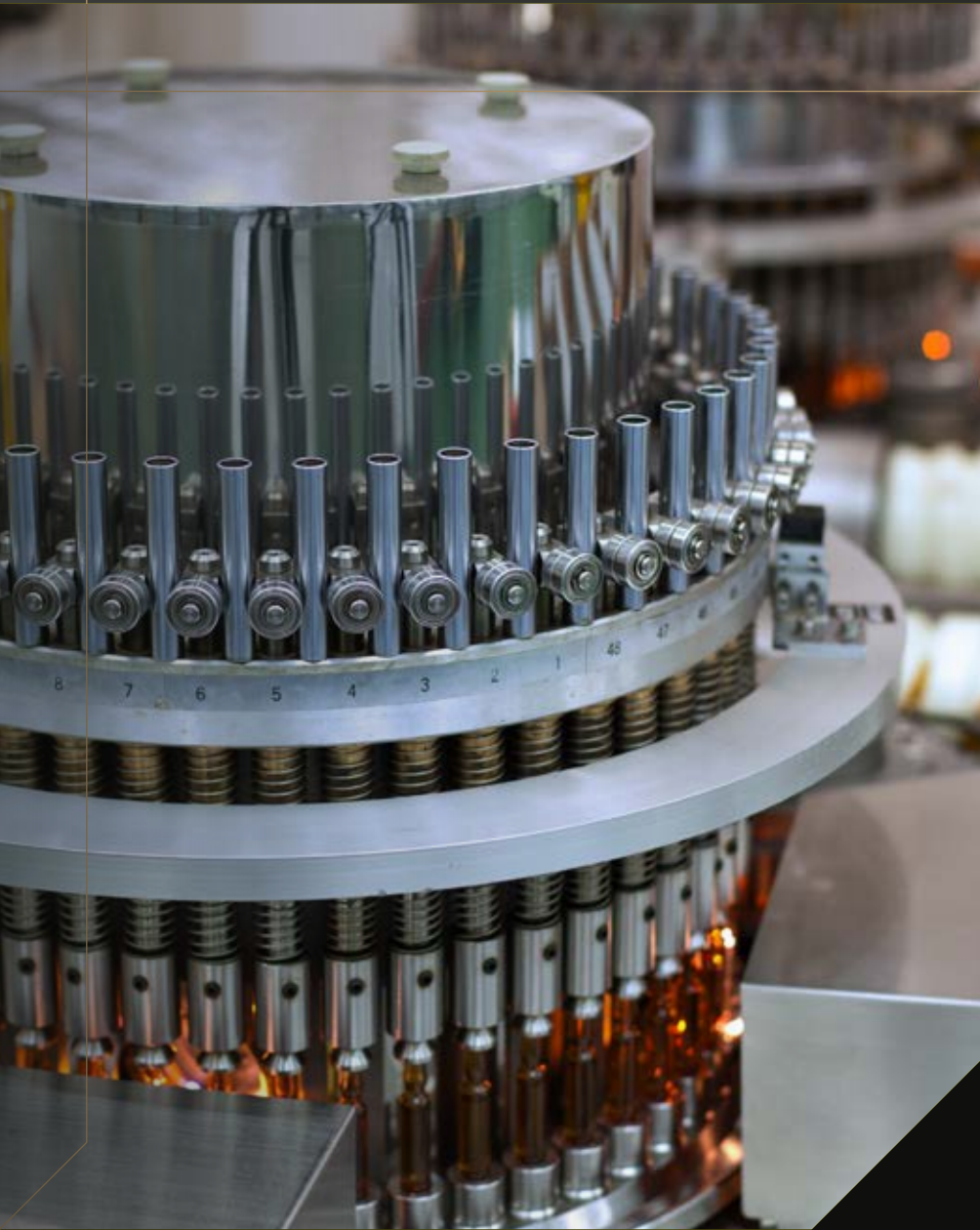
IMMERSION IN REALITY

2REALISTIC

2realistic specialises in developing applications that convert objects, spaces, or map layers into detailed 3D environments. The company creates digital twins of real-world areas, integrated with image analysis for real-time situational monitoring in 3D. These models are also used for prototyping, event simulation, and testing scenarios under realistic conditions.

In the aerospace and automotive sectors, 2realistic implements physical models in 3D environments to enhance mission simulation and debriefing. Additionally, the company strengthens training programs by visualising simulated data in virtual and augmented reality.





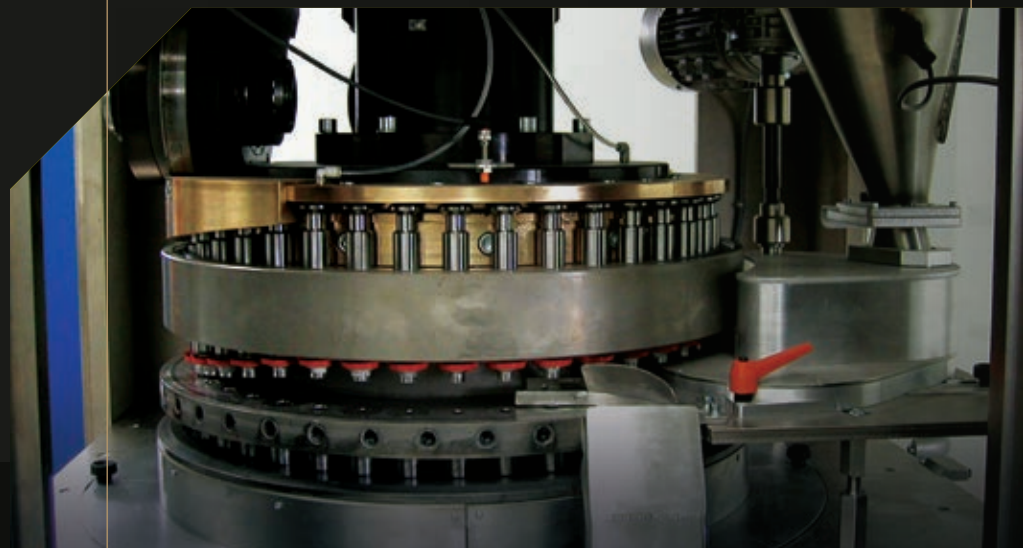
PRODUCTION AUTOMATION

KSB

KSB has over 30 years of experience in the mechanisation and automation of production across diverse industries, including engineering, defence, explosive environments, pharmaceuticals, food, and chemicals.

The company produces tailor-made professional machines to reduce overhead and increase production efficiency.

Its capabilities range from single-purpose machines built to customer specifications to complex assembly and quality control lines.





JRJ
SOLUTIONS

STATE DEFENCE

JRJ SOLUTIONS

JRJ Solutions delivers comprehensive solutions with a focus on state defence. Backed by a team experienced in both land and aerospace systems, the company offers flexible services tailored to meet diverse client needs.

The company operates under a licence from the Czech Ministry of Industry and Trade and covers everything from supplying individual components to delivering complex turnkey systems.

Its military specialisation includes ammunition, weapons, armoured vehicles, and aircraft. The company also ensures seamless integration of new technologies into existing platforms.



CONTACT US

L.P.P. holding a.s.

Pod Hajkem 406/1a, 180 00 Prague, Czech Republic

www.lpp-holding.com

+420 605 295 772

info@lpp-holding.com