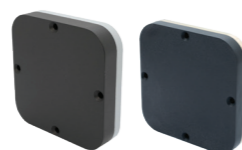




www.tualcom.com  
sales@tualcom.com

# CRPA ANTENNAS

 TUALANT	<b>K2</b>	<b>K21</b> S01 / S03	<b>K70</b>	<b>K110</b>	<b>K140</b>	<b>D200</b>	<b>D250</b>
<b>Dimensions (cm)</b>	4.3 x 6.2 x 1.2	10.5 x 10.5 x 2.3 10.5 x 10.5 x 1.7	7 x 7 x 1	11 x 11 x 2.2	14 x 14 x 2.2	20Ø*3.05	25Ø*2.4
<b>Weight (g)</b>	73	430 / 389	100	472	750	875	1300
<b>Connector</b>	SMA	SMA / MCX	MCX	SMA	SMA	SMA	MCX
<b>Signal Bands</b>	GPS: L1 BDS: B1 Galileo: E1	GPS: L1/L2/L5 BDS: B1/B2/B3 GLONASS: G1/G2 Galileo: E1/E5/E6 S03: L5 Centered	GPS: L1 BDS: B1 Galileo: E1 GLONASS: G1	GPS: L1/L2/L5 BDS: B1/B2/B3 GLONASS: G1/G2 Galileo: E1/E5/E6	GPS: L1/L2/L5 BDS: B1/B2/B3 GLONASS: G1/G2 Galileo: E1/E5/E6	GPS: L1/L2/L5 BDS: B1/B2/B3 GLONASS: G1/G2 Galileo: E1/E5/E6	GPS: L1/L2/L5 BDS: B1/B2/B3 GLONASS: G1/G2 Galileo: E1/E5/E6
<b>Number of Antenna Elements</b>	2	4	4	8	8	8	16
<b>Humidity</b>	95% No-condensing	95% No-condensing	95% No-condensing	95% No-condensing	95% No-condensing	95% No-condensing	95% No-condensing
<b>Storage Temp</b>	-55°C~+85°C	-55°C~+85°C	-55°C~+85°C	-55°C~+85°C	-55°C~+85°C	-55°C~+85°C	-55°C~+85°C
<b>Operating Temp</b>	-55°C~+85°C	-55°C~+85°C	-55°C~+85°C	-55°C~+85°C	-55°C~+85°C	-55°C~+85°C	-55°C~+85°C
<b>Impedance</b>	50 ohm	50 ohm	50 ohm	50 ohm	50 ohm	50 ohm	50 ohm
<b>Axial Ratio</b>	@zenith ≤1.5dB	@zenith ≤1.5dB	@zenith ≤1.5dB	@zenith ≤1.5dB	@zenith ≤1.5dB	@zenith ≤1.5dB	@zenith ≤1.5dB
<b>Polarization</b>	Right-hand circular polarization (RHCP)	Right-hand circular polarization (RHCP)	Right-hand circular polarization (RHCP)	Right-hand circular polarization (RHCP)	Right-hand circular polarization (RHCP)	Right-hand circular polarization (RHCP)	Right-hand circular polarization (RHCP)
<b>Peak Gain</b>	≥5.0dBi@Fc	≥5.0dBi@Fc	≥5.0dBi@Fc	≥5.0dBi@Fc	≥5.0dBi@Fc	≥5.0dBi@Fc	≥5.0dBi@Fc



MAKING RF VISIBLE