



www.tualcom.com  
sales@tualcom.com

# RADAR & ELECTRONIC WARFARE

	<b>DFD RECEIVER</b>	<b>IFM RECEIVER</b>	<b>ESM/ELINT RECEIVER</b>
<b>Dimensions (cm)</b>	15.2 x 14.7 x 3.0	15.2 x 14.7 x 3.0	41 x 26 x 7.5
<b>Weight (g)</b>	1060	700	8000
<b>Operating Voltage &amp; Input Current</b>	600 mA @ 12 VDC	400 mA @ 28 VDC	1800 mA @ 28 VDC
<b>Operating Temperature</b>	-40 C to +80 C	-40 C to +80 C	-40 C to +80 C
<b>Frequency Range</b>	2-18 GHz	2-18 GHz	2-18 GHz
<b>Instantaneous Bandwidth</b>	16 Ghz	16 Ghz	16 Ghz
<b>Frequency Sensitivity</b>	1MHz	1MHz	1MHz
<b>Frequency Precision</b>	≤ 3 MHz RMS	≤ 3 MHz RMS	≤ 3 MHz RMS
<b>Dynamic Range</b>	65 dB (-55, +10 dBm)	65 dB (-55, +10 dBm)	65 dB (-55, +10 dBm)
<b>Min. Pulse Width</b>	50 ns	100 ns	100 ns
<b>Max. Pulse Width</b>	CW	CW	CW
<b>PW Precision</b>	10 ns	10 ns	10 ns
<b>Connectors</b>	SMA Female Micro-D 15 Pin Female Micro-D 51 Pin Female	SMA Female Micro-D 15 Pin Female Micro-D 51 Pin Female	SMA Female MIL-STD-38999
<b>Environmental Condition</b>	MIL-STD-202F MIL-STD-810D	MIL-STD-810G	MIL-STD-810G
<b>EMI / EMC</b>	MIL-STD-461F	MIL-STD-461F	MIL-STD-461F



## ACTIVE RADAR REFLECTOR

**Dimensions (cm)**  
9.5 x 6.2 x 1.6

**Weight (g)**  
192

**Operating Voltage & Input Current**  
150 mA max @28 VDC

**Operating Temperature**  
-40 C to +80 C

**Frequency Range**  
5-18 GHz

**Max. Gain**  
>60 dB

**RF Attenuation Range**  
0-31 dB

**Input Voltage**  
16-32 VDC

**Programming Interface**  
RS 232

**Connectors**  
SMA  
9-pin Micro-D Socket

**Environmental Condition**  
MIL-STD-810G

**EMI / EMC**  
MIL-STD-461F



## RADAR TRANSPONDER

**Dimensions (cm)**  
11.7 x 11.7 x 3.7

**Weight (g)**  
750

**Output Power**  
10 dBm

**Band Width**  
40 mHz

**Dynamic Range**  
90 dB

**Frequency**  
10 - 10.6 GHz

**Input Voltage (Isolated)**  
1500 VDC

**Input Voltage**  
9 - 36 VDC

**Operating Voltage & Input Current**  
500 mA @ 28 VDC

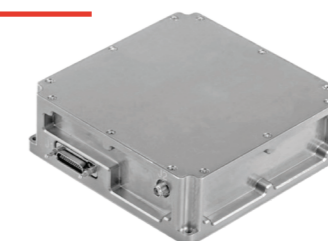
**Interface**  
RS 422, RS 485, Ethernet

**Sensitivity**  
- 80 dBm

**Connectors**  
25-pin Micro-D D-click,  
50 Ohm SMA

**Environmental Condition**  
MIL-STD-810G

**EMI / EMC**  
MIL-STD-461F



## RADAR ALTIMETER

**Minimum Altitude**  
2.8 m

**Maximum Altitude**  
1500 m

**Altitude Accuracy**  
90 cm or %1  
(whichever is bigger)

**Maximum Platform Velocity**  
500 m/s

**Frequency**  
4.2 - 4.4 GHz

**Output Power**  
27 dBm

**Input Voltage**  
8-36 VDC

**Interface**  
RS 422/ 485/ 232  
(Ethernet Option)

**Update Rate**  
50 Hz

**Weight**  
160 g

**Dimensions (cm)**  
7 x 6.1 x 2

**Operating Temperature**  
-40 C to +71 C

**Environmental Conditions**  
MIL-STD-810G

**EMI / EMC**  
MIL-STD-461F

