

RDF Station

Technical data

Technical data	
TYPE	RDF STATION
No. of dosing modules	1 - 12
Volume of dosing module hopper (l)	20 - 200
Power supply (V/Hz)	3/N/PE 400 50/60
Cumulative dosing accuracy (%)	up to ±0.1 with digital L/C
Material throughput max. (l/h) - (for twelve modules)	8000
Material throughput min. (l/h)- (for twelve modules)	5
Max. ambient temperature (°C)	40
Weight of each dosing module	15 - 30
Options:	
Twin screw dosing module with built-in agitator	✓
Processing of liquid components	✓
Integrated refill system	✓
Material loaders/system for refilling	✓
High temperature version (180°C/356°F)	✓
Vibration damping	✓



Our advantages

DEFINITIVE INNOVATION

- High accuracy
- Easy cleaning
- Quick material change
- Easy reconfiguration

Contact Us :

-  Definitive Innovation
Via del Lavoro 16,
41030 Bastiglia (Mo) - Italy
-  info@definitiveinnovation.com
www.definitiveinnovation.com
-  +39 059 7470661

RDF STATION

Definitive Innovation RDF station is a up to twelve-component system for loss-in weight dosing of raw materials such as powders, pellets, fibres and liquids.

RDF Station

The RDF station is a compact and modular system that can be equipped with up to twelve dosing feeders and configured according to the most specific process needs, easily adaptable and suitable for every application from food, zootechnics or chemical to premixes and plastics.

It is suitable for both the dosing of micro and macro components, as each individual feeder can be configured to dose from 5 kg / h up to a maximum of 8000 kg/h. Through a continuous loss-in-weight monitoring of the flow the RDF station ensures a high and constant dosing accuracy.

A complete dosing system

The RDF station is a modular system than can be integrated with:

- Single screw feeders
- Twin screw feeders
- Vibrating Channel Feeders
- Liquid feeders

Our advantages

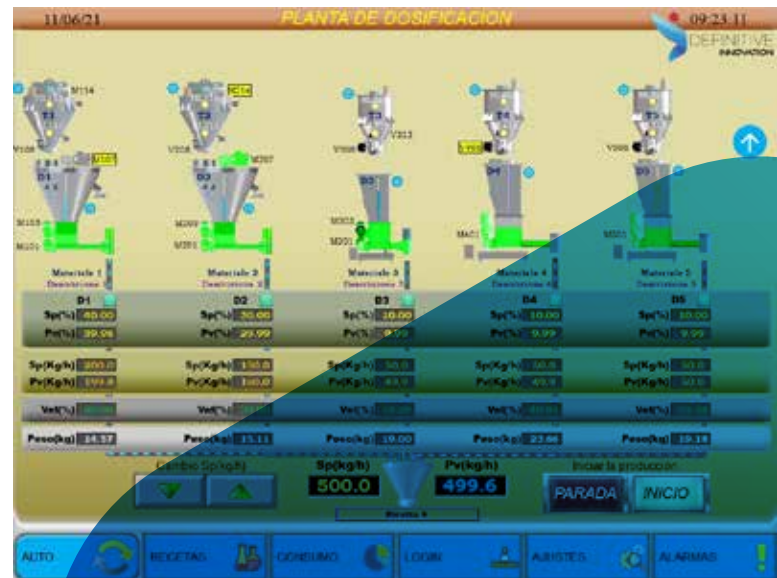
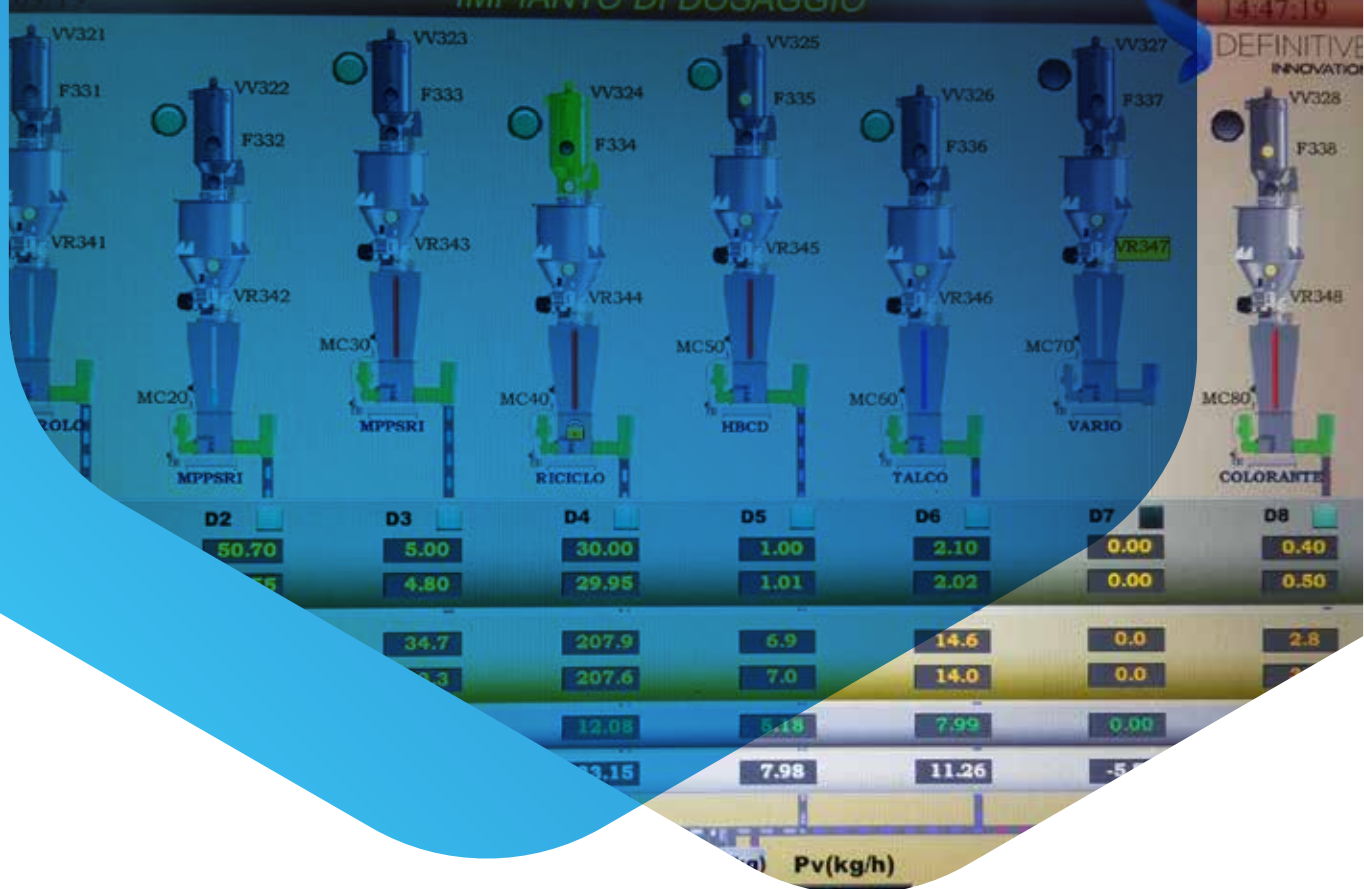
- High accuracy
- Easy cleaning
- Quick material change
- Easy reconfiguration



RDF Station is industry 4.0 ready

The gravimetric loss-in-weight system is PLC controlled with HMI graphic interface 15" touch screen. As Industry 4.0 is revolutionizing automation and data exchange in manufacturing technologies, RDF station is perfectly ready and its main features are:

- Receipe database
- Remote service
- Data exchange (Profinet Ethernet Modbus / TCP- interface)
- Calibration and database password protected
- Trend graphic
- Alarm list



Our system performance

- Material consumption each feeder/lot
- Feeder accuracy trend history with registrazione of Set – point (yellow), flow rate (green), speed (violet), weight (red)
- HMI main screen with constantly updated display
- Easy parameter setting and calibration