



## MIXING

### HORIZONTAL RIBBON AND BLADE MIXERS

MDN, MDL and MDV series are the most performing mixers, even for small product quantities. The extremely short mixing times and the flexibility to accommodate a complete set of accessories (such as liquid additives injectors, heat exchange cavities to cool or heat the blended compound) make them a reliable, durable and, above all, effective product in achieving a very high degree of homogenization.



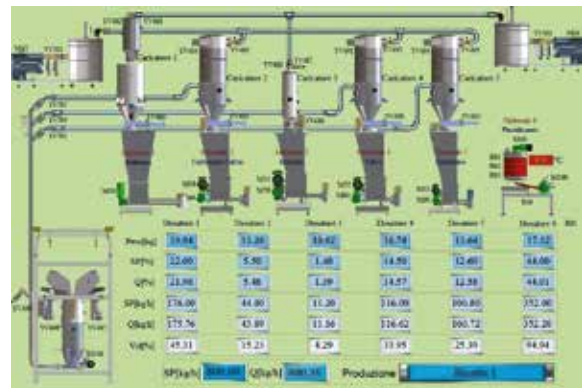
## AUTOMATION

### ELECTRICAL SYSTEMS, ELECTRICAL PANELS AND SOFTWARE

Definitive Innovation designs and manufactures complete electrical systems that make the plant flexible and expandable as required, to handle any kind of need.

Definitive Innovation is able to supply the most varied types of electrical panels related to industrial automation and distribution, whether they are related to single machines or complete plants. All electrical panels are subjected to a final check and test.

Definitive Innovation also provides the most advanced data-processing software in industrial environments, for industrial automation systems, for the control and the supervisory of the processes, information systems, and handling lines.



**DEFINITIVE INNOVATION s.r.l.**  
Via del Lavoro 16 - 41030 Bastiglia (Mo) - Italy  
Tel. +39 059 7470661 - Fax. +39 059 7470663  
[www.definitiveinnovation.com](http://www.definitiveinnovation.com)  
[info@definitiveinnovation.com](mailto:info@definitiveinnovation.com)



YOUR IDEAL PARTNER FOR ALL HANDLING SOLUTIONS

✓ **MACHINES**

✓ **SYSTEMS**

✓ **CONTROL**





# COMPANY

**DEFINITIVE INNOVATION** is the conception of a group of professionals with decades of world wide experience in the fields of dosing, mixing, conveying, and industrial automation.

**DEFINITIVE INNOVATION** designs high quality, efficient solutions for a wide range of industries from food or chemical to cement and plastics or any process reliant on handling technologies.

INDUSTRIAL AUTOMATION

STORAGE

DOSING

FILTRATION

MIXING

CONVEYING

APPLICATIONS



FOOD



ZOOTECHNICS



COSMETICS



CHEMICAL



PLASTICS



BUILDINGS

## DOSING

Our feeders are available both in volumetric and loss-in-weight release with electronic load cell system to ensure accuracy and reliability. They are used in the various configurations in all industrial sectors and they are available also in ATEX release.



### SINGLE SCREW FEEDER F SERIES

Designed for feeding powders, granules and synthetic fibers. They are suitable for processing materials with very different grain size, fluidity and density.



### DOUBLE SCREW FEEDERS D SERIES

Designed for feeding materials in powder and synthetic fibers, they are especially recommended for very fine powders. Equipped with twin extraction screw they ensure high precision and homogenous material flow.



### VIBRATING CHANNEL FEEDERS C SERIES

Designed for feeding raw materials with irregular sizes such as tablets, granules, flakes and stringy products. Thanks to their operating principle they feed every product without damaging it mechanically or affecting its exterior.

## STORAGE - EXTRACTION CONVEYING



### EMPTYING AND FILLING BIG BAG STATIONS

The EBG and RBB stations are the ideal devices for filling and emptying BIG-BAGs. Their ease of use and reliability ensure a high operational comfort and make them extremely versatile for handling systems.



### SINGLE-PHASE AND THREE-PHASE LOADERS

The CMP and CTP single-phase and three-phase loaders are adopted for receiving free flowing powders pneumatically (suction). They can operate individually, connected to a suction unit, or in sets composed of several loaders centrally connected to the same suction unit.

### TRANSPORT SCREWS AND BELT FEEDERS



The SC Series screws, simply and carefully constructed, easy to install, are the most reliable for transporting bulk materials in continuous.



The BC Series conveyor feeders are used to convey every type of material even with very irregular grain size. They can be customized for every continuous or heavy use. Available in open release or totally enclosed for maximum protection and environmental cleanliness.