

# RKL HOLDING, a.s.

A dynamic group of companies with over a century of tradition.





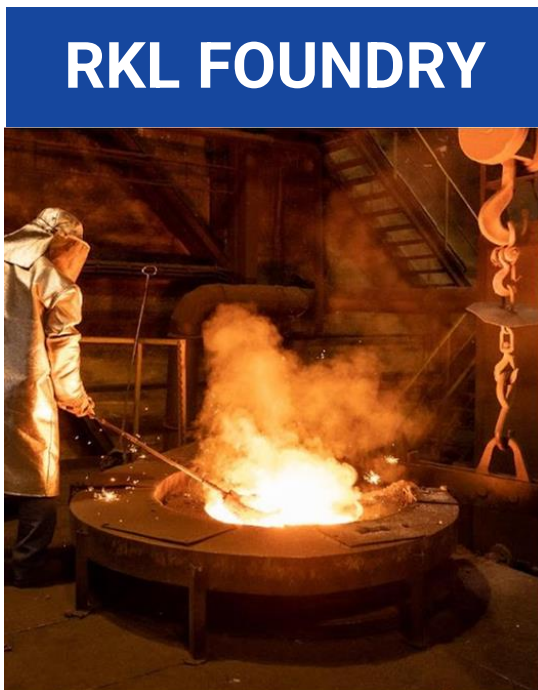
# RKL HOLDING, a.s.

A dynamic group of companies with over a century of tradition

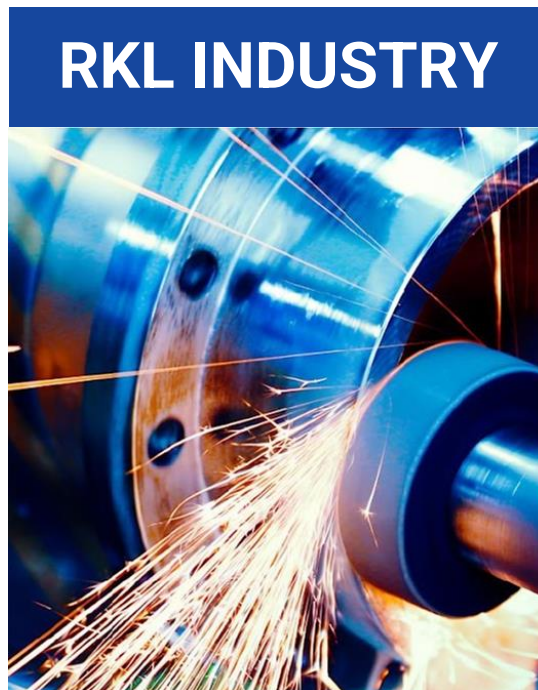
**RKL OPAVA**



**RKL FOUNDRY**



**RKL INDUSTRY**



**MSA**



start of production | **1890**

number of employees | **652**

turnover in mil. EUR | **73,6**



## Your Partner for Logistics and Warehousing

- More than **30 years of tradition**
- Transport, logistics, warehousing, and custom clearance, truck service
- Own fleet of **104 vehicles**
- Cooperation with over 150 subcontractors
- **Multimodal transport:**
  - Maritime, air, rail
- **Customs service**
- Parcel distribution
- Warehouses with controlled **temperature** and **humidity**, with a capacity of up to **75,000 PM**
- **Specialization in various segments, including demanding industries:**
  - **Pharmaceuticals, chemical industry, food industry**



number of employees | **285**

company establishment | **1993**

turnover in mil. EUR | **45**

**120 000** | shipments



## Foundry for Grey and Nodular Iron

- Acquired into the group in 2002
- **More than 110 years of tradition.**
- **Specialization:** Products for aluminum plants, engine gearboxes, compressors, stators, etc.
- **Modern technologies:**
  - **Robotic workstations** for casting grinding.
  - Continuous investments in modernization, robotics, and automation.

number of employees  
| **131**

start of production |  
**1910**

turnover in mil. EUR |  
**17,7**

**40+** |  
countries

**6 000 +** | tons of grey and nodular iron  
products





## Industrial Product Supplies

- **Wide range of industrial products:**
  - Sales of high-quality industrial coatings
  - Supply of pipeline system components compensating for pipe expansions, noise reduction, and vibration control
- **Tailor-made** solutions for industrial sectors.

establishment of the RKL division |  
**2017**

turnover in mil. EUR | **0,5**



## Vision and Goals

### Stable Czech Ownership

The group companies will remain in the hands of a Czech owner as a symbol of stability and trust.

### Quality and Reliability

We provide top-tier services in logistics and foundry operations while restoring the prestige of the MSA brand, particularly in the nuclear energy sector.

### Innovation and Growth

We invest in modernization, automation, and eco-friendly solutions for sustainable development.

### Partnership and Trust

We build long-term relationships with customers, suppliers, and employees.

### People Development

We support education and professional growth of our employees.

**The goal of RKL Holding Group is to be a major manufacturer and supplier to the industry while proudly upholding Czech industrial tradition.**



## Global Manufacturer of Industrial Valves

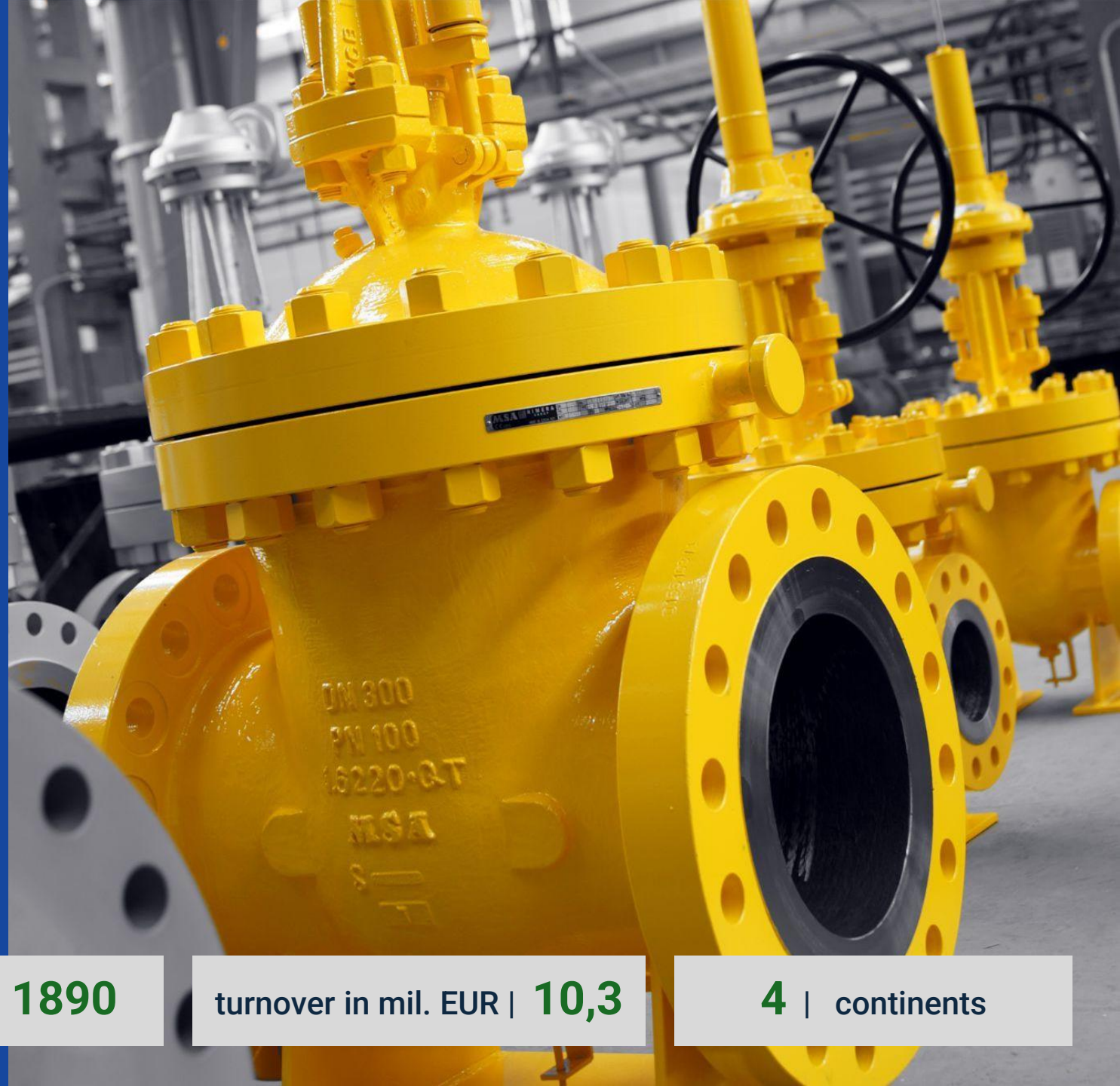
- More than **130 years of tradition**
- From design and production to service.
- Solutions for gas and petrochemical industries, special valves for nuclear and conventional energy, cryogenic valves
- **Certifications for global markets**
- **Durability in extreme conditions**
- **Czech quality and innovation**

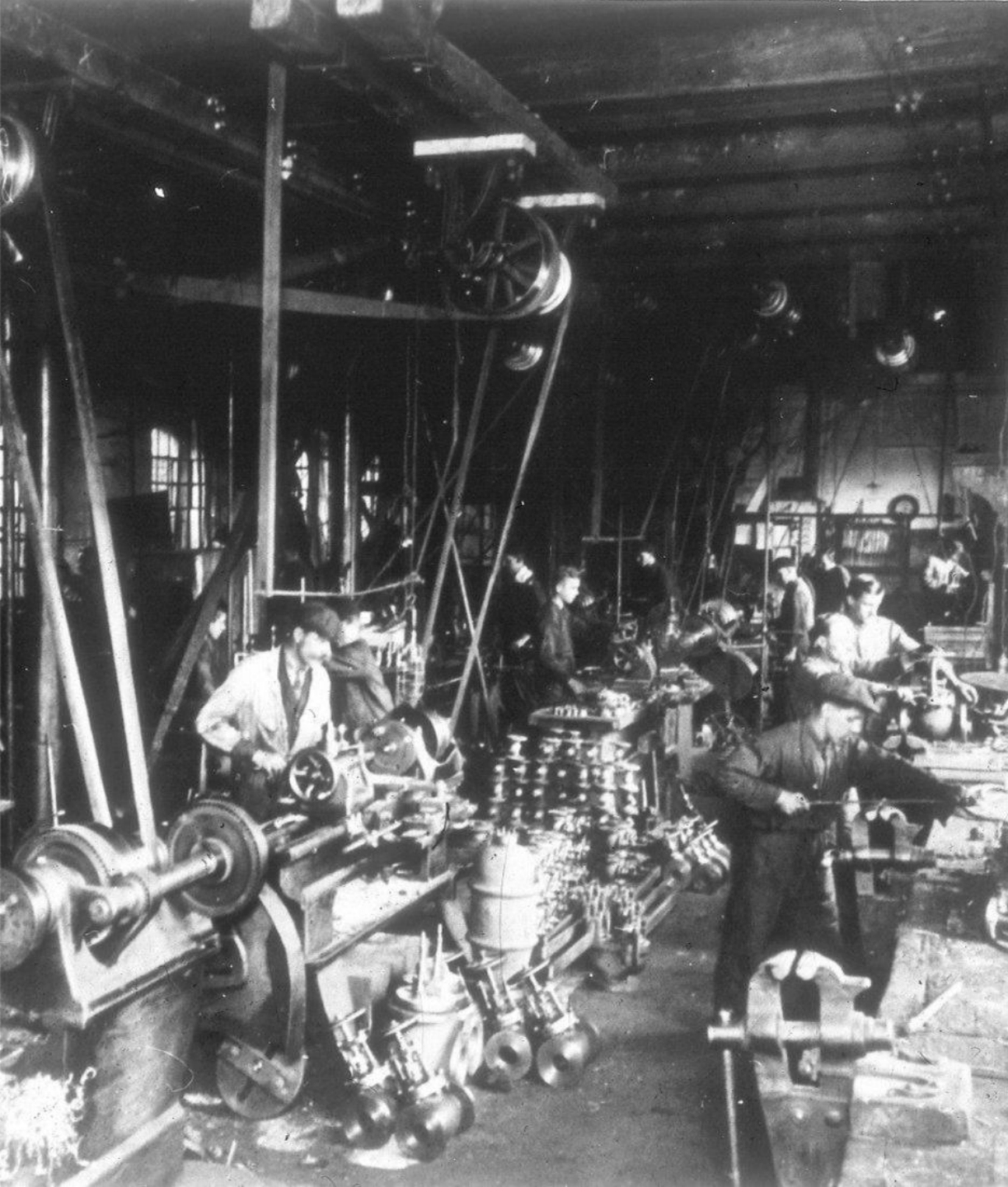
number of employees |  
**225**

start of production | **1890**

turnover in mil. EUR | **10,3**

**4** | continents





# Unique history

---

**1890**

The company establishment

**1950**

Start of industrial valves production

**1975**

Start of valves production for the nuclear power plants

**2012**

Start of valve production for renewable energy

**2015**

Extensive company reconstruction

**2024**

Member of RKL Holding





# Present

**Nuclear and Conventional Energy**

**Transport and Processing of  
Oil and Natural Gas**

**Cryogenic Applications**

**Water Supply**

**Chemical Industry**

**Engineering Industry**

Industrial valves are manufactured according to the standards ČSN, API, ANSI, ASME, EN, DIN, and GOST. Valves can be used in the following industries:





# Production Technology

Modern Equipment and the Latest Technologies

**new machining centers**

**welding automats**

**3D measuring station**

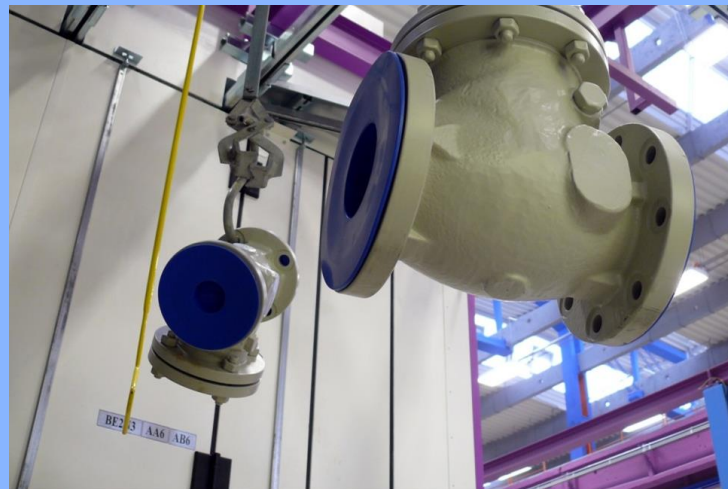


# Modern Paint Shop

coating in a **chamber or suspension system**

dimensions up to **W-3000, L-7000 mm**

drying oven temperature **up to 40°C**



# Service of Valves



**Comprehensive service solutions** throughout the entire planned lifecycle of valves



**Consulting** before planned shutdowns and repairs



# Testing

- Valve DN Range: 25-1400
- Testing Media:



water 0-70 MPa



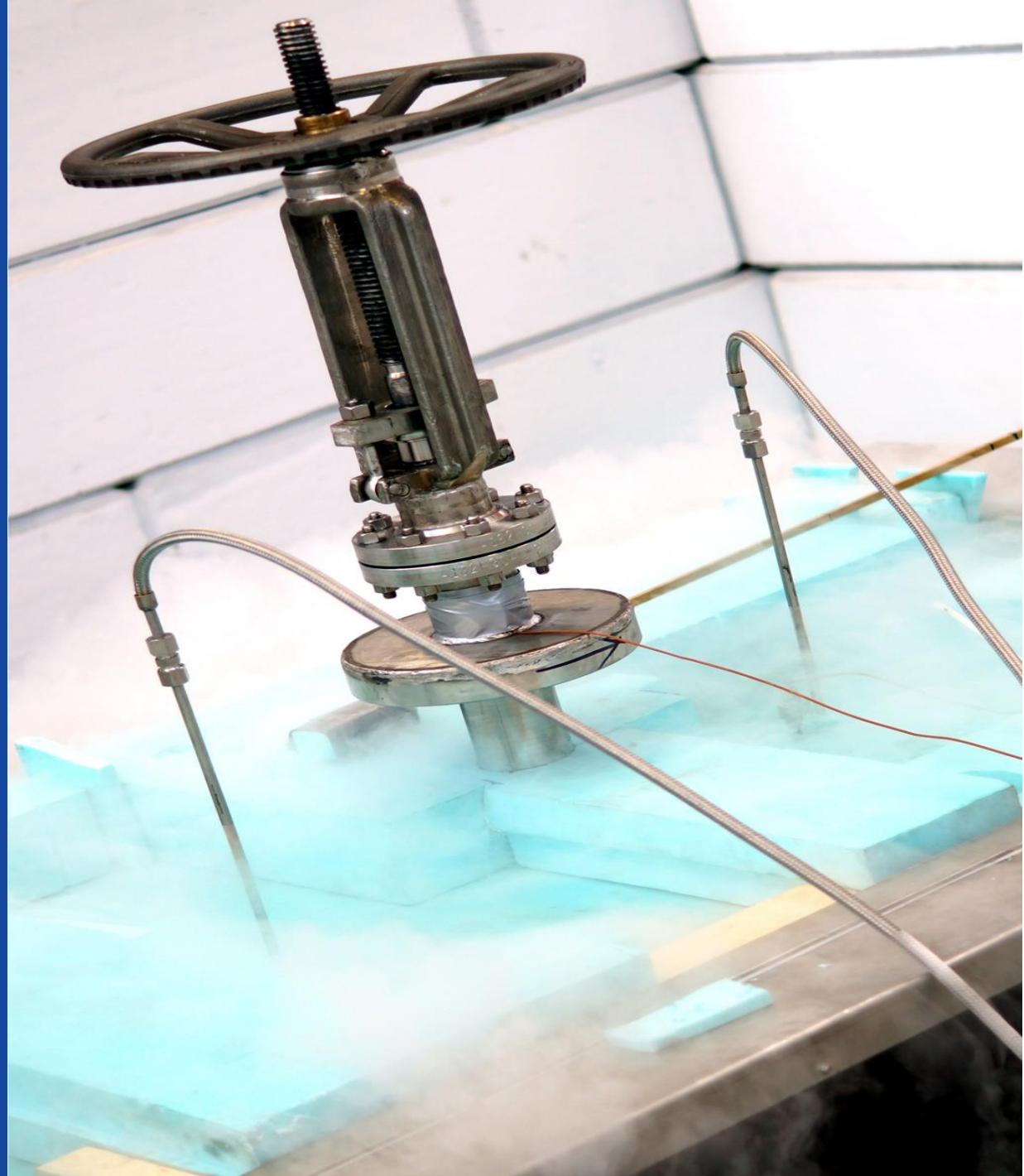
air 0-35 MPa

N

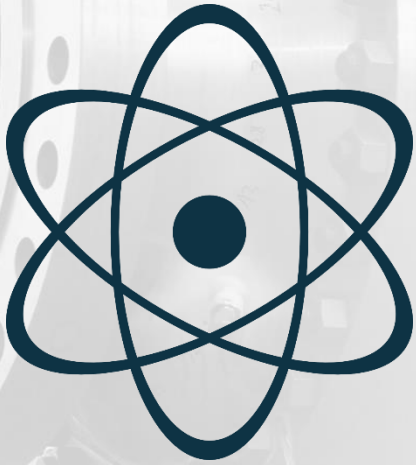
nitrogen 0-30 MPa

He

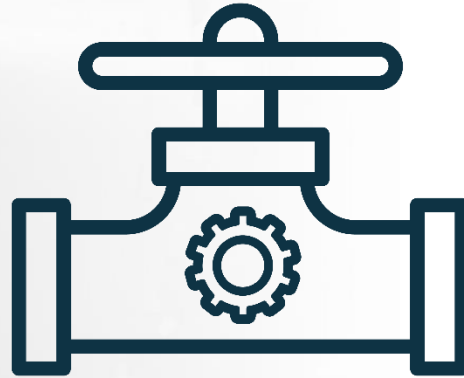
helium 0-30 MPa



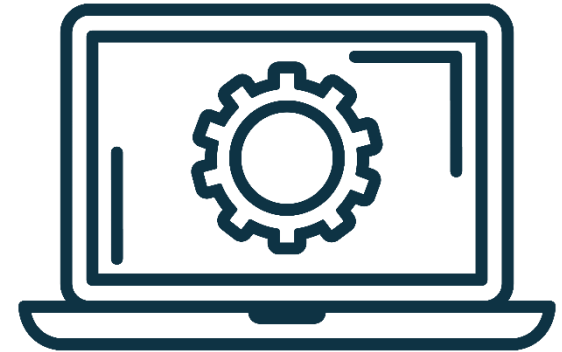
# Development and Design



department for nuclear  
valve development



valve design  
department



modern design  
programs



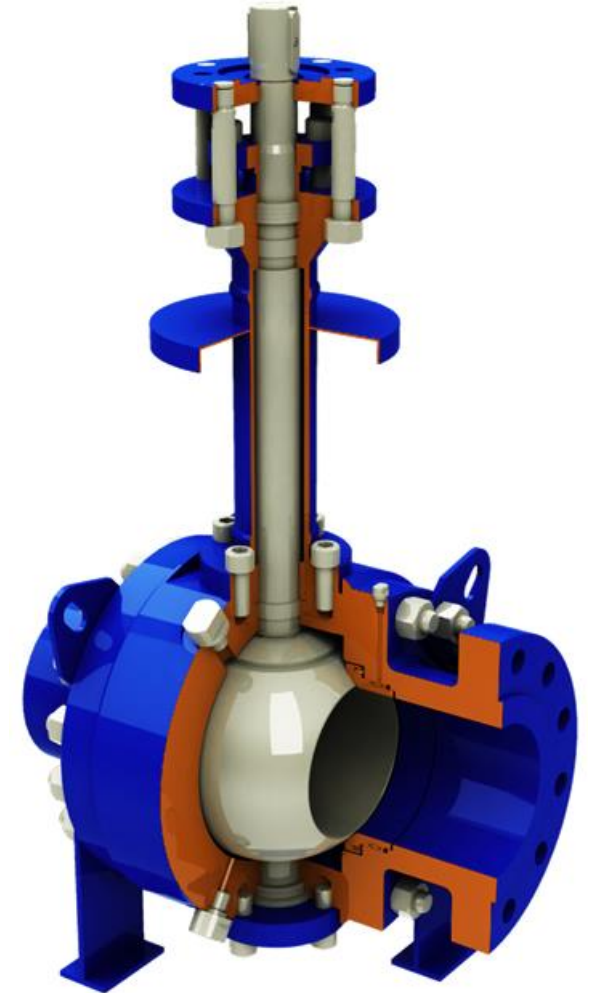
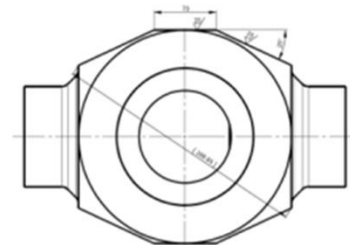
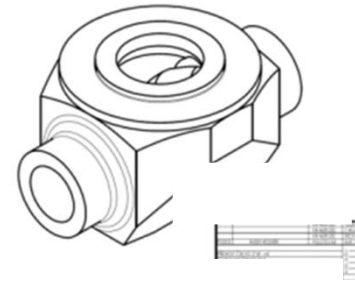
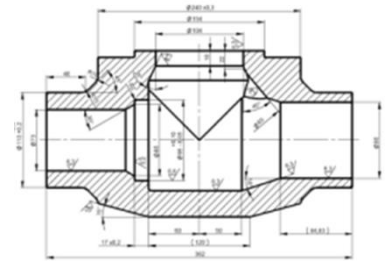
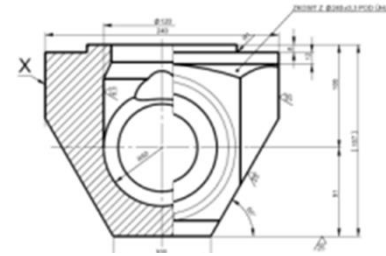
# Technical Support Design Programs

**SolidWorks 2D / 3D design documentation**

**SolidWorks Flow Simulation** hydraulic calculations

**MSC MARC** strength, vibration, and seismic resistance calculations on CNC centers

**EdgeCAM** machining on CNC centers



# Modernisation 2012-2015

**renovation of production facilities**

**new machining centres**

**3D measuring stations**

**welding automat**

**modern paint shop**

**new testing facilities**

**new testing facility of cryogenic valves**

**new portal stands for cranes**





# Production

**MSA**  
člen skupiny RKL HOLDING

**ball valves**

**gate valves**

**globe valves**

**swing check  
valves**

**valves for NPP**



# References

deliveries to more than 75 countries  
worldwide





# References

deliveries to more than 75 countries  
worldwide





*Thank you for  
your attention*



[www.msa.cz](http://www.msa.cz)