




Ascom Carbonate & Chemicals Manufacturing







**“ACCM IS A LEADER IN THE
PRODUCTION OF GROUND
CALCIUM CARBONATE
SINCE 2009.”**



ASCOM GROUP

A subsidiary of ASEC for mining, a pioneer in the Egyptian and the MENA market in the domain of geology and mining for over 25 years, ACCM is a leader in the production of ground calcium carbonate (GCC).

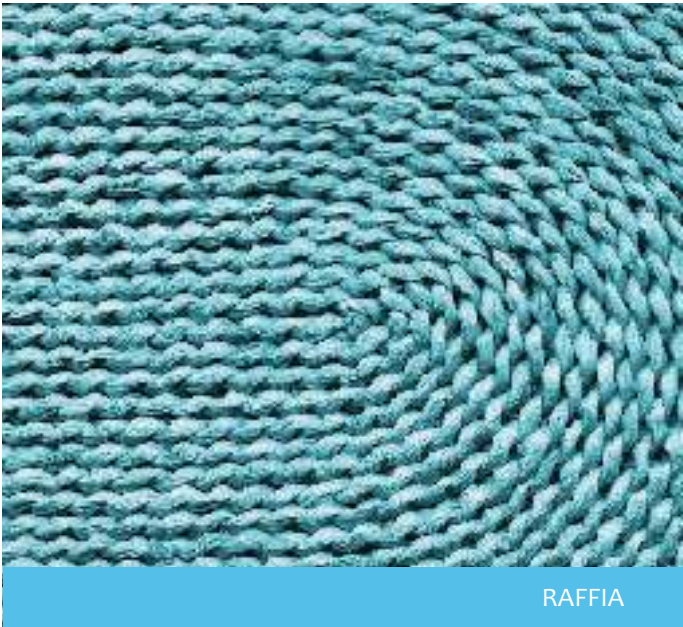
Since beginning production in 2009 ACCM has developed a reputation for market success and supplies different industries around the world.

Our Vision & Mission

We provide our clients with high value and cost-effective products, produced using the highest ethical, environmental, and safety standards. Regarded by many as the quality standard in the industry, our products are critical components for the paper, plastics, paints, coatings, and construction industries.



MASTER BATCH

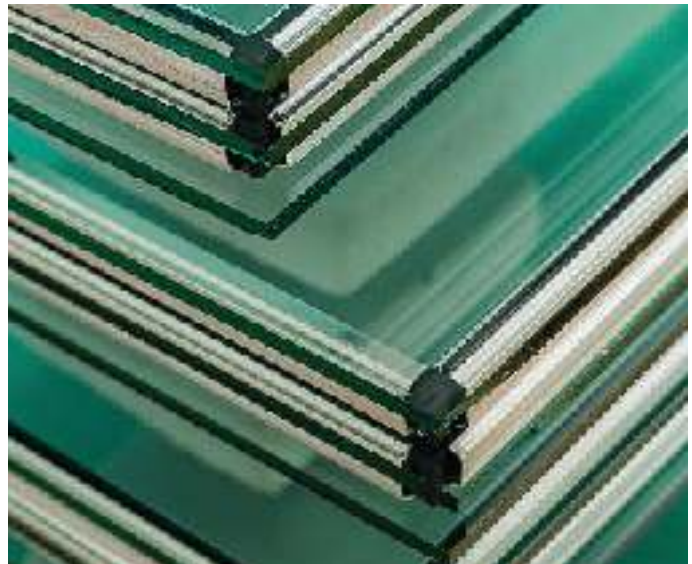


RAFFIA

“OUR AIM IS TO SUPPLY THE BEST QUALITY GCC PRODUCTS THAT WILL ENSURE AN INDISPENSABLE ADDED VALUE FOR OUR CUSTOMERS AND SHAREHOLDERS THROUGH OUR COMMITTED AND INNOVATIVE TEAM AND THE UTILIZATION OF OUR HIGH QUALITY MINERAL RESERVES.”



PAINTS



GLASS



PAPER



CONSTRUCTION

PRODUCTION, QUALITY & PASSION

As a company, we listen to our customers and understand their actual market needs today and in the future.

To ensure the highest level of quality, we employ state-of-the-art technologies such as Alpine Hosokawa in our milling plant. Our products, which range from lump form to superfine grades of $70\% < 2$ microns, are sold under the ACCM trademark and exported to all corners of the world. Our primary production line consists of an apron feeder, a primary crusher and two secondary crushers with a total capacity of more than 500 kilotons per year, and a vibrating screen. The crushed product is then stored in a 500-ton silo to await transportation to

our plant for further milling. We have carefully selected a team of dedicated and experienced geologists who have the passion to not only provide the best quality products possible, but also to actively monitor market trends that will help guide both our business and that of our customers into a brighter future.



“WE ARE CONSISTENTLY INVESTING IN RESEARCH AND IMPLEMENTING NEW MANUFACTURING METHODS TO ENHANCE BOTH OUR INTERNAL EFFICIENCY AND MAINTAIN OUR POSITION IN THE GLOBAL MARKET.”



Compliance standards

Compliance standards ACCM has met the requirements as described in ISO 9001 and currently holds an ISO 9001:2015 for Quality Management System (QMS). The ISO 9001:2015 is focused on meeting customer expectations and delivering customer satisfaction.

We are also registered and accredited from the SOCOTEC and the UKAS.

EGYPT: OUR HOME

Egypt's calcium carbonate is the best in the world.

The flagship of our operations and the key to our success lies in the Menya Region of Upper Egypt, home to one of the world's largest and highest quality limestone deposits with brightness levels of 97% and a CaCO_3 content of 99.2%. As a result of this invaluable resource base we are able to provide tailor-made products, such as exceptionally high-brightness materials, for our key global customers.



Hermopolis, Ashmunein - El Menya, Egypt



OUR SPECIFICATION

Characteristic	Value
CaCO ₃	99.18%
Fe ₂ O ₃	0.01%
MgO	0.05%
SiO ₂	0.09%
Al ₂ O ₃	0.04%
Density	2-7g / ml
Brightness	Min 98.5%
Whiteness	Min 99.3%
Hardness	3 Mohs

“MENYA REGION OF UPPER EGYPT,
HOME TO ONE OF THE WORLD’S
HIGHEST QUALITY LIMESTONE
DEPOSITS.”

OUR MARKETS & PARTNERS

As the future unfolds, ACCM seeks to explore new opportunities, develop its portfolio and reach out to new markets.



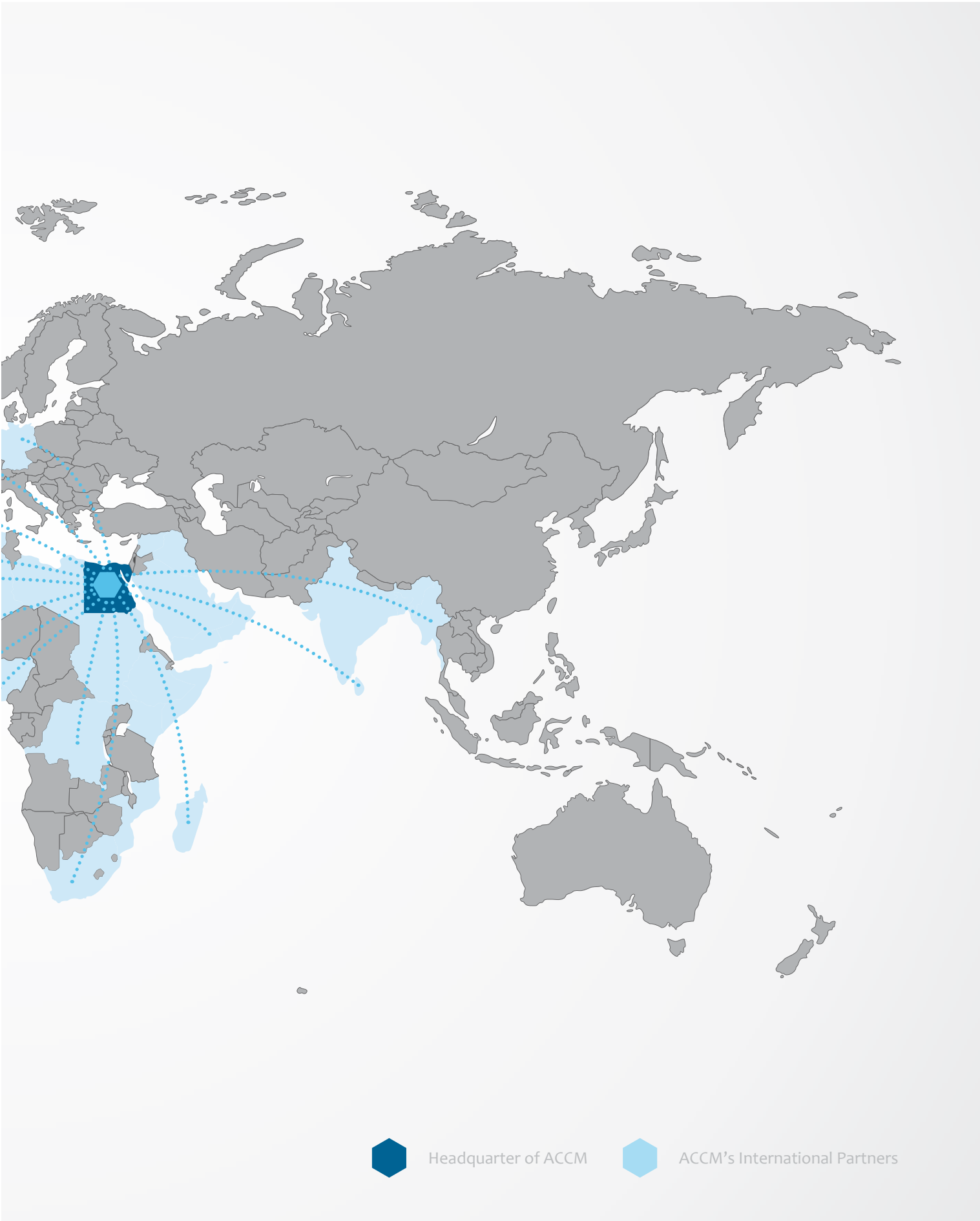
Additionally, in the past 10 years we have increased our market share in the export of calcium carbonate and our products are used in manufacturing across Asia, the Middle East and Africa region, all achieved in close coordination with our international partners. Our products are sold directly through our sales team or through our distributors network.



“ACCM HAS BEEN SELECTED BY THE WORLD’S LARGEST PRODUCERS OF PLASTICS AND PAINTS TO BE THEIR MAJOR SUPPLIER FOR HIGH QUALITY LIMESTONE IN THEIR PRODUCTION FACILITIES.”







SUSTAINABLE DEVELOPMENT

Health, Safety and Environment.



**“WE STRONGLY
BELIEVE THAT SAFETY
IS NOT JUST ABOUT THE
WORKPLACE BUT IS A
CRUCIAL PART OF THE
BASIC CULTURE OF THE
COMPANY.”**

A safe working environment for all of our people is our highest priority as a company. We are constantly and actively developing our HSE program to continue to improve in all areas, working with a number of external experts to help guide us to the latest and most effective safety training. We set challenging safety goals for all of our people and encourage the development of this culture at all levels within the company.

OUR PEOPLE

Our people are our greatest asset and we believe strongly in helping them achieve their full potential and actively contribute to develop their careers through training, development and ongoing support and coaching.



Our policy is to provide our people with the tools and skills that they need in order to excel in all that they do. By adopting this approach, ACCM can offer an exceptional level of service to customers thus achieving a mutual long term relationship and establishing our position as their number one supplier.



APPLICATIONS

PAINTS, COATINGS & ADHESIVES

*Filler for paints and coatings,
Road marking and traffic paint*

The pride of ACCM is in the paints industry, where our ultra fine, top grade Ground Calcium Carbonate is used as a filler due to its competitive pricing, ease of availability, and desired physical properties such as high brightness, weather resistance, low oil absorption and dispersibility. We provide the best grades in the global market. The high-brightness calcium carbonates are often chosen for ceiling paints and other areas requiring high dry hiding.

ACCM also offers a variety of calcium carbonate grades providing the different paints and coatings products with improved characteristics and enhancements for opacity, and gloss control.

Ground Calcium Carbonates are also found in road-markings and traffic paint, allowing governments and municipalities around the world to cut costs while still meeting the ideal optical specifications for the finished product.

GROUND CALCIUM CARBONATE IS USED AS A FILLER DUE TO ITS COMPETITIVE PRICING, EASE OF AVAILABILITY, AND DESIRED PHYSICAL PROPERTIES SUCH AS HIGH BRIGHTNESS, WEATHER RESISTANCE, LOW OIL ABSORPTION AND DISPERSIBILITY.





		Normal Ground Calcium Carbonate							
		Ascom 17	Ascom 20	Ascom 25	Ascom 30	Ascom 40	Ascom 50	Ascom 60	Ascom 70
Product Data	Top Cut (D97)	35	24	20	18	12	8	5	4
	Mean Particle Size (µm)	7	6	5	4.5	3	2.5	1.8	1.6
	Brightness	98.8	98.8	98.8	98.8	98.8	98.8	98.8	98.8
	Oil absorption (g/100g)	15	18	18.5	18.5	20	21	22	23
water - Based Architectural Paints	Gloss							Hexagon	Hexagon
	Semi - Gloss					Hexagon	Hexagon	Hexagon	
	Matt	Hexagon	Hexagon	Hexagon	Hexagon	Hexagon			
	Undercoates & Primers	Hexagon	Hexagon						
Oil - Based Architectural Paints	Gloss					Hexagon	Hexagon	Hexagon	
	Semi - Gloss					Hexagon	Hexagon	Hexagon	
	Matt	Hexagon	Hexagon	Hexagon	Hexagon	Hexagon	Hexagon		
	Undercoates & Primers	Hexagon	Hexagon	Hexagon	Hexagon	Hexagon	Hexagon		
Industrial Coating	Metal Primers	Hexagon	Hexagon	Hexagon	Hexagon	Hexagon	Hexagon		
	Powder Coating	Hexagon	Hexagon	Hexagon	Hexagon	Hexagon			
	Road Marking Paints	Hexagon	Hexagon			Hexagon			
Ink	Printing Inks						Hexagon	Hexagon	



01

Decorative Paints

Interior & Exterior Emulsion paints:

ASCOM 20
 ASCOM 25
 ASCOM 30
 ASCOM 40
 ASCOM 50
 ASCOM 60
 ASCOM 70
 ASCOM 80

Lacquer Paints:

ASCOM 30
 ASCOM 40
 ASCOM 50
 ASCOM 60
 ASCOM 70
 ASCOM 80

02

Industrial Coatings and Inks

The natural calcium carbonate is known for its low oil absorption, low abrasiveness and anti-corrosion properties which makes it an important ingredient in the domain of industrial coatings.



Top Coats:

ASCOM 20 ASCOM 40
 ASCOM 25 ASCOM 50
 ASCOM 30

Powder Coating:

ASCOM 20 ASCOM 40
 ASCOM 25 ASCOM 50
 ASCOM 30

Inks:

ASCOM 40
 ASCOM 50
 ASCOM 60
 ASCOM 70
 ASCOM 80

Enamels:

ASCOM 30
 ASCOM 40
 ASCOM 50

Road Markings:

ASCOM 20
 ASCOM 30

03

Adhesives and Sealants

Ground calcium carbonate is not only an economic filler but, is considered as a booster to some important characteristics such as mechanical properties and sagging resistance for the adhesives and sealants profile.

Powder Coating:

ASCOM 20 ASCOM 50

ASCOM 25 ASCOM 60

ASCOM 30 ASCOM 70

ASCOM 40 ASCOM 80



APPLICATIONS

PAPER*Fillers, Coating Pigments*

In paper coating applications, calcium carbonate is used to make a brighter sheet. For paper filling applications, calcium carbonate can improve the whiteness of the sheet and reduce costs by replacing expensive fiber and pigments. The chemical properties of calcium carbonate are used to produce non-acidic paper.

GROUND CALCIUM
CARBONATE IMPROVES
THE WHITENESS OF THE
SHEET AND REDUCES COSTS
BY REPLACING EXPENSIVE
FIBER AND PIGMENTS.





01

Fillers

Ground calcium carbonate is generally recognized for having the best potential as an economic filler-for-fiber substitution. Calcium carbonate also provides advantages in high strength, easier drainage and productivity.

ASCOM 60	ASCOM 80
ASCOM 70	

02

Coating Pigments

The technical and economic advantages of calcium carbonate as paper coating pigments achieve high brightness, low binder demand, better run-ability, excellent printability and desired gloss.

ASCOM 60	ASCOM 80
ASCOM 70	



APPLICATIONS

PLASTICS

Injection molding, blow molding and extrusion coating

Ground Calcium Carbonate, the main mineral found in limestone, marble, and chalk is also a popular additive in plastic manufacturing including injection molding, blow molding, and extrusion coating. It also allows polymers to heat and cool faster, resulting in higher productivity, output, and faster conversion for plastics producers.

In addition, the use of GCC in plastics production reduces energy use during the manufacturing process, therefore minimizing the carbon footprint and greenhouse gas impact of finished plastic products.

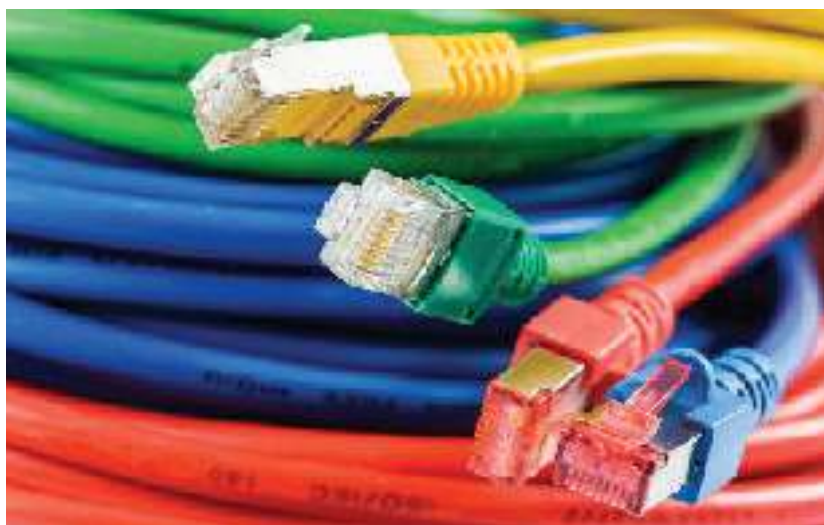
GROUND CALCIUM
CARBONATE IN PLASTICS
PRODUCTION REDUCES
ENERGY USE DURING THE
MANUFACTURING PROCESS,
THEREFORE MINIMIZING THE
CARBON FOOTPRINT AND
GREENHOUSE GAS IMPACT
OF FINISHED PLASTIC
PRODUCTS.





GROUND CALCIUM CARBONATE ALLOWS POLYMERS TO HEAT AND COOL FASTER, RESULTING IN HIGHER PRODUCTIVITY FOR PLASTIC PRODUCERS.

		Coated Ground Calcium Carbonate					
		Ascom 20T	Ascom 30T	Ascom 40T	Ascom 50T	Ascom 60T	Ascom 70T
Product Data	Top Cut (D97)	24	18	12	8	5	4
	Mean Particle Size (µm)	6	4.5	3	2.5	1.8	1.6
	Brightness	98.8	98.8	98.8	98.8	98.8	98.8
	Coating Level	0.8	0.9	1.1	1.2	1.3	1.4
PVC Compound	PVC Pipe & Fitting	✓	✓	✓			
	PVC Profile		✓	✓	✓		
	Cables				✓	✓	✓
	PVC Flooring			✓	✓		
Masterbatch	Plastic Molding			✓	✓		
	Plastic Film			✓	✓	✓	✓
	Plastic sheets			✓	✓		



01

Cables

Ground calcium carbonate (GCC), treated with stearic acid is a desired ingredient in PVC cable formulations due to its economic advantage and its characteristics that contribute to achieving the desired electrical, mechanical and thermal properties.

ASCOM 50T ASCOM 60T



02

Pipes & Fittings

ACCM products with fine particle size and stearate coating give good mechanical and optical properties with the required toughness and tensile strength for this application.

ASCOM 20T ASCOM 40T
ASCOM 30T ASCOM 50T



03

Master Batch

ASCOM 40T ASCOM 50T



04

Rubber Moldings & Extrusions

ACCM products with their exceptional whiteness, good dispersion and low oil absorption properties are an excellent filler for these applications.

ASCOM 30T ASCOM 50T
ASCOM 40T

APPLICATIONS

CONSTRUCTION

Self-compacting Concrete, Asphalt

In construction, GCC has two major applications in concrete and asphalt. For concrete, GCC promotes self-compacting properties, creating a product with better workability, increased strength and an improved appearance. When mixed with asphalt, it acts as a sand modifier to reduce the resistance of the mixture and provide a consistent material that is easier to work with.

GROUND CALCIUM CARBONATE PLAYS A MAJOR ROLE IN PRECAST CONCRETE INDUSTRY THANKS TO ITS SELF COMPACTING PROPERTIES.



GROUND CALCIUM CARBONATE IS A KEY COMPONENT IN ASPHALT APPLICATIONS, IT PROVIDES A CONSISTENT MATERIAL THAT IS EASIER TO WORK WITH.



01

Putties

Used as an extender to TiO₂ to increase volume and as cost effective filler, GCC is also used as filler for putties.

Filler for putties:

ASCOM 20

TiO₂ Extender:

ASCOM 40

ASCOM 70

ASCOM 50

ASCOM 80

ASCOM 60



APPLICATIONS

AGRICULTURE

Animal / Poultry Feed
Livestock Nutrition

GCC is an essential mineral for the growth, development, and production of livestock and domestic animals and plays an important role in maintaining health, particularly when more natural feed is not available. Therefore, farmers look to GCC as a calcium supplement for their animals, both for its high quality and cost effectiveness.

GROUND CALCIUM
CARBONATE PLAYS AN
IMPORTANT ROLE IN
MAINTAINING HEALTH
PARTICULARLY WHEN
MORE NATURAL
FEED IS NOT AVAILABLE.
FARMERS LOOK TO GCC AS
A CALCIUM SUPPLEMENT
FOR THEIR ANIMALS.



01

Animal Feed

These products are used for animal feeds and are also used in the alkaline treatment of soil.

ASCOM 3
ASCOM 5

ASCOM 6
ASCOM 10



APPLICATIONS

GLASS MANUFACTURING

Low-contaminant, economic glass manufacturing

The glass industry uses GCC often because it contains minimal levels of contaminants detrimental to the manufacturing process. In particular, it has a low level of iron (typically < 0.02%) along with a consistent level of magnesium (typically < 1%). The limestone produced by ACCM can therefore have both an attractive economic and environmental benefit to glass producers.

ASCOM 4
ASCOM 5

ASCOM 6

GROUND CALCIUM CARBONATE CONTAINS MINIMAL LEVELS OF CONTAMINANTS DETRIMENTAL TO THE MANUFACTURING PROCESS. THE LIMESTONE PRODUCED BY ASCOM CAN THEREFORE HAVE BOTH AN ATTRACTIVE ECONOMIC & ENVIRONMENTAL BENEFIT TO GLASS PRODUCERS.





01

Oil Additives

Calcium carbonate is an acid-soluble bridging and weighty agent for controlling fluid loss and density. It can be used in fluids ranging from conventional oil-base and water-base drilling fluids, to workover and completion fluids.

ASCOM 2

ASCOM 3

ASCOM 4

ASCOM 5

ASCOM 6

ASCOM 9

ASCOM 10

02

Ceramic

The usage of these products will increase the water absorption and help as a flux together with feldspar.

ASCOM 4
ASCOM 7

ASCOM 8
ASCOM 10



03

Foam & Latex

Calcium Carbonate is used as functional filler with other foaming additives to strengthen and prolong the life of carpet-backing.

ASCOM 10

04

Waterproofing

Calcium Carbonate is used as hydrophobic functional filler.

ASCOM 7
ASCOM 8

ASCOM 10



APPLICATIONS

ENVIRONMENTAL PROTECTION

Flue Gas Desulphurization (FGD)
De-acidifying Lakes, Rivers, and Soil

GCC is also used to help protect the environment, removing harmful emissions and pollutants from the air, such as SO₂ and NO₂ from the burning of coal and other fossil fuels in a process called flue gas desulphurization. Additionally, GCC is used in lakes and rivers to raise the pH level and de-acidify natural bodies of water, making it safer for wildlife and humans alike.

ASCOM 1
ASCOM 2

ASCOM 10

GROUND CALCIUM CARBONATE REMOVES HARMFUL EMISSIONS & POLLUTANTS FROM THE AIR, SUCH AS SO₂ AND NO₂ FROM THE BURNING OF COAL AND OTHER FOSSIL FUELS IN A PROCESS CALLED FLUE GAS DESULPHURIZATION.



GCC IS USED IN LAKES
AND RIVERS TO RAISE THE
PH LEVEL AND DE-ACIDIFY
NATURAL BODIES OF WATER.



		Ascom 1	Ascom 2	Ascom 3	Ascom 4	Ascom 5	Ascom 6	Ascom 7	Ascom 8	Ascom 9	Ascom 10
	100% Passing	6mm	4mm	3mm	2mm	1.5mm	-	60µm	60µm	500µm	250µm
Agriculture	Poultry Feed			●							
	Animal Feed		●	●							
	Animal Nutrition		●	●							
Construction	Self Compacting Concrete							●	●	●	
	Glazing									●	●
	Cement	●	●								
	Road Marking							●	●		
	Asphalt		●	●							
	Ceramic				●	●		●	●		
	Putty							●	●		
Glass	Colourless Glass				●	●					
	Bottle Glass				●	●					
Environmental	Flue-Gas Desulphurisation				●	●					
	De-Acidify Lakes, Rivers & Soil				●	●					





Factory:

First Cell - Third Sector - Industrial Zone
Al-Matahrah, Nile East, El Menya, Egypt

Administration :

48 El-Nasr street, New Maadi, Cairo, Egypt

P.O. Box: 120 New Maadi

Telephone: +202 25 19 02 54 / +202 25 17 79 81

Fax: +202 25 17 79 80

sales@accm.com.eg

procurement@accm.com.eg

www.accm.com.eg

