

Press 2024



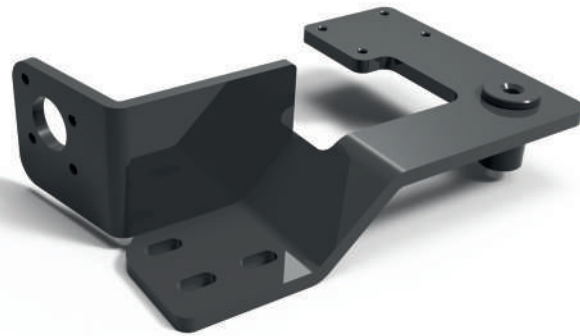
**SHEET METAL WORKS , WELDING
GROUP**

ercetinmak
.com.tr





SHEET METAL WORKS WELDING





ercetinmak
.com.tr



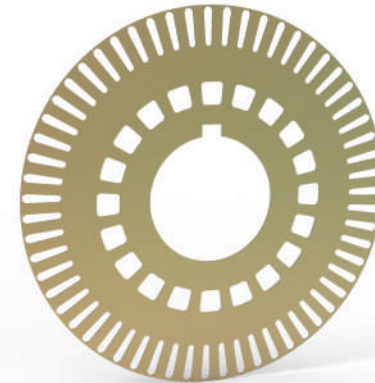
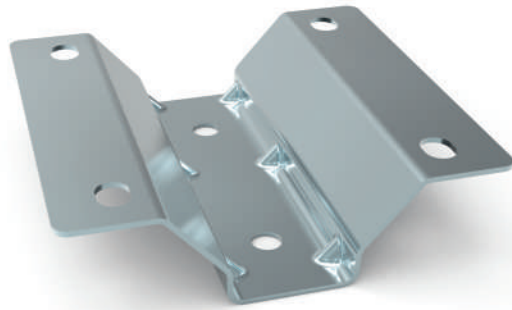


SHEET METAL WORKS WELDING





ercetinmak
.com.tr





ABOUT Us

Erçetin Makine was founded in 2008. Erçetin Makine has been producing sheet metal cutting molds since this date and started to produce brake spare parts and sheet metal parts of some vehicles in early 2009.

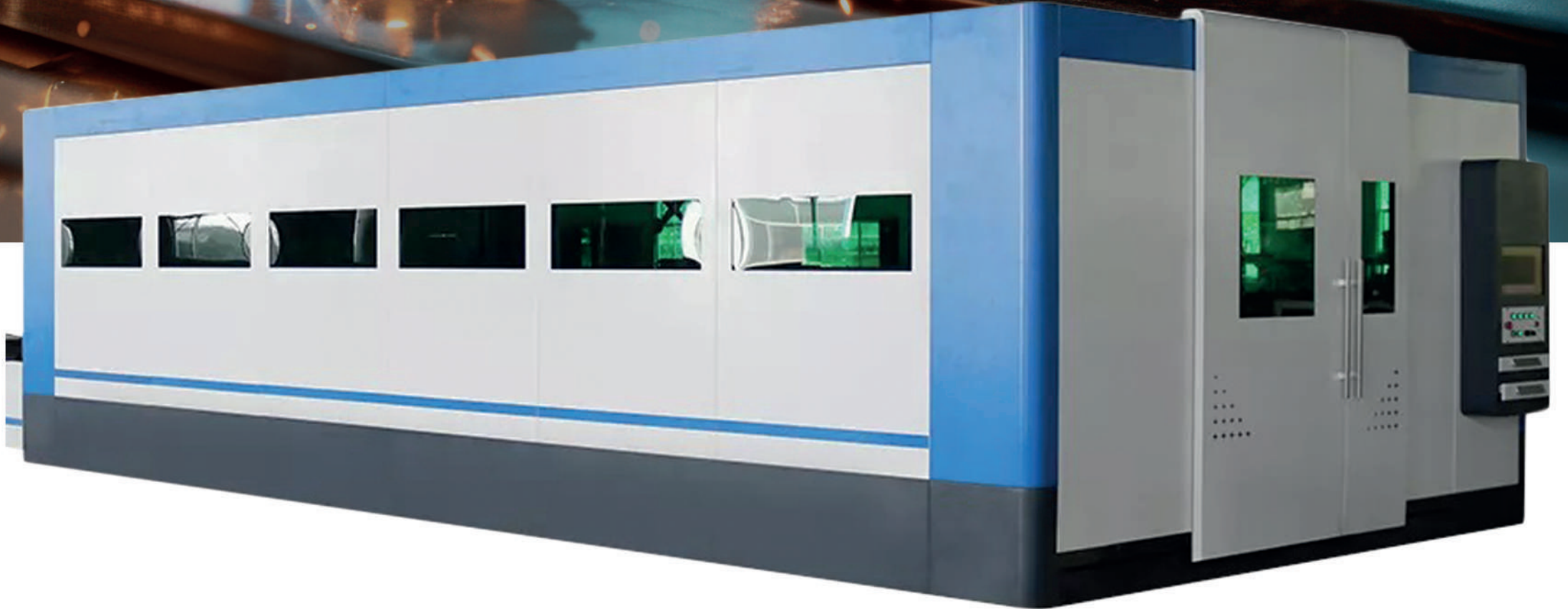
Erçetin Makine, which provides nearly 50 sheet metal and similar derivative products to the Tümosan tractor main assembly factory established in Konya, has rapidly increased its production capacity by continuing its development rapidly. Erçetin Makine, which was established in a closed area of 270 square meters, has increased its installed area to 1500 square meters in total production groups. It

continues its way rapidly to increase its product range especially in the field of sheet metal with the slogan of having experience, technology and similar production enhancing elements in its body, the only target is export.

Erçetin Makine, which aims to make special sheet metal products and molds that reduce high manufacturing workmanship, is moving towards being the solution partner of companies. Quality mold means quality product. Thanks to the material knowledge gained in molds, mold designs according to the need that do not drown in production costs are provided great convenience to companies in terms of overcoming the difficulty of first product costs.



ercetinmak
.com.tr





+90 332 346 11 07
+90 332 346 11 08
satis@ercetinmak.com.tr
Fevziçakmak, astim sanayi sitesi,
10753. Sk. 24/f, 42050
Karatay/Konya



All Right Reserved