





The Portuguese footwear brand **BEPPI** is owned by the Planitoi S.A. group, which was founded in 1992.

BEPPI footwear collections are suitable for the whole family, although the main focus is on children, from newborns to teenagers.

All seasonal collections are developed based on attractive design and the world's trends relating to maximum comfort, material quality and durability.

We always offer an accurate price to customers worldwide.

We invite you to visit our showroom, where we have permanent collections throughout the year with all footwear lines from casual sports, outdoor, indoor and beach.

Highlighting that stocks are available for immediate purchase and delivery.



RESPONSIBILITY

We are committed to quality, environmental protection and safety, ensuring that all our products are manufactured in accordance with EU regulations and standards.

NP EN ISO
9001:2015

QUALITY
MANAGEMENT SYSTEM

NP EN ISO
14001:2015

ENVIRONMENTAL
MANAGEMENT SYSTEM

NP ISO
45001:2019

OCCUPATIONAL HEALTH AND
SAFETY MANAGEMENT SYSTEM



GLOBAL ATTITUDE

Constantly evolving, we are focusing on and adapting to all needs and trends in the global market while also trying to adjust ourselves to the consumer's specific characteristics.

INNOVATION

Own research facility

Dedicated exclusively to product creation and development.

Partnerships

Working with the best partners worldwide, achieving the best price/quality/service ratio for our products.



PRODUCTS

Design

Up-to-date and in line with the market trends.

Research

We research the most innovative and exclusive materials.

Materials

The highest quality breathable linings and insoles, for maximum comfort.

Colors and sizes

The offer available in a variety of colors and sizes range meets our customers needs.



OUR LINES

We offer a range of products that focus primarily on quality, comfort, and relaxation for the whole family: babies, kids, teenagers, women and men.



ONLINE SHOP AND SOCIAL MEDIA

Find all the latest news on shoes in our online shop at:

WWW.BEPP.COM

Follow us on social media:





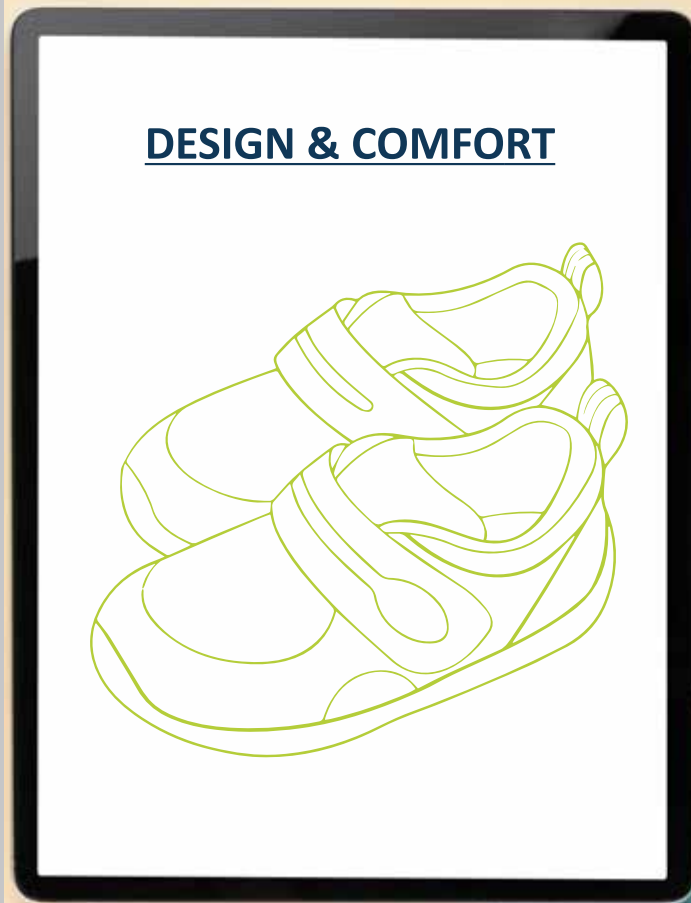
We care about the environment, using chemical-free materials.



All accessories are wear-resistant and chemical-free.



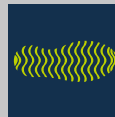
To ensure shoes durability, we use reinforced soles and toecaps.



Our footwear design uses zippers and velcro, to be easier to use.



BEPPI shoes insoles are anatomical, soft foam and refresh for maximum comfort.



BEPPI non-slip soles guarantee greater cushioning and anti-slip.



FOLLOW US



WWW.BEPPi.COM



Planitói – Importação e Exportação, S.A.

Rua 25 de Abril, n.º 164 – Zona Industrial do Roligo
4520-115 Espargo – Santa Maria da Feira - Portugal

Tel.: +351 256 337 500 | Fax: +351 256 372 733

info@planitoi@beppi.com.pt

COMPETE
2020

PORTUGAL
2020



UNIÃO EUROPEIA

Fundo Europeu
de Desenvolvimento Regional