

Citigraf Real-Time Crime Center

Providing situational intelligence to improve public safety

An effective public safety strategy involves proactively dealing with crime. Disorganized and siloed data inhibits collaboration across teams and slows down incident response times.

This is why organized and consolidated data is crucial for a proactive approach to policing. Genetec Citigraf™ is a real-time situational awareness support system that unifies data streams and operations across city departments. Citigraf disseminates timely information and provides greater situational awareness to law enforcement agencies.

Industry:
Public Safety

Offering:
Citigraf

Key benefits

Unified view of all your systems

Real-time situational intelligence

Federation across multiple sites

Post-incident investigation

Easy-to-plug-in digital evidence management system (DEMS)

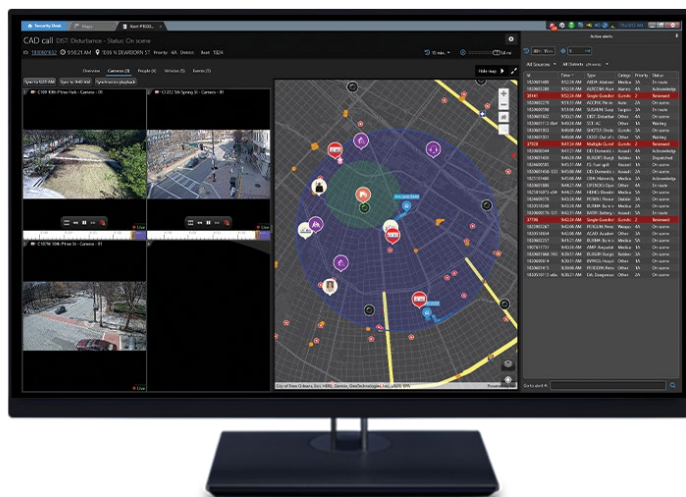
Receptive to third-party automatic license plate recognition systems

Continuous learning platform included

Ongoing engagement via a dedicated forum

Unify data from multiple sources





Citigraf functionalities

Advanced GIS & ESRI mapping

Citigraf supports vector-based maps (ESRI/ArcGIS, Google, Bing, PDF), PTZ control and field of view, and customizable entity states.

Real-time situational awareness & investigations

Gather context for first responders by correlating data from sensors, cameras, and other systems in one simple map-driven user interface.

Post-incident investigations

Use video playback in correlation with ALPR, video analytics, and other sensor data to quickly gather insights about past incidents.

Video analytics

Ingest video analytics from cameras, including forensic search. Run server-based video analytics with direction control, object detection, stopped vehicle detection, camera integrity, people counting, and privacy protection. Integrate with third-party video analytics, such as Briefcam.

Video management

Supported by our globally top-ranked video management system. Benefit from possible integration to thousands of camera models for video streaming and control, edge video analytics, and varied functionalities for both streaming and playback.

License plate recognition

Leverage rich data from your Genetec Sharp and third-party ALPR cameras to provide additional situational awareness.

System federation

Connect multiple Genetec systems on a single front-end and federate other ALPR systems for greater investigation capabilities.

Interfaces for all user types

Unlimited users can access Citigraf on desktop, mobile, and/or web client.

Community Connect™ integration

Integrate your Community Connect program by displaying the location of privately-owned cameras on your mapped interface, and the video streams of the cameras connected to your system.

Active directory (ADFS)

Allow single sign-on for user accounts across all Genetec platforms.

Integrations

AVL	Genetec AVL API (geolocation and metadata) NEMA & TAIP direct over UDP Geotab	CAD	Genetec CAD API implemented by · CentralSquare Enterprise · Versatem · Live911 Custom integration · CentralSquare OneSolution (coming soon) · Tyler Tech CAD (coming soon)
LPR	AutoVu Cloudrunner (coming soon) Genetec LPR API implemented by · Vaxtor · Axis Custom integration · Flock · Vigilant (coming soon)	Communications (Sipelia™)	Axis Commend Talk-a-phone Code Blue 2N Commend Zenitel
Bodyworn camera	Panasonic iPro Axis	Gunshot detection	ShotSpotter Shooter Detection System Halo
Gun detection	Omnilert ZeroEye	Video and access control	Check out our supported device list at https://www.genetec.com/supported-device-list