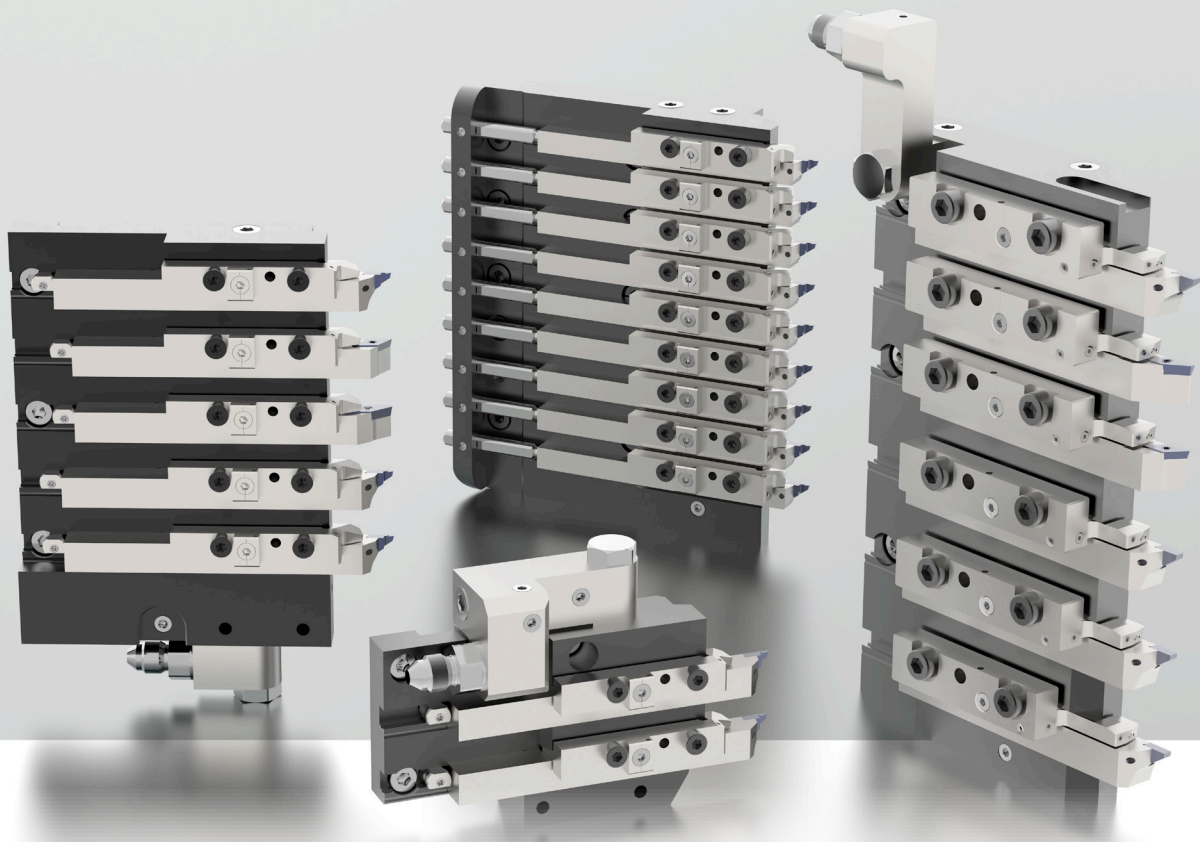




UTILIS
multidec[®]
swiss type tools

multidec[®]-LUB

**TOOL PLATES WITH INTEGRATED COOLANT SUPPLY
FOR MAXIMUM EFFICIENCY**



INNOVATION

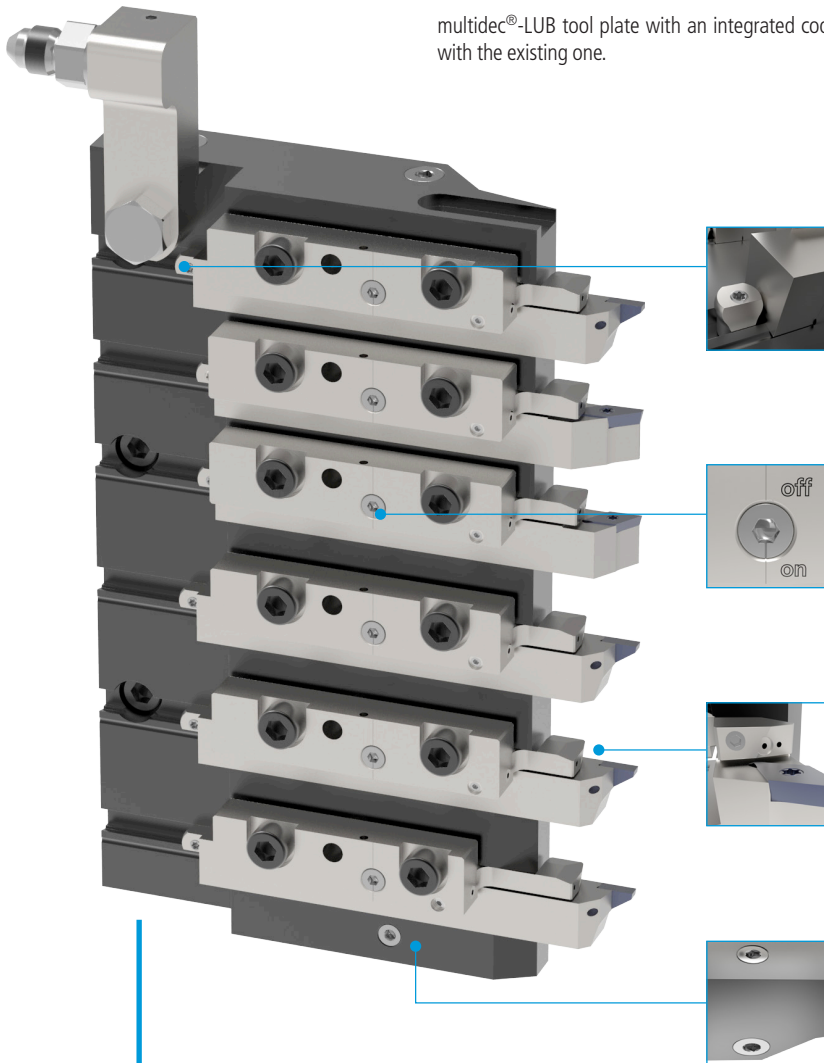
INCREASE THE PERFORMANCE OF YOUR MACHINE!

CITIZEN star TORNOS

future since 1915

UTILIS[®]
Tooling for High Technology

multidec®-LUB tool plate with an integrated coolant system, which can be quickly and easily replaced with the existing one.



Quick change system

Quick and exact tool change by means of adjustable stops in the tool plate.



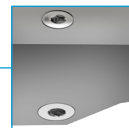
Flow controller at the clamping shim

Targeted regulation of the tool cooling with on/off function.



Two coolant outputs at the clamping shim

Reduced tool wear due to focussed cooling directly at the cutting edge. Thanks to the integrated coolant system, externally attached coolant connections are not required.



Coolant connections at the plate

A wide range of connecting options ensure that there is a direct connection to the coolant unit.



Advantages:

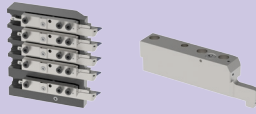
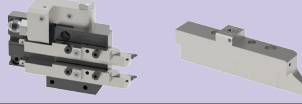
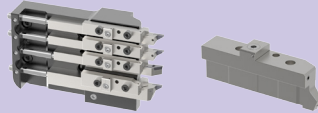
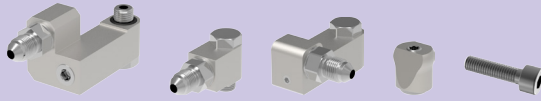
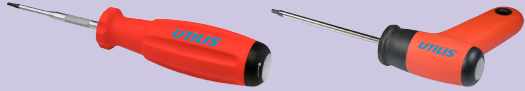
- Easy installation by replacing the original plate with the complete multidec®-LUB tool plate
- Increased process reliability
- Quick and safe replacement of the insert thanks to integrated stop
- Tool holders without internal cooling (IC) can continue to be used
- No more coolant distributors and tubes required

If you would like up to date information about the available tool plates and clamping shims, please visit our web site at www.utilis.com. You can view all items which have now been realised under "Lub actual standing list".



The latest information
about multidec®-LUB

Overview – multidec®-LUB

Legend		4
Designation system for tool plates		5
CITIZEN tool plates and clamping shims		6
STAR tool plates and clamping shims		10
TORNOS tool plates and clamping shims		14
Replacement and spare parts		20
Torque screwdriver		21
Tool plate inquiry		22

Different information about multidec® application refer to certain machining methods. In addition, simple symbols inform of the product assortment and where additional products and technical information can be found.

Dimensions

All dimensions are in millimeter (mm); native dimensions in inch are calculated into millimeter.

Page information

□ 12... See page 12 and the following (example)

Availability

- Standard articles
- Standard articles, new in this catalogue
- Discontinued articles

Execution of holder/insert

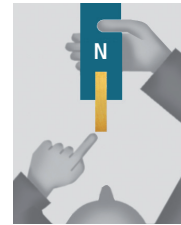
The side on which the insert is located determines whether it is a "left-" or "right-hand" holder. For this purpose, the holder is viewed with the insert pointing towards the observer.

Pictures

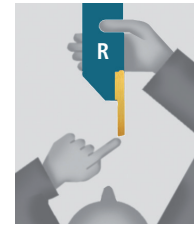
The right-hand version of the tools is usually shown. (Exceptions are possible). The tool colours illustrated here are not binding.



Left hand holder



Neutral holder

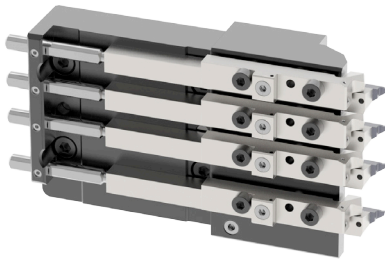
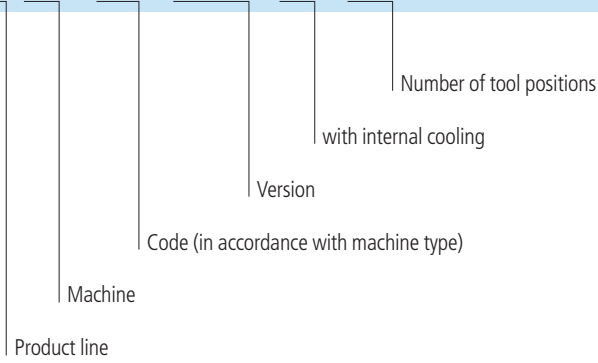


Right hand holder

The designation of a clamping wedge contains all of the important information, which is put together in accordance with the following system:

Tool plate

MLU ST - 01 - TPC - IC - 6T



Order designation

The selected product is ordered by entering the order designation.
Additional information about the products can be found in accordance with page reference (□ ...).

Order designation	
MLU TO-SN-TPC-IC-3T	■
MLU TO-SN-TPC-IC-4T	■
MLU TO-SN-TPC-IC-4T-4x8	■

Example: MLU TO-SN-TPC-IC-3T



With integrated adjustable coolant supply "TPC-IC"

For replacing original tool plates



MLU CI-03-TPC-IC-.. (CITIZEN L12)

Type of machine	Number of tool positions	Cut-off position holder	Holder for other tool positions	Number of cooling circuits	Order designation	5
L12	6	10×10	10×10	1	MLU CI-03-TPC-IC-6T	■
				2	MLU CI-03-TPC-IC-6T-2K	■

Scope of delivery: Tool plate, clamping shim with coolant control screw, tool stops, torque screwdriver and mounting screws

Note

Depending on the size of the tool plate, the lengths of the holders which can be used may be limited when using the tool stops if the recommended overhanging length "Lx" is to be maintained. Shorter holders and tool stops in various lengths are available as a standard solution.





With integrated adjustable coolant supply "TPC-IC"
 For replacing original tool plates

MLU CI-21-TPC-IC-... (CITIZEN L12 X)

Type of machine	Number of tool positions	Cut-off position holder	Holder for other tool positions	Number of cooling circuits	Order designation	5
L12 X	7	12×12	10×10	2	MLU CI-21-TPC-IC-7T-2K	■
				3	MLU CI-21-TPC-IC-7T-3K	■

Scope of delivery: Tool plate, clamping shim with coolant control screw, torque screwdriver and mounting screws

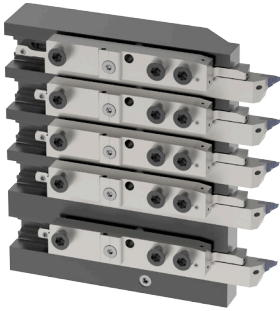
Note
 Tool plate without stop pins.



The latest information
 about multidec®-LUB

With integrated adjustable coolant supply "TPC-IC"

For replacing original tool plates



MLU CI-01-TPC-IC-.. (CITIZEN M16)

Type of machine	Number of tool positions	Cut-off position holder	Holder for other tool positions	Number of cooling circuits	Order designation	5
M16	5	10×10	10×10	1	MLU CI-01-TPC-IC-5T	■
				2	MLU CI-01-TPC-IC-5T-2K	■

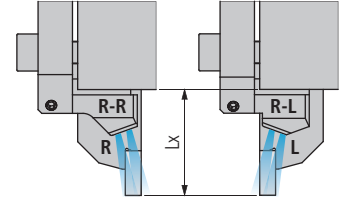
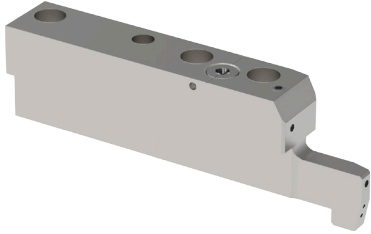
Scope of delivery: Tool plate, clamping shim with coolant control screw, tool stops, torque screwdriver and mounting screws

Note

Depending on the size of the tool plate, the lengths of the holders which can be used may be limited when using the tool stops if the recommended overhanging length "Lx" is to be maintained. Shorter holders and tool stops in various lengths are available as a standard solution.



For tool plates "TPC-IC" (replacement part)
 With integrated adjustable coolant supply "IC"



R-R: Clamping shim for right-hand holders "R"
R-L: Clamping shim for left-hand holders "L"

MLU 03 ... IC-F-.. (CITIZEN L12/L12 X/M16)

Tool plate type	Holder	Positions	Dimensions Lx*	Order designation			
				R		L	
L12-6T	10 × 10	T1 -T6	20	MLU 03 R-R IC-F-02	■	MLU 03 R-L IC-F-02	■
L12-6T-2K	10 × 10	T1 -T6	20	MLU 03 R-R IC-F-02	■	MLU 03 R-L IC-F-02	■
L12 X-7T-2K	10 × 10	T2 -T7	20	MLU 03 R-R IC-F-02	■	MLU 03 R-L IC-F-02	■
	12 × 12	T1 (cut off)		MLU 03 R-R IC-F-03	■	MLU 03 R-L IC-F-03	■
L12 X-7T-3K	10 × 10	T2 -T7	20	MLU 03 R-R IC-F-02	■	MLU 03 R-L IC-F-02	■
	12 × 12	T1 (cut off)		MLU 03 R-R IC-F-03	■	MLU 03 R-L IC-F-03	■
M16-5T	10 × 10	T1 -T5	20	MLU 03 R-R IC-F-01	■	MLU 03 R-L IC-F-01	■
M16-5T-2K	10 × 10	T1 -T5	20	MLU 03 R-R IC-F-01	■	MLU 03 R-L IC-F-01	■

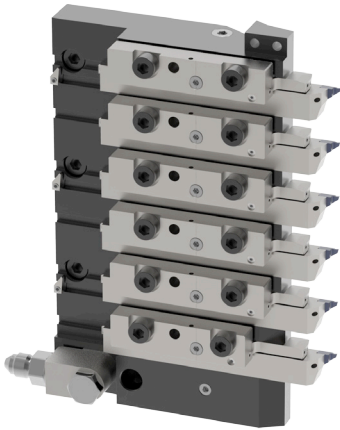
* Lx: Recommended overhanging length of the tool for optimum impacting of the coolant on the cutting edge.

Scope of delivery: Clamping shim with coolant regulating screw, without mounting screws
 Clamping shims for other holder overhanging lengths by request

Attention
 Tighten the multidec®-LUB clamping shim using the torque screwdriver according to the marking on the shim.



The latest information about multidec®-LUB



With integrated adjustable coolant supply "TPC-IC"
 For replacing original tool plates

MLU ST-03-TPC-IC-.. (STAR SB12 R G)

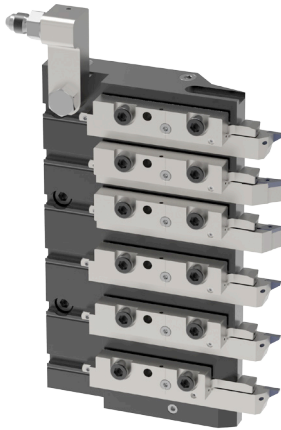
Type of machine	Number of tool positions	Cut-off position holder	Holder for other tool positions	Number of cooling circuits	Order designation	5
SB12 R G	6	12×12	12×12	1	MLU ST-03-TPC-IC-6T	■

Scope of delivery: Tool plate, clamping shim with coolant control screw, tool stops, torque screwdriver, angled connections and mounting screws

Note

Depending on the size of the tool plate, the lengths of the holders which can be used may be limited when using the tool stops if the recommended overhanging length "Lx" is to be maintained. Shorter holders and tool stops in various lengths are available as a standard solution.





With integrated adjustable coolant supply "TPC-IC"
 For replacing original tool plates

MLU ST-01-TPC-IC-.. (STAR SR20 J)

Type of machine	Number of tool positions	Cut-off position holder	Holder for other tool positions	Number of cooling circuits	Order designation	5
SR20 J	6	12×12	12×12	1	MLU ST-01-TPC-IC-6T	■

Scope of delivery: Tool plate, clamping shim with coolant control screw, tool stops, torque screwdriver, angled connections and mounting screws

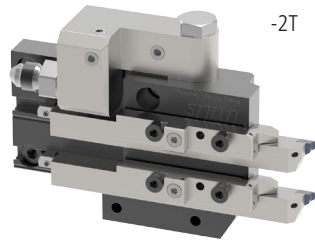
Note
 Depending on the size of the tool plate, the lengths of the holders which can be used may be limited when using the tool stops if the recommended overhanging length "Lx" is to be maintained. Shorter holders and tool stops in various lengths are available as a standard solution.



The latest information about multidec®-LUB



With integrated adjustable coolant supply "TPC-IC"
For replacing original tool plates



MLU ST-02-TPC-IC-.. (STAR SW12 RII)

Type of machine	Number of tool positions	Cut-off position holder	Holder for other tool positions	Number of cooling circuits	Order designation	5
SW12 RII	5	10×10	10×10	1	MLU ST-02-TPC-IC-5T	■
	2				MLU ST-02-TPC-IC-2T	■

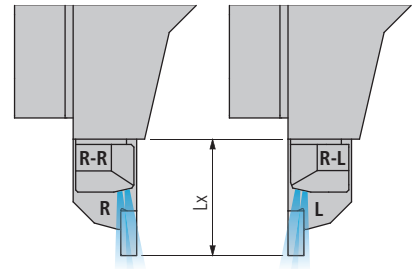
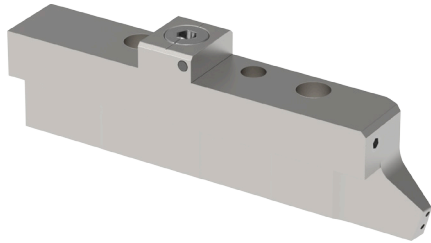
Scope of delivery: Tool plate, clamping shim with coolant control screw, tool stops, torque screwdriver, angled connections and mounting screws

Note

Depending on the size of the tool plate, the lengths of the holders which can be used may be limited when using the tool stops if the recommended overhanging length "Lx" is to be maintained. Shorter holders and tool stops in various lengths are available as a standard solution.



For tool plates "TPC-IC" (replacement part)
 With integrated adjustable coolant supply "IC"



R-R: Clamping shim for right-hand holders "R"
R-L: Clamping shim for left-hand holders "L"

MLU ... IC-F-.. (STAR)

Tool plate type	Holder	Positions	Dimensions Lx*	Order designation			
				R		L	
SB12 R G-6T	12×12	T2–T6	22	MLU 02 R-R IC-F-01	■	MLU 02 R-L IC-F-01	■
		T1 (cut-off)		MLU 02 R-R IC-F-02	■	MLU 02 R-L IC-F-02	■
SR20 J-6T	12×12	T2–T6	22	MLU 02 R-R IC-F-01	■	MLU 02 R-L IC-F-01	■
		T1 (cut-off)		MLU 02 R-R IC-F-02	■	MLU 02 R-L IC-F-02	■
SW12 RII-2T	10×10	T1–T2	20	MLU 01 R-R IC-F-05	■	MLU 01 R-L IC-F-05	■
SW12 RII-5T	10×10	T1–T5	20	MLU 01 R-R IC-F-05	■	MLU 01 R-L IC-F-05	■

* Lx: Recommended overhanging length of the tool for optimum impacting of the coolant on the cutting edge.

Scope of delivery: Clamping shim with coolant regulating screw, without mounting screws
 Clamping shims for other holder overhanging lengths by request

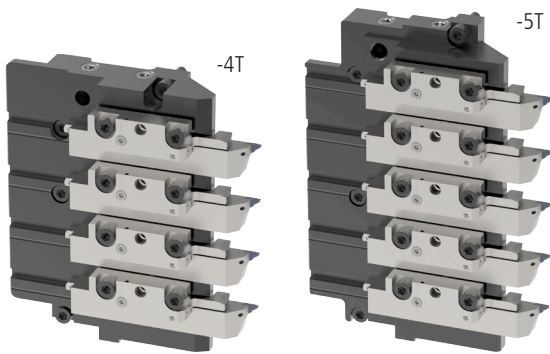
Attention
 Tighten the multidec®-LUB clamping shim using the torque screwdriver according to the marking on the shim.



The latest information about multidec®-LUB

With integrated adjustable coolant supply "TPC-IC"

For replacing original tool plates



MLU TO-01-TPC-IC... (TORNOS GT26)

Type of machine	Number of tool positions	Cut-off position holder	Holder for other tool positions	Number of cooling circuits	Order designation	5
GT26	4	16 × 16	16 × 16	1	MLU TO-01-TPC-IC-4T	■
	5				MLU TO-01-TPC-IC-5T	■

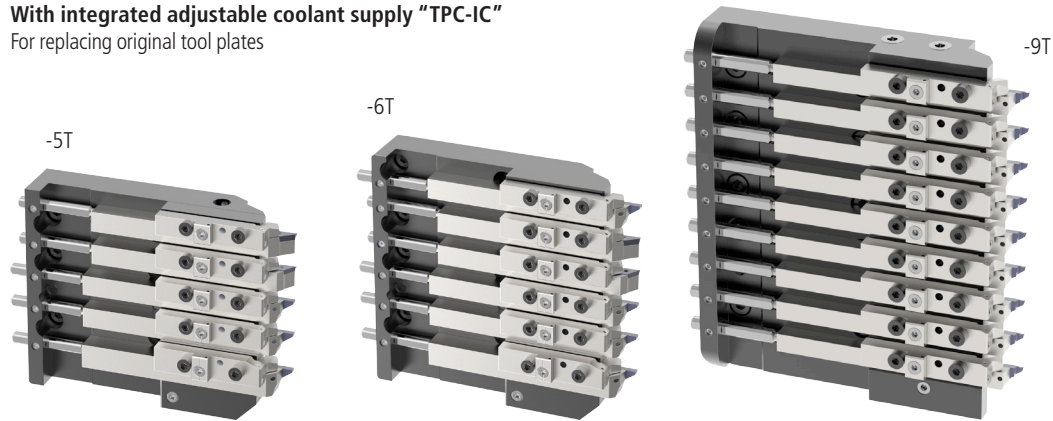
Scope of delivery: Tool plate, clamping shim with coolant control screw, tool stops, torque screwdriver and mounting screws

Note
 Depending on the size of the tool plate, the lengths of the holders which can be used may be limited when using the tool stops if the recommended overhanging length "Lx" is to be maintained. Shorter holders and tool stops in various lengths are available as a standard solution.



With integrated adjustable coolant supply "TPC-IC"

For replacing original tool plates



MLU TO-SN-TPC-IC-... (TORNOS SwissNano 7 (SN7))

Type of machine	Number of tool positions	Cut-off position holder	Holder for other tool positions	Number of cooling circuits	Order designation	5
SN7	5*	12×12	10×10	1	MLU TO-SN-TPC-IC-5T*	■
	6		8×8		MLU TO-SN-TPC-IC-6T	■
	9	—			MLU TO-SN-TPC-IC-9T-9x8	■

* Without the uppermost tool position in order to make space for a powered unit for lateral drilling tools and milling cutters.

Scope of delivery: Tool plate, clamping shim with coolant control screw, tool stops, torque screwdriver and mounting screws

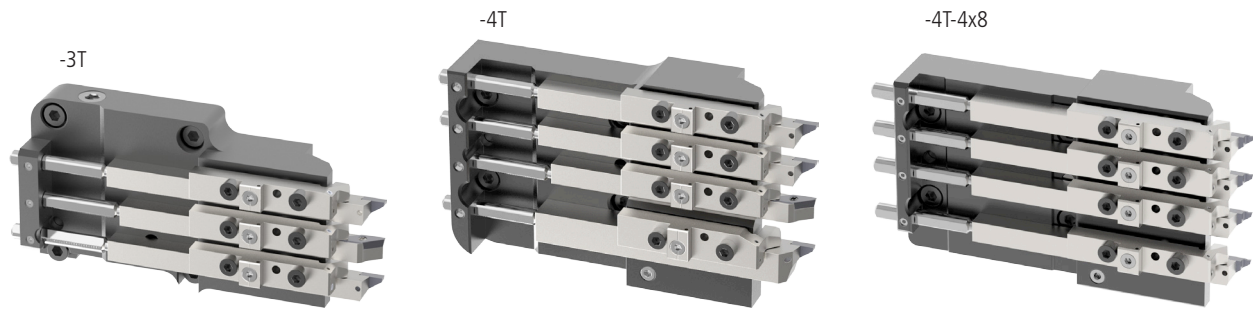
Note
 Depending on the size of the tool plate, the lengths of the holders which can be used may be limited when using the tool stops if the recommended overhanging length "Lx" is to be maintained. Shorter holders and tool stops in various lengths are available as a standard solution.



The latest information about multidec®-LUB

With integrated adjustable coolant supply "TPC-IC"

For replacing original tool plates



MLU TO-SN-TPC-IC-... (TORNOS SwissNano 4 (SN4))

Type of machine	Number of tool positions	Cut-off position holder	Holder for other tool positions	Number of cooling circuits	Order designation	5
SN4	3	8 × 8	8 × 8	1	MLU TO-SN-TPC-IC-3T	■
	4	12 × 12			MLU TO-SN-TPC-IC-4T	■
		—			MLU TO-SN-TPC-IC-4T-4x8	■

Scope of delivery: Tool plate, clamping shim with coolant control screw, tool stops, torque screwdriver and mounting screws

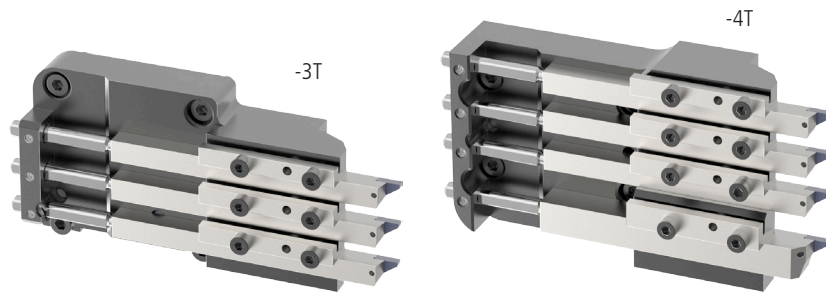
Note
 Depending on the size of the tool plate, the lengths of the holders which can be used may be limited when using the tool stops if the recommended overhanging length "Lx" is to be maintained. Shorter holders and tool stops in various lengths are available as a standard solution.



The latest information about multidec®-LUB

Without integrated coolant supply "TPC"

For replacing original tool plates



MLU TO-SN-TPC-.. (TORNOS SwissNano 4 (SN4))

Type of machine	Number of tool positions	Cut-off position holder	Holder for other tool positions	Number of cooling circuits	Order designation	5
SN4	3	8×8	8×8	1	MLU TO-SN-TPC-3T	■
	4	12×12			MLU TO-SN-TPC-4T	■

Scope of delivery: Tool plate, clamping shims without coolant control screw, tool stops, torque screwdriver and mounting screws

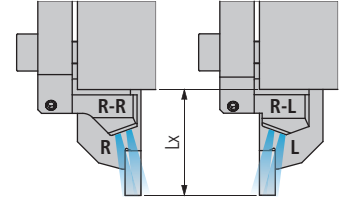
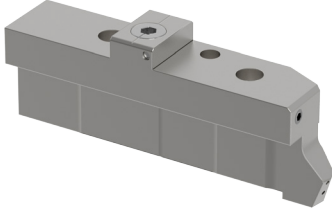
Note

Depending on the size of the tool plate, the lengths of the holders which can be used may be limited when using the tool stops if the recommended overhanging length "Lx" is to be maintained. Shorter holders and tool stops in various lengths are available as a standard solution.



The latest information about multidec®-LUB

For tool plates "TPC-IC" (replacement part)
With integrated adjustable coolant supply "IC"



R-R: Clamping shim for right-hand holders "R"
R-L: Clamping shim for left-hand holders "L"

MLU 01 ... IC-F... (TORNOS GT26/SwissNano 7 (SN7) & 4 (SN4))

Tool plate type	Holder	Positions	Dimensions Lx*	Order designation			
				R		L	
GT26-4T	16 × 16	T1 -T4	25	MLU 01 R-R IC-F-10	■	MLU 01 R-L IC-F-10	■
GT26-5T	16 × 16	T1 -T5	25	MLU 01 R-R IC-F-10	■	MLU 01 R-L IC-F-10	■
SN7-5T	10 × 10	T2 -T5	15	MLU 01 R-R IC-F-02	■	MLU 01 R-L IC-F-02	■
			20	MLU 01 R-R IC-F-05	■		
			25	MLU 01 R-R IC-F-08	■		
			30	MLU 01 R-R IC-F-09	■		
	12 × 12	T1 (cut-off)	15	MLU 01 R-R IC-F-01	■	MLU 01 R-L IC-F-01	■
			25	MLU 01 R-R IC-F-04	■		
SN7-6T	10 × 10	T2 -T6	15	MLU 01 R-R IC-F-02	■	MLU 01 R-L IC-F-02	■
			20	MLU 01 R-R IC-F-05	■		
			25	MLU 01 R-R IC-F-08	■		
			30	MLU 01 R-R IC-F-09	■		
	12 × 12	T1 (cut-off)	15	MLU 01 R-R IC-F-01	■	MLU 01 R-L IC-F-01	■
			25	MLU 01 R-R IC-F-04	■		
SN7-9T	8 × 8	T1 -T9	15	MLU 01 R-R IC-F-03	■		
SN4-3T	8 × 8	T1 -T3	15	MLU 01 R-R IC-F-03	■		
SN4-4T	8 × 8	T2 -T4	15	MLU 01 R-R IC-F-03	■		
	12 × 12	T1 (cut-off)		MLU 01 R-R IC-F-01	■	MLU 01 R-L IC-F-01	■
					25	MLU 01 R-R IC-F-04	■

* Lx: Recommended overhanging length of the tool for optimum impacting of the coolant on the cutting edge.

Scope of delivery: Clamping shim with coolant regulating screw, without mounting screws
Clamping shims for other holder overhanging lengths by request

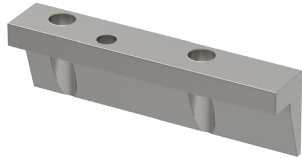
Attention
Tighten the multidec®-LUB clamping shim using the torque screwdriver according to the marking on the shim.



The latest information about multidec®-LUB

**For "TPC" tool plates (replacement part)
Without integrated coolant supply**

For replacing original clamping shims (if only the stop is being used)



MLU 01-SE-.. (TORNOS SwissNano 4 (SN4))

Tool plate type	Holder	Positions	Dimensions Lx	Order designation			
				MLU 01-SE-02	MLU 01-SE-02	MLU 01-SE-01	
SN4-3T	8x8	T1 -T4	–	MLU 01-SE-02	■		
SN4-4T	8x8	T2 -T4	–	MLU 01-SE-02	■		
	12x12	T1 (cut-off)		MLU 01-SE-01	■		

Scope of delivery: Clamping shim, without mounting screws
Clamping shims for other holder overhanging lengths by request

Attention

Tighten the multidec®-LUB clamping shim using the torque screwdriver according to the marking on the shim.



The latest information about multidec®-LUB

For tool plates, complete

Illustration	Description	Dimensions	Order designation	
	Angled connections	30 × 32 × 56	MLU WST G1/8 2 01 56	■
		16 × 18 × 28	MLU WST G1/8 1 01 28	■
		18 × 18 × 56.2	MLU WST G1/8 1 02 56	■
	Tool stop	5 × 5 × 5.5	MLU 00050 AN	■
		9 × 5 × 5.5	MLU 090L50 AN	■
		9 × 5 × 5.5	MLU 090R50 AN	■
		16 × 5 × 5.5	MLU 11550 AN	■
		22 × 5 × 5.5	MLU 17550 AN	■
		8 × 7 × 8	MLU 80085 AN	■
		16.5 × 7 × 8	MLU 98-01 AN-02	■
		24 × 7 × 8	MLU 98-01 AN-06	■
		6 × 40*	MLU 60400 AN	■
	Banjo bolt	SW14 × 30	MLU HS G 1/8x24.5 SW28	■
	Reduction union	SW14 × 29	MSP RVR G1/8-7/16-20 UNF	■
	Screw plug	M5 IB2.5	MSP VSR M5 IB2.5	■
		M8 × 1 IB4	MSP VSR M8x1 IB5	■
		G1/8" IB5	MSP VSR G 1/8" IB5	■
	Allen head screw	M4 × 20	MSP 40200 ZKS IB3	■
		M4 × 25	MSP 40250 ZKS IB3	■
		M5 × 12	MSP 50120 ZKS IB4	■
		M5 × 16	MSP 50160 ZKS IB4	■
		M5 × 20	MSP 50200 ZKS IB4	■
		M5 × 25	MSP 50250 ZKS IB4	■
		M5 × 30	MSP 50300 ZKS IB4	■
		M6 × 16	MSP 60160 ZKS IB5	■
		M6 × 20	MSP 60200 ZKS IB5	■
		M6 × 20	MSP 60200 ZKS IB5 INOX	■
		M6 × 25	MSP 60250 ZKS IB5	■
		M6 × 30	MSP 60300 ZKS IB5	■
			Clamping screw	M2 × 2
M2.5 × 2	MSP 25020 GST IB2			■
M2.5 × 3	MSP 25030 GST IB2			■
M3 × 3	MSP 30030 GST IB2			■
M4 × 3	MSP 40030 GST IB2			■

* Other lengths by request



MSP GHEX... D*

Order designation	Dimensions				Torque (Nm)	Handle
	TORX	TORX PLUS	Allen head			
MSP GHEX 2.9 D	■		M4		2.9	A
MSP GHEX 6.0 D	■		M5		6	B
MSP GHEX 10.0 D	■		M6		10	B

MSP KHEX... D

Order designation		Screw
MSP KHEX IB3 D	■	M4
MSP KHEX IB4 D	■	M5
MSP KHEX IB5 D	■	M6

* Preset with replaceable blade

Are you interested in "TPC" complete tool plates or clamping shims which are not yet available in our product line or a special version? If so, please send us an inquiry with the necessary information. We will then check your inquiry and send you a quote.



"TPC" complete tool plates

In order to construct a multidec®-LUB tool plate, we require:

- The CAD data of the original tool plate or provide us with the original tool plate for measuring

If you would like up to date information about the available tool plates and clamping shims, please visit our web site at www.utilis.com. You can view all items which have now been realised under "Lub actual standing list".



The latest information
about multidec®-LUB



■ **Utilis AG, Precision Tools**

Kreuzlingerstrasse 22, CH-8555 Müllheim, Switzerland
Phone +41 52 762 62 62, Fax +41 52 762 62 00
info@utilis.com, www.utilis.com