



DIGITECH

THE WELDING EDGE



DIGITECH are the most advanced and top performing multi-process pulse welding equipment of CEA, available in two series: **VP2** (Vision Pulse 2) and **VP3** (Vision Pulse 3).

Developed with the arc control software vision.ARC2, **DIGITECH** obtain incredible quality results with any material in all welding application.

DIGITECH are characterized by a digital interface with colour display and a synergic control to automatically determine the best welding parameters, based on the used type of material, the wire diameter and the gas.

Technologically ahead and easy-to-use, they offer premium welding quality at high speed in PULSED MIG, DUAL PULSED, MIG-MAG, MMA and TIG with "lift" arc striking.

DIGITECH are open to be connected to a LAN, allowing to interface the equipment to a robot and support software, making these equipment the best solution in any industrial field requiring high precision and repeatability of the achieved results and complying with all the demands of the 4.0 Industry.

DIGITECH 3200 VP2 is the compact version designed with a built-in feeder while DIGITECH 3300 VP2 comes with a separate wire feeder.

DIGITECH 4003 VP3 and **5003 VP3** use a separate wire feeder and are available with the new imposing design.

NEW



VISION.ARC2

vision.PULSE

dual.PULSE

DIGITECH 3200 VP2

DIGITECH 4003 VP3
DIGITECH 5003 VP3

- Top welding performance
- LCD Panel Interface
- Complete connectivity
- Special MIG and Pulse process possibility



DIGITECH FEATURES

- High tech multi-process equipment with exceptional performance in PULSED MIG, DUAL PULSED, MIG/MAG, MMA and TIG.
- Digital control of the welding parameters with preset synergic curves according to the type of material, gas and wire diameter being used
- Possibility of integrating special welding process: vision.MIG and vision.PULSED
- vision.ARC2 guarantees a constant arc in all conditions and the perfect droplet detachment, mostly in PULSED MIG and DUAL PULSED, to achieve superior welding performances
- User Interface with LCD colour display to keep under control the whole welding process
- Monitoring and repeatability of the welding parameters
- Excellent arc striking always precise and efficient
- Ability to partially or totally lock the equipment with access key by password
- Energy Saving" function to operate the power source cooling fan and torch water cooling when necessary
- Welding parameter adjustments directly from Up/Down MIG torch
- LAN connectivity to the network via Ethernet port or WIFI (Optional)
- Data storing and data printing ability (Optional)

WIRE FEEDER HT6 PRO DRIVE

PROFESSIONAL WIRE FEEDING mechanism with 4 rolls of large diameter for a precise and constant wire driving

DOUBLE GROOVE ROLLS replaceable without any tool

LODGING FOR WIRE SPOOLS up to Ø 300 mm

LED LIGHT in the feeder compartment (HT6 Pro Drive)

INSPECTION WINDOWS in the spool cover (HT6 Pro Drive)

HK1 Hanging Kit (HT6 Pro Drive - Optional)

GRADUATED KNOB to achieve the most correct value of the wire pressure cables from the power source to the feeder.

STRONG INDUSTRIAL CASE made to last



DOUBLE FEEDER

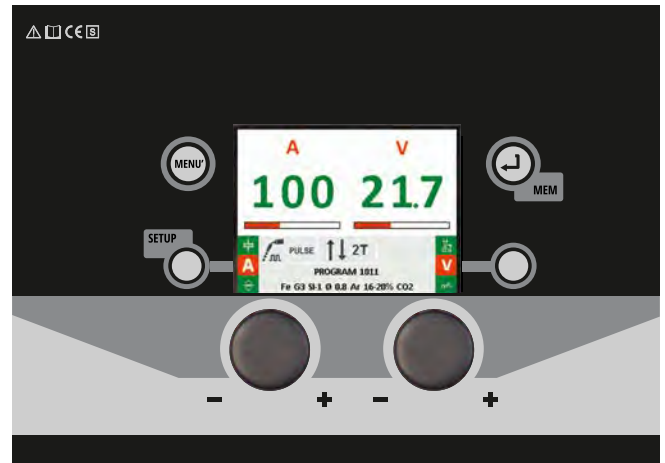
DIGITECH in the version with double wire feeder represents the ideal solution whenever a greater flexibility is needed in all applications using two different types of material, wire or gas.



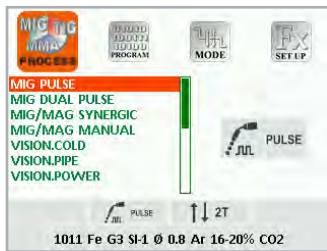
DIGITECH SYNERGIC CONTROL

DIGITECH control, fitted with the innovative colour display with icons and a clear infographic, allows even less expert welders to very easily adjust all the welding parameters in an intuitive way with extreme simplicity.

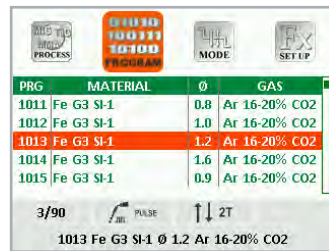
At the same time, DIGITECH power sources offer also most expert welders the possibility of fine tuning and customizing the welding process control, thanks to the ability to access clear, simple and complete under menus for the best possible configuration and optimization of the equipment.



PROCESS SELECTION



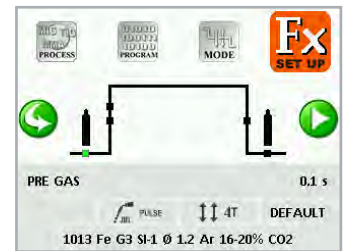
PROGRAM SELECTION



WELDING MODE



WELDING SET UP



WSC - Wire Start Control

This arc striking control device prevents any possible wire sticking to the workpiece or torch nozzle, by always ensuring a prompt and precise arc striking

SIMPLE AUTOMATION

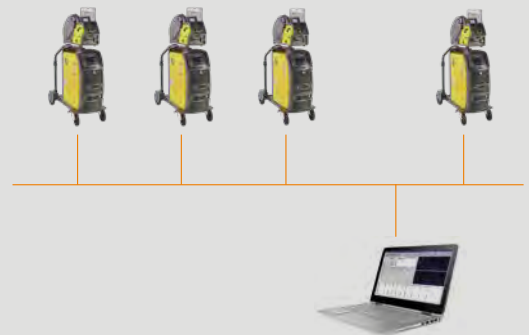
Standard equipped with analogic-digital I/O, DIGITECH can be easily integrated into automated welding equipment without any expensive and sophisticated external interfaces usually necessarily supplied for robotics.

ETHERNET LAN

Possibility of having a special version fitted with an external Ethernet socket to interface the equipment to a remote device and support software.

DIGITECH 4.0 READY

These units have the possibility to be connected to an industrial LAN through an Ethernet port or by a WiFi LAN (Optional), to satisfy all the requirement of 4.0 industry.



ROBOT INTERFACE

DIGITECH power sources can be connected to any Robot or Cobot by means of a CEA Robot Interface which can handle several analogic, fieldbus digital protocols depending on the features of the Robot to be used.

RI-A1



ANALOGIC/DIGITAL INTERFACE

RI-D



DIGITAL FIELD BUS INTERFACE



SPECIAL PROCESSES

vision.ARC2 is the software platform available on DIGITECH, which enables to weld with the following optional special processes:

MIG MAG



vision.COLD
To weld thin thickness laminations with low heat transfer



vision.ULTRASPEED
For high speed welding



vision.POWER
For a more concentrated arc and deeper penetration on medium and thick thickness



vision.PIPE
For a more accurate welding in pipe first root pass.

MIG PULSED



vision.PULSE-POWER
For a deeper and more flattened welding bead on medium large thickness



vision.PULSE-RUN
For a faster and colder pulse welding



vision.PULSE-UP
For a faster and more precise vertical up welding

ECP

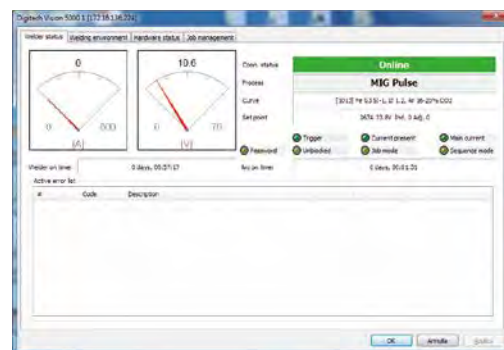


EXTRA CURVE PACKAGE
A complete set of welding curves for different materials

CQM CEA QUALITY MANAGER - CWM CEA WELDER MANAGER

CQM (CEA QUALITY MANAGER) is a software developed by CEA to enable welding data recording, monitoring, and printing by means of an external computer connected to one or more DIGITECH power sources.

CWM (CEA WELDER MANAGER) is a software developed by CEA designed to monitor the status of one or more DIGITECH power sources by connecting them via Ethernet (or Wi-Fi optional) to an external computer in the same network.



TECHNICAL DATA		DIGITECH VP2		DIGITECH VP3	
		3200	3300	4003	5003
Three Phase input 50/60 Hz	V +10% -10%	400	400	400	400
Input Power @ I ² Max	kVA	19	19,6	25,5	31,2
Delayed Fuse (I eff)	A	20	25	32	40
Power Factor / cos φ		0,66/0,99	0,65/0,99	0,65/0,99	0,69/0,99
Efficiency Degree		0,85	0,85	0,86	0,87
Open circuit voltage	V	62	62	70	70
Current range	A	10 - 320	10 - 330	10 - 400	10 - 500
Duty cycle at (40°C)	A 100 %	240	280	350	380
	A 60 %	270	300	400	460
	A X %	320 (40%)	330 (40%)	-	500 (50%)
Wires	Ø mm	0,6 - 1,6	0,6 - 1,6	0,6 - 1,6	0,6 - 1,6
Standards		EN 60974-1 • EN 60974-5 • EN 60974-10 <u>S</u>			
Protection Class	IP	23 S	23 S	23 S	23 S
Dimensions (L x W x H)	mm	660 x 290 x 515	660 x 290 x 515	710 x 290 x 530	710 x 290 x 530
Weight	Kg	41	35	41	45

DIGITECH 3200 VP2

ORDER INFORMATION

CODE	DESCRIPTION	DIGITECH VP2 3200	
		AIR	WATER
POWER SOURCES			
004700	Power Source DIGITECH 3200 VP2 400 V (4 rolls for wire Ø 0,8÷1,0 mm)	●	≈
SPECIAL VERSION - POWER SOURCE FITTED WITH SOFTWARE			
004700PR	Power Source DIGITECH 3200 VP2 (PREMIUM) 400 V with vision.FULL PACKAGE and Ethernet socket		
ALUMINIUM KIT			
030895	Aluminium Kit of double grooved TWIN rolls (Ø 0.8÷1.0) and gears kit for Al wires		
030897	Aluminium Kit of double grooved TWIN rolls (Ø 1.0÷1.2) and gears kit for Al wires		
SOFTWARE FOR SPECIAL MIG/MAG PROCESS			
050002	SM1 - SPECIAL MIG Process Package including: vision.COLD, vision.POWER, vision.ULTRASPEED, vision.PIPE and ECP - Extra Curves Package		
050003	SP2 - PERFORMANCE Process Package including: vision.PULSE-UP, vision.PULSE-RUN, vision.ULTRASPEED and ECP - Extra Curves Package		
050004	SFP - vision.FULL-PACKAGE complete package with Special MIG Process Package (SM1) and Special PULSE Process: vision.PULSE-UP, vision.PULSE-RUN and vision.PULSE-POWER with extra curves ECP		
050050	ECP - Extra Curves Package to meet special application		
EN 1090 WPQR - WPS			
Collection of WPQR - WPS for DIGITECH			
MIG MAG WELDING TORCHES			
020466	CEA Torch CX 353/4 4 m wire Ø 0.8÷1.2 C02 340A @60% / Mix 290A @60%	●	/
020472	CEA Torch CXH 302/4 4 m wire Ø 0.8÷1.2 water cooled C02 300A @100% / Mix 250A @100%	/	≈
020488	Push Pull Torch PP 401 D 8 m 24 V -wire Ø 0,8÷1,2 water cooled (to be ordered w. 031107)		
031107	Push Pull Synchronizer PC Board KIT for QF4 and HT5 (to be ordered with the Push pull torch)		
For other torches see mig/mag torches			
TIG TORCHES WITH BUILT-IN GAS VALVE FOR TOUCH-START TECHNIQUE			
020568	Torch RTX 26.4 4 m - 180 A 35%		
WATER COOLING			
032098	Water cooling equipment HR 32 400 V	/	≈
402275A	Cea CL-1100 cooling liquid - 5 l Tank	/	≈
TROLLEYS			
234914	Trolley CT 70 with 4 rolls for power source, cooling equipment and cylinder (and autotransformer)	●	≈
234928	Trolley CT 75 with 4 rolls for power source, cooling equipment and cylinder (and autotransformer)		
GROUND CABLES			
239603	50 mm ² / 4 m Ground cable with clamp	●	≈
GAS REDUCERS			
020916	Reducer with flowmeter and 1 manometer	●	≈
OTHER OPTION[S]			
236590	Metallic spool adaptor		
236234	RC 178 remote control with 5 m cable		
020340	Autotransformer A 13-H 220/400 V 50/60 Hz 3 Phase		
460292	4+3 m 35 mm ² cables with electrodeholder pincer, ground clamp and 50 mm ² safety connections - brush/hammer - shield with lens		
DIGITECH 3200 VP2 COMPACT Suggested air cooled version with torch		●	
DIGITECH 3200 VP2 COMPACT Suggested water cooled version with torch			≈



DIGITECH 3200 VP2 COMPACT

DIGITECH 3300 VP2

ORDER INFORMATION

CODE	DESCRIPTION	DIGITECH VP2 3300	
		AIR	WATER
	POWER SOURCES		
004705	Power Source DIGITECH 3300 VP2 400 V	●	≈
	PREMIUM VERSIONS - POWER SOURCE FITTED WITH SOFTWARE		
004705PR	Power source DIGITECH 3300 VP2 PREMIUM 400 V with vision.FULL PACKAGE and Ethernet socket		
	DIGITECH VP2's PREMIUM READY FOR INDUSTRY 4.0 - PREPARED To be connected to QR WIFI READER and/or to WIFI LAN		
004707PR	Power source DIGITECH 3300 VP2 PREMIUM 4.0 READY 400V vision.FULL PACKAGE & Ethernet & USB socket		
	SOFTWARE FOR SPECIAL MIG/MAG PROCESS		
050002	SM1 - SPECIAL MIG Process Package including: vision.COLD, vision.POWER, vision.ULTRASPEED, vision.PIPE and ECP - Extra Curves Package		
050003	SP2 - PERFORMANCE Process Package including: vision.PULSE-UP, vision.PULSE-RUN, vision.ULTRASPEED and ECP - Extra Curves Package		
050004	SFP - vision.FULL-PACKAGE complete package with Special MIG Process Package (SM1) and Special PULSE Process: vision.PULSE-UP, vision.PULSE-RUN and vision.PULSE-POWER with extra curves ECP		
050050	ECP - Extra Curves Package to meet special application		
	EN 1090 WPQR - WPS		
	Collection of WPQR - WPS for DIGITECH		
	INTERCONNECTING CABLES		
010839	1,2 m Air / Water cooled Interconnecting cable Power source-Wire feeder	●	≈
010842	5 m Air / Water cooled Interconnecting cable Power source-Wire feeder		
010846	10 m Air / Water cooled Interconnecting cable Power source-Wire feeder		
	WIRE FEEDERS		
030716	Wire Feeder HT 6 with Euro Connection 4 rolls (Ø 1.0 ÷ 1.2)	●	≈
031116	WK 4 standard wheels kit for HT 6 feeder		
031007	WK 2 extra-large wheels kit for HT 6 feeder		
031117	HK 1 Hanging Kit for HT 6 PRO DRIVE feeder		
	ALUMINIUM KIT		
030895	Aluminium Kit of double grooved TWIN rolls (Ø 0.8 ÷ 1.0) and gears kit for Al wires		
030897	Aluminium Kit of double grooved TWIN rolls (Ø 1.0 ÷ 1.2) and gears kit for Al wires		
030899	Aluminium Kit of double grooved TWIN rolls (Ø 1.2 ÷ 1.6) and gears kit for Al wires		
	MIG MAG WELDING TORCHES		
020466	CEA Torch CX 353/4 4 m wire Ø 0.8 ÷ 1.2 CO2 340A @60% / Mix 290A @60%	●	
020472	CEA Torch CXH 302/4 4 m wire Ø 0.8 ÷ 1.2 water cooled CO2 300A @100% / Mix 250A @100%		≈
020488	Push Pull Torch PP 401 D 8 m 24 V -wire Ø 0,8 ÷ 1,2 water cooled (to be ordered w. 031107)		
031107	Push Pull Synchronizer PC Board KIT for QF4 and HT5 (to be ordered with the Push Pull torch)		
031113	Push Pull Synchronizer PC Board KIT 24 / 42 V for MF4, QF7 PRO DRIVE and HT 6 PRO DRIVE (to be ordered with the Push pull torch)		
	TIG TORCHES WITH BUILT-IN GAS VALVE FOR TOUCH-START TECHNIQUE		
020568	Torch RTX 26.4 4 m - 180 A 35%		
	WATER COOLING		
032095	Water cooling equipment HR 31 400 V		≈
402275A	Cea CL-1100 cooling liquid - 5 l Tank		≈
	TROLLEYS		
234914	Trolley CT 70 with 4 rolls for power source, cooling equipment and cylinder (and autotransformer)	●	≈
234928	Trolley CT 75 with 4 rolls for power source, cooling equipment and cylinder (and autotransformer)		
	GROUND CABLES		
239603	50 mm ² / 4 m Ground cable with clamp	●	≈
	GAS REDUCERS		
020916	Reducer with flowmeter and 1 manometer	●	≈
	OTHER OPTION[S]		
236590	Metallic spool adaptor		
236234	RC 178 remote control with 5 m cable		
020340	Autotransformer A 13-H 220/400 V 50/60 Hz 3 Phase		
460262	4+3 m 50 mm ² cables with electrodeholder pincer, ground clamp and 50mm ² safety connections brush/hammer - shield with lens		
	DIGITECH 3300 VP2 Suggested air cooled version with torch	●	
	DIGITECH 3300 VP2 Suggested water cooled version with torch		≈

DIGITECH 4003/5003 VP3

ORDER INFORMATION

CODE	DESCRIPTION	DIGITECH VP3 4003		DIGITECH VP3 5003	
		AIR	WATER	AIR	WATER
POWER SOURCES					
004708	Power Source DIGITECH 4003 VP3 400 V	●	≈		
004713	Power Source DIGITECH 5003 VP3 400 V			●	≈
SPECIAL VERSION - POWER SOURCE FITTED WITH SOFTWARE					
004798PR	Power source DIGITECH 4003 VP3 PREMIUM 400 V with vision.FULL PACKAGE and Ethernet socket				
004713PR	Power source DIGITECH 5003 VP3 PREMIUM 400 V with vision.FULL PACKAGE and Ethernet socket				
DIGITECH VP3's PREMIUM READY FOR INDUSTRY 4.0 - PREPARED To be connected to QR WIFI READER and/or to WIFI LAN					
004709PR	Power source DIGITECH 4003 VP3 PREMIUM 4.0 READY 400V vision.FULL PACKAGE & Ethernet & USB socket				
004714PR	Power source DIGITECH 5003 VP3 PREMIUM 4.0 READY 400V vision.FULL PACKAGE & Ethernet & USB socket				
SOFTWARE FOR SPECIAL MIG/MAG PROCESS					
050002	SM1 - SPECIAL MIG Process Package: vision.COLD, vision.POWER, vision.ULTRASPEED, vision.PIPE and ECP				
050003	SP2 - PERFORMANCE Process Package: vision.PULSE-UP, vision.PULSE-RUN, vision.ULTRASPEED and ECP				
050004	SFP - vision.FULL-PACKAGE complete package with Special MIG Process Package (SM1) and Special PULSE Process: vision.PULSE-UP, vision.PULSE-RUN and vision.PULSE-POWER with extra curves ECP				
050050	ECP -Extra Curves Package to meet special application				
EN 1090 WPQR - WPS					
Collection of WPQR - WPS for DIGITECH					
INTERCONNECTING CABLES					
010839	1,2 m Air / Water cooled Interconnecting cable Power source-Wire feeder	●	≈	●	≈
010842	5 m Air / Water cooled Interconnecting cable Power source-Wire feeder				
010846	10 m Air / Water cooled Interconnecting cable Power source-Wire feeder				
WIRE FEEDERS					
030716	Wire Feeder HT 6 PRO DRIVE with Euro Connection 4 rolls (Ø 1.0÷1.2)	●	≈	●	≈
031116	WK 4 standard wheels kit for HT 6 PRO DRIVE feeder				
031007	WK 2 extra-large wheels kit for HT 6 PRO DRIVE feeder				
031117	HK 1 Hanging Kit for HT 6 PRO DRIVE feeder				
ALUMINIUM KIT					
030895	Aluminium Kit of double grooved TWIN rolls (Ø 0.8÷1.0) and gears kit for Al wires				
030897	Aluminium Kit of double grooved TWIN rolls (Ø 1.0÷1.2) and gears kit for Al wires				
030899	Aluminium Kit of double grooved TWIN rolls (Ø 1.2÷1.6) and gears kit for Al wires				
MIG MAG WELDING TORCHES					
020471	CEA Torch CX 451/4 4 m wire Ø 0.8÷1.6 CO2 400A @60% / Mix 300A @60%	●		●	
020479	CEA Torch CXH 402/4 4 m wire Ø 0.8÷1.6 water cooled CO2 500A @100% / Mix 450A @100%		≈		≈
020488	Push Pull Torch PP 401 D 8 m 24 V -wire Ø 0,8÷1,2 water cooled (to be ordered w. 031107)				
031107	Push Pull Synchronizer PC Board KIT for QF4 and HT5 (to be ordered with the Push Pull torch)				
031113	Push Pull Synchronizer PC Board KIT 24 / 42 V for MF4, QF7 PRO DRIVE and HT 6 PRO DRIVE (to be ordered with the Push pull torch)				
TIG TORCHES WITH BUILT-IN GAS VALVE FOR TOUCH-START TECHNIQUE					
020568	Torch RTX 26.4 4 m - 180 A 35%				
WATER COOLING					
032125	Water cooling equipment HRX 51 400 V		≈		≈
402275A	Cea CL-1100 cooling liquid - 5 l Tank		≈		≈
TROLLEYS					
234914	Trolley CT 70 with 4 rolls for power source, cooling equipment and cylinder (and autotransformer)	●	≈	●	≈
234928	Trolley CT 75 with 4 rolls for power source, cooling equipment and cylinder (and autotransformer)				
GROUND CABLES					
239603	50 mm ² / 4 m Ground cable with clamp	●	≈		
239607	70 mm ² / 4 m Ground cable with clamp			●	≈
GAS REDUCERS					
020916	Reducer with flowmeter and 1 manometer	●	≈	●	≈
OTHER OPTION[S]					
236590	Metallic spool adaptor				
236234	RC 178 remote control with 5 m cable				
020340	Autotransformer A 13-H 220/400 V 50/60 Hz 3 Phase				
460262	4+3 m 50 mm ² cables with electrodeholder pincer, ground clamp and 50mm ² safety connections brush/hammer - shield with lens	●			
DIGITECH 4003 VP3 Suggested air cooled version with torch		●			
DIGITECH 4003 VP3 Suggested water cooled version with torch			≈		
DIGITECH 5003 VP3 Suggested air cooled version with torch				●	
DIGITECH 5003 VP3 Suggested water cooled version with torch					≈

DIGITECH DOUBLE FEEDER

ORDER INFORMATION

CODE	DESCRIPTION	DIGITECH VP2 3300		DIGITECH VP3 4003		DIGITECH VP3 5003	
		AIR	WATER	AIR	WATER	AIR	WATER
	POWER SOURCES						
004705	Power Source DIGITECH 3300 VP2 400 V	●	≈				
004708	Power Source DIGITECH 4003 VP3 400 V			●	≈		
004713	Power Source DIGITECH 5003 VP3 400 V					●	≈
	SPECIAL VERSION - POWER SOURCE FITTED WITH SOFTWARE						
004705PR	Power source DIGITECH 3300 VP2 PREMIUM 400 V with vision.FULL PACKAGE and Ethernet socket						
004708PR	Power source DIGITECH 4003 VP3 PREMIUM 400 V with vision.FULL PACKAGE and Ethernet socket						
004713PR	Power source DIGITECH 5003 VP3 PREMIUM 400 V with vision.FULL PACKAGE and Ethernet socket						
	SOFTWARE FOR SPECIAL MIG/MAG PROCESS						
050002	SM1 - SPECIAL MIG Process Package: vision.COLD, vision.POWER, vision.ULTRASPEED, vision.PIPE and ECP						
050003	SP2 - PERFORMANCE Process Package: vision.PULSE-UP, vision.PULSE-RUN, vision.ULTRASPEED and ECP						
050004	SFP - vision.FULL-PACKAGE complete package with Special MIG Process Package (SM1) and Special PULSE Process: vision.PULSE-UP, vision.PULSE-RUN and vision.PULSE-POWER with extra curves ECP						
050050	ECP - Extra Curves Package to meet special application						
	EN 1090 WPQR - WPS						
	Collection of WPQR - WPS for DIGITECH						
	INTERCONNECTING CABLES						
010839	1,2 m Air / Water cooled Interconnecting cable Power source-Wire feeder	●	≈	●	≈	●	≈
010839	1,2 m Air / Water cooled Interconnecting cable Power source-Wire feeder	●	≈	●	≈	●	≈
010842	5 m Air / Water cooled Interconnecting cable Power source-Wire feeder						
010846	10 m Air / Water cooled Interconnecting cable Power source-Wire feeder						
	WIRE FEEDERS						
030716	Wire Feeder HT 6 with Euro Connection 4 rolls (Ø 1.0÷1.2)	●	≈	●	≈	●	≈
030716	Wire Feeder HT 6 with Euro Connection 4 rolls (Ø 1.0÷1.2)	●	≈	●	≈	●	≈
030873	Support and Connection Kit for DOUBLE HT 6 wire feeder system for DIGITECH VP2	●	≈				
031120	Support and Connection Kit for DOUBLE HT 6 wire feeder system for DIGITECH VP3			●	≈	●	≈
	ALUMINIUM KIT						
030895	Aluminium Kit of double grooved TWIN rolls (Ø 0.8÷1.0) and gears kit for Al wires						
030897	Aluminium Kit of double grooved TWIN rolls (Ø 1.0÷1.2) and gears kit for Al wires						
030899	Aluminium Kit of double grooved TWIN rolls (Ø 1.2÷1.6) and gears kit for Al wires						
	MIG MAG WELDING TORCHES						
020466	CEA Torch CX 353/4 4 m wire Ø 0.8÷1.2 C02 340A @60% / Mix 290A @60%	●					
020471	CEA Torch CX 451/4 4 m wire Ø 0.8÷1.6 C02 400A @60% / Mix 300A @60%			●		●	
020472	CEA Torch CXH 302/4 4 m wire Ø 0.8÷1.2 water cooled C02 300A @100% / Mix 250A @100%		≈				
020479	CEA Torch CXH 402/4 4 m wire Ø 0.8÷1.6 water cooled C02 500A @100% / Mix 450A @100%				≈		≈
020488	Push Pull Torch PP 401 D 8 m 24 V -wire Ø 0,8÷1,2 water cooled (to be ordered w. 031107)						
031107	Push Pull Synchronizer PC Board KIT for QF4 and HT5 (to be ordered with the Push Pull torch)						
	WATER COOLING						
032095	Water cooling equipment HR 31 400 V		≈				
032125	Water cooling equipment HRX 51 400 V				≈		≈
402275A	Cea CL-1100 cooling liquid - 5 l Tank		≈		≈		≈
	TROLLEYS						
234914	Trolley CT 70 with 4 rolls for power source, cooling equipment and cylinder (and autotransformer)	●	≈				
234928	Trolley CT 75 with 4 rolls for power source, cooling equipment and cylinder (and autotransformer)						
234923	Trolley CT 72 Large for power source and 2 gas cylinders and autotransformer						
234935	Trolley CT 82 Large for power source and 2 gas cylinders and autotransformer			●	≈	●	≈
	GROUND CABLES						
239603	50 mm² / 4 m Ground cable with clamp	●	≈	●	≈		
239607	70 mm² / 4 m Ground cable with clamp					●	≈
	GAS REDUCERS						
020916	Reducer with flowmeter and 1 manometer	●	≈	●	≈	●	≈
	OTHER OPTION[S]						
236590	Metallic spool adaptor						
236234	RC 178 remote control with 5 m cable						
020340	Autotransformer A 13-H 220/400 V 50/60 Hz 3 Phase						
	DIGITECH 3300 VP2 with Double Feeder HT 6 - Suggested air cooled version with torch	●					
	DIGITECH 3300 VP2 with Double Feeder HT 6 - Suggested water cooled version with torch		≈				
	DIGITECH 4003 VP3 with Double Feeder HT 6 - Suggested air cooled version with torch			●			
	DIGITECH 4003 VP3 with Double Feeder HT 6 - Suggested water cooled version with torch				≈		
	DIGITECH 5003 VP3 with Double Feeder HT 6 - Suggested air cooled version with torch					●	
	DIGITECH 5003 VP3 with Double Feeder HT 6 - Suggested water cooled version with torch						≈