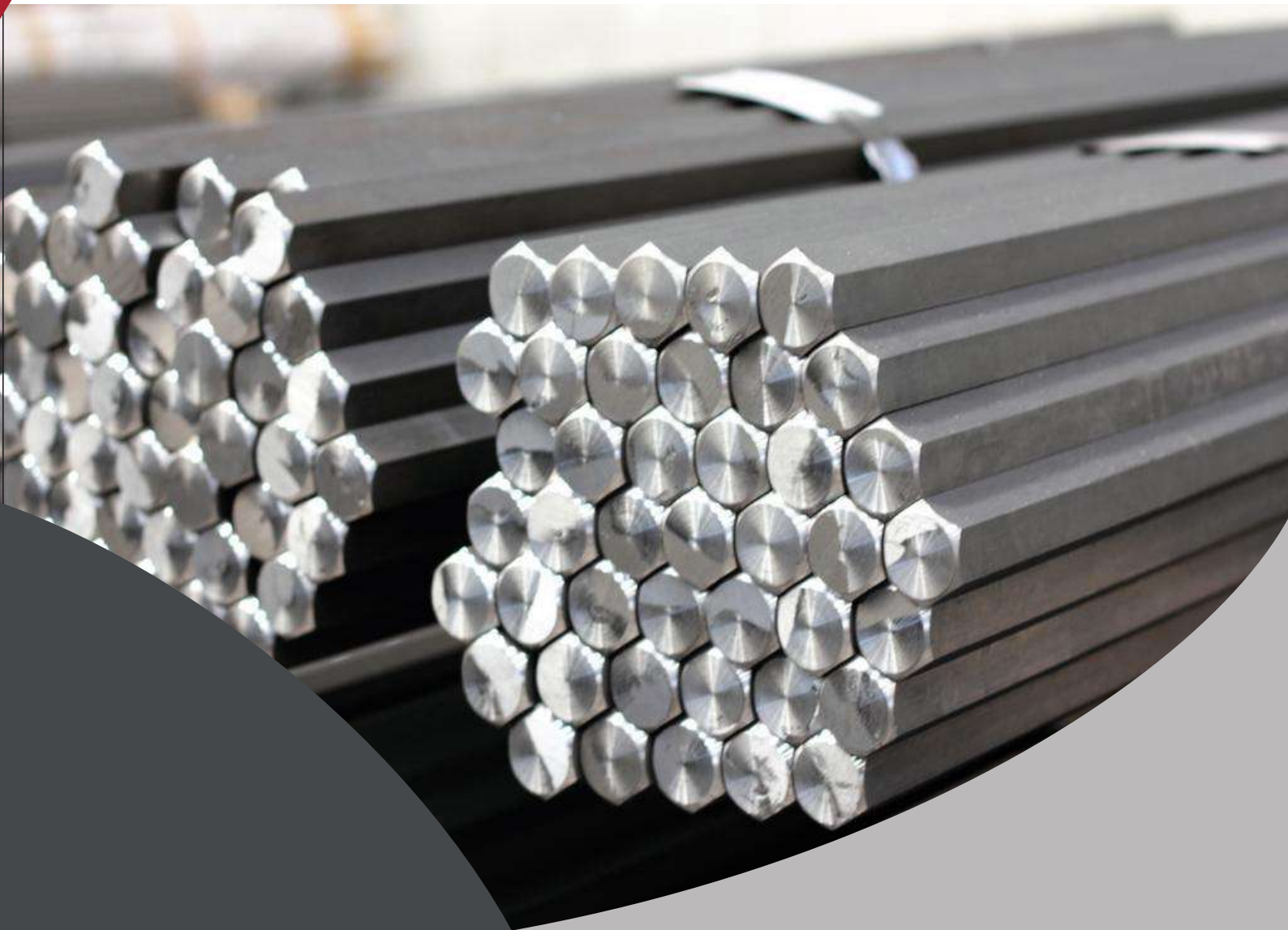


# MC STEEL

**we try harder**

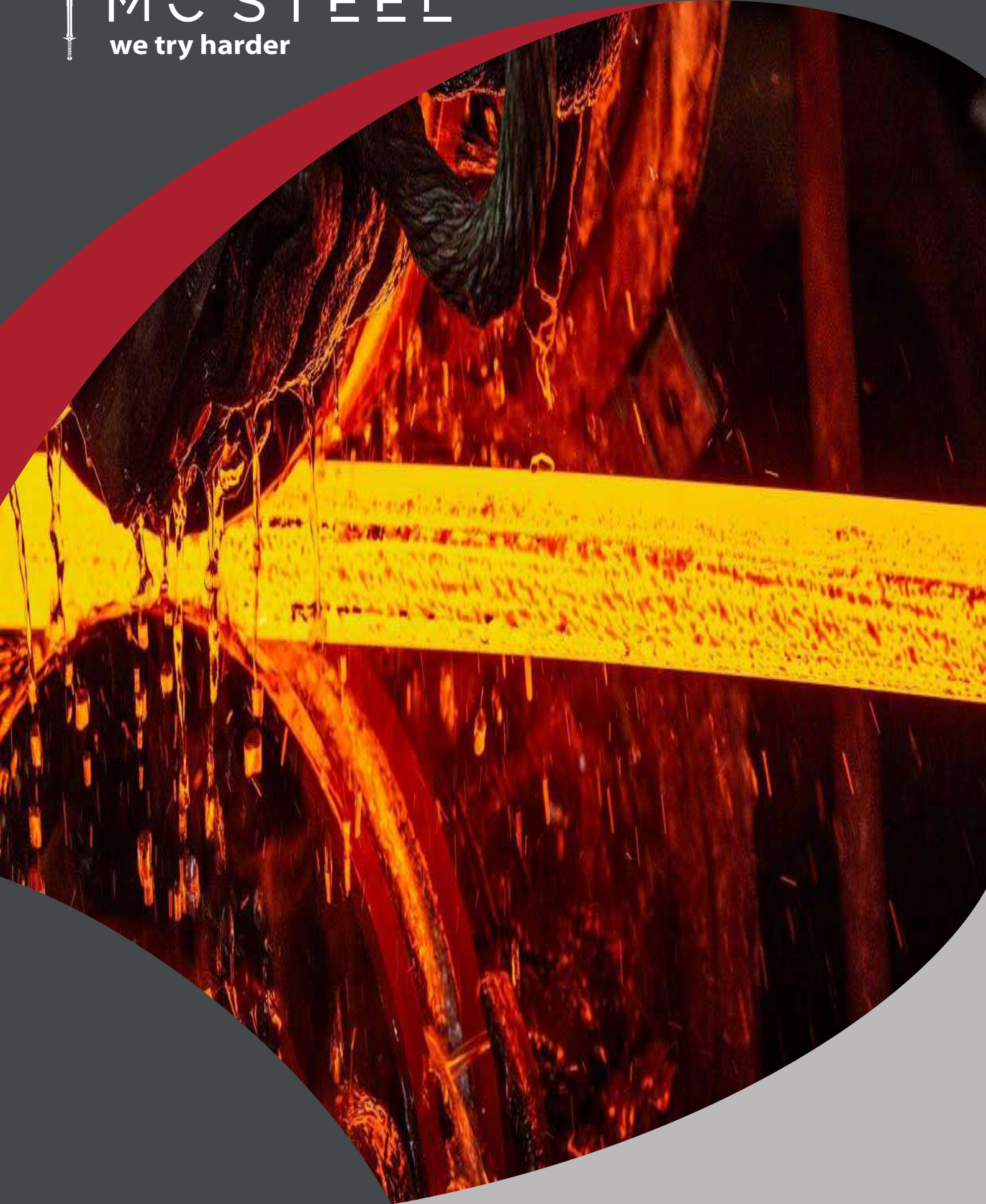


[www.mcsteel.com.tr](http://www.mcsteel.com.tr)

SPRING STEELS /

Contents

FREE CUTTING STEELS_____	5
CARBON STEELS/MILDSTEELS_____	6
ALLOY STEEL _____	7-8
SPRING STEEL / FLAT BARS_____	9
FLAT STEEL BARS _____	10
ELEVATOR GUIDE RAILS_____	11-12-13





MC Steel's hot rolled and cold rolled products operate with the philosophy of being an internationally recognized bright steel producer and meet the bright steel needs of the sectors it serves. The products produced by MC Steel cold drawing are used in various sectors such as automotive, white goods, machinery, aviation, defense and oil industry. It supplies steel in different diameters and sizes upon request, and offers its products in various quality standards to our valued customers.

MC Steel's advantages?

- FAST delivery on time
- Qualified product
- Competitive price
- Customer oriented solution
- Large product range





### FREE CUTTING STEELS

MC STEEL produce cold drawn free cutting steels.

### PRODUCTION SIZE RANGE

#### BRIGHT SURFACE / COLD DRAWN

ROUND : FORM 4 MM UP TO 80 MM

HEXAGONAL: FORM 5 MM UP TO 60 MM

SQUARE : FORM 4 MM UP TO 40 MM

### STANDART EXPORT PRODUCTION

Both Side Chamfer

3 Meters standart lenght, requested lenght of production available.

3. 1.B certificate

Jute Packing, well stripped by steel strips.

### OPTIONAL PRODUCTION

Wooden box packing

Crack detection bu Eddy current test Peeled and Ground surface

#### QUALITY & GRADES

Euronorm(EN)	9SMn28	11SMnPb30	11SMn37	11SMnPb37	35s20	46S20	44SMn28
WerkstoffNo	1,0715	1,0718	1,0736	1,0737	1,0726	1,0727	1,0762
Euronorm(EN)	9SMn28	11SMnPb30	11SMn37	11SMnPb37	35s20	46S20	44SMn28
Germany	S250	9SMnPb28	9SMn36	9SMnPb36	35s20	45S20	
France(AFNOR)	230M07	S250Pb	S300	S300Pb	35MF4	46S20	45MF6.3
UK(BS)	CF9SMn28						
Italy(UNI)	SUM22	CF9SMnPb28	CF9SMn36	CF9SMnPb36			CF44SMn28
Japan(JIS)	F210A(F210L)	SUM22L(SUM23L)	SUM25				
Spain	1912	F210C(F210M)	12SMn35	12SMnPb35	F210G		
Sweden	1213	1914		1926	1957		
SAE		12L13	1215	12L14	1140	1146	
Bulgaria	AS4	A9GRv					
Hungary			AS5		ANS1	ANS2	

\*Requested lenght of production

\*3.1.B certificate

\*Standart jute packing and optional wooden box

[www.mcsteel.com.tr](http://www.mcsteel.com.tr)



### **CARBON STEELS /MILDSTEELS**

**BRIGHT BARS & HOT ROLLED LONG BARS**

**PRODUCTION SIZE RANGE :**

**HOT ROLLED : (BLACK BARS)**

**ROUND : FROM 16 MM UP TO 220 MM**

**HEXAGONAL: FROM 18 MM UP TO 70 MM**

**SQUARE : FROM 20 MM UP TO 60 MM**

**COLD DRAWN: (BRIGHT BARS)**

**ROUND : FROM 3 MM UP TO 80 MM**

**HEXAGONAL : FROM 14 MM UP TO 70 MM**

**SQUARE : FROM 14 MM UP TO 50 MM**

**\*DEPEND ON CUSTOMER REQUEST GROUND SURFACE AND PEELED SURFACE DELIVERY AVAILABLE**

### **QUALITY & GRADES**

**SAE : 1010,1018,1020,1022,1030,1035,1040,1045,1050,1060,1070 etc.**

**DIN : CK45, CK15, C10, C40, C45 etc.**

**BS : 080M40, 070M20, 080A15, 080A42, 080M30 etc.**

**AFNOR : XC25, XC18, XC45 etc.**

**OTHER : S235JR, S275JR, S355JR, St37-2, St42-3, St44-2, St52-3, A36, A42 etc.**

\*Requested length of production

\*3.1B certificate

\*Standard jute packing and optional wooden box

## **ALLOY STEEL**

**BRIGHT BARS & HOT ROLLED LONG BARS**

**PRODUCTION SIZE RANGE :**

**HOT ROLLED : (BLACK BARS)**

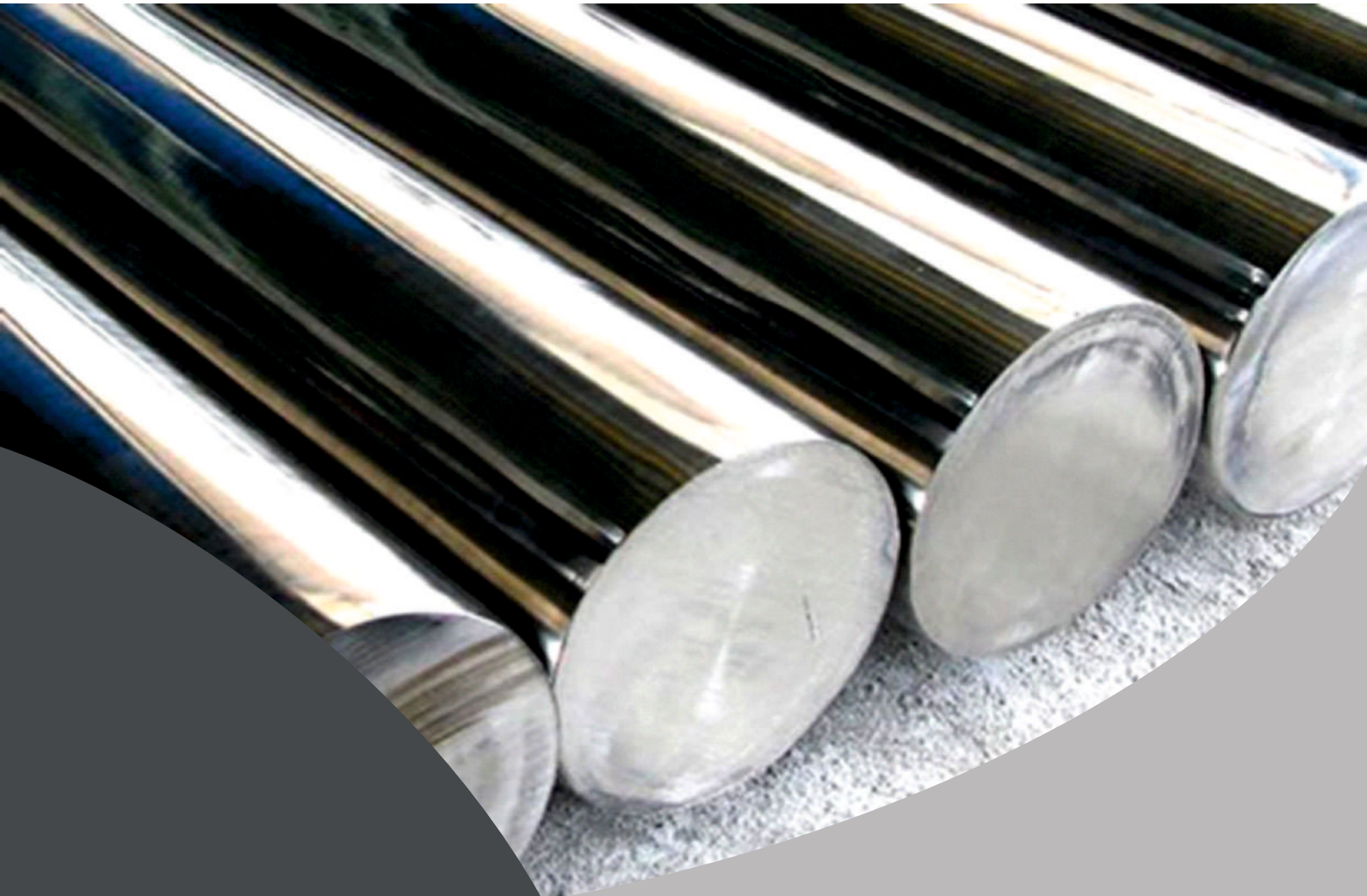
**ROUND : FROM 16 MM UP TO 600 MM**

**COLD ROLLED : (BRIGHT BARS)**

**ROUND : FROM 3 MM UP TO 120 MM**

**ALLOY STEELS ARE COLLECTED IN 4 MAIN GROUPS ACCORDING TO THEIR CHEMICAL COMPOSITION**

- 1. UNALLOYED TEMPERED STEELS**
- 2. MANGANESE ALLOY TEMPERED STEELS**
- 3. CHROMIUM ALLOY TEMPERED STEELS**
- 4. CHROME-MOLYBDENUM ALLOY TEMPERED STEELS**





### ALLOY STEELS AND COMPOSITIONS

Malz. No.	DIN	SAE / AISI	C	Simax	Mn	Pmax	Smax	Cr	Mo	Ni	V
1.5038	40 Mn 4	1039	0.36-0.44	0.25-0.50	0.80-1.10	0.035	0.035	-	-	-	-
1.5065	28 Mn 6	1330	0.25-0.32	0,40	1.30-1.65	0.035	0.035	-	-	-	-
1.6511	36 CrNiMo 4	9840	0.32-0.40	0,40	0.50-0.80	0.035	0.035	0.90-1.20	0.15-0.30	0.90-1.20	-
1.6580	30 CrNiMo 8	-	0.26-0.33	0,40	0.40-0.70	0.035	0.035	1.40-1.70	0.30-0.50	1.80-2.20	-
1.6582	34 CrNiMo 6	4340	0.30-0.38	0,40	0.30-0.60	0.035	0.035	1.80-2.20	0.15-0.30	1.40-1.70	-
1.7003	38 Cr 2	-	0.34-0.41	0,40	0.50-0.80	0.035	0.035	0.40-0.60	-	-	-
1.7006	46 Cr 2	5045	0.42-0.50	0,40	0.50-0.80	0.035	0.035	0.40-0.60	-	-	-
1.7033	34 Cr 4	5132	0.30-0.37	0,40	0.60-0.90	0.035	0.035	0.90-1.20	-	-	-
1.7034	37 Cr 4	5135	0.34-0.41	0,40	0.60-0.90	0.035	0.035	0.90-1.20	-	-	-
1.7035	41 Cr 4	5140	0.38-0.45	0,40	0.60-0.90	0.035	0.035	0.90-1.20	-	-	-
1.7037	34 CrS 4	-	0.30-0.37	0,40	0.60-0.90	0.035	0.020-0.035	0.90-1.20	-	-	-
1.7038	37 CrS 4	-	0.34-0.41	0,40	0.60-0.90	0.035	0.020-0.035	0.90-1.20	-	-	-
1.7039	41 CrS 4	-	0.38-0.45	0,40	0.50-0.80	0.035	0.020-0.035	0.90-1.20	-	-	-
1.7218	25 CrMo 4	4130	0.22-0.29	0,40	0.50-0.80	0.035	0.035	0.90-1.20	0.15-0.30	-	-
1.7220	34 CrMo 4	4135;4137	0.30-0.37	0,40	0.50-0.80	0.035	0.035	0.90-1.20	0.15-0.30	-	-
1.7225	42 CrMo 4	4140	0.38-0.45	0,40	0.50-0.80	0.035	0.035	0.90-1.20	0.15-0.30	-	-
1.7226	34 CrMoS 4	-	0.30-0.37	0,40	0.50-0.80	0.035	0.020-0.035	0.90-1.20	0.15-0.30	-	-
1.7227	42 CrMoS 4	-	0.38-0.45	0,40	0.50-0.80	0.035	0.020-0.035	0.90-1.20	0.15-0.30	-	-
1.7228	50 CrMo 4	4150	0.46-0.51	0,40	0.50-0.80	0.035	0.035	0.90-1.20	0.15-0.30	-	-
1.7361	32 CrMo12 4	-	0.28-0.35	0,40	0.40-0.70	0.035	0.035	2.80-3.30	0.30-0.50	0.30	-
1.7707	30 CrMoV 9	-	0.26-0.34	0,40	0.40-0.70	0.035	0.035	2.30-2.70	-	-	0.10-0.20
1.8159	50 CrV 4	6150	0.47-0.55	0,40	0.70-1.10	0.035	0.035	0.90-1.20	-	-	0.10-0.20

### ALLOY STEEL MECHANICAL PROPERTIES

Malz. No.	DIN	SAE / AISI	AKMA SINIRI(Re) ?Mpa				ÇEKME DAYANIMI(Rm) Mpa				KOPMA UZAMASI (A) LO=5 D0				KESİT DARALMASI(Z) %			
			16 MM	16-40 MM	40-100 MM	100-160 MM	16 MM	16-40 MM	40-100 MM	100-160MM	16 MM	16-40 MM	40-100 MM	100-160 MM	16 MM	16-40 MM	40-100 MM	100-160 MM
1.5038	40 Mn 4	1039	635	540	440	880-1080	780-930	690-830	12	14	15	40	45	50				
1.5065	28 Mn 6	1330	590	490	440	780-930	690-840	640-790	13	15	16	40	45	50				
1.6511	36 CrNiMo 4	9840	900	800	700	1100-1300	1100-1200	900-1000	10	11	12	13	45	50	55	60		
1.6580	30 CrNiMo 8	-	1050	1050	900	1250-1450	1250-1450	1100-1300	9	9	10	11	40	40	45	50		
1.6582	34 CrNiMo 6	4340	1000	900	800	1200-1400	1100-1300	1000-1200	9	10	11	12	40	45	50	55		
1.7003	38 Cr 2	-	550	450	350	800-950	700-850	600-750	14	15	17	35	40	45				
1.7006	46 Cr 2	5045	650	550	400	900-1100	800-950	650-800	11	14	15	35	40	45				
1.7033	34 Cr 4	5132	700	590	460	900-1100	800-950	700-850	11	13	14	35	40	45				
1.7034	37 Cr 4	5135	750	630	510	950-1150	850-1000	750-900	11	13	14	35	40	45				
1.7035	41 Cr 4	5140	800	660	560	1100-1200	900-1100	800-950	10	12	14	30	35	40				
1.7037	34 CrS 4	-	700	590	460	900-1100	800-950	700-850	11	13	14	35	40	45				
1.7038	37 CrS 4	-	750	630	510	950-1150	850-1000	750-900	11	13	14	35	40	45				
1.7039	41 CrS 4	-	800	660	560	1100-1200	900-1100	800-950	10	12	14	30	35	40				
1.7218	25 CrMo 4	4130	700	600	450	900-1100	850-950	700-800	12	14	15	16	50	55	60	60		
1.7220	34 CrMo 4	4135;4137	800	650	550	1000-1200	900-1000	800-950	11	12	14	15	45	50	55	55		
1.7225	42 CrMo 4	4140	900	750	650	1100-1300	1100-1200	900-1100	10	11	12	13	40	45	50	50		
1.7226	34 CrMoS 4	-	800	650	550	1100-1200	900-1100	800-950	11	12	14	15	45	50	55	55		
1.7227	42 CrMoS 4	-	900	750	650	1100-1300	1100-1200	900-1100	10	11	12	13	40	45	50	50		
1.7228	50 CrMo 4	4150	900	780	700	1100-1300	1000-1300	900-1100	9	10	12	13	40	45	50	50		
1.7361	32 CrMo12 4	-	1030	1030	885	1230-1420	1230-1420	1080-1270	9	9	10	11	35	35	40	45		
1.7707	30 CrMoV 9	-	1050	1020	900	1250-1450	1200-1450	1100-1300	9	9	10	11	35	35	40	45		
1.8159	50 CrV 4	6150	900	800	700	1100-1300	1000-1200	900-1100	9	10	12	13	40	45	50	50		



### **SPRING STEELS /**

MC Steel Produce spring steels for automotive industries.

### **PRODUCTION SIZE RANGE (IMPERIAL AND METRIC SIZES AVAILABLE)**

**THICKNESS** : FROM 5 MM UP TO 100 MM

**WIDTH** : FROM 10 MM UP TO 250 MM

### **STANDARTS OF PRODUCTION**

SHARP EDGES Et READIUS CORNER AVAILABLE

DIN EN 10058 (DIN 1017)

DIN EN 10058 (DIN 59200)

DIN EN 10092-1-A (DIN 59145)

DIN EN 10092-1-B (DIN 4620)

DIN EN 10092-1-C (DIN 59146)

DIN EN 10092-2- (DIN 1570)

### **QUALITY & GRADES**

DIN : 55Cr3, 60SiMn5, 51CrV4, 65Si7, 46Si7, 50CrV4, 51CrMoV4

SAE : 5160 (H), 6150, 9260, 9262

JIS : SUP9,SUP9A,SUP13

AFNOR: 56SC7, 61SC7, 54SiCrV6

BS : 251A58



**FLAT STEEL BARS**

**PRODUCTION SIZE RANGE**

**HOT ROLLED : (BLACK BARS)**

**THICKNESS : FROM 5 MM UP TO 100 MM**

**WIDTH : FROM 10 MM UP TO 250 MM**

**COLD DRAWN : (BRIGHT BARS)**

**THICKNESS : FROM 5 MM UP TO 50 MM**

**WIDTH : FROM 5 MM UP TO 100 MM**

**STANDARTS OF PRODUCTION**

**DIN 1017 / EN 10058**

**IMPERIAL AND METRIC SIZE PRODUCTION AVAILABLE**

**QUALITY & GRADES**

**SAE : 1010,1018,1020,1022,1030,1035,1040,1045,1050,1060,1070 etc.**

**DIN : CK45,CK15,C10,C40,C45 etc.**

**BS : 080M40, 070M20, 080A15, 080A42, 080M30 etc.**

**AFNOR: XC25,XC18,XC45 etc.**

**OTHER: S235JR, S275JR, S355JR, St37-2, St42-3, St44-2, St52-3, A36, A42 etc.**

\*Requested lenght of production

\*3.1B certificate

\*Standart jute packing and optional wooden box

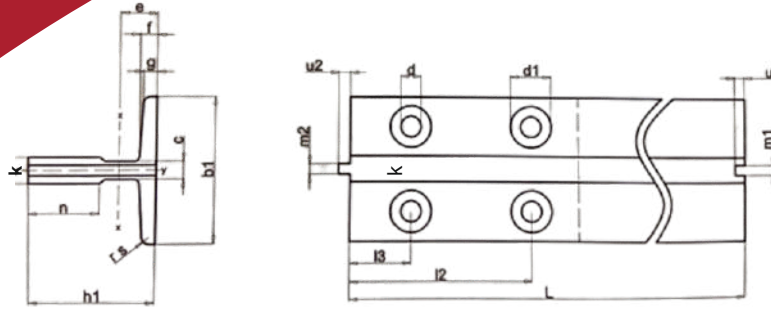
[www.mcsteel.com.tr](http://www.mcsteel.com.tr)






# ELEVATOR GUIDE RAILS

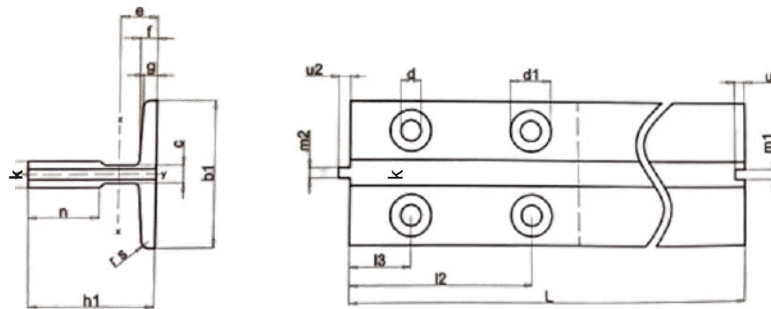
**ELEVATOR GUIDE RAILS**



Ebat / Size (mm)	b1	h1	h	k	n	c	g	f	rs	
<b>Tolerans</b>	-1	+0,1	+0,1	0+0,1	0+3		+0,75	+0,75		
<b>T 50/A</b>	50 x 50 x 5	50	50	49	5	27	4,5	5	5,4	1


Ebat / Size (mm)	q1 kg/ms	m1	m2	u1	u2	d	b2	b3	l1	l2	l3	L	
<b>Tolerans</b>		0+0,06	0-0,06	0-0,1	+0,1		+0,5	+0,2	0+3	+0,2	+0,2	+2	
<b>T 50/A</b>	50 x 50 x 5	3,7	2,6	2,55	3,5	3	9	50	30	200	75	25	5000


**Standartlar / Standards** TS ISO 7465 / Mart 2011  
**Boy / Lenght** 5000mm ±2mm  
**Paket / Packing** Bundles 1000 kg Approx  
**Korumu / End Protection** Coated by anti-corrosion oil to remove easilly with usual disolvents



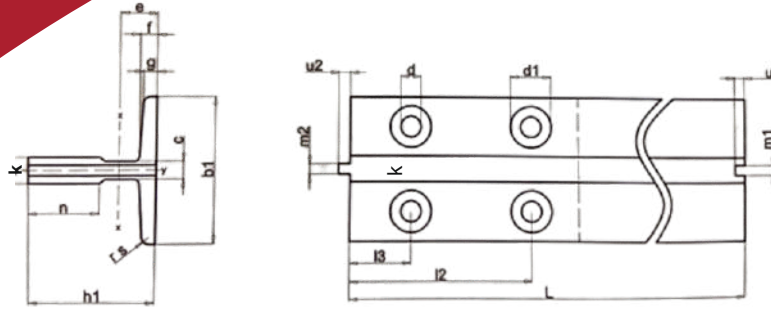
Ebat / Size (mm)	b1	h1	h	k	n	c	g	f	rs	
<b>Tolerans</b>	+1,5	+0,1	+0,1	0+0,1	0+3		+0,75	+0,75		
<b>T 70/A</b>	70 x 65 x 9	70	65	64	9	34	6	6	8	1,5

Ebat / Size (mm)	q1 kg/ms	m1	m2	u1	u2	d	b2	b3	l1	l2	l3	L	
<b>Tolerans</b>		0+0,06	0-0,06	0-0,1	+0,1		+0,5	+0,2	0+3	+0,2	+0,2	+2	
<b>T 70/A</b>	70 x 65 x 9	7,37	3	2,97	3,5	3	13	70	42	250	105	25	5000


**Standartlar / Standards** TS ISO 7465 / Mart 2011  
**Boy / Lenght** 5000mm ±2mm  
**Paket / Packing** Bundles 1000 kg Approx  
**Korumu / End Protection** Coated by anti-corrosion oil to remove easilly with usual disolvents




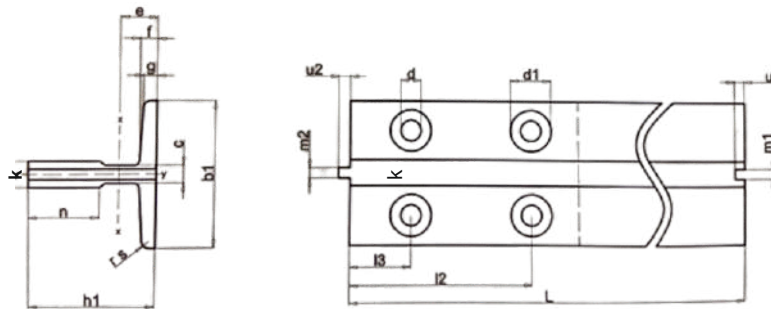
**ELEVATOR GUIDE RAILS**



Ebat / Size (mm)	b1	h1	h	k	n	c	g	f	rs	
<b>Tolerans</b>	+1,5	+0,1	+0,1	0+0,1	0+3		+0,75	+0,75		
<b>T 89/A</b>	<b>89 x 62 x 16</b>	<b>89</b>	<b>62</b>	<b>61</b>	<b>16</b>	<b>34</b>	<b>10</b>	<b>7,9</b>	<b>11,1</b>	<b>3</b>


Ebat / Size (mm)	q1 kg/ms	m1	m2	u1	u2	d	b2	b3	l1	l2	l3	L	
<b>Tolerans</b>		0+0,06	0-0,06	0-0,1	+0,1		+0,5	+0,2	0+3	+0,2	+0,2	+2	
<b>T 89/A</b>	<b>89 x 62 x 16</b>	<b>12,4</b>	<b>6,4</b>	<b>6,37</b>	<b>7,14</b>	<b>6,35</b>	<b>13</b>	<b>90</b>	<b>57,2</b>	<b>305</b>	<b>114,3</b>	<b>38,1</b>	<b>5000</b>


**Standartlar / Standards** TS ISO 7465 / Mart 2011  
**Boy / Lenght** 5000mm ±2mm  
**Paket / Packing** Bundles 1000 kg Approx  
**Korumu / End Protection** Coated by anti-corrosion oil to remove easilly with usual disolvents



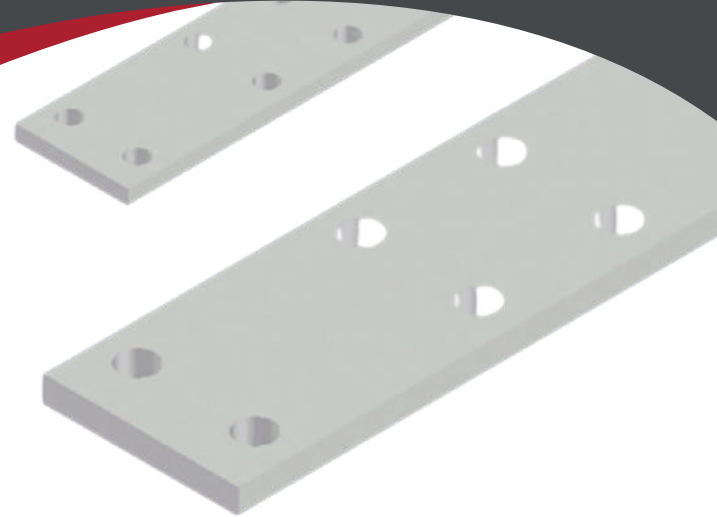
Ebat / Size (mm)	b1	h1	h	k	n	c	g	f	rs	
<b>Tolerans</b>	+1,5	+0,1	+0,1	0+0,1	0+3		+0,75	+0,75		
<b>T 90/A</b>	<b>90 x 75 x 16</b>	<b>90</b>	<b>75</b>	<b>74</b>	<b>16</b>	<b>42</b>	<b>10</b>	<b>8</b>	<b>10</b>	<b>4</b>

Ebat / Size (mm)	q1 kg/ms	m1	m2	u1	u2	d	b2	b3	l1	l2	l3	L	
<b>Tolerans</b>		0+0,06	0-0,06	+0,1	+0,1		+0,5	+0,2	0+3	+0,2	+0,2	+2	
<b>T 90/A</b>	<b>90 x 75 x 16</b>	<b>13,5</b>	<b>6,4</b>	<b>6,37</b>	<b>7,14</b>	<b>6,35</b>	<b>13</b>	<b>90</b>	<b>57,2</b>	<b>305</b>	<b>114,3</b>	<b>38,1</b>	<b>5000</b>

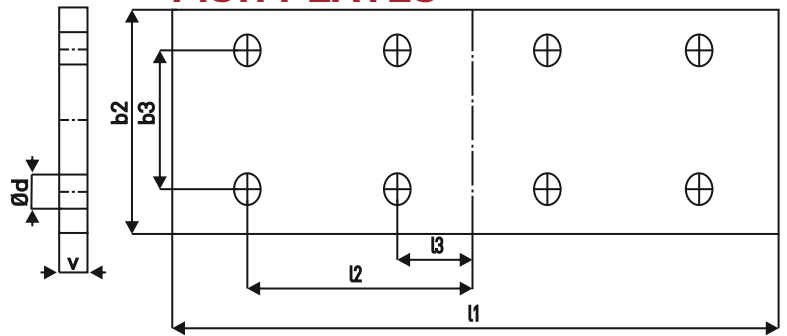

**Standartlar / Standards** TS ISO 7465 / Mart 2011  
**Boy / Lenght** 5000mm ±2mm  
**Paket / Packing** Bundles 1000 kg Approx  
**Korumu / End Protection** Coated by anti-corrosion oil to remove easilly with usual disolvents

### ELEVATOR COUNTERWEIGHTS

In our facilities, we produce elevator counterweights in required sizes and lengths, specifically for your projects.



### FISH PLATES



Ebat / Size (mm)	d	b2	b3	l1	l2	l3	v
<b>Tolerans</b>			±0,2	0 +3	±0,2	±0,2	0 +3
<b>T 50/A</b>	50 x 50 x 5	9	50	30	200	75	25
<b>T 70/A</b>	70 x 65 x 9	13	70	42	250	105	25
<b>T 89/A</b>	89 x 62 x 16	13	90	57,2	305	114,3	38,1
<b>T 90/A</b>	90 x 75 x 16	13	90	57,2	305	114,3	38,1

### ELEVATOR DOOR RAILS

**Ebat / Size (mm)**

**40 x 10 R**

**40 x 10 x 8 R**

In our facilities, we produce elevator door rails in the required quality, size and length, specifically for your projects.





# SERTİFİKA



**MC Steel Metal Dış Ticaret A.Ş.**

**İkiteli OSB Mah. Tormak Sanayi Tormak K Blok No: 8 / 8  
Başakşehir İstanbul Türkiye**

Yukarıda adı geçen kuruluş, aşağıda belirtilen kapsamda bir yönetim sistemini uygulamakta ve sürdürmekte olup ilgili standarda uygunluğu KingCert tarafından onaylanmıştır.

## ISO 9001:2015

**Kalite Yönetim Sistemi**

**Kapsam : Demir Çelikten Bar ve Çubukların, Profillerin, Levha Kazıkların (Palplans), Tüp ve Boruların Toptan Ticareti (Filmaşın, İnşaat Demiri, Sondaj Borusu, Petrol, Gaz Hatlar için Borular ile Tel Dahil)  
IAF/EA Kodu: 29**

Bu sertifika, yukarıda ünvanı bulunan kuruluşun ISO 9001:2015 standardının gerekliliklerini yerine getirdiği ve KingCert' e karşı olan tüm sorumluluklarını taşıdığı sürece yukarıda belirtilen kapsamda geçerlidir.

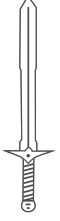
Sertifika Yayın Tarihi : 01.08.2022  
Sert. Son Basım Tarihi : 01.08.2022  
Sert. Geçerlilik Tarihi : 31.07.2023  
Sert. Periyodu Bitiş Tar. : 31.07.2025  
Sertifika No : 11659356581Q



  
King Cert International Certification Ltd.  
Director

King Cert International  
Certification Ltd.  
Manastirski Livadi, Str. Lavski  
Rid 19, Sofia Bulgaria  
info@KingCert.com  
FR.25. / 01.09.2016 / 04.06.2019 / 02

King Cert International Certification Ltd., bu sertifikada adı geçen kuruluşun yukarıdaki standardın şartlarına uygun bir yönetim sistemine sahip olduğunu belgeler. Sistem etkin bir şekilde sürdürüldükçe ve gözetim denetimleri her yıl yapıldığı müddetçe bu sertifika üç yıl boyunca geçerlidir. Sertifika'nın geçerliliği www.KingCert.com internet sayfasından kontrol edilebilir. Bu sertifikanın mülkiyet hakkı King Cert International Certification Ltd.'ye aittir ve istenildiğinde iade edilmelidir.



# MC STEEL

we try harder



[info@mcsteel.com.tr](mailto:info@mcsteel.com.tr)



+90 212 528 03 74  
+90 531 316 93 93



Head Office & Factory Address : Plastikçiler Org. San. Bölğ.  
13.Cad. No:3 Gebze / Kocaeli  
Stock Office Address : İkitelli OSB Tormak Industrial Site  
Block K No: 8 İstanbul / Türkiye



[www.mcsteel.com.tr](http://www.mcsteel.com.tr)