

# BENGTSSONS MASKIN AB

## PRODUCT CATALOG



---

# ABOUT US



## Bengtssons Maskin AB

Bengtssons Maskin was founded back in 1913, but it wasn't until the 1950s that we took a focus on mechanical transmissions. Over the years, we have expanded with many more products to have as wide a range as possible.

This applies not least within our core area, which are transmissions, high-pressure hydraulics and lifting. We have an assembly workshop in Arlöv where we physically adapt our products.

We target companies in industry in the Nordics and collaborate with manufacturing partners from all over the world. In addition, we focus on only cooperating with suppliers who are leaders in their field.

We are also part of the listed Indutrade. This is an international industrial group that sells and develops components, systems and services with high technical content.

# OUR HISTORY

The foundation for Bengtssons Maskin AB is laid when farmer Anders Bengtsson starts the company A. Bengtssons Maskinaffär AB on September 16, 1913.

The Tindberg family sells the company Bengtssons Maskin to the Skåne-based listed company Wilhelm Sonesson AB. Gunnar Tindberg remains as CEO of Bengtssons Maskin.

Gunnar Tindberg becomes head of the Dacke Komponent business unit, which includes Bengtssons Maskin, Carlsson & Möller and the Colly Group.

Bengtssons Maskin forms Tools after acquisition of sister company Kaj Mandorfs. Gunnar Tindberg retires but remains on Indutrade's board.

Bengtssons Maskin establishes its own purchasing company in Shanghai. Our own staff on site in China and close supplier contacts are a guarantee of high product quality.

New Tools is created after layoffs.

Bengtssons Maskin starts in Poland, Latvia, Lithuania.

**1913**

**1978**

**1984**

**2004**

**2011**

**2014**

**2022**

**1953**

**1982**

**1989**

**2005**

**2013**

**2017**

**2019**

Dispatcher E Tindberg and family acquire Bengtssons Maskin AB Dispatcher E Tindberg and family acquire Bengtssons Maskin AB.

AB Nils Dacke is formed from Wilhelm Sonesson AB and listed on the stock exchange. AB Nils Dacke initially consisted primarily of the companies Bengtssons Maskin, Carlsson & Möller and Sonesson Trading, which form the basis of today's Indutrade.

AB Nils Dacke is acquired by Industrivärden. The technology sales business Dacke Komponent is retained by Industrivärden and changed its name to Indutrade.

An acquisition in Denmark is carried out as part of Bengtssons Maskin's investment in expansion the collaboration with Danish manufacturing industry. Denmark also has a workshop specialized in the manufacture of short series of gears, pulleys and sprockets for Swedish customers as well.

On September 16, 2013, Bengtssons Maskin AB celebrates 100 years.

Nordic hydro tools - Anders Reitmaier is acquired

Bengtssons Maskin starts operations in Norway and Finland.

# CUSTOMER FOCUS

It is always you as the customer who is in focus at Bengtssons Maskin AB. We help you become more competitive in your market, which also makes your company more profitable.

All of our products can be customized based on what you request and our competent employees are with you all the way from start to finish.

Regardless of whether you want help already in the concept stage or later, we are at hand. Then we are with you right up to delivery.

In addition to the work that takes place in our workshop in Arlöv, we are also at your service with advice on site at your company. We can also help with dimensioning and assembly.



---

# INDUSTRIES

*We develop and manufacture mechanical components for several industries in the Nordic industry.*

**The automotive industry**

**The mining industry**

**Ergonomics**

**Agriculture**

**Nuclear power**

**Automation**

**Paper & Pulp**

**Forest industry**

**Steel industry**

**Shipbuilding industry**

**Material handling**

**Machine tools**

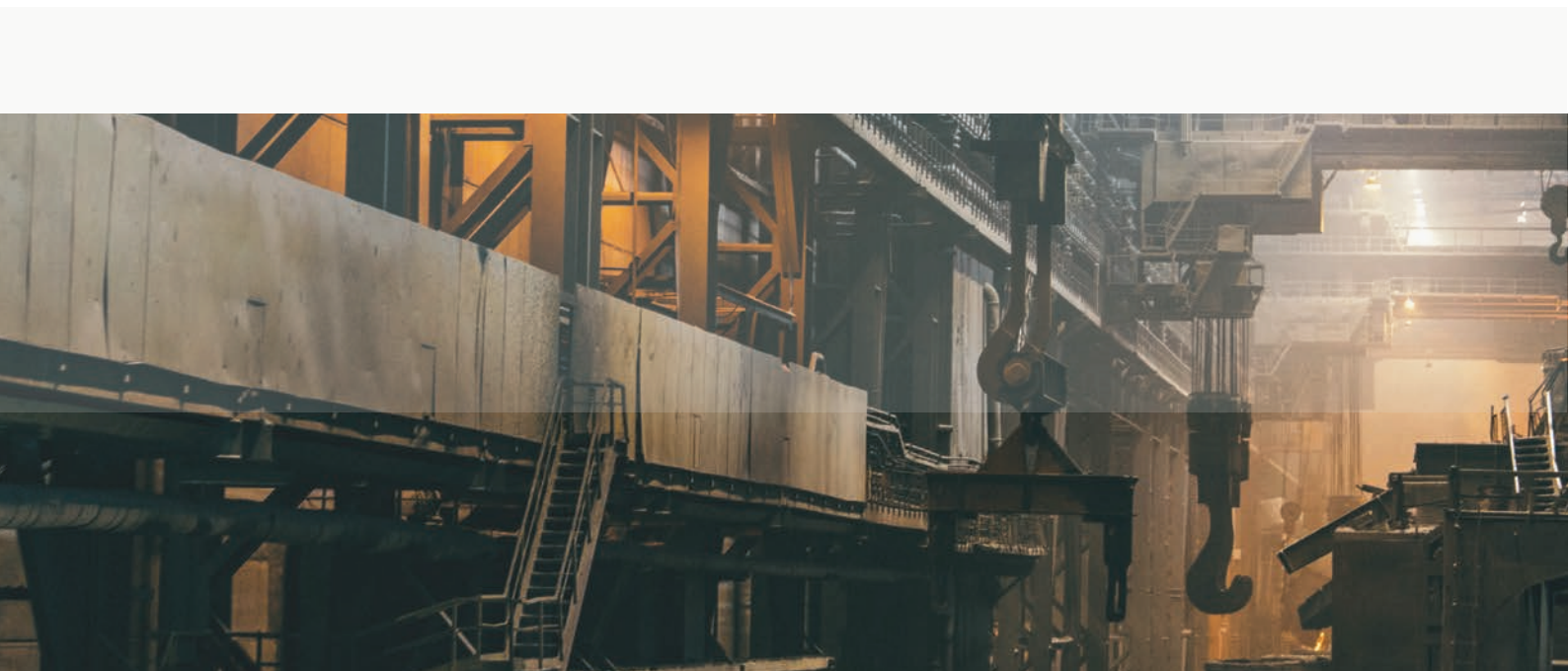
**Offshore**

**Medical technology**

**Infrastructure**

**Defense & Surveillance**

**Packaging industry**



# HEAVY DUTY

When we talk about Heavy Duty, our definition is products that are used in a tough environment where the requirements for strength and durability are very high. The forces and moments that the products bear are very high, often combined with tough weather conditions.



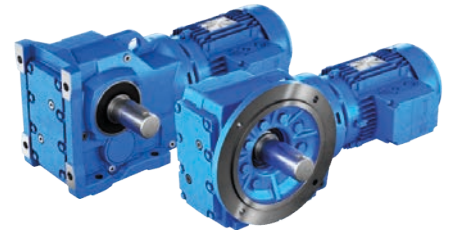
**WD SERIES**

Slew drive WD series has a high rotational speed, high gear ratio, rotational speed 1-3 rpm. Can be driven hydraulically and electrically.



**SP SERIES**

Slew drive SP series has a high rotational speed, high gear ratio, rotational speed 1-3 rpm.



**NEWS!**

**BEVEL HELICAL GEARMOTORS**

A compact design solution, fully interchangeable with a superior quality to fit all industrial applications improving companies' productivity.



**SLEWING RINGS**

Our slewing rings are designed to be able to handle high axial, radial and tilting moments, simultaneously. In addition, they can be combined with pinions (gears), planetary gears and motors,



**GEARBOXES**

With Rossi's product range we have the world's widest range of gears. They can be combined with other products from our range such as swing-rims, cardan shafts and clamping joints.



**CLAMPING ELEMENT**

The ETP principle provides a number of important advantages for the customer: compact design, quick assembly, easy to position, good rotation, does not damage the contact surfaces and is easy to dismantle.



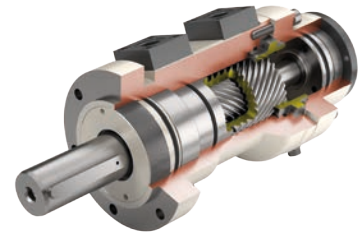
### LOCKING ASSEMBLIES

All locking assemblies are based on the principle of cones sliding against each other. The sliding, and thus the radial expansion, is achieved by means of a number of radial screws.



### GEAR COUPLINGS

Renk is one of the world's leading manufacturers of spur gear couplings. Only a limited range of standard couplings is presented on our website.



### HYDRAULIC TURNING DEVICES

Hydraulically, you can create a turning movement and the turning device itself can absorb higher external mechanical stresses. Perfect for tilt movements and various types of applications where you have access to hydraulics.



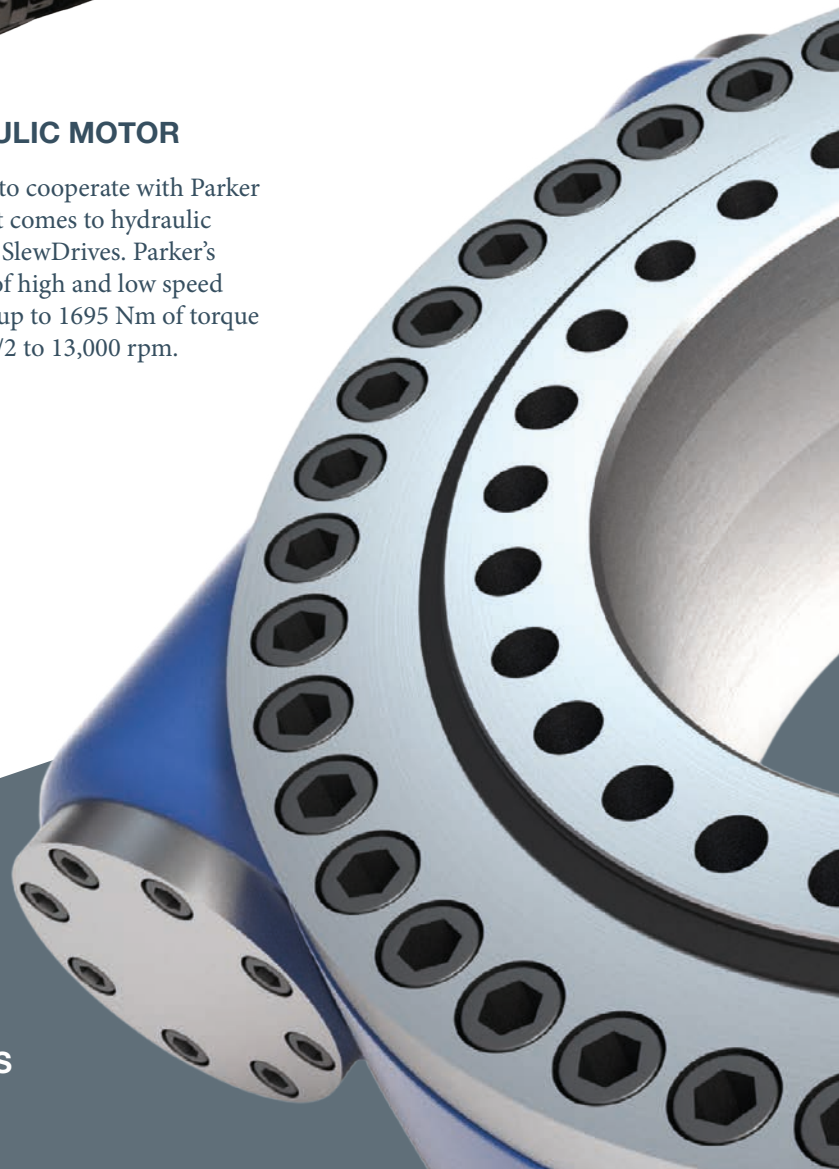
### CARDAN SHAFTS

Cardan shafts are in many cases one excellent alternative to shaft couplings when the distances between the shaft pins exceed approx. 500 mm. They are cost-effective and have a long service life.



### HYDRAULIC MOTOR

We have chosen to cooperate with Parker Hannifin when it comes to hydraulic operation of our SlewDrives. Parker's complete range of high and low speed engines provide up to 1695 Nm of torque at speeds from 1/2 to 13,000 rpm.



### SLEW DRIVES



## HYDRAULIC CYLINDERS

With capacities up to 1 tons and that the cylinders are available in more than 000 different designs, Enerpac provides several options for you as a customer!



## HYDRAULIC PUMPS

We offer Enerpac's manual, electric or pneumatic hydraulic pumps with different functions and oil volume.



## LIFT COMPONENTS

Looking for lifting components? We have chain in different classes: Class 10 VIP, Mini chain Class 10 and Class 12 ICE.



## TELFERS

German Liftket Star (El-) and Japanese Endo (Air Powered) has cable cars for those with a high level of reliability and long-term economy.



## MACHINE MOVEMENT

We sell both hydraulic jacks and transport trolleys – the natural choice when handling with heavy machinery.



## VACUUM LIFT

We have both self-generating vacuum lifts, which do not need an external power source, and lifts with electric vacuum pumps.



## SPRING BALANCER

Used to hang tools, hoses, actuators and other equipment. The spring balancer are there to reduce the weight load on the person performing the work.



## TORQUE TOOL

The market's widest range of tools for torque tightening and screw tensioning, manual and hydraulic, electric, air-powered and battery-powered tools.



## LEVER- AND CHAIN HOISTS

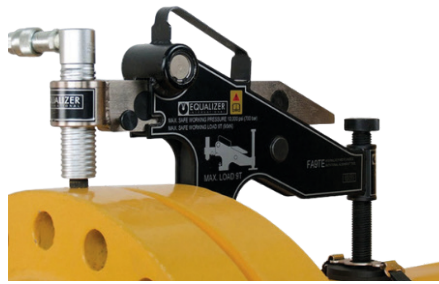
Nitchi - the original, lever and quick-lift block that for many is the obvious choice. Since the 60s, we have sold lifting blocks.





## PRESSES

Enerpac hydraulic presses are available in a variety of standard capacities and configurations. Press capacities range from 10 tons to 200 tons.



## FLANGE TOOL

Best flanging tools on the market! We can now proudly present the entire range from Equalizer.



## FIXTURE

A complete range of well-designed products used to provide powerful clamping and positioning power to every type of manufacturing process.



## PULLER

A complete range of pullers with the widest range of sizes, capacities and styles. Whether your application requires a mechanical or hydraulic puller, these products can be customized to your requirements.



## OTHER LIFTINGS

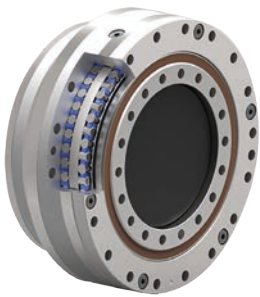
On our website we have gathered other products within lifting. You will find various hand winches, slewing cranes, beam trailers and lifting devices.



We are the Nordic region's largest Enerpac distributor and is authorized service workshop at all stages.

# PRECISION

When we talk about precision, our definition is products with very high mechanical accuracy and efficiency. The products are manufactured by leading companies in their segment and examples of these companies are ETP, Spinea and Nexen.



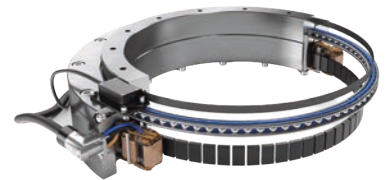
## CYCLOID GEARS

Spinea Twinspin backlash-free cycloid gears represent a completely new generation of transmission solutions with the highest precision.



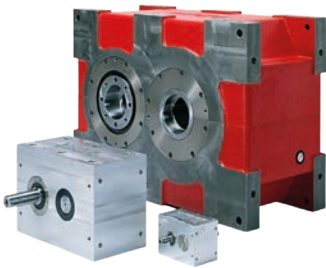
## PLANETARY GEARS

Our partner Reckon® offers 2 planetary gear series and each of these planetary gears has an in-line and a right angle configuration.



## DIRECT DRIVE

Our supplier Franke's direct drive bearing units are suitable for applications where high performance and low space requirements are important criteria.



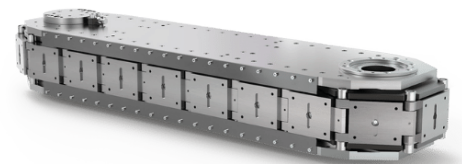
## INDEXING GEARS

Indexing gears and indexing tables are simple, proven and reliable machine elements. Bettinelli is a world-leading manufacturer from Italy.



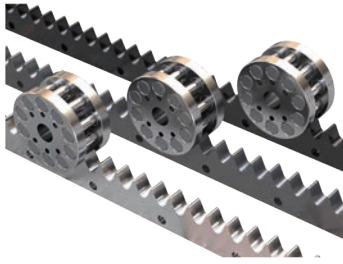
## LINEAR GUIDES

Franke linear guides are a system where quality and a high level of technology are hallmarks. Rails and carriages are manufactured in aluminum for minimum weight and maximum acceleration.



## LINEAR CONVEYORS

The industry's highest accuracy and repeatability for automated assembly and manufacturing machines. They are specifically used on machines that require stability, precision, high speeds and low maintenance.



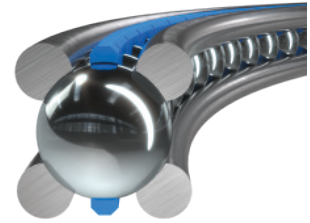
### RPS SYSTEM

The Nexen RPS system for linear and rotary precision movements. The Nexen RPS system offers unique accuracy and repeatability - with absolutely no backlash.



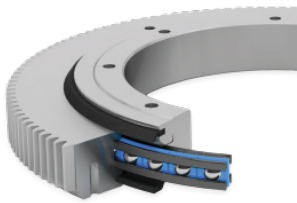
### HYDRAULIC CLAMPING ELEMENTS

The ETP principle provides a number of important advantages for the customer: compact design, quick assembly, easy to position, good rotation, does not damage the contact surfaces and is easy to dismantle.



### WIDE RACE BEARINGS

Wire race bearings are a unique construction with ring-shaped raceways made of steel. They are intended for installation directly in the basic structure, which thus replaces the bearing rings in a conventional bearing.



### BEARING UNITS

Slewing bearing is a wire bearing that is fitted with an inner and outer ring. The advantage of this system is i.a. that the outer and inner ring can be made of materials other than steel – eg aluminum for light weight.

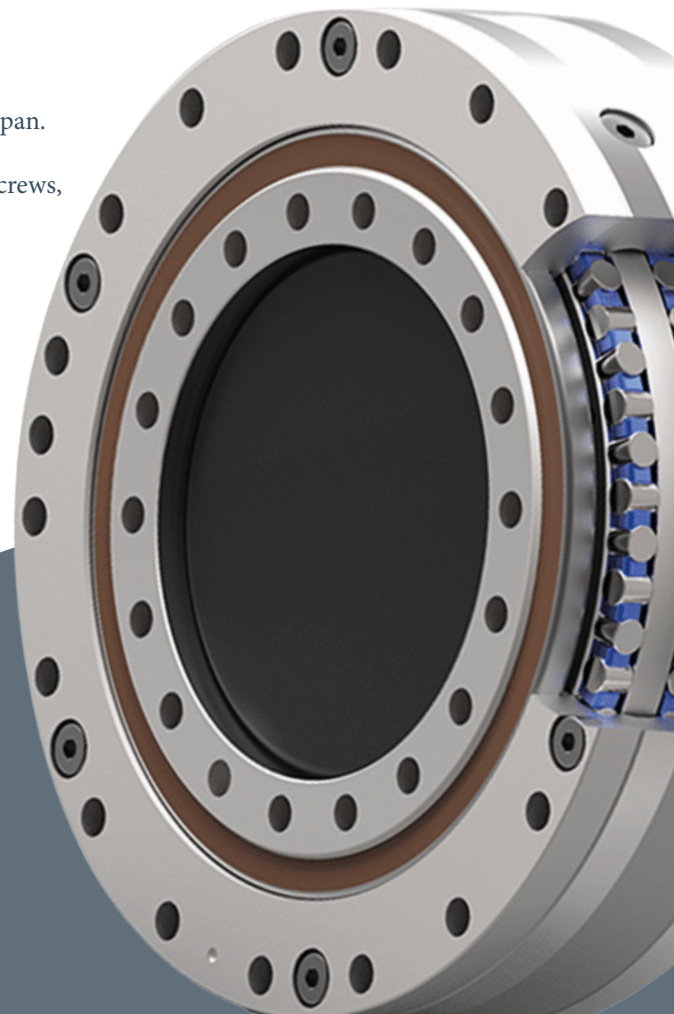


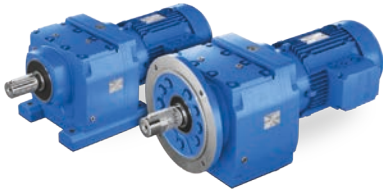
### SPECIAL SCREWS

We sell a very large range of special screws from NBK in Japan. The range includes screws for vacuum applications, plastic screws, miniature screws etc.

*View more precision products on next page >*

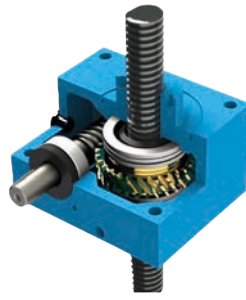
Our popular cycloid gears -  
Spinea Twinspin backlash-free.





## GEAR MOTORS

With Rossi's product range, we have the world's widest range of gears. The gears from Rossi can be combined with other products from our range, such as slewing rings, cardan shafts and clamping joints.



## HYDRAULIC JACKS

Hydraulic jacks from UNIMEK SpA are easy to use, reliable and require a minimum of maintenance. This makes them a very useful machine element in many different contexts.



## FRIKTIONSFÖRBAND

All mechanical friction joints are based on the principle of cones sliding against each other. The sliding, and thus the radial expansion, is achieved by means of a number of radial screws.



## PRECISION CHAINS

Here you will find roller chains of all types and sizes. Our partner IWIS also produces roller chains with brackets and special chains with group chains, leaf chains, conveyor chains and many other models.



## ROLLER CHAINS

A wide range of standard chains that are supplemented with a number of customer-unique chains. Material selection and function can be varied endlessly and gives us great opportunities to find effective solutions for most applications.



## MINIATURE COUPLINGS

For encoders, servo motors and stepper motors - we have the right coupling for your applications. The range includes a very large selection of couplings in various designs, all with their unique properties.



## CONVEYOR CHAINS AND MODULAR BELTS

Regina Catena plastic and steel chains and modular belts are a very extensive product range. For more information, visit our website.



---

# SOURCING

## STRATEGY & COOPERATION

Bengtssons Maskin collaborates with its partners at a strategic level in order to maintain an efficient purchasing process. We have extensive experience in sourcing and have a close network with our partners in Asia.

Together with our partners, we strive for a long-term and strategic collaboration. We also only work with partners and manufacturers that we know from experience can deliver quality and safe products.

As with our partners, we also aim for a long and close relationship with our customers. As a customer with us, we take care the handling of finding the right one the manufacturer that suits your wishes.

We are with you all the way – from prototype for storage. With a warehouse in Sweden, we can also guarantee a just-in-time delivery.

## WHAT WE OFFER

**TURNING**

**GEAR MANUFACTURING**

**MILLING**

**CASTING**

# SUPPLIERS





---

# CONTACT US

## GOT QUESTIONS?

Call +46 40 680 73 00 or email us at [info@bengtssons-maskin.se](mailto:info@bengtssons-maskin.se)

Order questions are sent to [order@bengtssons-maskin.se](mailto:order@bengtssons-maskin.se).

Quality questions are sent to [quality@bengtssons-maskin.se](mailto:quality@bengtssons-maskin.se).

Are you looking for someone specific?

Go to our website and get all the contact details for our whole team.

## FOLLOW US ON SOCIAL MEDIA

Don't forget to follow us on LinkedIn and Facebook - @Bengtssons Maskin.

Weekly updates and monthly newsletter.

# GO FOR KNOWLEDGE!

**Adress:** Företagsvägen 14, Arlöv

**Website:** [www.bengtssons-maskin.se](http://www.bengtssons-maskin.se)

**Telephone:** +46 40 680 73 00

