



TELECARD

www.telecard.com.ua

**MOBILE COMPLEXES
PRODUCED BY
LLC «TELECARD-PRILAD»**



Ukraine, 65104, Odesa
Nebesnoi Sotni ave., 105

+38 048 705 15 15
office@telecard.com.ua



COMMAND VEHICLES
page 3



MOBILE COMMAND POSTS
page 10



INTEGRATED COMMUNICATION POST
page 22



CONTAINER BASED SOLUTIONS
page 23



MOBILE MEDICAL COMPLEXS
page 26



FIELD COMPLEXES
page 31

COMMAND VEHICLES



COMMAND VEHICLES

Command vehicles are a combat armored vehicles intended for organizing troop's command and for organizing of communications on the tactical command level on the move and stationary positions, standalone or as part of communication center. Every command vehicle is equipped by air filtration unit, air conditioning, a heater and an uninterruptible power system.

The command vehicles are equipped with communication and

automation equipment, personal computers that allows commander to control subordinate units, entering, displaying, registering, processing, inputting and outputting of text and video information, store and maintain of databases, as well as determine vehicle geolocation and automatic displaying of coordinates at electronic map.

Our company has mastered the mass production of command vehicles on various chassis types .



COMMAND VEHICLE K-1450



COMMAND VEHICLE K-1450-01



COMMAND VEHICLE K-1450-02



COMMAND VEHICLE K-1450-03



COMMAND VEHICLES K-1450-05 and K-1450-06



MOBILE COMMAND POSTS



MOBILE CONTROL CENTER FOR EMERGENCY SERVICES – OPTION 1

Mobile control center for emergency services allows to provide coordination of search-and-rescue mission of subordinate units during rescue operation, as close as possible to disaster area.

Due to the modular design, the mobile control center for emergency services allows to speedy move to the disaster area and

quickly deploy in the field a fully operated control center for 22 workplaces equipped by radio, video and satellite communications, LAN and data input-output equipment.

The presence of amenity premises allows organizing round-the-clock duty of the operational staff.



External view



Communication post

Meeting area

Amenity premises



MOBILE CONTROL CENTER FOR EMERGENCY SERVICES – OPTION 2



External view



Internal equipment



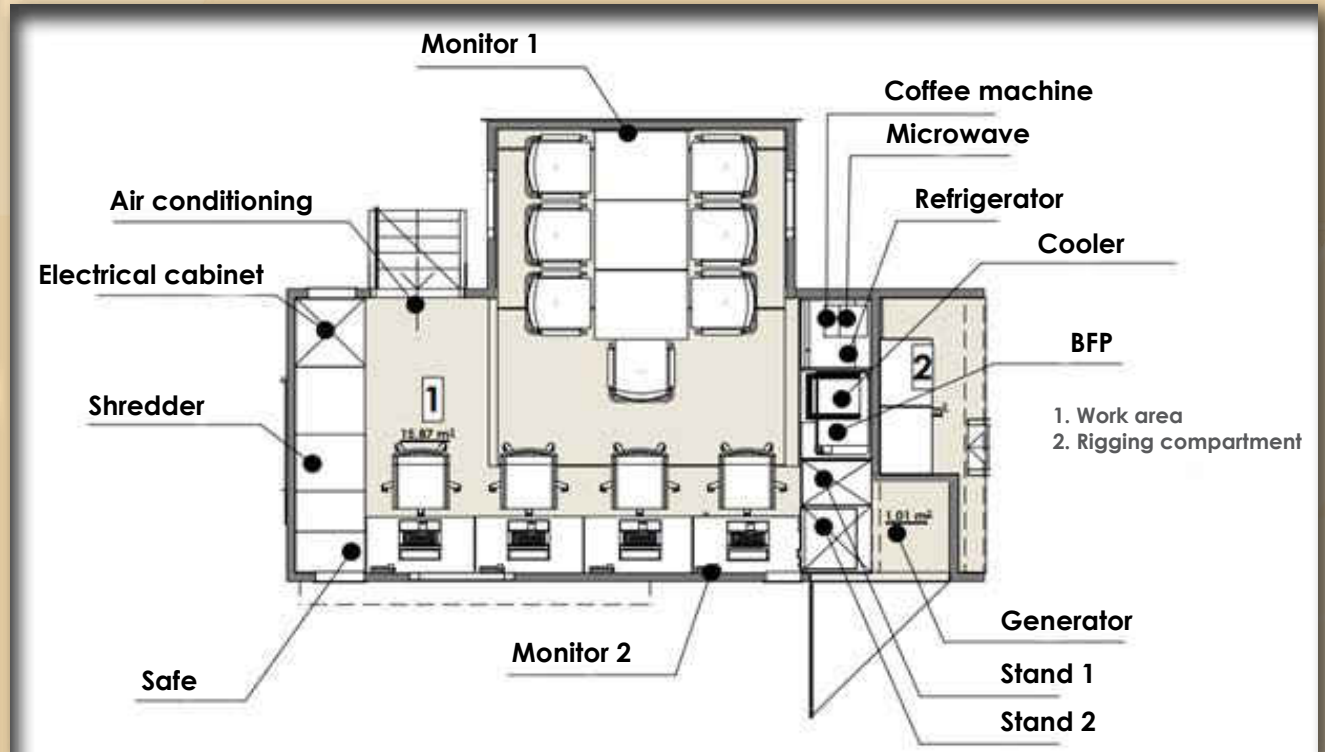
MOBILE CONTROL POINT OF THE EMERGENCY SERVICES

The mobile control point is designed to ensure the autonomous operation of the management of works on liquidation of the consequences of an emergency situation directly in the city of an emergency event.

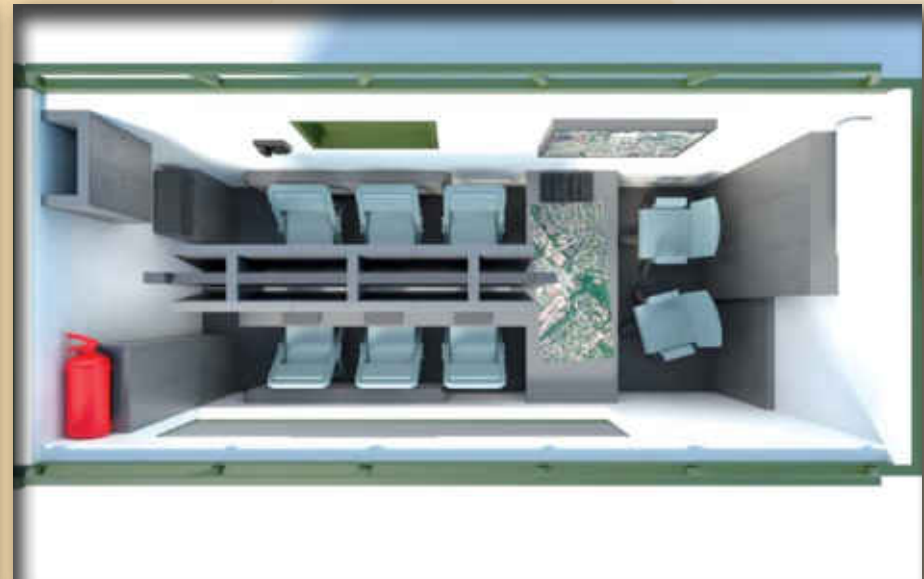




PLANNING OF MOBILE CONTROL POINT



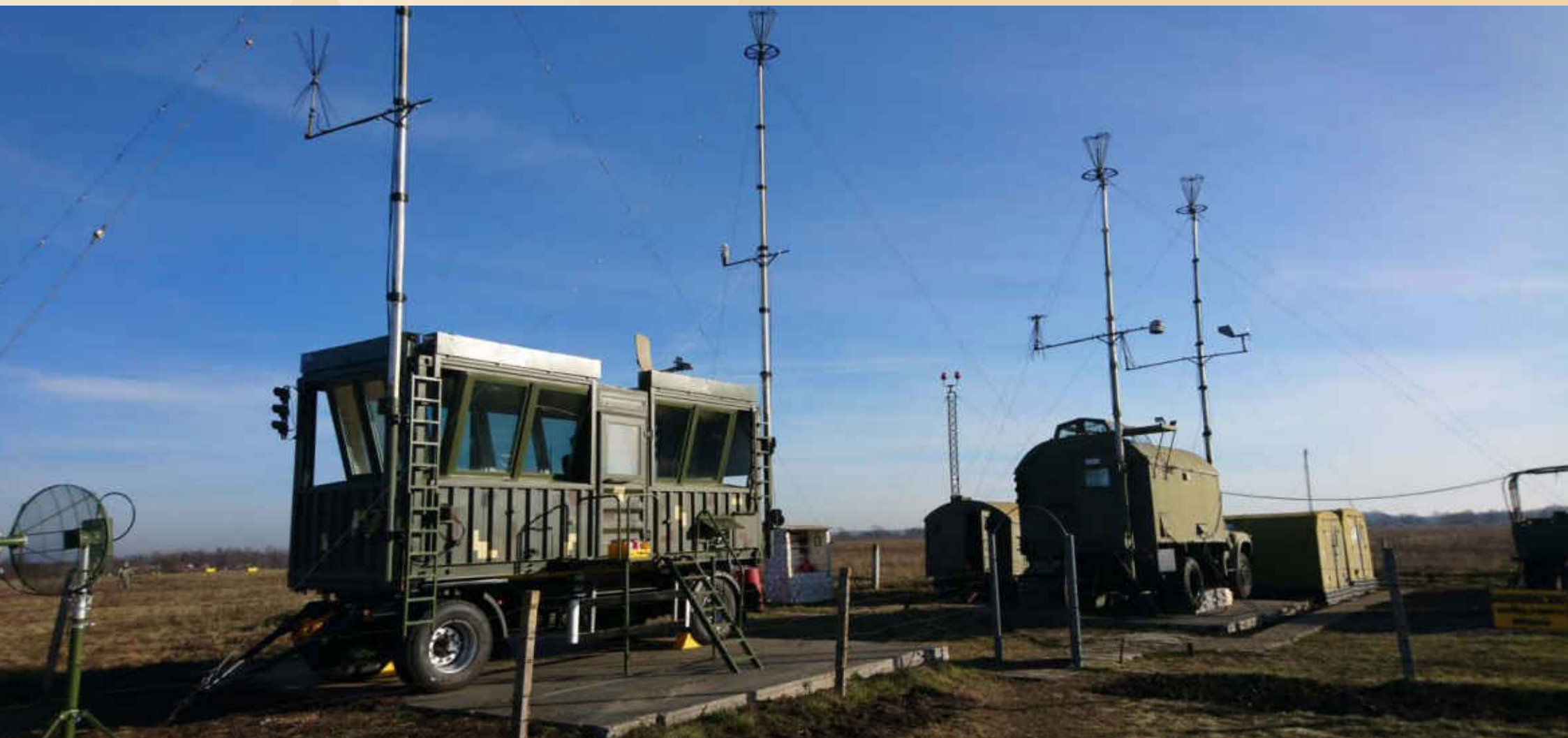
ARMORED FIELD COMMAND POST



STARTING COMMAND POST (SKP-11P)

Starting command post (SKP-11P) is the command post for air traffic control, mainly at field (temporary) aerodromes, as well as it can be also used at stationary aerodromes as a backup or main post of air traffic control. CKP-11P has radio, navigation, meteorological and telephone equipment, antennas and special lighting equipment

to ensure aircraft flight control. The post includes a heater and air conditioner as well as backup uninterruptible power supplies to ensure autonomous operation. Flight supervisor, aviation observer, chrono operator, radio-mechanic, meteorological observer work-places are inside the cabin.



External view of SKP-11P



Inside equipment of SKP-11P



STARTING COMMAND POST (SKP-11M)

SKP-11M is made on the basis of a container, which can be installed on any three-axle heavy-duty truck with a carrying capacity of at least 8 tons.

To ensure the autonomous operation of the flight commander, assistant flight commander, on-duty navigator and radio mechanic, as well as to ensure the control of aircraft flights, the SKP-11M in-

cludes radio technical, navigational, meteorological and telephone equipment, antennas and special lighting equipment.

The SKP-11M set also includes an air conditioner, a heater, and a backup source of uninterrupted power supply.

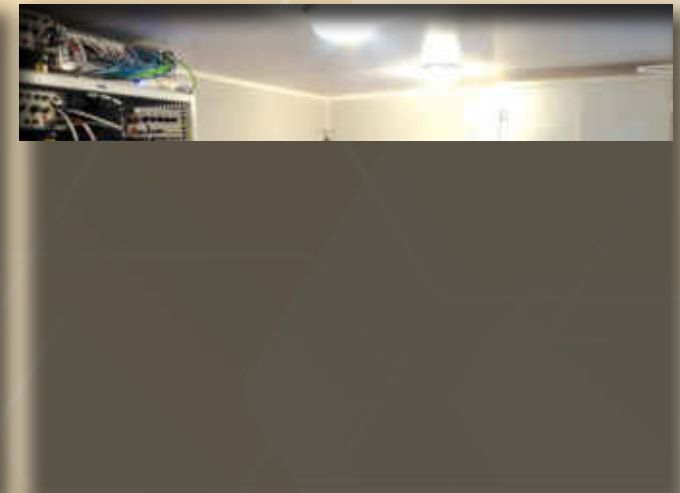
Communication equipment SKP-11M is structurally made as separate devices that are fixed in a rack on the walls of the body, or mounted on workplaces.



External view of SKP-11M



Inside equipment of SKP-11M



INTEGRATED COMMUNICATION POST (ICP)

ICP is designed to provide various types of classified and non-classified communications for military commanding officers. Communication is provided through radio and wired channels on mobile communication centers of command posts of Armed Forces by their automatic switching and routing.

ICP is also intended for the deployment as part of field communication centers of command posts of Armed Forces.

ICP is used for:

deployment of subscriber telephone networks (wired communication) of non-classified and classified communication at control and command centers, including using IP-based data transmission system.

List of equipment is customer-specified that allows to produce different versions of the Integrated communication posts.



CONTAINER BASED SOLUTIONS



CONTAINER FOR INTEGRATED-COMMUNICATION FACILITIES (SHELTER) K-01 and K-01.01

The company specializes in the design and manufacture of communication equipment room, based on standard 20-ft containers.

List of equipment is customer-specified that allows to produce different versions of the SHELTER K-01.



WEAPON STORAGE CONTAINER

The weapon storage container is designed to ensure the storage of weapons in the field condition. The container is made on the ba-

sis of a standard 20-foot sea container, by equipping it with storage pyramids (cabinets), a lighting system, fire and security alarms.



MOBILE MEDICAL AID COMPLEXES

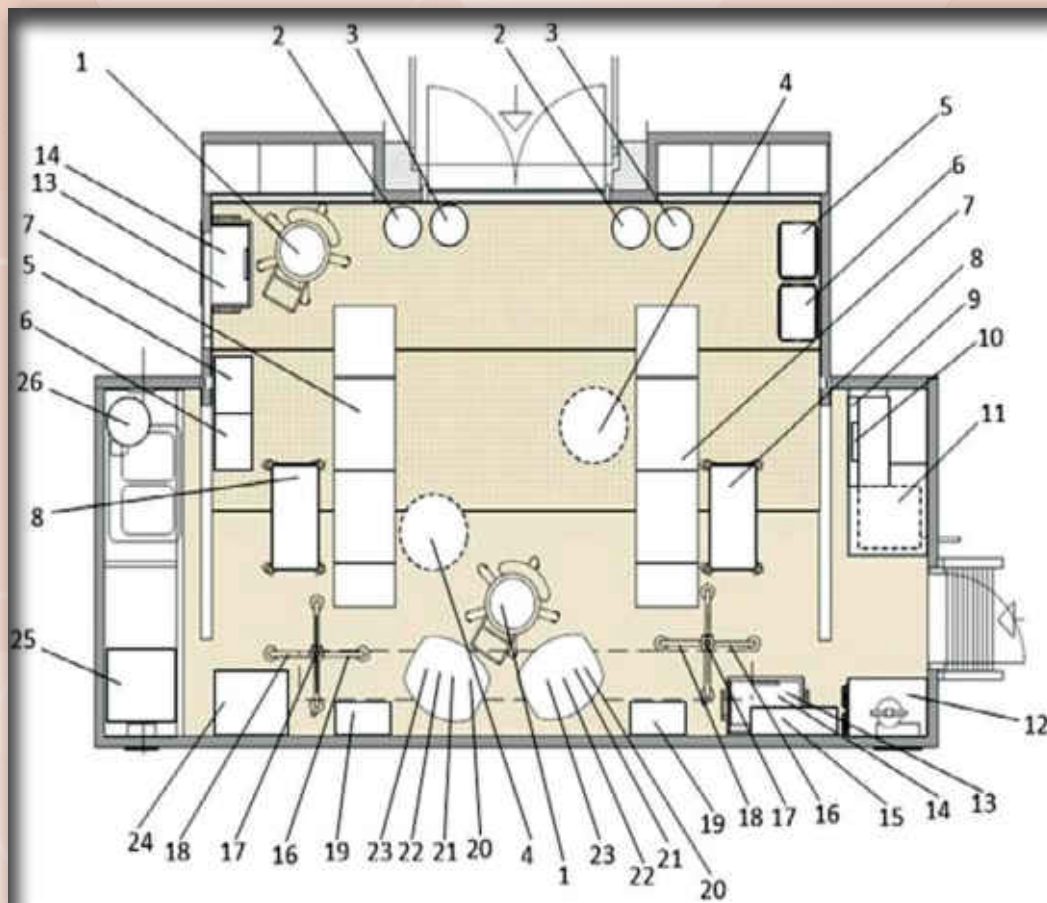


MOBILE SURGICAL COMPLEX

The mobile surgical complex is designed for urgent operations for military personnel directly in area of warfare as well as in the rear area in the absence of stationary medical facilities. The mobile

surgical complex has all main and auxiliary equipment, which are necessary for high-quality emergency care including surgical operations.

MAJOR COMPONENTS OF MOBILE SURGICAL COMPLEX



1 - Adjustable screw chair with backrest, SVPS
 2 - Waste bin holder. PT-1
 3 - Sterilization box holder. PB
 4 - Shadow less surgical light. PL2540-002 D4
 5 - «A»-class waste bin
 6 - «B»-class waste bin
 7 - Surgery table MT-300
 8 - X-ray film viewer
 9 - Anesthetist table CA
 10 - Refrigerator
 11 - Ventilation
 12 - Oxygen concentrator «Breeze-20» (placed under the table)
 13 - Power supply cabinet
 14 - Special instrument table CIC
 15 - High Frequency Surgical Equipment EHVCh 120 U «Nadiya-4»
 16 - Air sterilizer UVC FAN-15
 17 - Heater of infusion solution «Hawk-fw1»

18 - Mobile stand for long-term infusions «ShDV-P»
 19 - Syringe infusion pump «HK-400111»
 20 - Electrical surgical suction apparatus 7 A 23D;
 21 - Movable section of the medical console
 22 - Artificial lung ventilation unit «Yuvent-T» (placed on the movable section)
 23 - Patient monitor «Aurora 125» (placed on the movable section)
 24 - Defibrillator-monitor «Cardio Aid 360B» (placed on the movable section)
 25 - Medical console (placed on the ceiling)
 26 - Oxygen concentrator «Telecard-10»
 27 - Sterilizer «GP-80»
 28 - Water heater

External view



Inside equipment

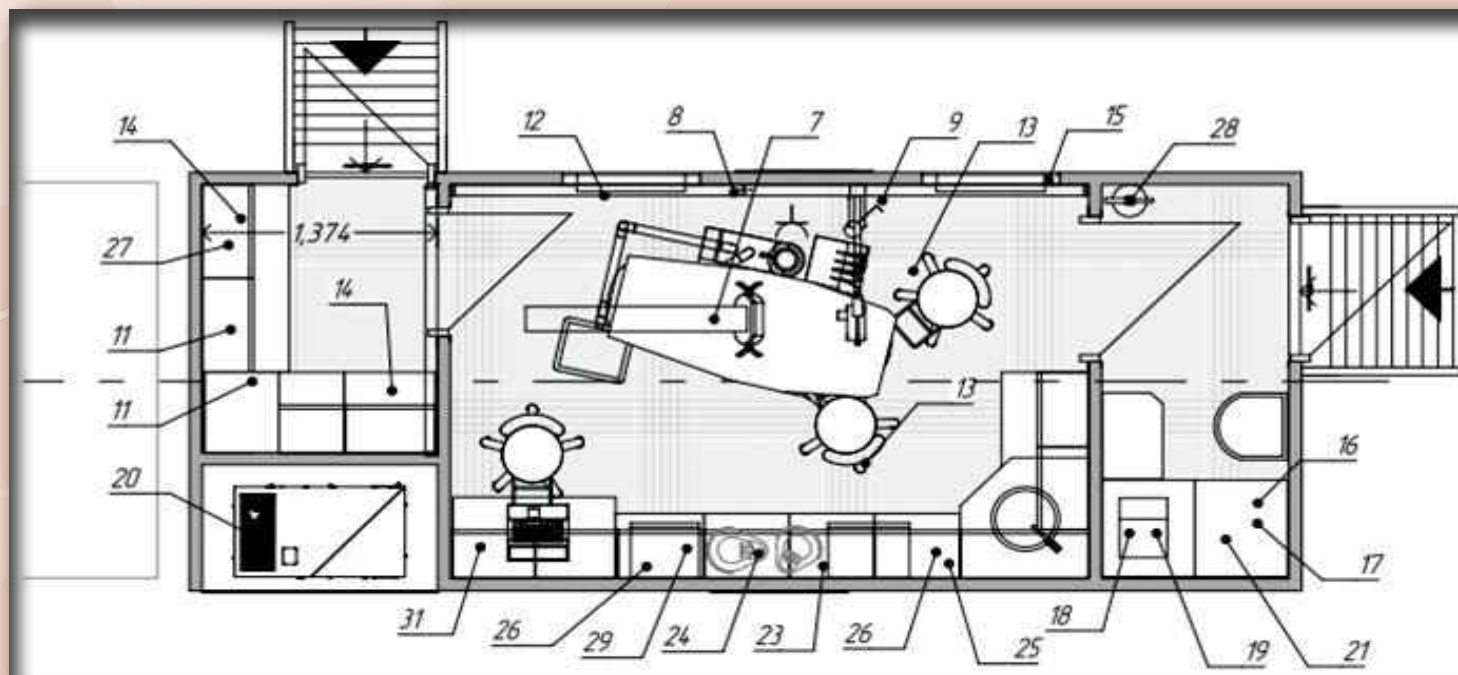


MOBILE DENTAL COMPLEX (PROJECT)

The mobile dental complex is designed to provide dental care for military personnel directly in area of warfare as well as in the rear in the absence stationary medical facilities.

The mobile dental complex has all main and auxiliary units necessary for high-quality dental care.

MAJOR COMPONENTS OF MOBILE DENTAL ROOM



Components symbols:

7 - dental treatment unit;
 8 - dental illuminator;
 9 - dental X-ray unit;
 10 - desk lamp;
 11 - desk heater;

12 - bactericidal recirculator;
 13 - chair for medical personnel;
 14 - crew members clothes and belongings wardrobe;
 15 - window shutters;

16 - chair for medical patient;
 17 - water tank 88 liters;
 18 - greywater tank 88 liters;
 19 - fresh water tank 32 liters;

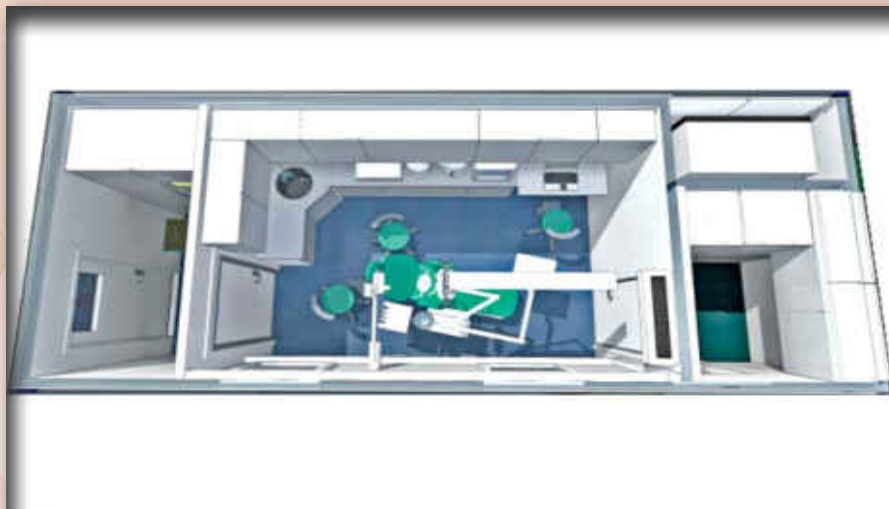
20 - electric generator;
 21 - compressor;
 22 - water distiller;
 23 - autoclave;
 24 - sterilizer;
 25 - hanging cabinet;

26 - hanging cabinet;
 27 - air conditioner;
 28 - fire extinguisher;
 29 - UV chamber;
 30 - hanging cabinet;
 31 - modular linear tabletop.

External view



Inside equipment



PROJECT OF FIELD COMPLEXES

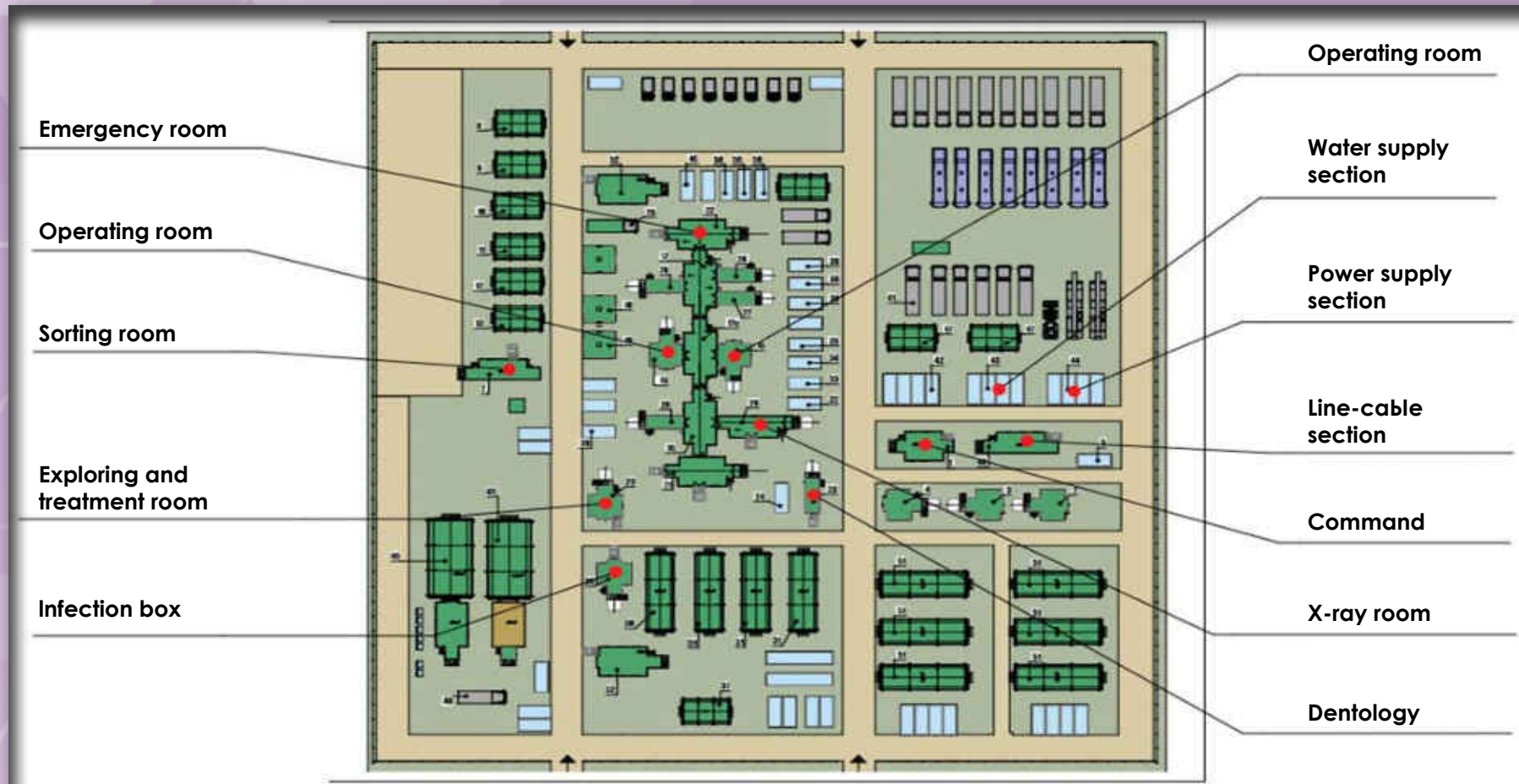


MOBILE MILITARY HOSPITAL

The mobile military hospital is designed for to provide medical (inpatient treatment) assistance to military personnel directly in area of warfare as well as in the rear in the absence stationary medical facilities.

The mobile military hospital has all main and auxiliary units necessary for first response emergency care.

MAJOR COMPONENTS OF MOBILE MILITARY HOSPITAL



Emergency room



Operating room



X-ray room



Exploring and treatment room



Command center



Line-cable section



Emergency room



Power supply section



Accommodation and service modules

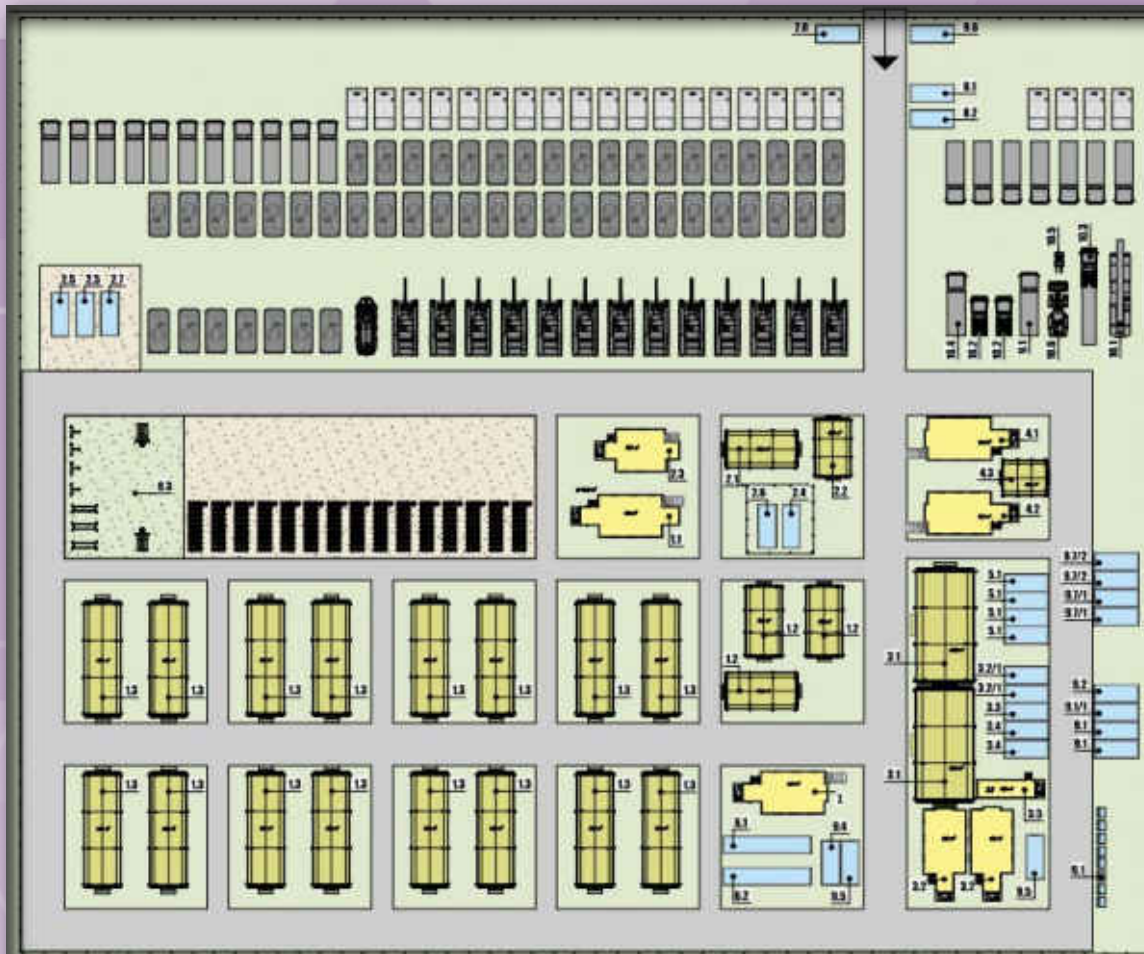


MOBILE FIELD CAMP

The mobile field camp is a temporary military settlement with closed cycle life support system, designed to quick building of infrastructure for the long-term or short-term deployment of various

purposes military units in areas of permanent or temporary concentration on undeveloped locations.

MAJOR COMPONENTS OF MOBILE FIELD CAMP



1. Residential facilities (18):
 - 1.1 Battalion commander
 - 1.2 Officer
 - 1.3 Military personnel
2. Special (8):
 - 2.1 Headquarters
 - 2.2 Duty staff
 - 2.3 Communications center
 - 2.4 Arms room
 - 2.5 Munition
 - 2.6 Machine guns, grenade launchers
 - 2.7 Cleaning of weapon
 - 2.8 Guard gate
3. Meals (14-16):
 - 3.1 Dining room (250 seats)
 - *3.2 Kitchen (2 workshops) + dishing up
 - 3.2.1 Kitchens storeroom
 - 3.3 Refrigerator (1 +1.3-4 m)
 - 3.4 Dry Store.
 - *3.5 Sanitary-hygiene section of kitchen (wc/show)
4. Medical support (3):
 - *4.1 First-aid post
 - *4.2 Sick quarters(10 s.m + treatment)
 - 4.3 Sick-room (2X10 м, separated entrances, treatment)
5. Storage (4)
 - 5.1 Equipment and facilities depots
6. Sanitary-hygiene service
 - 6.1 Showers
 - 6.2 Washrooms/toilets (18)
 - 6.3 Water heating, water storage
 - 6.4 Grey water system, paper filters
 - *7. Washing machine rooms1
8. Techn park (KTP)
 - 8.1 KTP module (4)
 - 8.2 Refuelingmodule
 - 8.3 Site (50 units)
9. Technical support
 - 9.1 Electricity power generation
 - *9.1.1 Transformer 10/04 KV
 - 9.2 Repairing workshop
 - 9.3 Garbage truck + waste bins
 - 9.4 Water heating, water storage
 - 9.5 Grey water system, paper filters
 - 9.6 Perimeter, gates, securitysurveillance equipmentand warning (clause 2.8)
 - 9.7 Heating:
 - 9.7.1. Solid-fuelboiler station
 - 9.7.2 Heat pumps P/V, P/P
- 10 Technique for deploying and maintaining camp:
 - 10.1 Truck crane6X6 16 m
 - 10.2 Bolster-body truck6X4
 - 10.3 Bolster-body truck withtravelling carriage12,5 m
 - 10.4 Chassis KRAz (MFz) with a multi-lift for 1C
 - 10.5 Front loader
 - 10.6 Small emplacement excavator

Residential facilities



Headquarters module



Communications center



Kitchen



Medical aid post



Washing room



Refueling post



Electricity power supply facilities



Water supply facilities





TELECARD

www.telecard.com.ua



Ukraine, 65104, Odesa
Nebesnoi Sotni ave., 105
38 048 705 15 15
38 048 711 60 98
e-mail: office@telecard.com