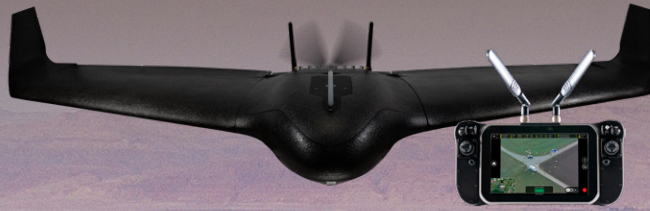


# eBee

## VISION



Low acoustic signature



Low visibility in the sky



**Light weight**  
1.6 kg / 3.5 lbs



**Portable and operable**  
by one person



**Deployment in**  
3 minutes



**Up to 90 minutes**  
flight time



**HD**  
live video

Full high definition



**20 km**  
range

Live video capture  
from up to 20 km / 12 mi



**32x**  
RGB  
zoom

RGB camera with  
32x digital zoom



**5x**  
Thermal  
zoom

FLIR thermal camera  
with 5x digital zoom

## High-accuracy ISR solution

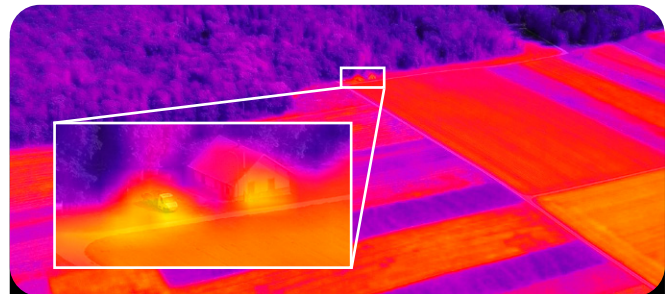
The RGB and thermal eBee VISION drone operates in challenging environments to provide a high-accuracy mobile solution for intelligence, reconnaissance and surveillance (ISR).

Share video feeds on rapidly-changing environments to inform strategy and act with precision. eBee VISION is a Swiss-made solution that is easy to transport, hand-launch and maintain by a single operator in the field.



### RGB camera with 32x zoom

Detect and recognize objects of interest from a safe distance using stabilized 21MP dual RGB sensor. Use real-time RGB and thermal blending to optimize visibility. Simultaneously capture, view and record HD video and imagery.



### Thermal camera with 5x zoom

Easily detect small targets at long distances or undercover using a fusion of thermal and RGB imaging, enabled by a 640x512 FLIR Boson micro-bolometer with 5x digital zoom.



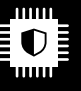
### Cursor-on-Target (CoT)

Locate targets using center of image coordinates, available on both RGB and thermal views, with 50 m / 164 ft of circular error at an undetectable distance from the target. Share the location immediately as latitude longitude or MGRS coordinates.



### Automated and assisted manual flight operations

Seamlessly adapt pre-planned flight missions during the flight to follow the targets discovered. Easy to use Point Of Interest (POI) mode for surveillance and Go To functionality to quickly focus observation on target of interest on the map.

 <b>Validated as cyber-secure</b>	 <b>Radio data link encryption AES-256</b>	 <b>Drone log file suppression</b>	 <b>Protected by secure element</b>	 <b>Silent radio mission</b>	 <b>Encrypted SD card</b>
-----------------------------------------------------------------------------------------------------------------------	--------------------------------------------------------------------------------------------------------------------------------	------------------------------------------------------------------------------------------------------------------------	-------------------------------------------------------------------------------------------------------------------------	--------------------------------------------------------------------------------------------------------------------	-----------------------------------------------------------------------------------------------------------------



### Remote controller & radio

Drop-resistant remote controller designed for challenging environments. All controls optimised for ease of use and switching between drone and sensor operations. 7" sunlight viewable screen and changeable radio-module.

### Drone specifications

Wingspan	127 cm / 50 in
Material	Expanded Polypropylene (EPP)
Weight	1.6 kg / 3.5 lbs
Transport case	Lightweight backpack or available hardcase

### Flight performance

Cruise speed	15 m/s (54 km/h or 33 mph)
Max speed	25 m/s (90 km/h or 55 mph)
Max wind resistance	14 m/s (50 km/h or 31 mph)
Max flight time	90 minutes
Service temperature	-10°C, +49°C / 14°F, 120°F
Rain resistance	Able to operate in light rain

### Remote controller specifications

Screen	7" sunlight viewable screen with rain mode and glove touch
Video	Continuous HD video feed from RGB and thermal sensors including blending
Fight application	Easy to use flight application enabling single user simultaneous flight and sensor operation
Controls	Customizable joysticks and buttons to optimize flight and sensor operations
Battery	7 hours battery life with warm-swap capability
IP rating	IP65

### RGB sensor specifications

Sensor	Dual-sensor: 1/2.4"
Resolution	5344 x 4016
Focal length	4mm / 16mm
Field of view	70°-2.4°
ISO range	100-3200
Zoom	32x digital
Video resolution	4K / FHD / HD
Video format	MP4 (H.264)

### Thermal sensor specifications

Sensor	FLIR BOSON
Resolution	640 x 512
Zoom	5x digital
Video resolution	1280 x 720
Video format	MP4 (H.264)