



INSTALLING
RELIABILITY



BUNDESWEHR/MARCO DOROW

www.ndsatcom.com

TACTICAL- COMMS-ON-THE-MOVE

FAST, FIRST-RATE SATELLITE
COMMUNICATIONS
EVERYWHERE

The latest ND SATCOM Satellite Communication-on-the-Move (SOTM) system is the right solution for your critical high-security missions. You will benefit from our years-long experience as a system integrator in tactical communication, complete with anchor station infrastructure and integrated logistic support during the entire “real time” usage period. Thus it is possible to transmit live video footage from the first second the tactical vehicles are on-the-Move. No dish needs to be deployed and adjusted. The satellite link will be re-established within milliseconds of any interruption. Using a bonded cellular encoder you can further transmit via satellite and cellular network, also in parallel. This means maximum flexibility at less cost. The tactical vehicle features a fully-equipped office where it is possible to send and receive encrypted mission-critical information, such as live situation pictures, FTP files or other data, and make VoIP calls – all in parallel as needed – to ensure fast network-centric warfare at any time.

The location of tactical vehicle(s) is shown on a map. Headquarters can thus direct the closest one to the critical mission site. If more than one tactical vehicle is in the field, all traffic can be governed within a bandwidth pool. Communication can occur in all directions, including between tactical vehicles or vessels – with a single hop. Headquarters can view online all relevant status indicators of the tactical vehicles plus sensor and video data. This ND SATCOM military SOTM system is leading a new era of tactical communication.

In the military and defence arena, SOTM use on land and sea is in high demand to support critical reconnaissance and operations and to allow the principles of network-centric warfare to be optimally applied. In general, a network is deployed as a mixture of terminal types of various sizes and levels of mobility and security. All the terminals communicate within a common network, sharing the satellite link resources governed by one SKYWAN master station. For necessary redundancy a geographical Backup-Master is available. Our Tactical Comms-on-the-Move terminals are capable of communicating with larger stations that could represent anchor stations or tactical injection points. Mesh connections between Tactical Comms-on-the-Move terminals guarantee clear voice and low latency. The entire SKYWAN network can be protected against eavesdropping using AES-256 link encryption and external encryption devices.

KEY FEATURES

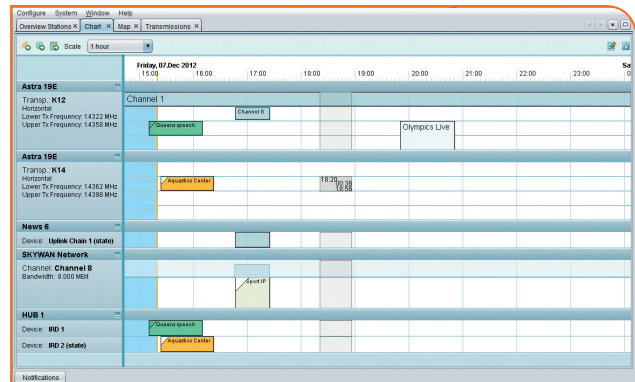
- Fastest link re-acquisition time on the market
- Secure remote control of transmission equipment
- No skilled operator required in vehicle
- Link encryption
- Secure and robust waveform



SOTM ON SEA

SOTM FLEET MANAGER

Quick transponder slot booking of bandwidth is easily done via a drag and drop GUI (graphical user interface). Scheduled transmissions are shown on a timescale with relevant link information. The terminal location of each tactical vehicle shows up on an interactive map. The SOTM Fleet Manager shows all link usage and information from vehicles/vessels. IP and DVB-S2 bookings in the GUI may use the same bandwidth pool for DVB-S2 or SKYWAN carriers to transport all IP data.



SOTM FLEET MANAGER (SFM)

SOTM MODEM

SKYWAN 5G with its SOTM enhancements, combined with a tested and suitably selected on-the-Move land-mobile or maritime antenna (from Gilat, ThinKom, General Dynamics, Cobham, LCDDC, EPAK, or others), comprise a perfectly tailored Tactical-Comms-on-the-Move package.



MAP VIEW OF VEHICLE LOCATIONS IN GUI

FACTS

- Geographical redundant anchor stations or tactical injection points
- Direct vehicle-to-any communication
- Doppler shift compensated modem technology
- On-the-Move waveform with BPSK/QPSK modulation
- "Invisible carrier": Min Es/No=-3dB
- Fastest link re-acquisition after line-of-sight interruption
- TRANSEC/COMSEC approved
- Synchronisation without GPS



SOTM MODEM SKYWAN 5G OUTDOOR

HEADQUARTERS

ND SatCom GmbH
Graf-von-Soden-Strasse
88090 Immenstaad
Germany
PHONE: + 49 7545 939 0
FAX: + 49 7545 939 8780
E-Mail: info@ndsatcom.com

CHINA

ND SatCom (Beijing) Co. Ltd.
PHONE: +86 10 6590 6869/6878

MIDDLE EAST

ND SatCom FZE
PHONE: +971 4886 5012

WEST AFRICA

ND SatCom Senegal
PHONE: +221 77 569 8017