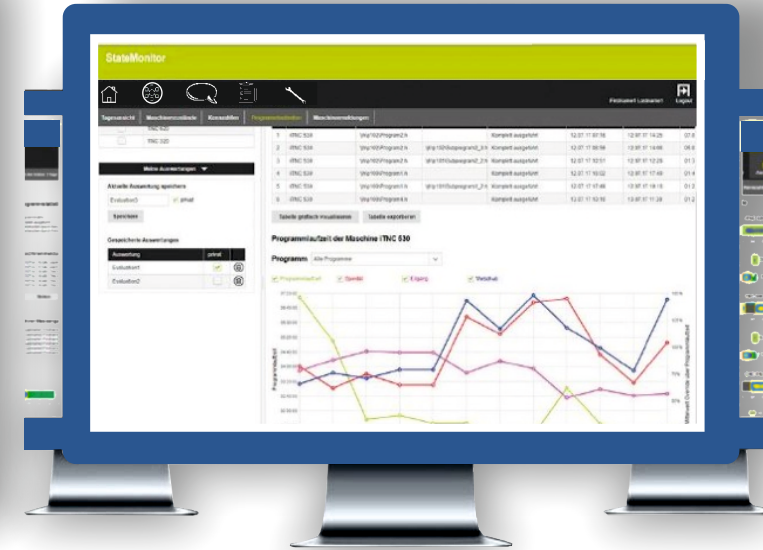
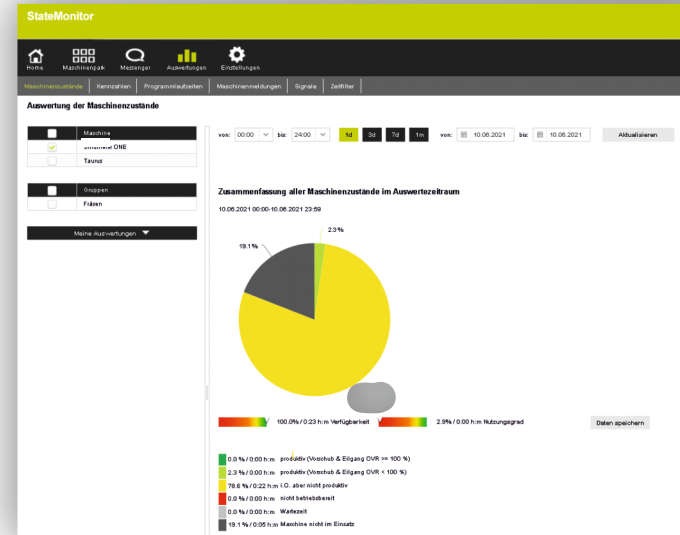
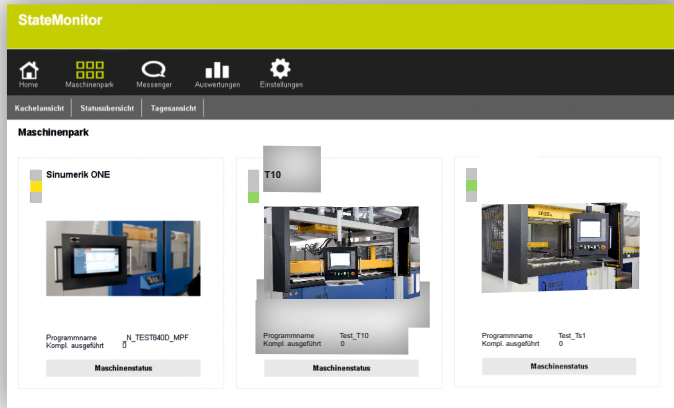


With the StateMonitor you always have the current status of your machines at a glance. It provides a real-time view of the production status of your machines. In the machine park view of the StateMonitor you receive an up-to-date status report at any time and can react quickly in case of interruptions.

By visualising the machine states using different types of diagrams you have the effectiveness of your machines at a glance and can thus optimise more efficient production.



You have the possibility, to access programme running times and machine messages worldwide via mobile devices and get an immediate overview of the status of your machinery.



Industrie 4.0

Provision of the machine data

Provision of the machine data

Through an OPC - UA - interface, the machine makes various machine parameters available for retrieval.

- » Machine status
- » Piece counter
- » Operating hours
- » Cycle time counter
- » Energy values
- » ...

There is the possibility of adding to the list of signals provided with parameters that are decisive parameters for the customer.

The evaluation and further processing of the signals is entirely up to the customer.

Even older machines can provide machine parameters through additional hardware.

StateMonitor

The StateMonitor is a possibility of evaluation and graphical representation of the machine parameters provided of the OPC UA interface.

The software records:

- » Current operating mode and machine messages
- » Programme status and override position
- » Active job
- » Machine states of the last three days
- » ...

Optional extensions are:

Messenger:

- » Active notification for defined machine messages
- » Error message via mail, e.g. maintenance
- » ...

Job-Terminal

- » Create and assign jobs
- » Booking of set-up or production times
- » ...

5-signal:

- Graphical visualisation of various parameters for a detailed cycle overview
- » Temperature curve during heating
 - » Temperature curve during cooling
 - » ...

Customised:

With an already existing system there is the possibility, in cooperation with the customer to work out a specification sheet in which interfaces and the integration of the machine into the system are clearly defined in order to ensure communication between order and production level.



Machine status



Messenger



Orders

