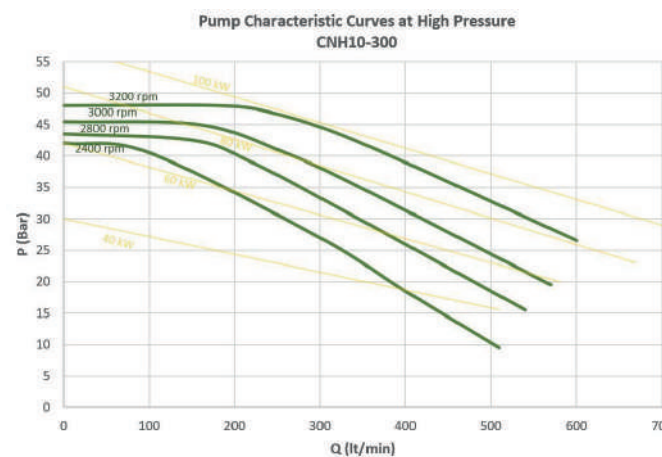
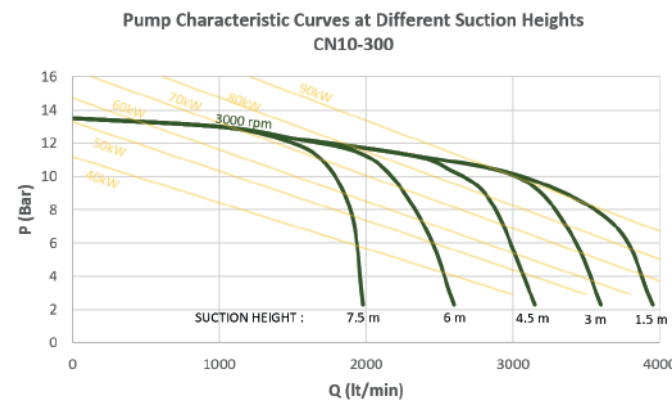


TECHNICAL SPECIFICATIONS

3000 SERIES	CN 10-300 (RPM Increaser)	CN 10-300(ML)
Low Pressure Flow Rate	3000 l/min (792 gpm)	3000 l/min (792 gpm)
High Pressure Flow Rate	-	-
Normal Pressure	10 bar (145 psi)	10 bar (145 psi)
Normal Pump Speed	3000 rev/min (rpm)	3000 rev/min (rpm)
Maximum Pump Speed	3200 rev/min (rpm)	3200 rev/min (rpm)
Minimum Idle Speed	700 rev/min (rpm)	700 rev/min (rpm)
Minimum Suction Speed	2500 rev/min (rpm)	2500 rev/min (rpm)
Maximum Suction Speed	3200 rev/min (rpm)	3200 rev/min (rpm)
Maximum Pressure	17 bar (246 psi)	17 bar (246 psi)
Weight	109 kg (240 lbs)	87 kg (192 lbs)
Suction Speed, 7.5 m depth	30 seconds	30 seconds
Operating Temperature	-15 °C (5 °F) / +55 °C (131 °F)	-15 °C (5 °F) / +55 °C (131 °F)
Dimensions (L x W x H) (mm/inch)	845 X 787 x 618 (33.3 x 31 x 24.4)	845 x 818 x 618 (33.3 x 32.2 x 24.4)
Thermal Drain Valve	72 °C (161 °F)	72 °C (161 °F)
Reducer Ratio Options	1/2,04 - 1/2,55 - 1/2,95	1/1

3000 SERIES	CNH 10-300 (RPM Increaser)	CNH 10-300(ML)
Low Pressure Flow Rate	3000 l/min (792 gpm)	3000 l/min (792 gpm)
High Pressure Flow Rate	40 bar 250-400 l/min (66-105 gpm)	40 bar 250-400 l/min (66-105 gpm)
Normal Pressure	10 bar (145 psi)	10 bar (145 psi)
Normal Pump Speed	3000 rev/min (rpm)	3000 rev/min (rpm)
Maximum Pump Speed	3200 rev/min (rpm)	3200 rev/min (rpm)
Minimum Idle Speed	700 rev/min (rpm)	700 rev/min (rpm)
Minimum Suction Speed	2500 rev/min (rpm)	2500 rev/min (rpm)
Maximum Suction Speed	3200 rev/min (rpm)	3200 rev/min (rpm)
Maximum Pressure	54,5 bar (790 psi)	54,5 bar (790 psi)
Weight	122 kg (269 lbs)	112 kg (247 lbs)
Suction Speed, 7.5 m depth	30 seconds	30 seconds
Operating Temperature	-15 °C (5 °F) / +55 °C (131 °F)	-15 °C (5 °F) / +55 °C (131 °F)
Dimensions (L x W x H) (mm/inch)	845 x 827 x 741 (33.3 x 32.6 x 29.2)	845 x 857 x 741 (33.3 x 33.7 x 29.2)
Thermal Drain Valve	72 °C (161 °F)	72 °C (161 °F)
Reducer Ratio Options	1/2,04 - 1/2,55 - 1/2,95	1/1



TS EN 1028, Iso 9001, Iso 14001, Iso 18001, CE ve Gost-R



f celiksanaracustu @ celiksan.co in celiksan

www.celiksan.com

Ekrem Demirtaş Caddesi No: 37
İtob Organize Sanayi Bölgesi, 35868 Menderes / İzmir / Turkey
+ 90 232 254 57 27 info@celiksan.com

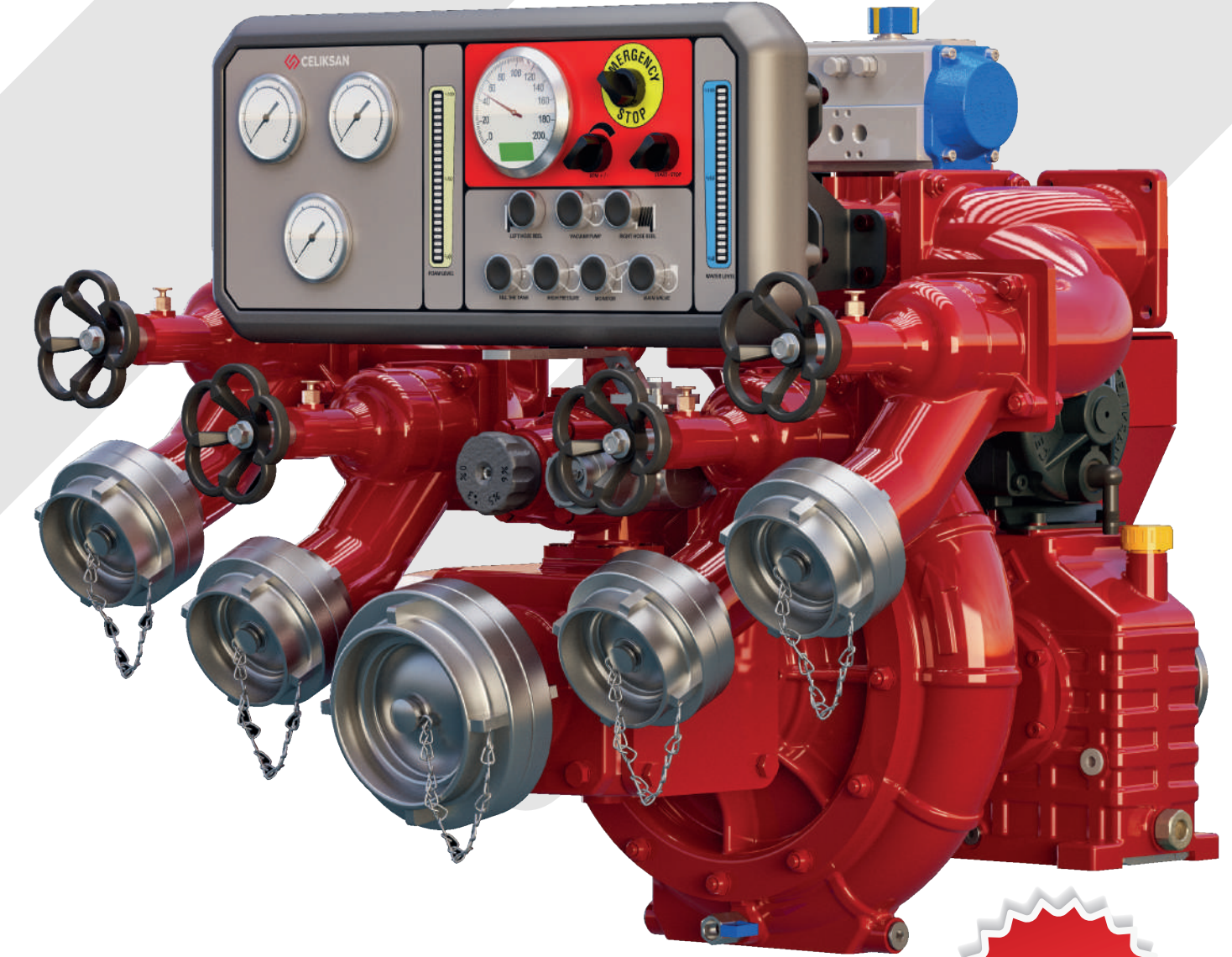
SINCE 1976



BOSPHORUS SERIES

CN 10-300
CNH 10-300 / 40-250

PATENTED



**NEW
PRODUCT**

 **CELIKSAN**
one brand

BOSPHORUS SERIES

CN 10-300



General Features

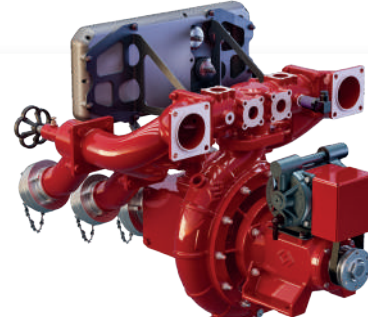
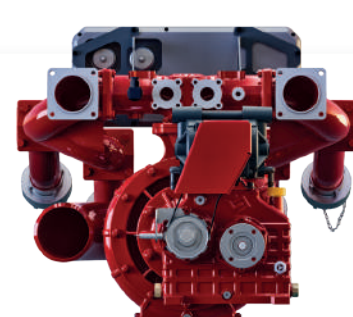
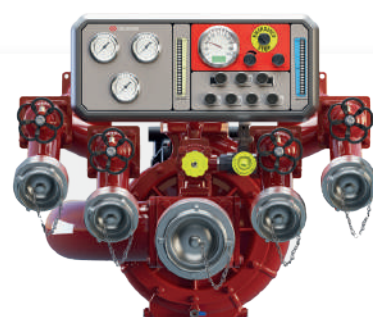
- Low pressure pump
- Compatible with a wide range of modifications
- Complies with EN 1028 standards (Document No: 056632)
- Maintenance-free mechanical seal and vacuum pump
- Lightweight alloy, high quality anodized aluminum body
- Suitable Mounting design for vehicles all over the world
- High performance automatic suction system
- Low pressure with single stage aluminum fan
- Low sound level
- Hot water tank for use in cold climates
- Thermal drain valve 72°C

CN 10-300 Fire Pumps;

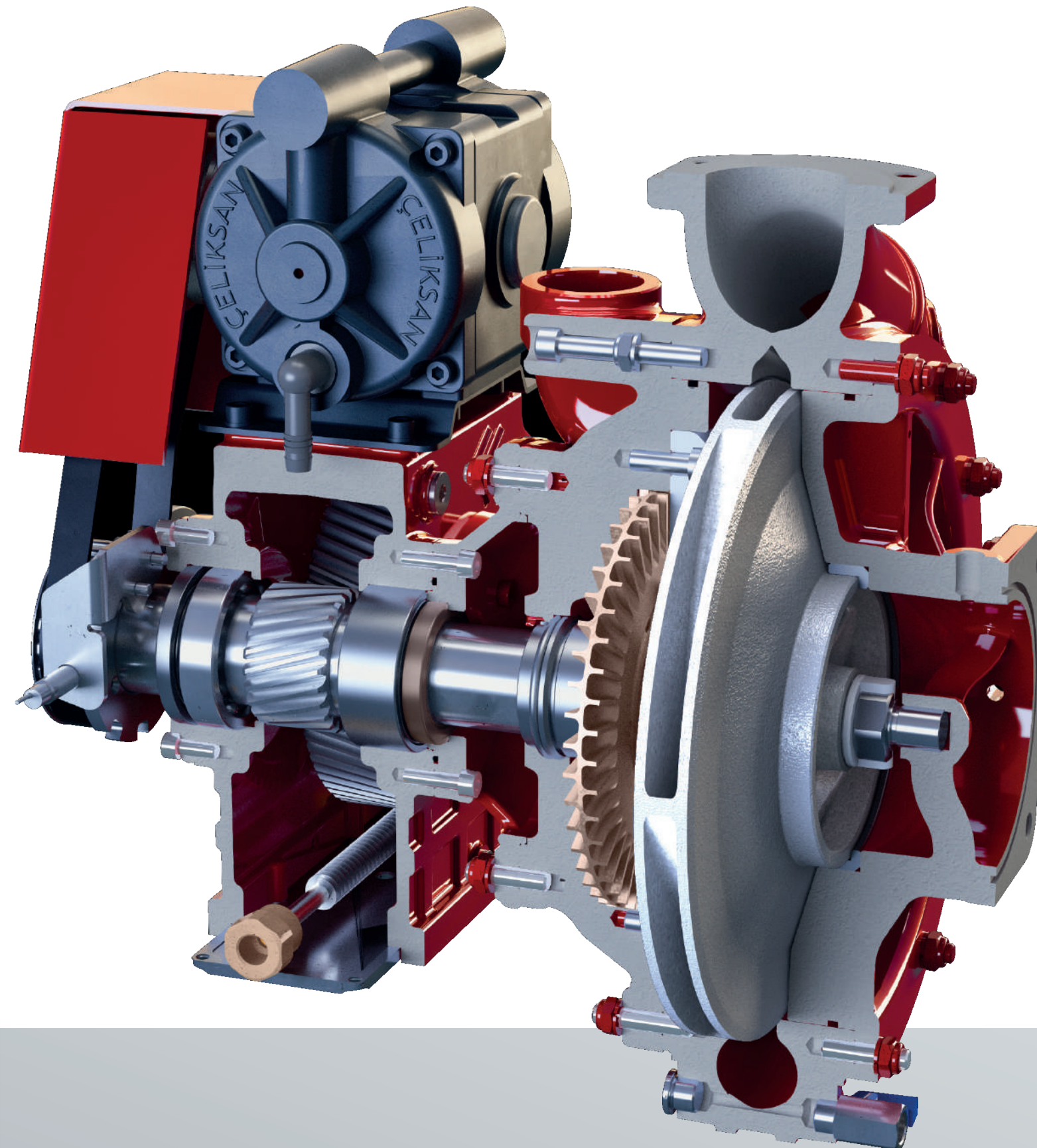
It is the patented pioneer series of Çeliksın company. This series, which is one of the world's market cornerstones, provides a service that never disappoints by providing unparalleled performance in the segment of fire pumps developed through research and development studies, where competition is at the highest level with its modern lines.

Options

- Distribution valve options (straight, angled, flanged)
- Various adapter options
- Body that can rotate clockwise and counterclockwise
- Control Panel
- Foam proportioning system
- Modular collector (distributor) system
- Bronze body option
- Reducer ratio options (1/2,04 - 1/2,55 - 1/2,95)
- Oil cooling system for reducer pumps
- Mechanical oil pressure control in reducer pumps



BOSPHORUS SERIES



BOSPHORUS SERIES

CNH 10-300 / 40-250



CN 10-300 / 40-250 Fire Pumps;

It is the patented pioneer series of Çeliksın company. This series, which is one of the world's market cornerstones, provides a service that never disappoints by providing unparalleled performance in the segment of fire pumps developed through research and development studies, where competition is at the highest level with its modern lines.

Options

- Distribution valve options (straight, angled, flanged)
- Various adapter options
- Body that can rotate clockwise and counterclockwise
- Control Panel
- Foam proportioning system
- Modular collector (distributor) system
- Bronze body option
- Reducer ratio options (1/2,04 - 1/2,55 - 1/2,95)
- Oil cooling system for reducer pumps
- Mechanical oil pressure control in reducer pumps

General Features

- Low and high pressure pump
- Compatible with a wide variety of modifications
- Complies with EN 1028 standards (Document No: 056632)
- Maintenance-free mechanical seal and vacuum pump
- Easy to clean high pressure filter
- Light alloy high quality anodized aluminum body
- Suitable mounting design for vehicles all over the world
- High performance automatic suction system
- Low pressure single stage aluminum fan
- High pressure single stage bronze fan
- High pressure by-pass system
- Low sound level
- Hot water tank for use in cold climate
- Thermal drain valve 72°C

