

## ABOUT US



ISO 9001: 2015



The Apena-Remont company started its operations on January 1, 1999 and was founded on the basis of the Repair Department of Fabryka Aparatów Elektrycznych APENA SA. Since the beginning of our existence, we have specialized mainly in the renovation of machinery and equipment, maintenance of machinery and industrial facilities, production of spare parts and execution of technological installations.

Experience gained over the years, expanded production capacity and extension of the construction and technological facilities have enabled us to start operating in the field of construction of completely new machines and devices as well as the implementation of complex renovations and modernizations.

Currently, we focus on developing our competences in the implementation of services related to the automation and robotization of production processes.

In order to ensure a high standard of quality of our services and the highest satisfaction of our clients with mutual beneficial cooperation, in 2002 we implemented the ISO 9001 Quality Management System. We are also preparing to implement the ISO 14001 Environmental Management Standard. We are also a multiple winner of the „Gazete Biznesu” plebiscite and the annual „Fair Play” Gala .

The company currently employs over 100 people, has its own facility with a usable area of 7,000 m<sup>2</sup> and generates over 5 millions EUR annual turnover on average.



Apena-Remont Sp. z o.o.



# RANGE OF ACTIVITIES



MACHINES AND EQUIPMENT DESIGN  
PRODUCTION OF NEW MACHINES AND EQUIPMENT  
MACHINE REPAIRS  
AUTOMATION AND ROBOTIZATION OF PRODUCTION PROCESSES  
MODERNIZATION OF CONTROL SYSTEMS  
ADJUSTMENT OF MACHINES TO WE REQUIREMENTS  
MACHINE PARK MODERNIZATION  
MACHINE RELOCATIONS  
CURRENT MACHINES REPAIRS  
MAINTENANCE  
DESIGN AND PRODUCTION OF TOOLING AND INSTRUMENTATION  
PRODUCTION OF SPARE PARTS  
MAKING AND ASSEMBLY OF ELECTRIC CONTROL CABINETS  
EXECUTION OF ELECTRICAL, PNEUMATIC AND LIGHTING INSTALLATIONS  
MACHINE RUN OUT MEASUREMENTS  
MACHINERY SALES



# POWERS OF OUR TECHNICIANS

## Operation and maintenance:

- FORKLIFTS
- SLOW MOBILE MOVING PLATES
- FREIGHT LIFTS
- LIFTING GEAR
- CRANE
- HOISTS
- CRANE'S

## Permission for energy works:

- E-G-1
- E-G-2
- E-G-3
- D-G-1
- D-G-2
- D-G-3

## Welding:

- SHIELDED METAL ARC WELDING
- MAG
- TIG
- AIR-ACETYLENE WELDING



# APENA REMONT WORLDWIDE







## ENGINEERING DEPARTMENT

### Main possibilities:

- Machine design and modeling using Solid Edge 3D software
- Creating technical documentation in accordance with applicable standards and regulations
- Design and implementation of control systems based on components: Siemens, Allen-Bradley, Proface, Lenze, SEW, Mitsubishi, OMRON
- Creating robotic stations and integrating robots with existing processes







MECHANICAL DEPARTMENT has at its disposal:

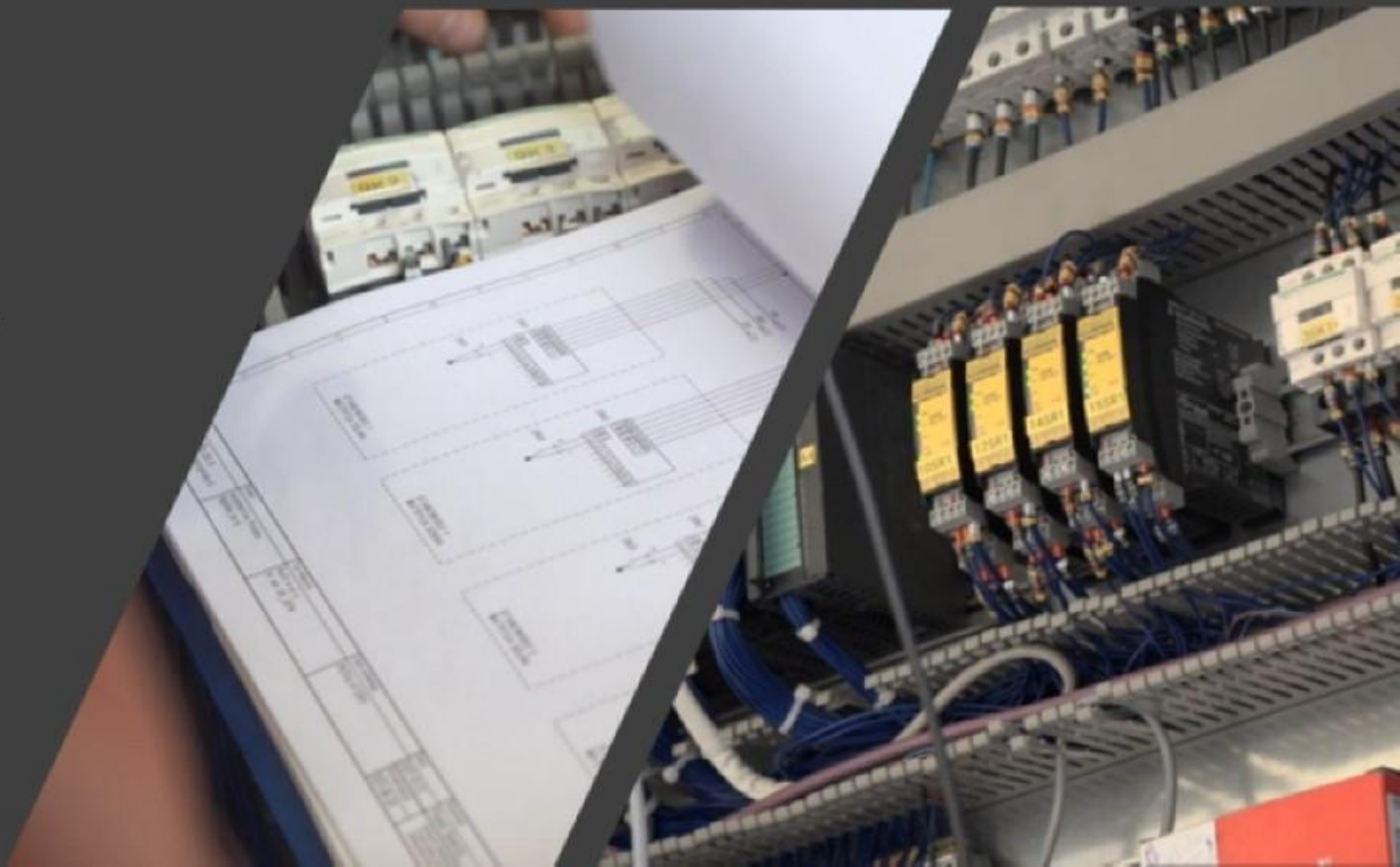
- An area of  $750\text{ m}^2$  with a height of 6 m
- High pressure wash for machines
- Wet painting shop
- Two welding workshops
- Three cranes up to 3 t
- Forklifts up to 6 t
- Articulated platform up to 10 m working height
- Two hydraulic presses and one eccentric
- Guillotine
- Two bending brake
- Two sets of transport rollers and lifts
- A warehouse of standards and spare parts





## ELECTRICAL DEPARTMENT:

- Surface 150  $m^2$
- A warehouse of standards and spare parts
- Specialized equipment enabling, among others:
  - ✓ Implementation of unusual electrical systems
  - ✓ Construction of power and control cabinets
  - ✓ Performing electrical measurements
  - ✓ Construction and testing of automation and electric systems
  - ✓ Engine rewinding





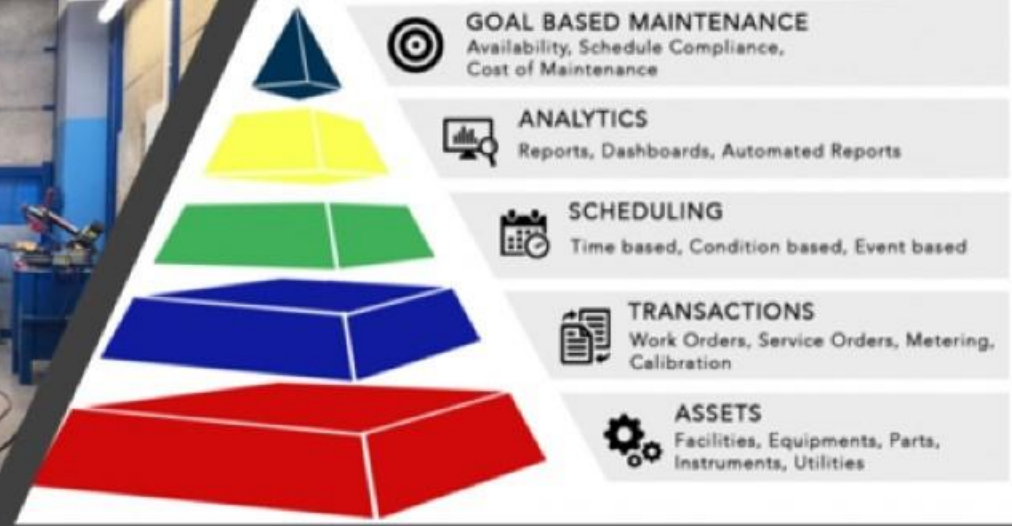


## MACHINING DEPARTMENT:

- Surface 550  $m^2$
- CNC machining centres
- CNC automatic lathes
- Grinders for surfaces, rollers and holes
- Die sinking and wire EDM machines
- Conventional machine tools
- Band saws
- sandblasting
- Heat treatment equipment







## DEPARTMENT OF MAINTENANCE SERVICES realizes:

- Ongoing repair and maintenance of machines
- Prevention - creation and analysis of failure history, implementation of preventive plans
- Diagnostics - thermovision, oil composition analysis, vibroacoustic, ultrasound tests
- Technical inspections
- Lubrication management and oil filtration
- Service of forklifts and UDT devices
- Resurs







## CHAMBER OF QUALITY CONTROL AND PRECISION MEASURES

has at its disposal:

- Coordinate measuring machine LK G 90-C with CAPS DMIS software
- FARO Platinum measuring arm
- Optical microscope
- Other auxiliary measuring instruments



# EXAMPLES OF NEW AND REFURBISHED MACHINES PERFORMED BY APENA REMONT



Automatic Welder Machine ASJ

Double Station Welder Machine ASD

Superfinisher Supfins 464



Cincinnati centreless Grinding Machine

Collar Welder

Multi-Spindle automatic Lathe N861



Shock absorber body Washing Machine

Piston rod Washing Machine

Automatic shock absorber Assembly Line



Pipe embossing Machine

Pipe marking Line

Piston washing Machine



Shock absorber body Closing Machine

Pipe Rolling Mill

COA Welding Machine



YLM Bending Machine

Piston rod Grinding Line



They trusted us, among others:



FIAT CHRYSLER AUTOMOBILES







Apena-Remont Sp. z o.o.  
ul. Partyzantów 61a  
43-300 Bielsko-Biała POLAND

Phone: +48 33 816 03 94  
[www.apena-remont.pl](http://www.apena-remont.pl)  
[biuro@apena-remont.com.pl](mailto:biuro@apena-remont.com.pl)  
[m.karcz@apena-remont.com.pl](mailto:m.karcz@apena-remont.com.pl)