

MILITARY & FIRE RESCUE

SPECIAL RANGE OF WINCHES



PANTHER WINCHES

This special range of Powerwinch products was originally designed and engineered specially for military vehicles basing on army's requirements.

The highest quality measured with durability, reliability and performance is achieved thanks to the best components, precise production and rigorous testing. Feedback from end users confirms top class of these winches and boosts improvements.

SPECIFICATION

IP RATED SAFETY SOCKET

HD INOX CONTROL PACK UNIT IP67 RATED

TWO BUILT IN
OVERLOAD
& OVERHEATING
PROTECTION

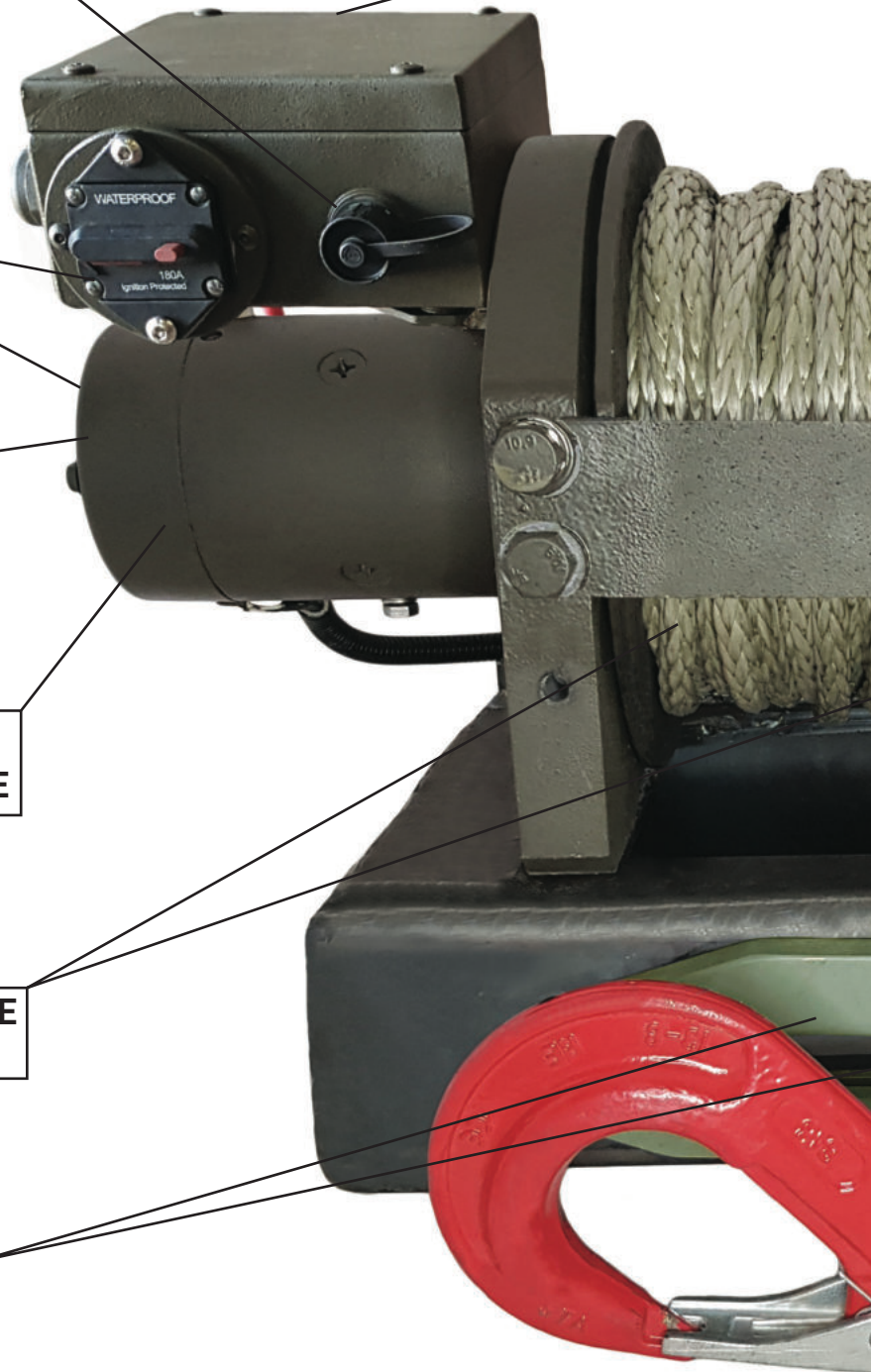
EXTRA SEALINGS
TO MEET IP68

MOTOR- HIGH POWER AND
TORGUE WITH LONGER DUTY CYCLE

STEEL OR SYNTHETIC ROPE
(OPTIONAL)

STEEL ROLLER OR ALUMINIUM
HAWSE FAIRLEAD (OPTION)

MILITARY
with synthetic rope





**DOUBLE EXTRA
DRUM SEALINGS**

**ROLLER ROPE
TENSIONER (OPTION)**

**PULL&TURN FREESPOOL;
PNEUMATIC (OPTION)**

**HD 3 STAGE HARDENED STEEL
PLANETARY GEARBOX**

**UNIQUE 2 CONE BRAKE
LOCATED OUTSIDE THE DRUM**

**CLUTCH HAWSING MAY BE ROTATED
IN 36° DEGREE INCREMENTS**

**HD ALUMINIUM SUPPORTS
READY FOR MOUNTING ROPE FAIRLEAD
AND/OR CABLE TENSIONER**

**HARDENED STEEL DRUM TO
USE WITH SYNTHETIC ROPES**

DEDICATED ROPE SPOOLER (OPTION)

FIRE
with steel cable

EN-14492-1
COMPLIANT*

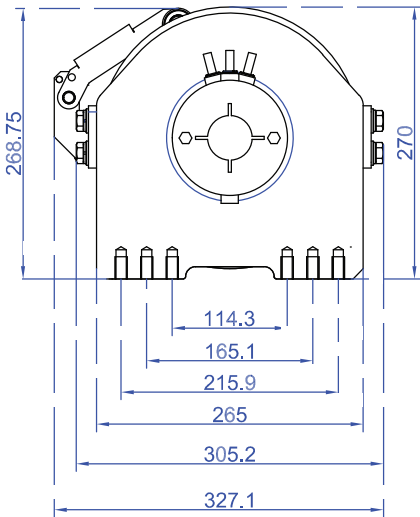
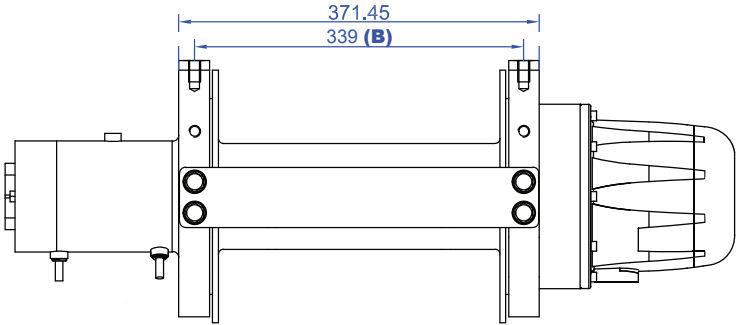
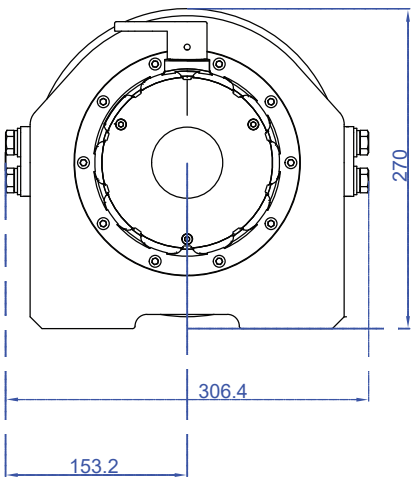
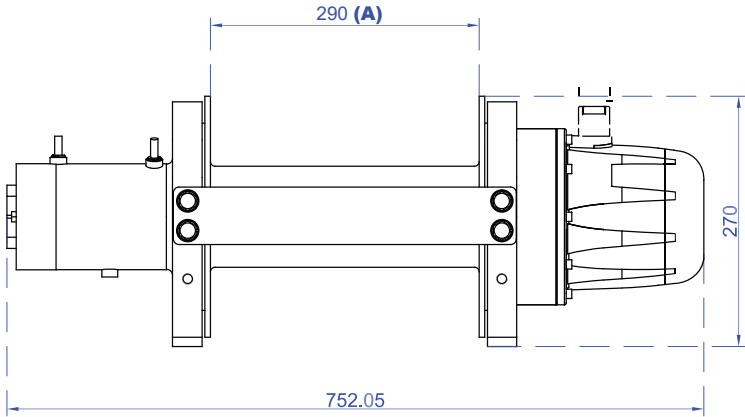
TECHNICAL DATA

	PHS120PRO* EN 14492-1	PHS160PRO* EN 14492-1	PHS200
Pulling capacity	52,2 kN	71,95 kN	88,96 kN
Motor	4HP	4HP	4HP
Relays	Kontaktor HD	Kontaktor HD	Kontaktor HD
Control system	Wire remote control 10 m	Wire remote control 10 m	Wire remote control 10 m
Transmission	3-stage planetary	3-stage planetary	3-stage planetary
Transmission ratio	315:1	315:1	315:1
Brake	2 cone brake	2 cone brake	2 cone brake
Drum diameter	125mm	108mm	88mm

		PHS120PRO	PHS160PRO	PHS200
Max. drum capacity	Short	-	-	205mm
	Medium	255mm	255mm	255mm
	Long	290mm	290mm	290mm
Max. wire rope diameter		13mm	12mm	12mm
Min. wire rope MBL		104,4 kN	143,9 kN	133,44 kN
Max. wire rope lenght**	Short	-	-	41m
	Medium	60m	36m	51m
	Long	70m	41m	58m

**ask your local sales representative for the rope specification.

Line speed first layer - 0 kg	TBA	TBA	TBA
Current draw	30-270A	30-270A	30-270A
Weight (winch)	TBA	TBA	TBA
Weight (box)	TBA	TBA	TBA



	205mm DRUM	255mm DRUM	290mm DRUM
A	205	255	290
B	254	304	339