

The Sorema logo features the word "Sorema" in a stylized, rounded, orange font. The letters are interconnected, with the 'S' and 'O' being particularly prominent. The logo is set against a background of industrial machinery, including a large red hopper and various conveyor systems.

Sorema

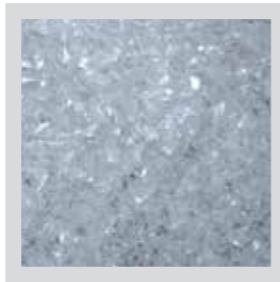
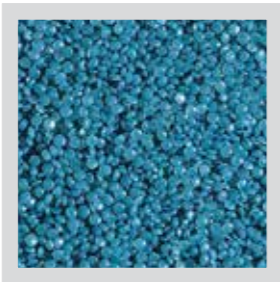
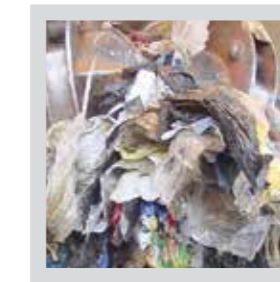
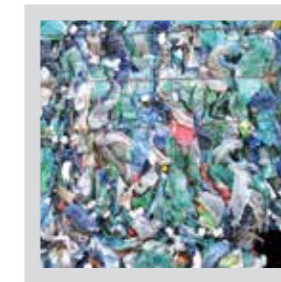
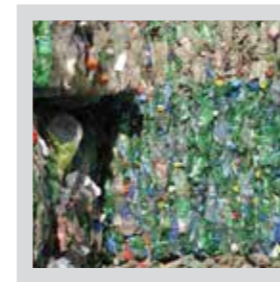
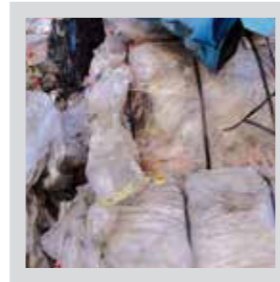
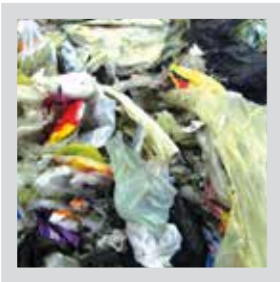
PLASTIC RECYCLING SYSTEM

WWW.SOREMA.IT



PREVIERO
SIZE REDUCTION TECHNOLOGIES

WWW.PREVIERO.IT



SOREMA, A DIVISION OF **PREVIERO**, HAS INSTALLED HUNDREDS OF RECYCLING SYSTEM SINCE 1976 PROCESSING EVERY TYPE OF WASTE PLASTIC IMAGINABLE.

THE TECHNICAL AND MANUFACTURING DEPARTMENTS USE THE LATEST 3D SOFTWARE TO INTEGRATE THE BEST TECHNOLOGY AVAILABLE INTO TURNKEY RECYCLING SYSTEM PRODUCING THE HIGHEST QUALITY RECYCLED MATERIAL.

SOREMA HAS BEEN AWARDED NUMEROUS WORLDWIDE PATENTS FOR RECYCLING MACHINES AND PROCESSES.





Research - Analysis of process conditions

COMPLETE ANALYSIS OF INPUT MATERIAL AND TEST ON OUR PILOT LINE

- Complete mass balance
- Polymer composition
- Contamination description
- Output quality validation
- Effluent water analysis (washing test)



Manufacturing and pre-assembling

- Plants are pre-assembled in our premises before the shipment
- All the interfaces and connections between the machineries are verified
- Care of the constructive details to grant the highest quality standard
- Option to arrange a pre-commissioning of the plant in our site



Engineering and Technical Assistance

- Plant design made by our engineering department
- After sales assistance and Problem solving
- Plant and machineries design with 3D modeling software
- Up-grade of existing lines with integration of new modules



Installation and start-up

- Packing and shipping for installation at customer site
- Our supply includes not only supervision of installation, but also mechanical assembling and electrical cabling services
- Quick start-up and achievement of design capacity
- High cooperation, qualified technical personnel providing personnel training



After sales service and production support

- Preventive maintenance program on site
- Remote technical assistance
- Standard operating procedure support
- Spare parts management



COMPLETE SYSTEMS AND MODULES

PET BOTTLES LINES

Complete systems or modules from 500 kg/h to 7000 kg/h.
Solutions for every applications as fibers, strapping, sheet and food contact packaging



FILM LINES

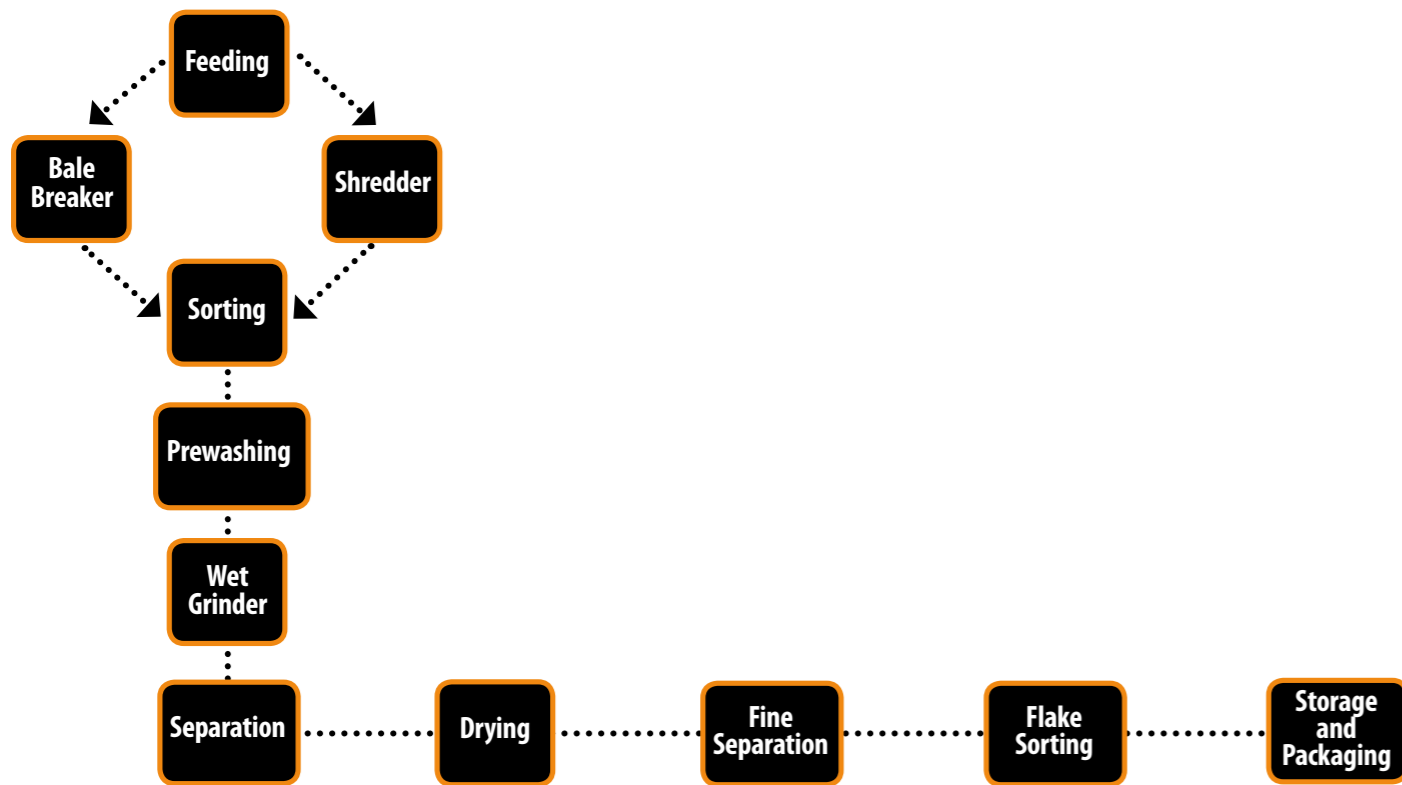
Lines and modules for every type of film waste.
Complete range of system for PE, PP, PS, PET film, from post-consumer, post-industrials or agricultural origins.





RIGID PACKAGING /SCRAPS LINE

A wide range of solutions covering every potential applications.
The lines can integrate hot washing modules, where high quality output is requested.





WHOLE BOTTLES PREWASHING:
ELIMINATE SURFACE CONTAMINATION AND PAPER. RELEASE AND SEPARATE PLASTIC LABELS.



SHREDDING:
FEED AT CONSTANT RATE THE WASH LINE. CONTROL SIZE AND IMPROVE PERFORMANCE IN COMBINATION WITH PREWASH.



FILM PREWASH:
DIFFERENT SOLUTIONS ACCORDING TO CONTAMINATION. BY REDUCING MAJORITY OF CONTAMINANTS INCREASE PERFORMANCE OF WASH LINE.



WET GRINDER: UNITS WITH HIGH FLEXIBILITY AND PERFORMANCES FOR EVERY TYPE OF PLASTICS. SPECIAL DESIGN WITH INTERCHANGEABLE WEARING PARTS.



ESBIMA MODULES

HOT WASH FOR FLAKES:
THE SYSTEM PROVIDES INTENSIVE SURFACE CLEANING BY COMBINATION OF TEMPERATURE, TIME, FRICTION AND CHEMICALS. SOLUTION OFFERED FOR BOTH RIGID AND FILM LINES.

SEPARATION:
ALLOWS TO SEPARATE MATERIALS WITH DIFFERENT DENSITY. SPECIAL MODULES WITH MODIFIED DENSITY SEPARATION CAN BE OFFERED.

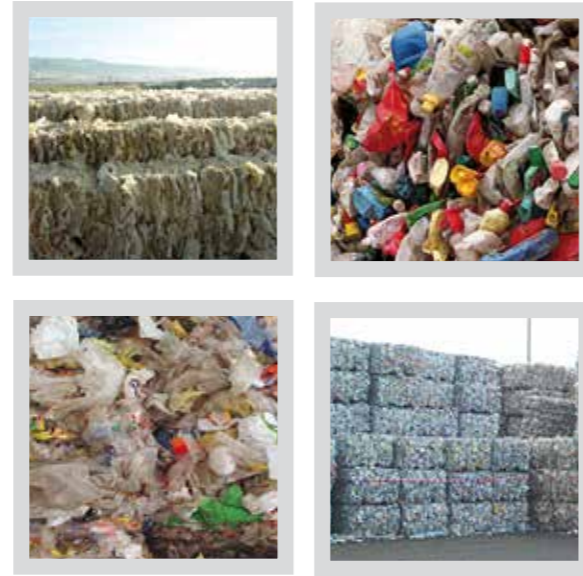
MECHANICAL DRYING:
IMPROVES DRYING OF THIN MATERIAL WITH OPTIMIZED ENERGY USE.

FINES SEPARATION:
SEPARATES FINES AND LIGHT FRACTION IN RECYCLING PROCESS.

LABELS SEPARATION:
USED TO SEPARATE SLEEVE LABELS IN PET BOTTLES RECYCLING. TO REMOVE LABELS AND CONTAMINATION IN RIGID AND MIXED BOTTLES LINES.



GRINDERS TYPE R – PRH

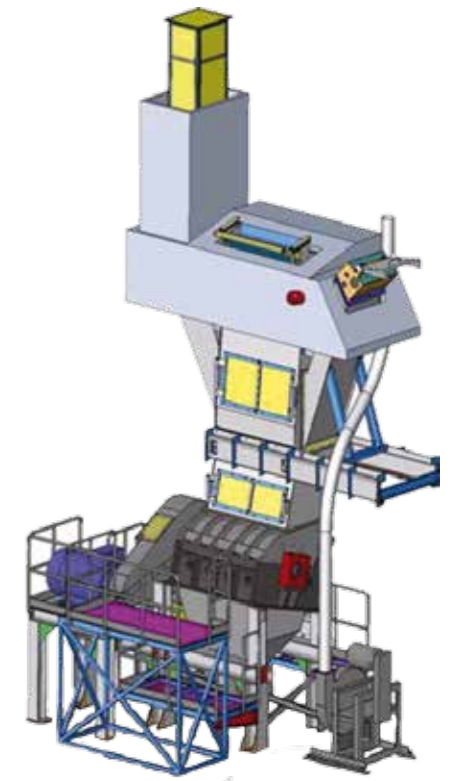


WET GRINDING SYSTEMS

DRY GRINDING SYSTEMS WITH CONVEYOR BELT AND PNEUMATIC TRANSPORT



BI-ORIENTED FILM GRINDING SYSTEMS



SHEETS



PIPES CUSTOMIZED GRINDING SYSTEMS



HEAVY DUTY GRINDERS

TYPE N

Suitable for all production requirements.
Flexible, easy to install.

| MODELS "N" SERIES | | | | |
|----------------------|--------------|----|----|------|
| MU 305 | Ø 300 x 500 | N3 | - | - |
| MU 406 | Ø 400 x 600 | N3 | N5 | - |
| MU 408 | Ø 400 x 800 | N3 | N5 | N5/3 |
| MU 412 | Ø 400 x 1200 | N3 | N5 | N5/3 |



TYPE M

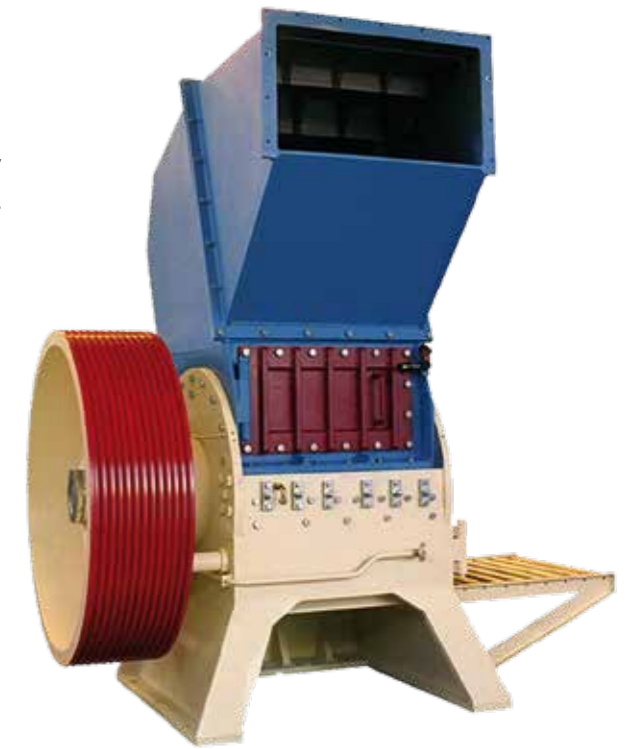
Proper for rubber and plastic wastes recycling.
Suitable for all products.

| MODELS "M" SERIES | | | | | |
|----------------------|--------------|----|----|------|-----|
| MU 508 | Ø 500 x 800 | M3 | M5 | - | M3R |
| MU 512 | Ø 500 x 1200 | M3 | M5 | M5/3 | M3R |
| MU 515 | Ø 500 x 1500 | M3 | M5 | M5/3 | M3R |

TYPE P

Suitable for most difficult applications and with heavy loading oversized mechanics. Especially indicated for blocks.

| MODELS "P" SERIES | | | |
|----------------------|--------------|----|----|
| MU 712 | Ø 700 x 1200 | P4 | P6 |
| MU 715 | Ø 700 x 1500 | P4 | P6 |



PIPES GRINDERS

These grinders are designed to grind pipes and profiles of various diameters with a length up to 6.5 mt with side feeding or horizontal pusher.
The automatic feeding with horizontal pusher allow also the recycling of blocks and other production scraps. Pipes up to Ø 1350mm.

GRINDERS TYPE AS

The oleodynamic tilting of the cutting chamber ensures an extraordinary easy access and cleaning which cannot be compared with the traditional grinders.

Suitable for high productions and frequent color change and materials.

2 MODELS AVAILABLE:

- MU 420 AS with Ø 400 x 2000 mm rotor
- MU 816 AS with Ø 800 x 1600 mm rotor



RUBBER GRINDING SYSTEMS

NATURAL AND SYNTHETIC RUBBER GRINDING PLANT

FOR THE PRODUCTION AND COMPOUNDING OF ADHESIVE MASSES

The natural and synthetic rubber bales are prepared on the storage belt. The size of the ground material can vary according to the requirements and many require single or two stage grinding.

A storage system of various sizes can be installed, equipped with an in line weighing system for the rapid loading of the mixer.

The plant is completely automated by a PLC.

Dosing units for antisticking material in powder or liquid form are available.

All the main producers of adhesive tape now use the system

as it drastically reduces the dissolving time without interfering

in any way with the final quality of the product.

Available in many layout and production capacity.



ADVANTAGES

- Automatic loading of the mixer without an operator
- Rapid dissolving time
- Possibility of reducing mixer loading time

COMPACT GRANULATORS FOR RUBBER POLYMERIZATION PLANTS

In polymerization plants for synthetic rubbers, it is necessary to use granulators to break the rubber crumbs and standardize the material flow to the weighing and packing units. Over 30 years of experience in this field have allowed us to develop machines that are efficient and reliable.

Available in three models and many types of steel. Stainless steel version are available.

ADVANTAGES

- High reliability and efficiency
- Minimum heating of product in the granulator with the use of a chilled water system
- Optimum cutting forms eliminating dead zones and stagnation areas of the polymers



GRINDING AND HOMOGENIZING PLANT FOR NATURAL AND SYNTHETIC RUBBER FOR FEEDING OF INTERNAL MIXERS

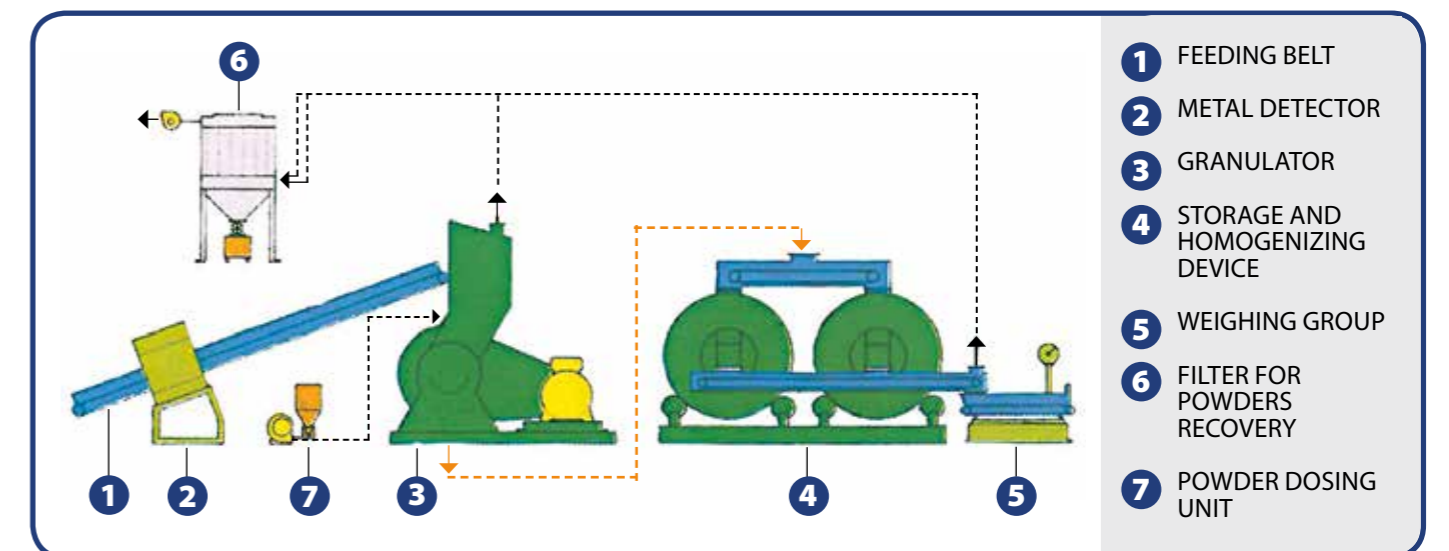
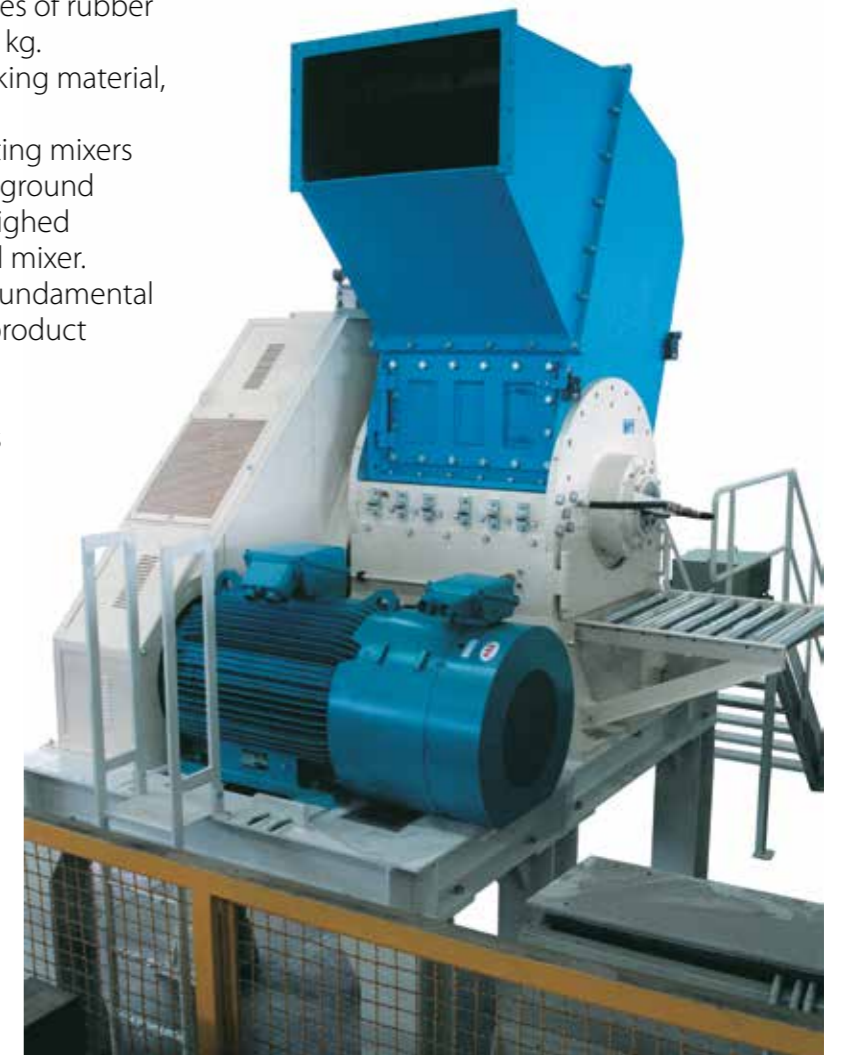
The plant is able to directly grind standard bales of rubber of 25-35 kg and bales of natural rubber of 110 kg. During the grinding, powder or liquid antisticking material, can be automatically dosed.

The ground product is then conveyed to rotating mixers which homogenize perfectly and store it. The ground rubber can be automatically and precisely weighed allowing the automatic feeding of the internal mixer. In moder rubber transformation processes, a fundamental condition necessary to obtain a high quality product is the uniformity of the chemical and physical characteristics of polymers used. In rubber, especially natural rubber, these characteristics can vary greatly. This type of plant homogenises materials from different sources, thereby delivering a very consistent materials.

The system is completed with blending trommel of 2-5-10 tons each.

ADVANTAGES

- Automatic loading of rubber into the internal mixer
- Precise weighing
- Optimisation of the mixer cycle by improving the filling of the mixing chambers and by reducing energy consumption





PREVIERO
SIZE REDUCTION TECHNOLOGIES

VIA PER CAVOLTO, 17
22040 ANZANO DEL PARCO (CO) • ITALY
PH. +39 031 63491250
FAX +39 031 63491217

sales@sorema.it • www.sorema.it
sales@previero.it • www.previero.it